
MMSD WEST HS FUNDRAISING PROJECT

30 ASH STREET
MADISON WI 53726



UDC & PLAN COMMISSION

JULY 19, 2021

PROJECT NUMBER: 20535-03



milwaukee 333 East Chicago Street
Milwaukee, Wisconsin 53202
414.271.5330

madison 309 West Johnson Street, Suite 202
Madison, Wisconsin 53703
608.442.2550

denver 1809 Wynkoop Street, Suite 300
Denver, Colorado 80202
303.595.4500

PROJECT INFORMATION

MMSD WEST HS FUNDRAISING PROJECT

30 ASH ST,
MADISON, WI 53726

ISSUANCE AND REVISIONS

DATE	DESCRIPTION
7/19/2021	UDC AND PLAN COMMISSION

KEY PLAN

SHEET INFORMATION

PROGRESS DOCUMENTS NOT FOR CONSTRUCTION

These documents reflect progress and intent and may be subject to change, including additional detail. These are not final construction documents and shall not be used for final bidding or construction-related purposes.

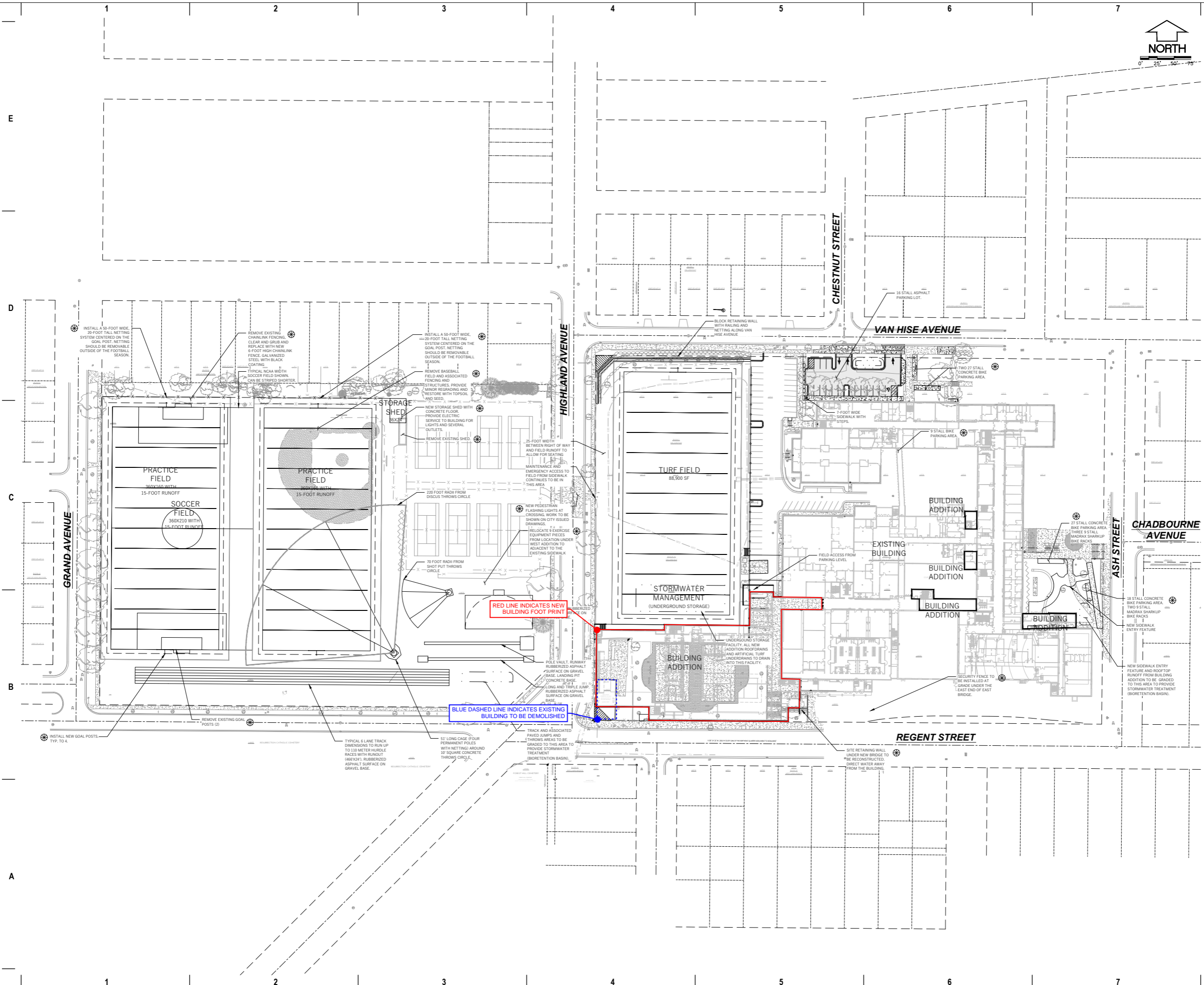
PROJECT MANAGER JM

PROJECT NUMBER 20535-01

SITE PLAN - OVERALL

C100

© 2021 Eppstein Uhan Architects, Inc.





milwaukee 333 East Chicago Street
Milwaukee, Wisconsin 53202
414.271.5350

madison 309 West Johnson Street, Suite 202
Madison, Wisconsin 53703
608.442.2550

denver 1809 Wynkoop Street, Suite 300
Denver, Colorado 80202
303.595.4500

PROJECT INFORMATION

MMSD WEST HS
FUNDRAISING
PROJECT

30 ASH STREET
MADISON WI 53726

ISSUANCE AND REVISIONS

DATE	DESCRIPTION
7/19/2021	UDC AND PLAN COMMISSION

KEY PLAN

SHEET INFORMATION

**PROGRESS DOCUMENTS
NOT FOR CONSTRUCTION**

These documents reflect progress and intent and may be subject to change, including additional detail. These are not final construction documents and shall not be used for final bidding or construction-related purposes.

PROJECT MANAGER JM

PROJECT NUMBER 20535-03

1ST FLOOR PLAN

A-01

© 2021 Eppstein Uhen Architects, Inc.

E

D

C

B

A

E

D

C

B

A

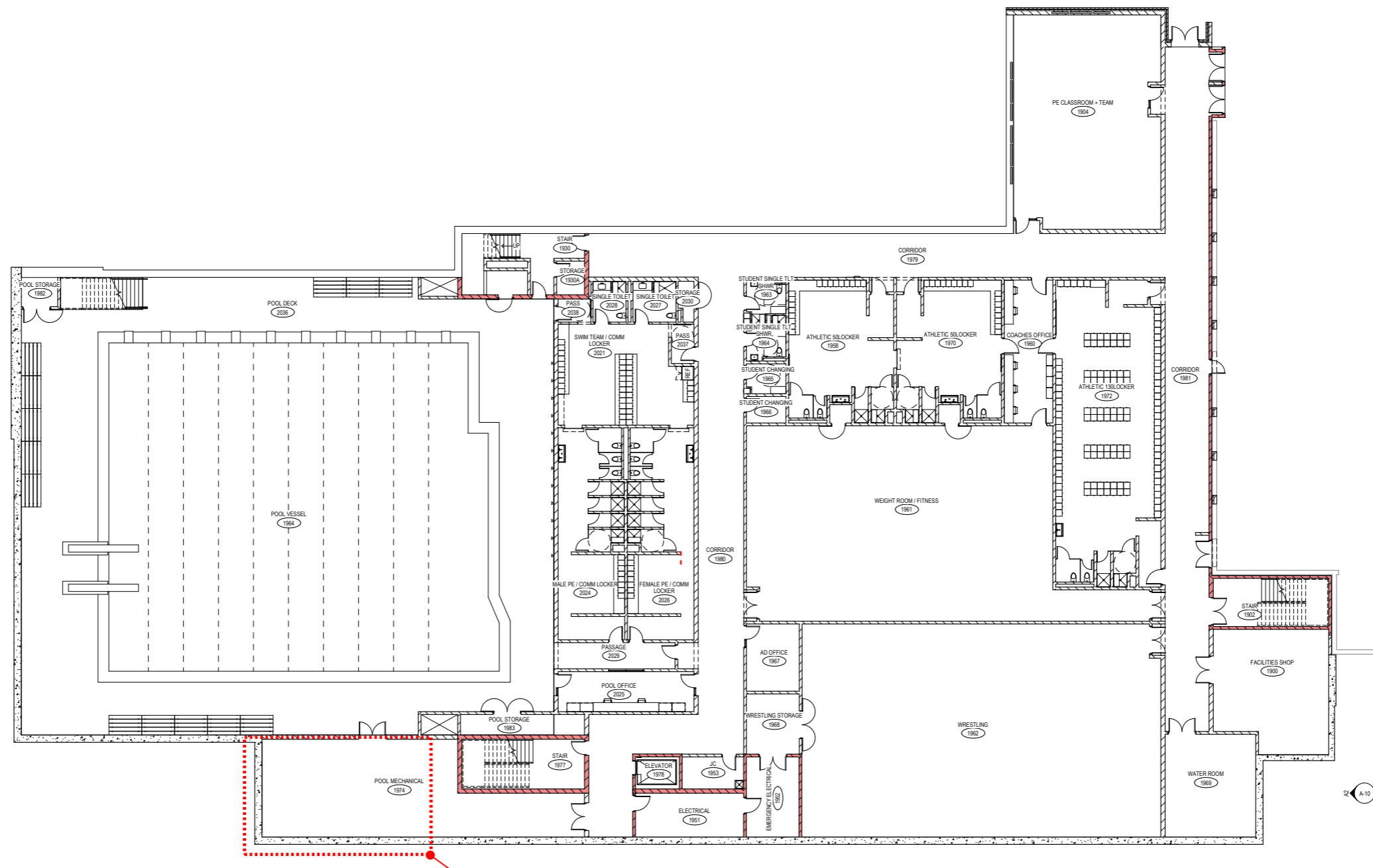
1 2 3 4 5 6 7

1 2 3 4 5 6 7

A-10

A-10

A-10



FLOOR PLAN EXPANSION IN FUNDRAISING SCOPE

A7 1ST FLR PLAN OVERALL - UDC
3/32" = 1'-0"



milwaukee 333 East Chicago Street
Milwaukee, Wisconsin 53202
414.271.5350

madison 309 West Johnson Street, Suite 202
Madison, Wisconsin 53703
608.442.2550

denver 1809 Wynkoop Street, Suite 300
Denver, Colorado 80202
303.595.4500

PROJECT INFORMATION

MMSD WEST HS
FUNDRAISING
PROJECT

30 ASH STREET
MADISON WI 53726

ISSUANCE AND REVISIONS

DATE	DESCRIPTION
7/19/2021	UDC AND PLAN COMMISSION

KEY PLAN

SHEET INFORMATION

**PROGRESS DOCUMENTS
NOT FOR CONSTRUCTION**

These documents reflect progress and intent and may be subject to change, including additional detail. These are not final construction documents and shall not be used for final bidding or construction-related purposes.

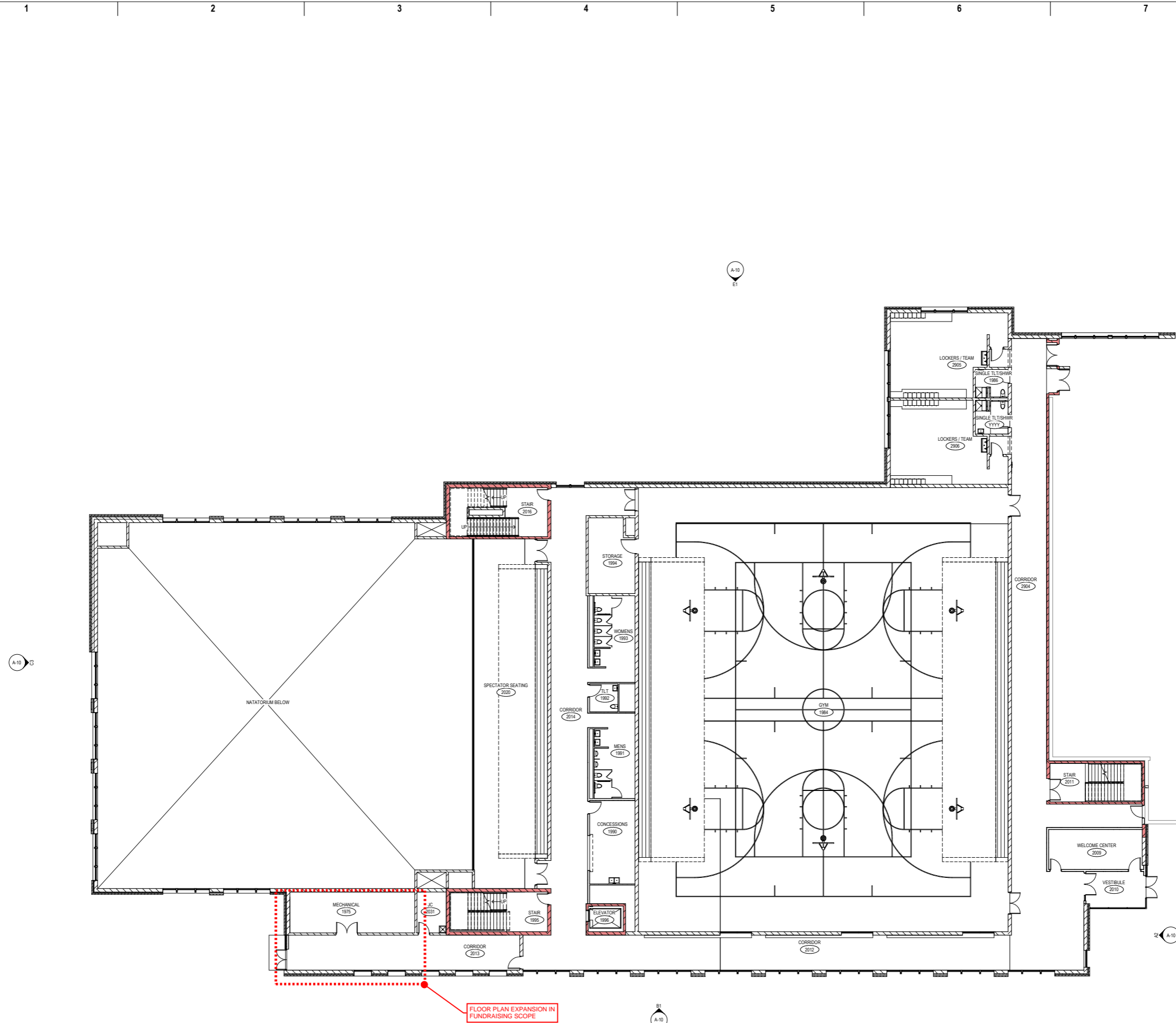
PROJECT MANAGER JM

PROJECT NUMBER 20535-03

2ND FLOOR PLAN

A-02

© 2021 Epstein Uhen Architects, Inc.



A7 2ND FLR PLAN OVERALL - UDC
3/32" = 1'-0"



milwaukee 333 East Chicago Street
Milwaukee, Wisconsin 53202
414.271.5350

madison 309 West Johnson Street, Suite 202
Madison, Wisconsin 53703
608.442.2550

denver 1809 Wynkoop Street, Suite 300
Denver, Colorado 80202
303.595.4500

PROJECT INFORMATION

MMSD WEST HS
FUNDRAISING
PROJECT

30 ASH STREET
MADISON WI 53726

ISSUANCE AND REVISIONS

DATE	DESCRIPTION
7/19/2021	UDC AND PLAN COMMISSION

KEY PLAN

SHEET INFORMATION

**PROGRESS DOCUMENTS
NOT FOR CONSTRUCTION**

These documents reflect progress and intent and may be subject to change, including additional detail. These are not final construction documents and shall not be used for final bidding or construction-related purposes.

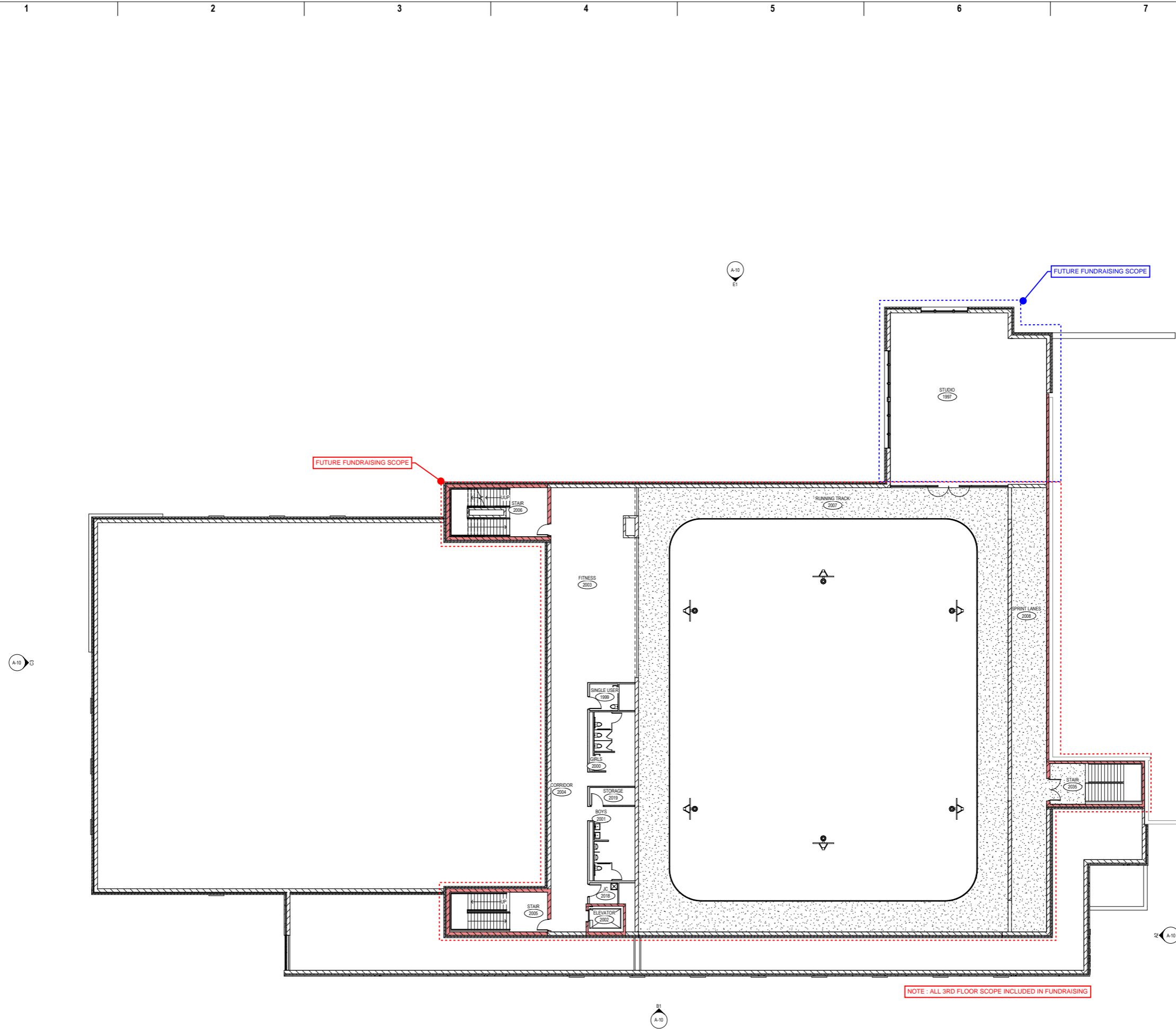
PROJECT MANAGER JM

PROJECT NUMBER 20535-03

3RD FLOOR PLAN

A-03

© 2021 Eppstein Uhen Architects, Inc.



A7 3RD FLR PLAN OVERALL - UDC
3/32" = 1'-0"



milwaukee 333 East Chicago Street
Milwaukee, Wisconsin 53202
414.271.5350

madison 309 West Johnson Street, Suite 202
Madison, Wisconsin 53703
608.442.2550

denver 1809 Wynkoop Street, Suite 300
Denver, Colorado 80202
303.595.4500

PROJECT INFORMATION

**MMSD WEST HS
FUNDRAISING
PROJECT**

**D 30 ASH STREET
MADISON WI 53726**

ISSUANCE AND REVISIONS

DATE	DESCRIPTION
7/19/2021	UDC AND PLAN COMMISSION

KEY PLAN

SHEET INFORMATION

**PROGRESS DOCUMENTS
NOT FOR CONSTRUCTION**

These documents reflect progress and intent and may be subject to change, including additional detail. These are not final construction documents and shall not be used for final bidding or construction-related purposes.

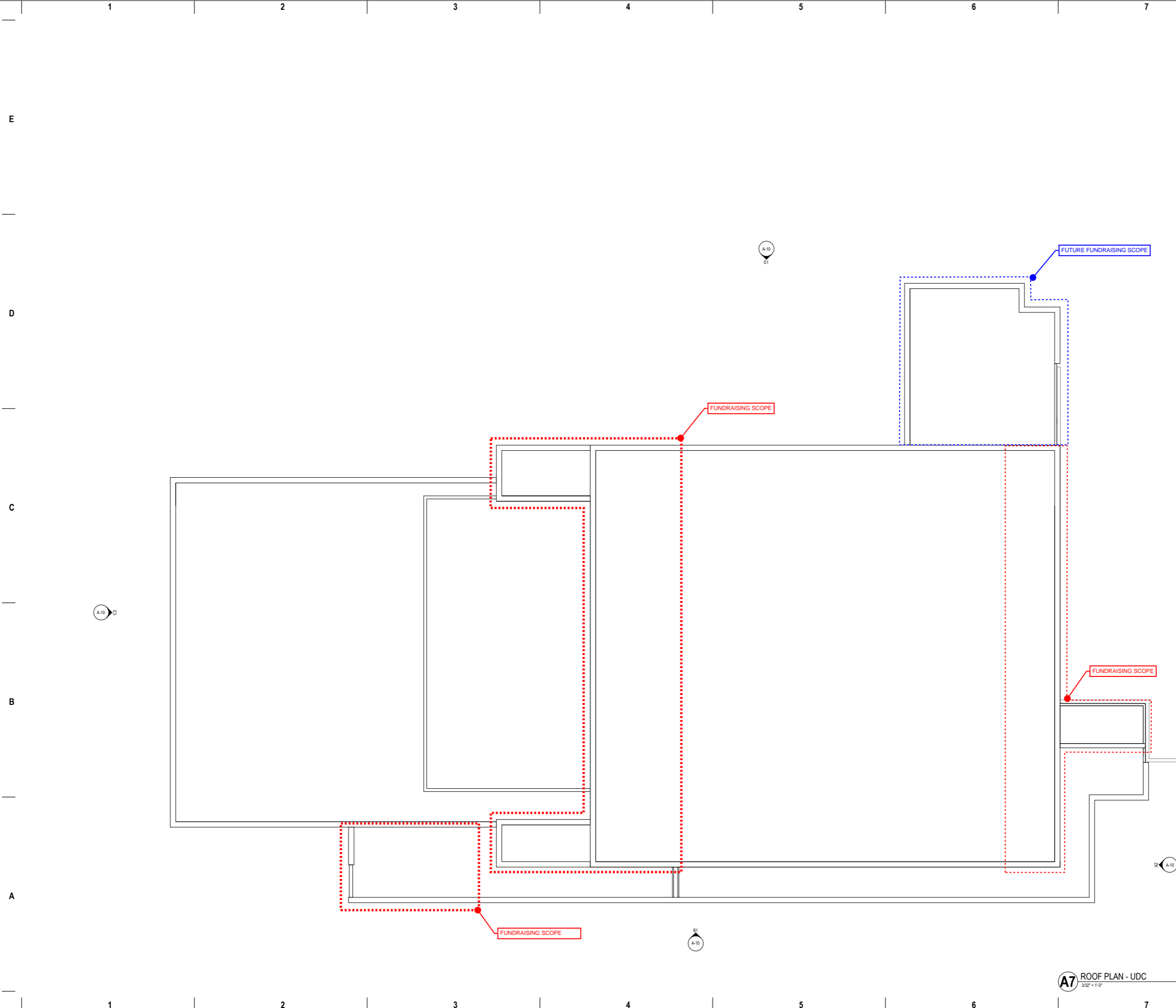
PROJECT MANAGER JM

PROJECT NUMBER 20535-03

ROOF PLAN

A-04

© 2021 Eppstein Uhen Architects, Inc.



A7 ROOF PLAN - UDC
3/32" = 1'-0"



milwaukee 333 East Chicago Street
Milwaukee, Wisconsin 53202
414.271.5350

madison 309 West Johnson Street, Suite 202
Madison, Wisconsin 53703
608.442.2350

denver 1809 Wynkoop Street, Suite 300
Denver, Colorado 80202
303.595.4500

PROJECT INFORMATION

MMSD WEST HS FUNDRAISING PROJECT

D 30 ASH STREET
MADISON WI 53726

ISSUANCE AND REVISIONS

DATE	DESCRIPTION
7/19/2021	UDC AND PLAN COMMISSION

KEY PLAN

SHEET INFORMATION

PROGRESS DOCUMENTS NOT FOR CONSTRUCTION

These documents reflect progress and intent and may be subject to change, including additional detail. These are not final construction documents and shall not be used for final bidding or construction-related purposes.

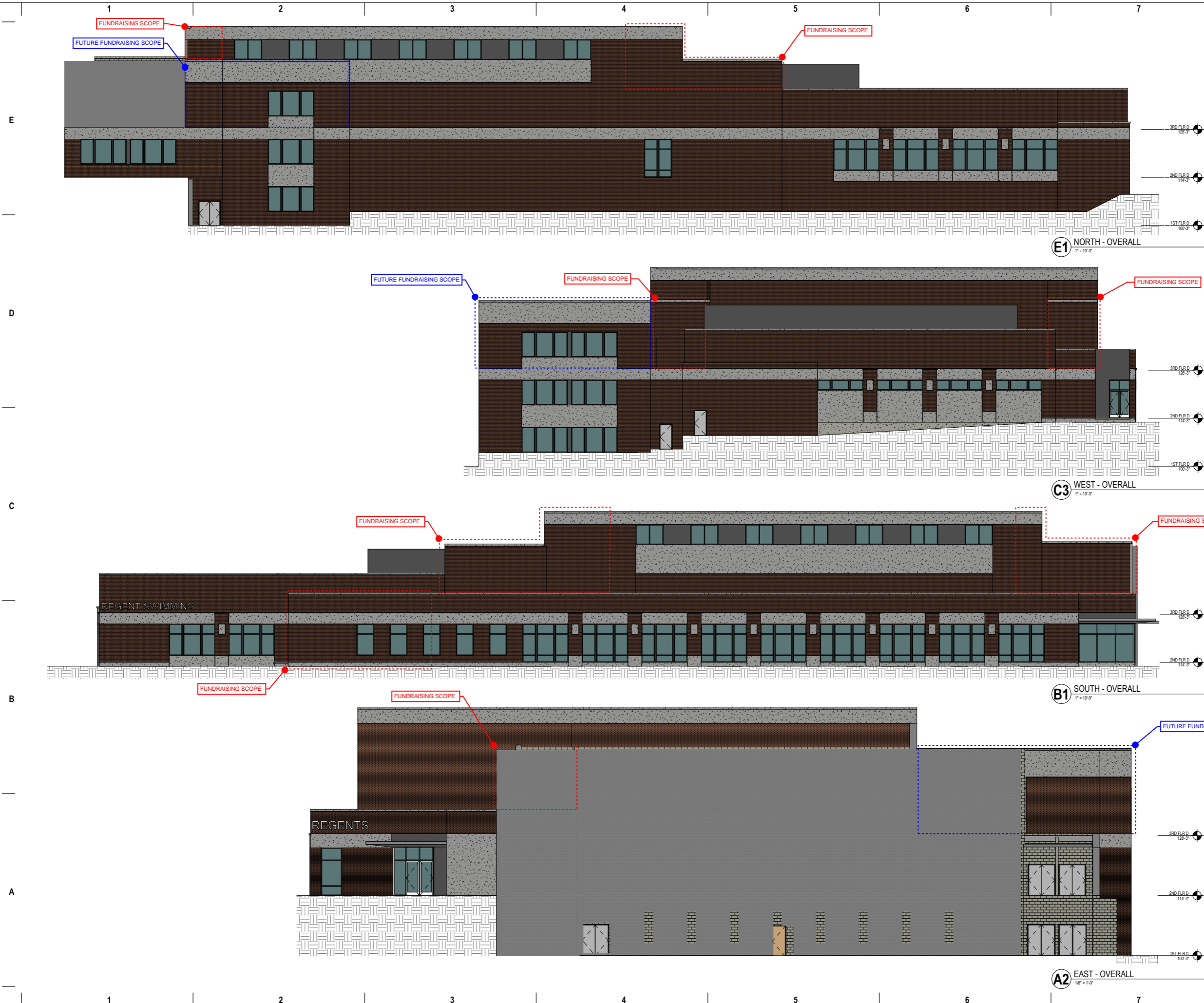
PROJECT MANAGER JM

PROJECT NUMBER 20535-03

BUILDING ELEVATIONS

A-10

© 2021 Eppstein Uhen Architects, Inc.





milwaukee 333 East Chicago Street
Milwaukee, Wisconsin 53202
414.271.5350

madison 309 West Johnson Street, Suite 202
Madison, Wisconsin 53703
608.442.2550

denver 1809 Wynkoop Street, Suite 300
Denver, Colorado 80202
303.595.4500

PROJECT INFORMATION

MMSD WEST HS
FUNDRAISING
PROJECT

30 ASH STREET
MADISON WI 53726

ISSUANCE AND REVISIONS

DATE	DESCRIPTION
7/19/2021	UDC AND PLAN COMMISSION

KEY PLAN

SHEET INFORMATION

**PROGRESS DOCUMENTS
NOT FOR CONSTRUCTION**

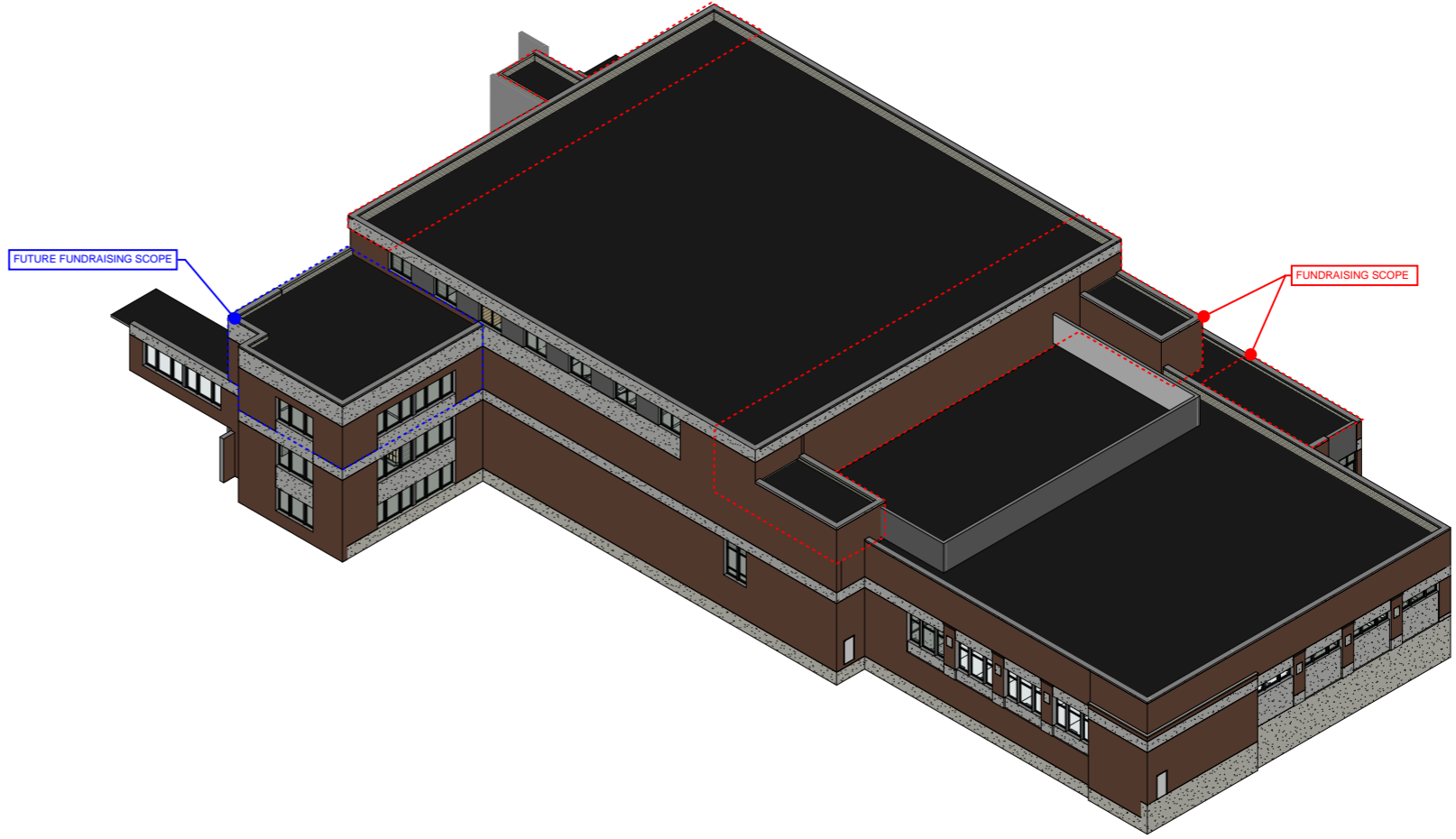
These documents reflect progress and intent and may be subject to change, including additional detail. These are not final construction documents and shall not be used for final bidding or construction-related purposes.

PROJECT MANAGER JM

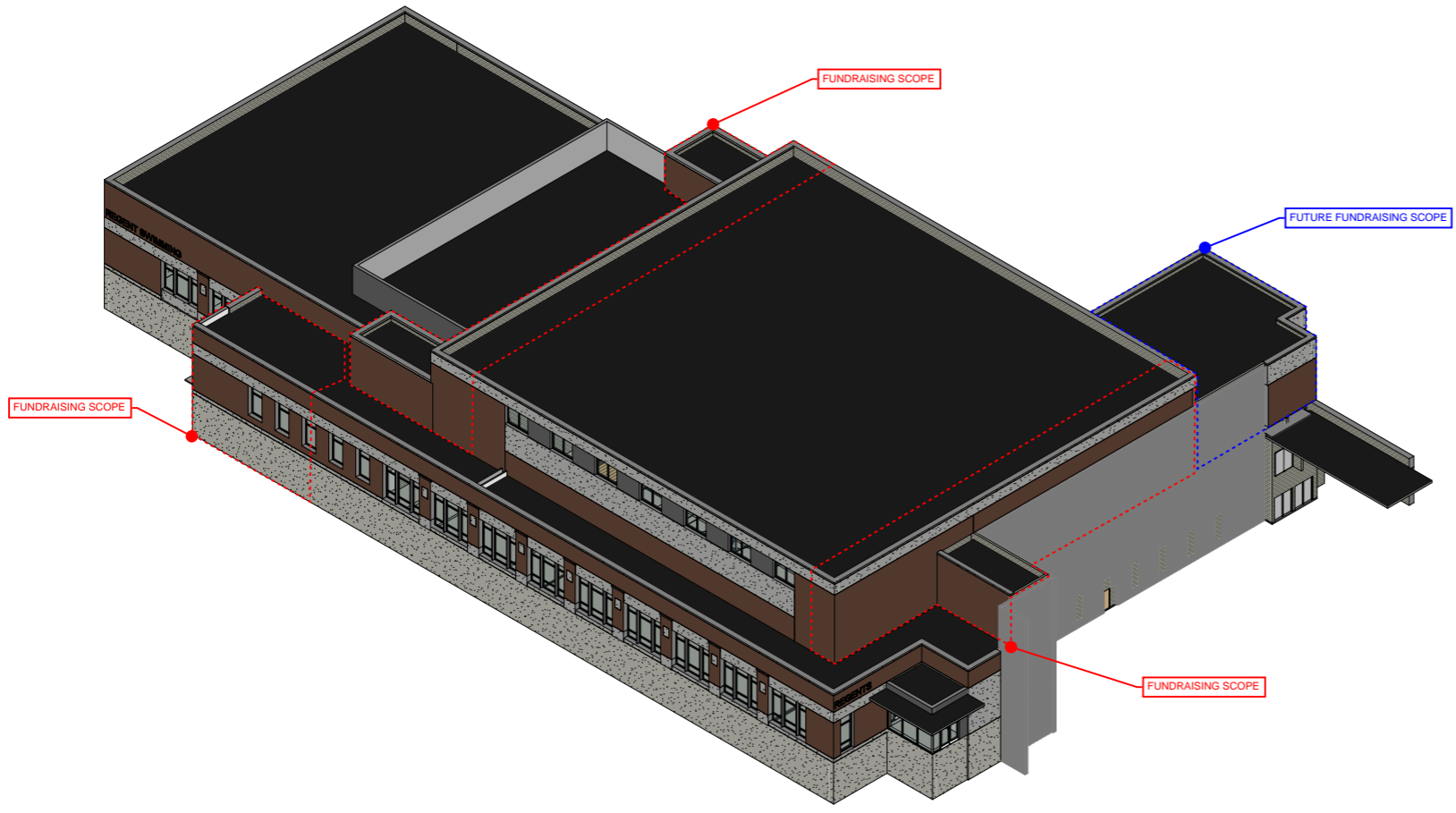
PROJECT NUMBER 20535-03

3D VIEWS

A-11



NW AXON VIEW



SE AXON VIEW

E

D

C

B

A

E

D

C

B

A

1

2

3

4

5

6

7

1

2

3

4

5

6

7



D AERIAL VIEW OF ATHLETIC ADDITION - FUNDRAISING



D AERIAL VIEW OF ATHLETIC ADDITION - BASE



C AERIAL VIEW OF ATHLETIC ADDITION - FUNDRAISING



C AERIAL VIEW OF ATHLETIC ADDITION - BASE



A VIEW OF ATHLETIC ADDITION ENTRY FROM REGENT STREET - FUNDRAISING



A VIEW OF ATHLETIC ADDITION ENTRY FROM REGENT STREET - BASE



milwaukee 333 East Chicago Street
Milwaukee, Wisconsin 53202
414.271.5350
madison 309 West Johnson Street, Suite 202
Madison, Wisconsin 53703
608.442.2550
denver 1809 Wynkoop Street, Suite 300
Denver, Colorado 80202
303.595.4500

PROJECT INFORMATION
MMSD WEST HS
FUNDRAISING
PROJECT 2&3

30 ASH STREET
MADISON WI 53726

ISSUANCE AND REVISIONS

DATE	DESCRIPTION
7/20/2021	UDC AND PLAN COMMISSION SUPPLEMENTAL IMAGES

KEY PLAN

SHEET INFORMATION

**PROGRESS DOCUMENTS
NOT FOR CONSTRUCTION**
These documents reflect progress and intent and may be subject to change, including additional detail. These are not final construction documents and shall not be used for final bidding or construction-related purposes.

PROJECT MANAGER JM
PROJECT NUMBER 20535-03

3D VIEWS

1

2

3

4

5

6

7

E



D VIEW OF ATHLETIC ADDITION FROM REGENT STREET - FUNDRAISING



VIEW OF ATHLETIC ADDITION FROM REGENT STREET - BASE



milwaukee 333 East Chicago Street
Milwaukee, Wisconsin 53202
414.271.5350

madison 309 West Johnson Street, Suite 202
Madison, Wisconsin 53703
608.442.2550

denver 1809 Wynkoop Street, Suite 300
Denver, Colorado 80202
303.595.4500

PROJECT INFORMATION

**MMSD WEST HS
FUNDRAISING
PROJECT 2&3**

D 30 ASH STREET
MADISON WI 53726

ISSUANCE AND REVISIONS

DATE	DESCRIPTION
7/20/2021	UDC AND PLAN COMMISSION SUPPLEMENTAL IMAGES

KEY PLAN

C



SPEEDWAY VIEW LOOKING EAST - FUNDRAISING



SPEEDWAY VIEW LOOKING EAST - BASE

B



AERIAL VIEW AT VAN HISE AND HIGHLAND - FUNDRAISING



AERIAL VIEW AT VAN HISE AND HIGHLAND - BASE

SHEET INFORMATION

**PROGRESS DOCUMENTS
NOT FOR CONSTRUCTION**

These documents reflect progress and intent and may be subject to change, including additional detail. These are not final construction documents and shall not be used for final bidding or construction-related purposes.

PROJECT MANAGER JM

PROJECT NUMBER 20535-03

3D VIEWS

1

2

3

4

5

6

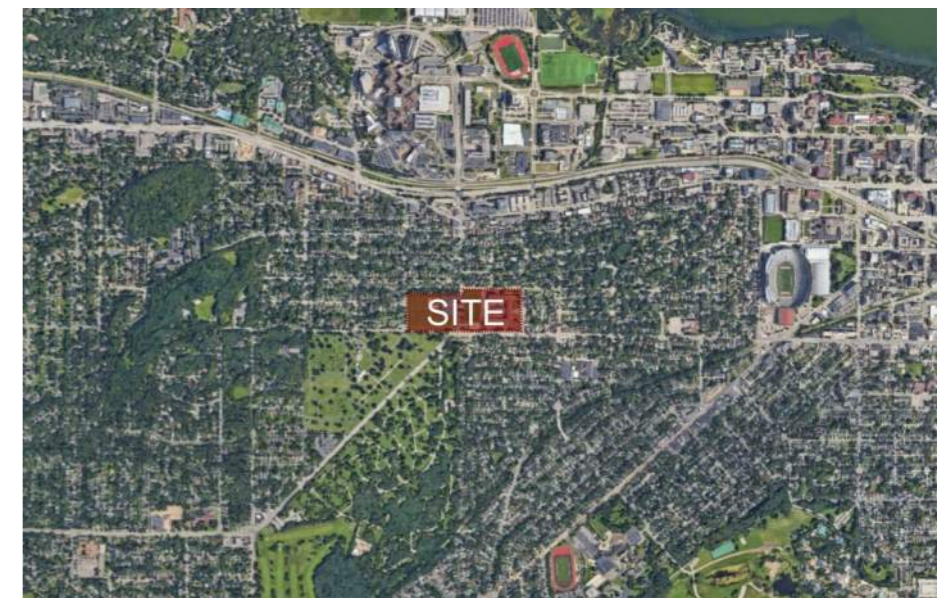
7

A

B

MMSD - WEST HS ADDITION AND RENOVATION

30 ASH ST, MADISON, WI 53726



UDC & PLAN COMMISSION

JUNE 1, 2021

PROJECT NUMBER: 20535-01

1

2

3

4

5

6

7



milwaukee 333 East Chicago Street
Milwaukee, Wisconsin 53202
414.271.5350

madison 309 West Johnson Street, Suite 202
Madison, Wisconsin 53703
608.442.2550

denver 1809 Wynkoop Street, Suite 300
Denver, Colorado 80202
303.556.4500

PROJECT INFORMATION

**MMSD - WEST HS
ADDITION AND
RENOVATION**

**D 30 ASH ST,
MADISON, WI 53726**

ISSUANCE AND REVISIONS

DATE	DESCRIPTION
06/07/2021	INITIAL UDC AND PLAN COMMISSION

KEY PLAN

SHEET INFORMATION

**PROGRESS DOCUMENTS
NOT FOR CONSTRUCTION**

These documents reflect progress and intent and may be subject to change, including additional detail. These are not final construction documents and shall not be used for final bidding or construction-related purposes.

PROJECT MANAGER JM

PROJECT NUMBER 20535-01

SITE LOCATION

T-1

© 2021 Eppstein Uhen Architects, Inc.

E

D

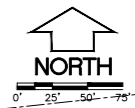
C

B

A



Map data ©2021 Google



milwaukee 333 East Chicago Street
Milwaukee, Wisconsin 53202
414.271.5330

madison 309 West Johnson Street, Suite 202
Madison, Wisconsin 53703
608.442.2590

denver 1809 Wynkoop Street, Suite 300
Denver, Colorado 80202
303.595.4500

PROJECT INFORMATION

MMSD - WEST HIGH SCHOOL

30 ASH ST,
MADISON, WI 53726

ISSUANCE AND REVISIONS

DATE	DESCRIPTION
06/01/2021	INITIAL UDC AND PLAN COMMISSION

KEY PLAN

SHEET INFORMATION

**PROGRESS DOCUMENTS
NOT FOR CONSTRUCTION**

These documents reflect progress and intent and may be subject to change, including additional detail. These are not final construction documents and shall not be used for final bidding or construction-related purposes.

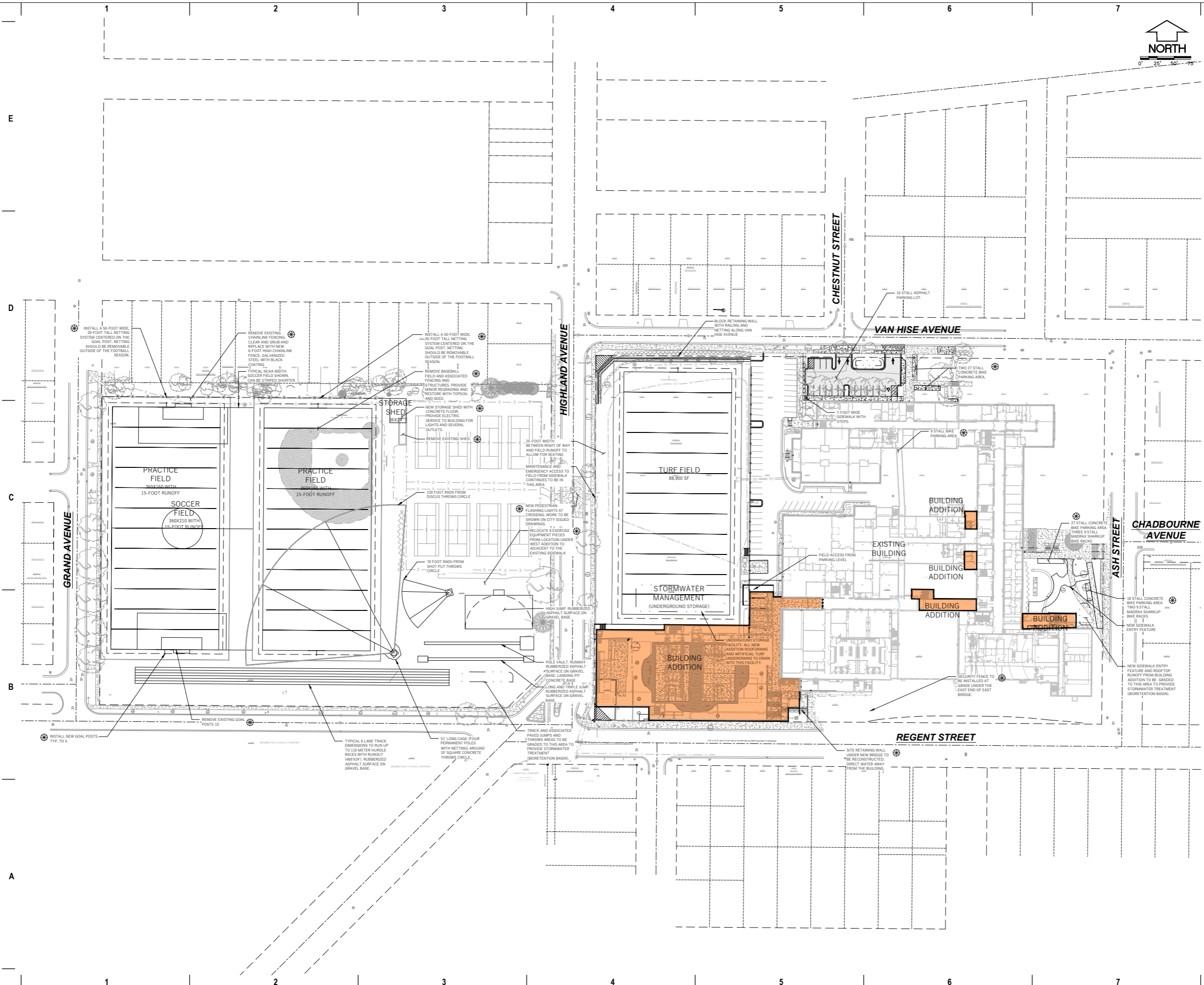
PROJECT MANAGER JM

PROJECT NUMBER 20535-01

SITE PLAN - OVERALL

C100

© 2021 Eppstein Uhan Architects, Inc.



E

D

C

B

A

E

D

C

B

A

1 2 3 4 5 6 7

CHESTNUT STREET

VAN HISE AVENUE

HIGHLAND AVENUE

ASH STREET

REGENT STREET

GRAND AVENUE

CHADBOURNE AVENUE

INSTALL A 50-FOOT WIDE 20-FOOT TALL NETTING SYSTEM CENTERED ON THE GOAL POST. NETTING SHOULD BE REMOVABLE OUTSIDE OF THE FOOTBALL SEASON.

REMOVE EXISTING CHAINLINK FENCING, CLEAR AND GRUB AND REPLACE WITH NEW 6-FOOT HIGH CHAINLINK FENCE, GALVANIZED STEEL WITH BLACK COATING.

TYPICAL NCAA WIDTH SOCCER FIELD SHOWN, CAN BE STRIPPED SHORTER.

INSTALL A 50-FOOT WIDE 20-FOOT TALL NETTING SYSTEM CENTERED ON THE GOAL POST. NETTING SHOULD BE REMOVABLE OUTSIDE OF THE FOOTBALL SEASON.

REMOVE BASEBALL FIELD AND ASSOCIATED FENCING AND STRUCTURES. PROVIDE MINOR REGRADING AND RESTORE WITH TOPSOIL AND SEED.

NEW STORAGE SHED WITH CONCRETE FLOOR. PROVIDE ELECTRIC SERVICE TO BUILDING FOR LIGHTS AND GENERAL OUTLETS.

REMOVE EXISTING SHED.

25-FOOT WIDTH BETWEEN RIGHT OF WAY AND FIELD RUNOFF TO ALLOW FOR SEATING MAINTENANCE AND EMERGENCY ACCESS TO FIELD FROM SIDEWALK CONTIGUOUS TO BE IN THIS AREA.

220 FOOT RADIUS FROM DISCUS THROWS CIRCLE.

70 FOOT RADIUS FROM SHOT PUT THROWS CIRCLE.

NEW PEDESTRIAN FLASHING LIGHTS AT CROSSING. WORK TO BE SHOWN ON CITY ISSUED DRAWINGS.

RELOCATE 9 EXERCISE EQUIPMENT PIECES FROM LOCATION UNDER WEST ADDITION TO ADJACENT TO THE EXISTING SIDEWALK.

FIELD ACCESS FROM PARKING LEVEL.

UNDERGROUND STORAGE FACILITY. ALL NEW ADDITION ROOF DRAINS AND ARTIFICIAL TURF UNDERDRAINS TO DRAIN INTO THIS FACILITY.

SECURITY FENCE TO BE INSTALLED AT GRADE UNDER THE LEAST END OF EAST BRIDGE.

SITE RETAINING WALL UNDER NEW BRIDGE TO BE RECONSTRUCTED. DIRECT WATER AWAY FROM THE BUILDING.

27 STALL CONCRETE BIKE PARKING AREA. THREE 9 STALL MADRAX SHARKLIP BIKE RACKS.

18 STALL CONCRETE BIKE PARKING AREA. TWO 9 STALL MADRAX SHARKLIP BIKE RACKS.

NEW SIDEWALK ENTRY FEATURE.

NEW SIDEWALK ENTRY FEATURE AND ROOF TOP RUNOFF FROM BUILDING ADDITION TO BE GRADED TO THIS AREA TO PROVIDE STORMWATER TREATMENT (BIORETENTION BASIN).

REMOVE EXISTING GOAL POSTS (2).

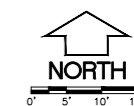
INSTALL NEW GOAL POSTS TYP. TO 4.

TYPICAL 6 LANE TRACK DIMENSIONS TO RUN UP TO 110 METER HURDLE RACES WITH HURDLE (46X24). RUBBERIZED ASPHALT SURFACE ON GRAVEL BASE.

51' LONG CAGE (FOUR PERMANENT POLES WITH NETTING) AROUND 10' SQUARE CONCRETE THROWS CIRCLE.

TRACK AND ASSOCIATED PAVED JUMPS AND THROWS AREAS TO BE GRADED TO THIS AREA TO PROVIDE STORMWATER TREATMENT (BIORETENTION BASIN).

PIPE VAULT, RUNWAY RUBBERIZED ASPHALT SURFACE ON GRAVEL BASE. LANDING PIT CONCRETE BASE (11.5' LONG AND 12' HIGH). RUBBERIZED ASPHALT SURFACE ON GRAVEL BASE.



milwaukee 333 East Chicago Street
Milwaukee, Wisconsin 53202
414.271.5330

madison 309 West Johnson Street, Suite 202
Madison, Wisconsin 53703
608.442.2590

denver 1809 Wynkoop Street, Suite 300
Denver, Colorado 80202
303.595.4500

PROJECT INFORMATION
MMSD - WEST HIGH SCHOOL

**30 ASH ST,
MADISON, WI 53726**

ISSUANCE AND REVISIONS

DATE	DESCRIPTION
06/01/2021	INITIAL UDC AND PLAN COMMISSION

KEY PLAN

SHEET INFORMATION

**PROGRESS DOCUMENTS
NOT FOR CONSTRUCTION**

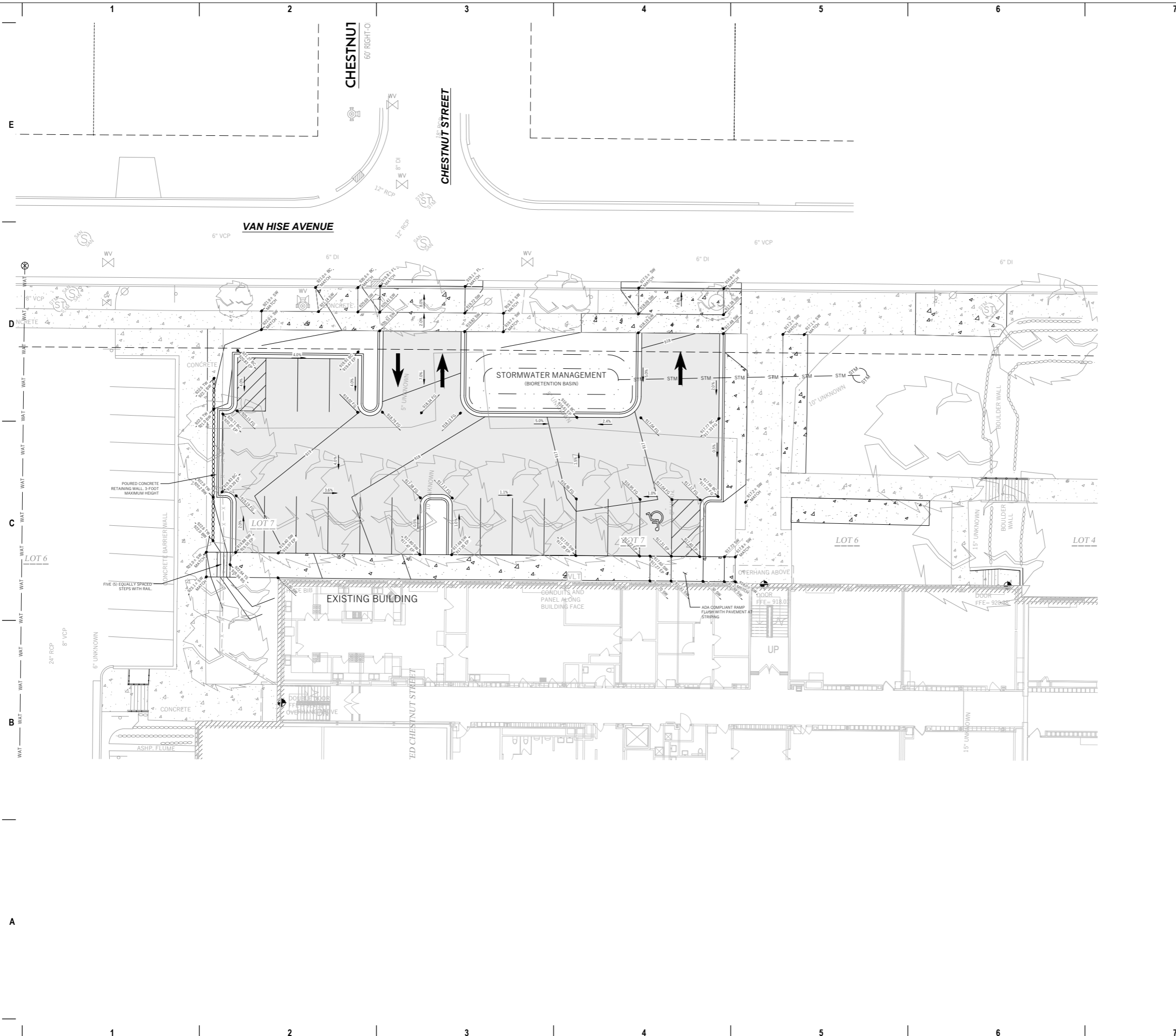
These documents reflect progress and intent and may be subject to change, including additional detail. These are not final construction documents and shall not be used for final bidding or construction-related purposes.

PROJECT MANAGER JM
PROJECT NUMBER 20535-01

**GRADING PLAN -
NORTH PARKING LOT**

C202

© 2021 Eppstein Uhan Architects, Inc.



PROJECT INFORMATION

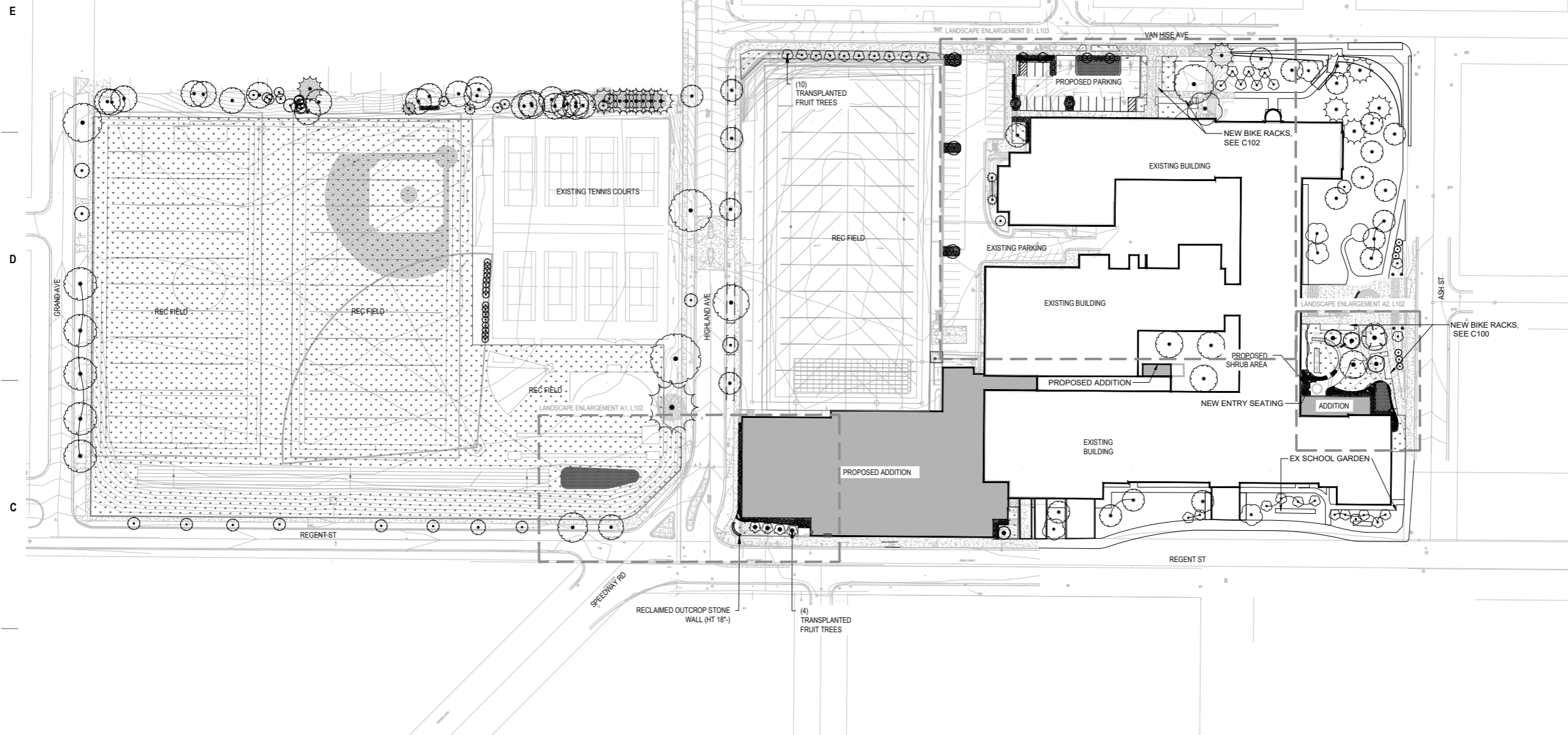
MMSD - WEST HIGH SCHOOL ADDITION & RENOVATION

**30 ASH ST.
MADISON, WI 53726**

ISSUANCE AND REVISIONS

DATE	DESCRIPTION
06/01/2021	INITIAL UDC AND PLAN COMMISSION

KEY PLAN



PLANT SCHEDULE

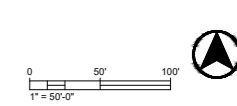
DECIDUOUS TREES	CODE	QTY	BOTANICAL / COMMON NAME	CONT	SIZE
	AF	1	Aesculus fava x glabra 'Deck Select' / Mystic Vision Buckeye	B&B	2.5'Cal
	Cp	2	Celtis occidentalis 'JFS-KSLU1' TM / Prairie Sentinel Common Hackberry	B&B	2'Cal
EVERGREEN TREES	CODE	QTY	BOTANICAL / COMMON NAME	CONT	SIZE
	Jm2	4	Juniperus chinensis 'Mounbatten' / Mounbatten Juniper	B & B	5 HT. (MIN)
	JCT	10	Juniperus chinensis 'Trautman' / Trautman Juniper	B&B	5 HT. (MIN)
ORNAMENTAL TREES	CODE	QTY	BOTANICAL / COMMON NAME	CONT	SIZE
	ATG	3	Acer latericum 'Garkon' TM / Hot Wings Tatarian Maple	B&B	2.5'Cal
	CC	3	Carpinus caroliniana / American Hornbeam	B&B	2.5'Cal
	CM	1	Cornus mas 'Golden Glory' / Golden Glory Cornelian Cherry	B & B	1.5'Cal
	HV	1	Hamamelis virginiana / Common Witch Hazel	B & B	6 HT (MIN), MULTI-STEMMED
	Ma	4	Malus x 'Adirondack' / Adirondack Crabapple	B&B	2'Cal
	OV	1	Ostrya virginiana / American Hophornbeam	B&B	

NOTE: PLANT SCHEDULE FOR SHRUBS, PERENNIALS, & BIORETENTION BASIN CAN BE FOUND ON L102. SEE SHEET L100 FOR TREE PROTECTION INFORMATION.

LEGEND

- EXISTING SHADE TREES
- EXISTING FRUIT/ NUT/ ORNAMENTAL TREES
- EXISTING EVERGREEN TREES
- TREE PROTECTION
- BLUEGRASS SEED
- LANDSCAPE AREA: SHREDDED HARDWOOD MULCH
- BIORETENTION PLUGS
- RECLAIMED OUTCROP STONE
- SEATING AND TRASH/REC RECEPTACLES

SHEET INFORMATION



SHEET INFORMATION

**PROGRESS DOCUMENTS
NOT FOR CONSTRUCTION**

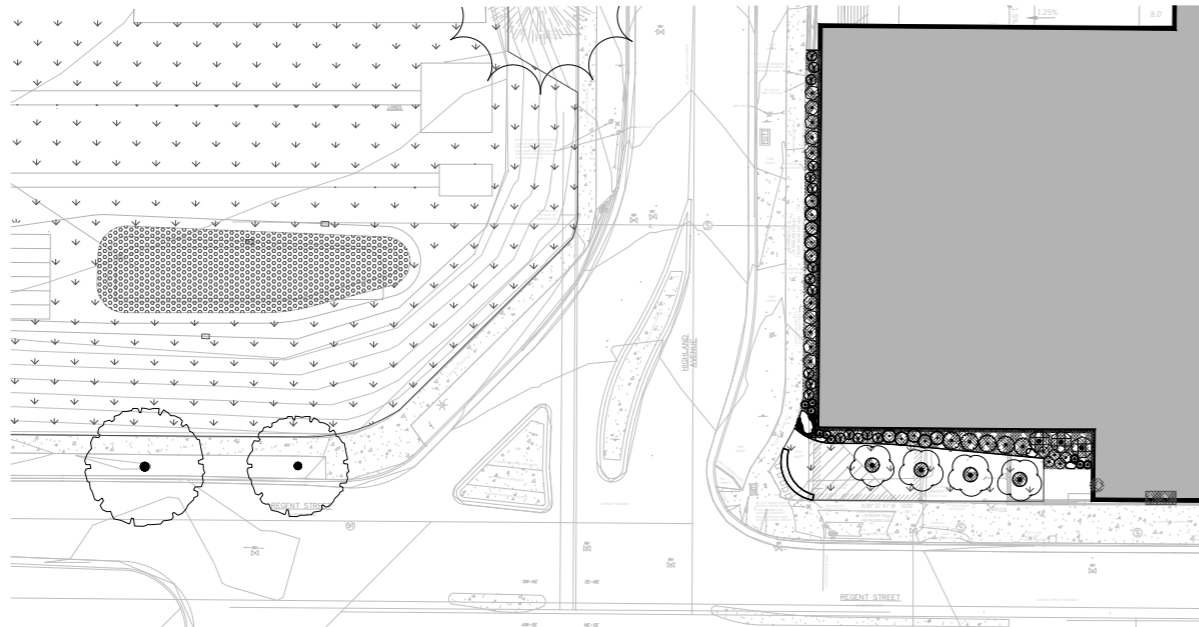
These documents reflect progress and intent and may be subject to change, including additional detail. These are not final construction documents and shall not be used for final bidding or construction-related purposes.

PROJECT MANAGER

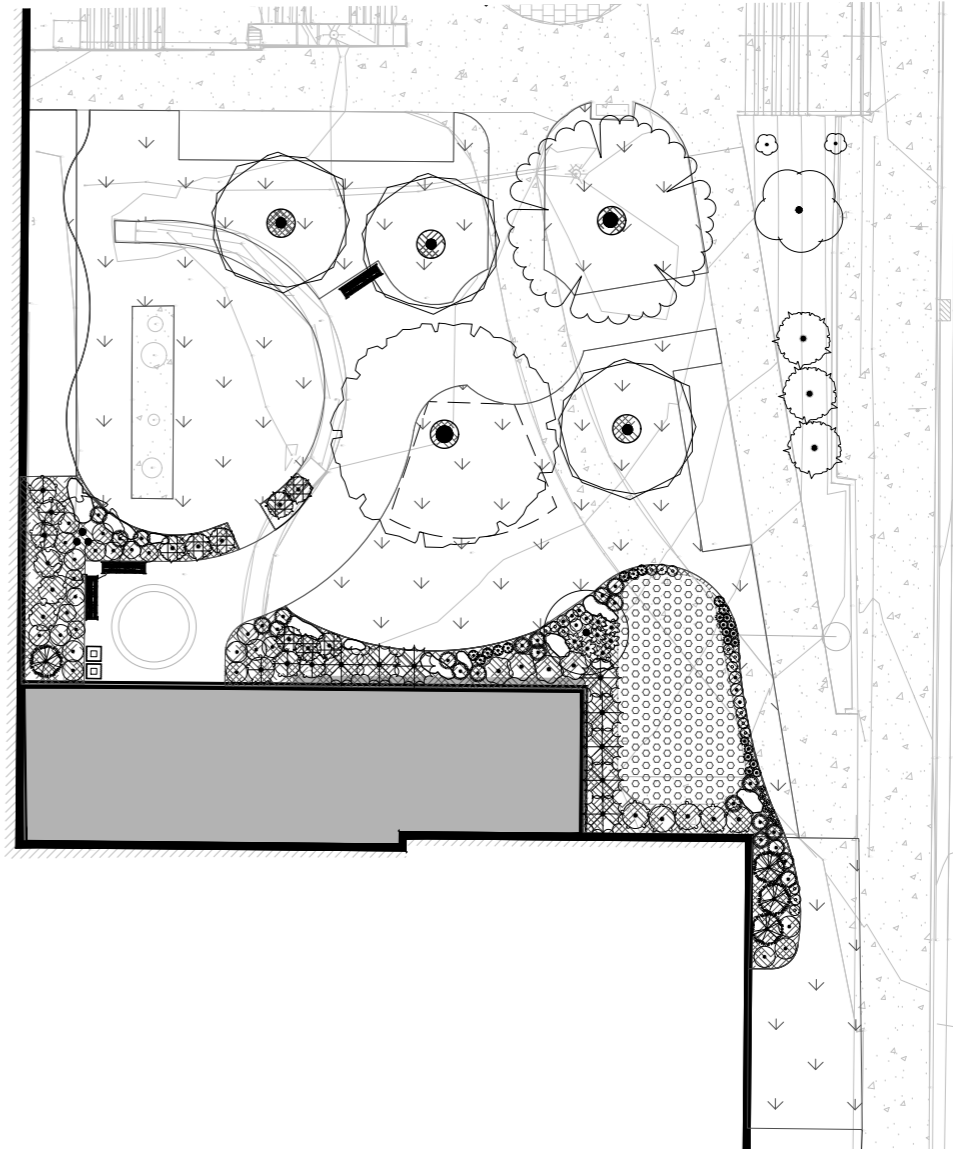
PROJECT NUMBER

LANDSCAPE PLAN

L101



A1 LANDSCAPE ENLARGEMENT 1
SCALE: 1" = 20'-0"



A2 LANDSCAPE ENLARGEMENT 2
SCALE: 1" = 10'-0"

EVERGREEN SHRUBS	CODE	QTY	BOTANICAL / COMMON NAME	CONT
	Jm	11	Juniperus sabinum 'Monna' / Calgary Carpet Juniper	5 gal
	Jb	21	Juniperus sabinum 'Blue Forest' / Blue Forest Juniper	5 gal
	Tmt	13	Taxus x media 'Tauton' / Tauton Yew	5 gal
ORNAMENTAL GRASSES	CODE	QTY	BOTANICAL / COMMON NAME	CONT
	sss	14	Schizachyrium scoparium 'Smoke Signal' / Smoke Signal Little Bluestem	1 gal
	shl	27	Sporobolus heterolepis 'Tara' / Prairie Dropseed	1 gal
DECIDUOUS SHRUBS	CODE	QTY	BOTANICAL / COMMON NAME	CONT
	Al	24	Aonon melanocarpa 'Morton' / Inyo Beauty Black Chokeberry	3 gal
	Cl	5	Cornus stolonifera 'Farrow' TM / Arctic Fire Red Taiq Dogwood	3 gal
	Ca	3	Corylus americana / American Hazelnut	5 gal
	Cl	22	Diervilla ionifera 'Michigan Sunset' / Dwarf Bush Honeyuckle	3 gal
	Hp	11	Hydrangea paniculata 'Little Quick Fire' / Little Quick Fire Panicle Hydrangea	5 gal
	Ha2	7	Hypericum kalmianum 'Ames' / Ames St. Johnswort	3 gal
	Pa	23	Physocarpus opulifolius 'Donna May' TM / Little Devil Ninebark	3 gal
	Ra	22	Rhus aromatica 'Gro-Low' / Gro-Low Fragrant Sumac	3 gal
	Vc	5	Viburnum cassinoides / Withered Viburnum	3 gal
	Vd	3	Viburnum dentatum 'XLMeserveen' TM / Little Joe Viburnum	3 gal

HERBACEOUS PERENNIALS	CODE	QTY	BOTANICAL / COMMON NAME	CONT		
	am	16	Allium x 'Millenium' / Millenium Ornamental Onion	1 gal		
	abi	13	Amsonia x 'Blue Ice' / Blue Ice Bluestar	1 gal		
	gbk	8	Geranium x cantabrigiense 'Blokovo Kamina' / Blokovo Kamina Hybrid Cranebill	1 gal		
	iga	18	Iris germanica 'Armageddon' / Armageddon German Iris	1 gal		
	Ms	7	Matteuccia struthiopteris / Ostrich Fern	1 gal		
	neb	15	Nepeta x 'Early Bird' / Early Bird Catmint	1 gal		
GROUND COVERS	CODE	QTY	BOTANICAL / COMMON NAME	CONT	CAL	SPACING
	acn	3,107 sf	BIORETENTION BASIN Allium cernuum / Nodding Onion			3" plug
	dpp	323	Dalea purpurea / Purple Prairie Clover			3" plug
	ihv	323	Iris versicolor / Blue Flag			3" plug
	lsg	323	Lobelia siphilitica / Great Lobelia			3" plug
	mfb	323	Monarda fistulosa / Bergamot			3" plug
	ptg	323	Pteridium aquilinum / Switch Grass			3" plug
	rhd	323	Rudbeckia hirta / Sweet Black-eyed Susan			3" plug
	sng	323	Sorghastrum nutans / Indian Grass			3" plug
	shp	323	Sporobolus heterolepis / Prairie Dropseed			3" plug
	sna	323	Symphotrichum novae-angliae / New England Aster			3" plug

- LEGEND**
- EXISTING SHADE TREES
 - EXISTING FRUIT/ NUT/ ORNAMENTAL TREES
 - EXISTING EVERGREEN TREES
 - TREE PROTECTION
 - BLUEGRASS SEED
 - LANDSCAPE AREA: SHREDDED HARDWOOD MULCH
 - BIORETENTION PLUGS
 - RECLAIMED OUTCROP STONE
 - SEATING AND TRASH/REC RECEPTACLES

NOTE: PLANT SCHEDULE FOR TREES CAN BE FOUND ON L101. SEE SHEET L100 FOR TREE PROTECTION INFORMATION.

eu:a

milwaukee 333 East Chicago Street
Milwaukee, Wisconsin 53202
414.271.5350

madison 309 West Johnson Street, Suite 202
Madison, Wisconsin 53703
608.442.5350

denver 1699 Wynkoop Street, Suite 300
Denver, Colorado 80202
303.596.4500

PROJECT INFORMATION

MMSD - WEST HIGH SCHOOL ADDITION & RENOVATION

30 ASH ST.
MADISON, WI 53726

ISSUANCE AND REVISIONS

DATE	DESCRIPTION
06/01/2021	INITIAL UDC AND PLAN COMMISSION

KEY PLAN



SHEET INFORMATION

PROGRESS DOCUMENTS NOT FOR CONSTRUCTION

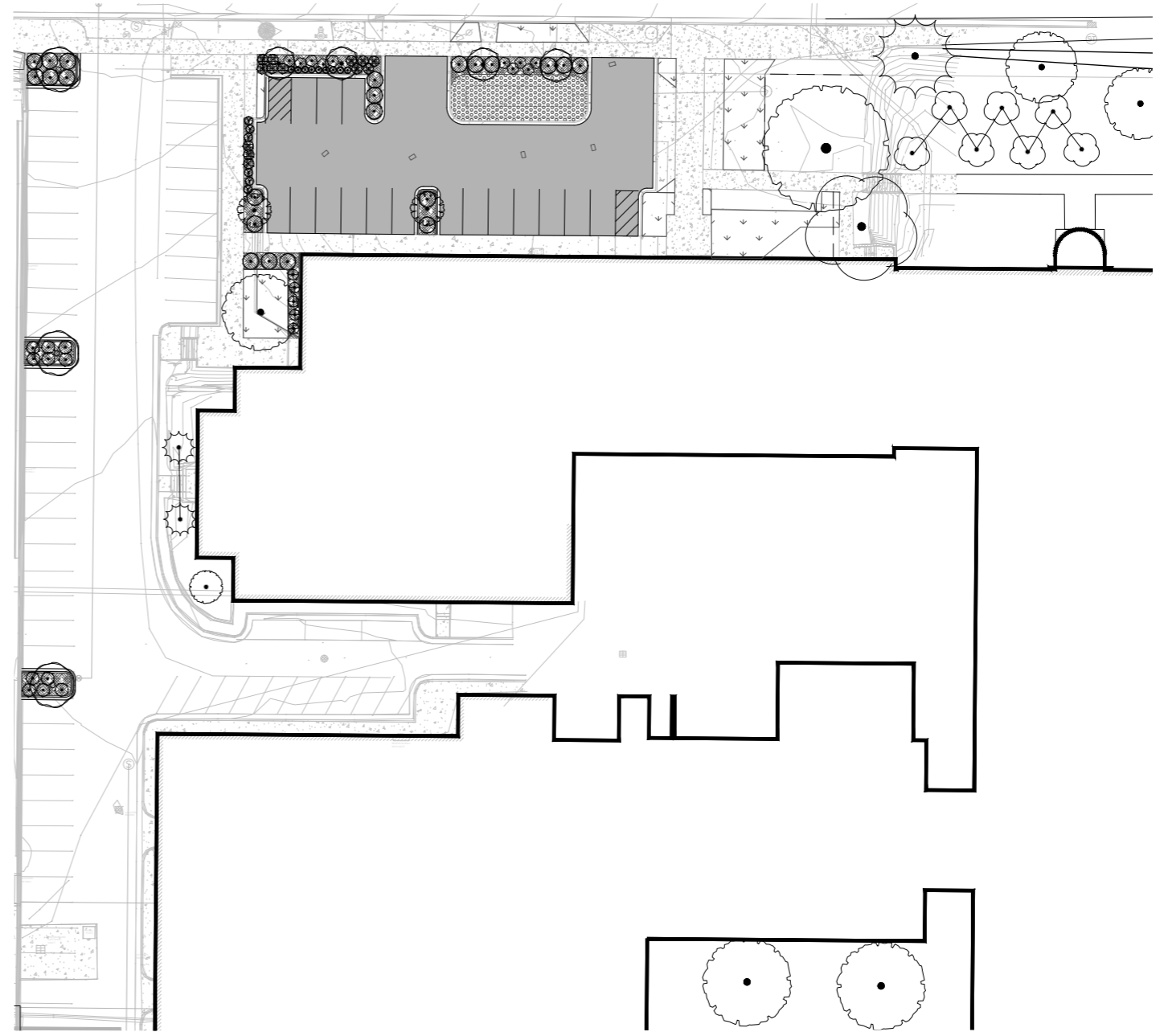
These documents reflect progress and intent and may be subject to change, including additional detail. These are not final construction documents and shall not be used for final bidding or construction-related purposes.

PROJECT MANAGER

PROJECT NUMBER

LANDSCAPE ENLARGEMENTS

L102



B1 LANDSCAPE ENLARGEMENT 1
SCALE: 1" = 20'-0"

LEGEND

- EXISTING SHADE TREES
- EXISTING FRUIT/ NUT/ ORNAMENTAL TREES
- EXISTING EVERGREEN TREES
- TREE PROTECTION
- BLUEGRASS SEED
- LANDSCAPE AREA: SHREDDED HARDWOOD MULCH
- BIORETENTION PLUGS
- RECLAIMED OUTCROP STONE
- SEATING AND TRASH/REC RECEPTACLES

NOTE: PLANT SCHEDULE FOR TREES CAN BE FOUND ON L101.
PLANT SCHEDULE FOR SHRUBS, PERENNIALS, & BIORETENTION BASIN CAN BE FOUND ON L102. SEE SHEET L100 FOR TREE PROTECTION INFORMATION.



milwaukee 333 East Chicago Street
Milwaukee, Wisconsin 53202
414.271.5350

madison 309 West Johnson Street, Suite 202
Madison, Wisconsin 53703
608.442.5350

denver 1699 Wynkoop Street, Suite 300
Denver, Colorado 80202
303.596.4500

PROJECT INFORMATION

MMSD - WEST HIGH SCHOOL ADDITION & RENOVATION

**30 ASH ST.
MADISON, WI 53726**

ISSUANCE AND REVISIONS

DATE	DESCRIPTION
06/01/2021	INITIAL UDC AND PLAN COMMISSION

KEY PLAN



SHEET INFORMATION

**PROGRESS DOCUMENTS
NOT FOR CONSTRUCTION**

These documents reflect progress and intent and may be subject to change, including additional detail. These are not final construction documents and shall not be used for final bidding or construction-related purposes.

PROJECT MANAGER
PROJECT NUMBER

LANDSCAPE ENLARGEMENTS

L103

1

2

3

4

5

6

7

E



1. VIEW AT THE CORNER ASH STREET AND REGENT STREET



2. VIEW OF ASH STREET ENTRANCE



3. VIEW FROM ASH STREET

D



4. VIEW FROM ASH STREET TO NORTH ELEVATION



5. VIEW OF VAN HISE GYM



6. VIEW TO WEST GYM

C

B



7. VIEW FROM REGENT STREET TO GYM



8. VIEW TO REGENT STREET ENTRANCE



PHOTO KEY

Map data ©2021 Google



milwaukee 333 East Chicago Street
Milwaukee, Wisconsin 53202
414.271.5350

madison 309 West Johnson Street, Suite 202
Madison, Wisconsin 53703
608.442.2550

denver 1809 Wynkoop Street, Suite 300
Denver, Colorado 80202
303.595.4500

PROJECT INFORMATION

**MMSD - WEST HS
ADDITION AND
RENOVATION**

D 30 ASH ST,
MADISON, WI 53726

ISSUANCE AND REVISIONS

DATE	DESCRIPTION
06/07/2021	INITIAL UDC AND PLAN COMMISSION

C

KEY PLAN

B

SHEET INFORMATION

**PROGRESS DOCUMENTS
NOT FOR CONSTRUCTION**

These documents reflect progress and intent and may be subject to change, including additional detail. These are not final construction documents and shall not be used for final bidding or construction-related purposes.

PROJECT MANAGER JM

A PROJECT NUMBER 20535-01

ARCHITECTURAL
DESIGN CONTEXT

A-01

© 2021 Epstein Uhen Architects, Inc.

1

2

3

4

5

6

7

1

2

3

4

5

6

7



milwaukee 333 East Chicago Street
Milwaukee, Wisconsin 53202
414.271.5350

madison 309 West Johnson Street, Suite 202
Madison, Wisconsin 53703
608.442.2550

denver 1809 Wynkoop Street, Suite 300
Denver, Colorado 80202
303.595.4500

PROJECT INFORMATION

**MMSD - WEST HS
ADDITION AND
RENOVATION**

30 ASH ST,
MADISON, WI 53726

ISSUANCE AND REVISIONS

DATE	DESCRIPTION
06/07/2021	INITIAL UDC AND PLAN COMMISSION

KEY PLAN

SHEET INFORMATION

**PROGRESS DOCUMENTS
NOT FOR CONSTRUCTION**

These documents reflect progress and intent and may be subject to change, including additional detail. These are not final construction documents and shall not be used for final bidding or construction-related purposes.

PROJECT MANAGER JM
PROJECT NUMBER 20535-01

PERSPECTIVES

A-22

© 2021 Eppstein Uhen Architects, Inc.



PROPOSED ENTRY ELEVATION



ASH STREET ELEVATION



AERIAL VIEW OF ASH STREET ELEVATION



VIEW OF WELCOME CENTER



ASH STREET LOOKING SOUTH



AERIAL VIEW OF ASH STREET



ASH STREET VIEW

E

D

DESIGN PRECEDENT FOR ADDITIONS

C

B

A

E

D

C

B

A

1

2

3

4

5

6

7

E



AERIAL VIEW OF ATHLETIC ADDITION

D



REGENT STREET LOOKING WEST

C



VIEW OF ATHLETIC ENTRY FROM REGENT STREET



VIEW OF ATHLETIC ENTRY FROM REGENT STREET

B



SPEEDWAY VIEW LOOKING EAST

A



AERIAL VIEW AT VAN HISE AND HIGHLAND



milwaukee 333 East Chicago Street
Milwaukee, Wisconsin 53202
414.271.5350

madison 309 West Johnson Street, Suite 202
Madison, Wisconsin 53703
608.442.5350

denver 1809 Wynkoop Street, Suite 300
Denver, Colorado 80202
303.595.4500

PROJECT INFORMATION

**MMSD - WEST HS
ADDITION AND
RENOVATION**

30 ASH ST,
MADISON, WI 53726

ISSUANCE AND REVISIONS

DATE	DESCRIPTION
06/07/2021	INITIAL UDC AND PLAN COMMISSION

KEY PLAN

SHEET INFORMATION

**PROGRESS DOCUMENTS
NOT FOR CONSTRUCTION**

These documents reflect progress and intent and may be subject to change, including additional detail. These are not final construction documents and shall not be used for final bidding or construction-related purposes.

PROJECT MANAGER JM

PROJECT NUMBER 20535-01

PERSPECTIVES

A-23



WELCOME CENTER



EXISTING BRICK AT WELCOME CENTER



MATERIALS FOR WELCOME CENTER ADDITION



milwaukee 333 East Chicago Street
Milwaukee, Wisconsin 53202
414.271.5350
madison 309 West Johnson Street, Suite 202
Madison, Wisconsin 53703
608.442.2550
denver 1809 Wynkoop Street, Suite 300
Denver, Colorado 80202
303.595.4500

PROJECT INFORMATION
MMSD - WEST HS
ADDITION AND
RENOVATION

30 ASH ST,
MADISON, WI 53726

ISSUANCE AND REVISIONS

DATE	DESCRIPTION
06/01/2021	INITIAL UDC AND PLAN COMMISSION

KEY PLAN



GLASS FOR ALL NEW ADDITIONS SOLARBAN 70VT OPTIGRAY



CORRUGATED MECHANICAL ROOF
SCREEN COLOR WILL MATCH MEDIUM
BRONZE WINDOW FRAMES



WALL SCONCE AT ATHLETIC
ADDITION COLOR WILL MATCH
BRONZE WINDOW FRAMES



ATHLETIC ADDITION



EXISTING BRICK AT GYM



SHEET INFORMATION

**PROGRESS DOCUMENTS
NOT FOR CONSTRUCTION**
These documents reflect progress and intent and may be subject to change, including additional detail. These are not final construction documents and shall not be used for final bidding or construction-related purposes.

PROJECT MANAGER JM
PROJECT NUMBER 20535-01

PERSPECTIVES



milwaukee 333 East Chicago Street
Milwaukee, Wisconsin 53202
414.271.5350

madison 309 West Johnson Street, Suite 202
Madison, Wisconsin 53703
608.442.2550

denver 1809 Wynkoop Street, Suite 300
Denver, Colorado 80202
303.595.4500

PROJECT INFORMATION

**MMSD - WEST HS
ADDITION AND
RENOVATION**

**30 ASH ST,
MADISON, WI 53726**

ISSUANCE AND REVISIONS

DATE	DESCRIPTION
06/07/2021	INITIAL UDC AND PLAN COMMISSION

KEY PLAN

SHEET INFORMATION

**PROGRESS DOCUMENTS
NOT FOR CONSTRUCTION**

These documents reflect progress and intent and may be subject to change, including additional detail. These are not final construction documents and shall not be used for final bidding or construction-related purposes.

PROJECT MANAGER JM

PROJECT NUMBER 20535-01

LOWER LEVEL
FLOOR PLAN

A-02

© 2021 Epstein Uhen Architects, Inc.

E

D

C

B

A

E

D

C

B

A

1

2

3

4

5

6

7

1

2

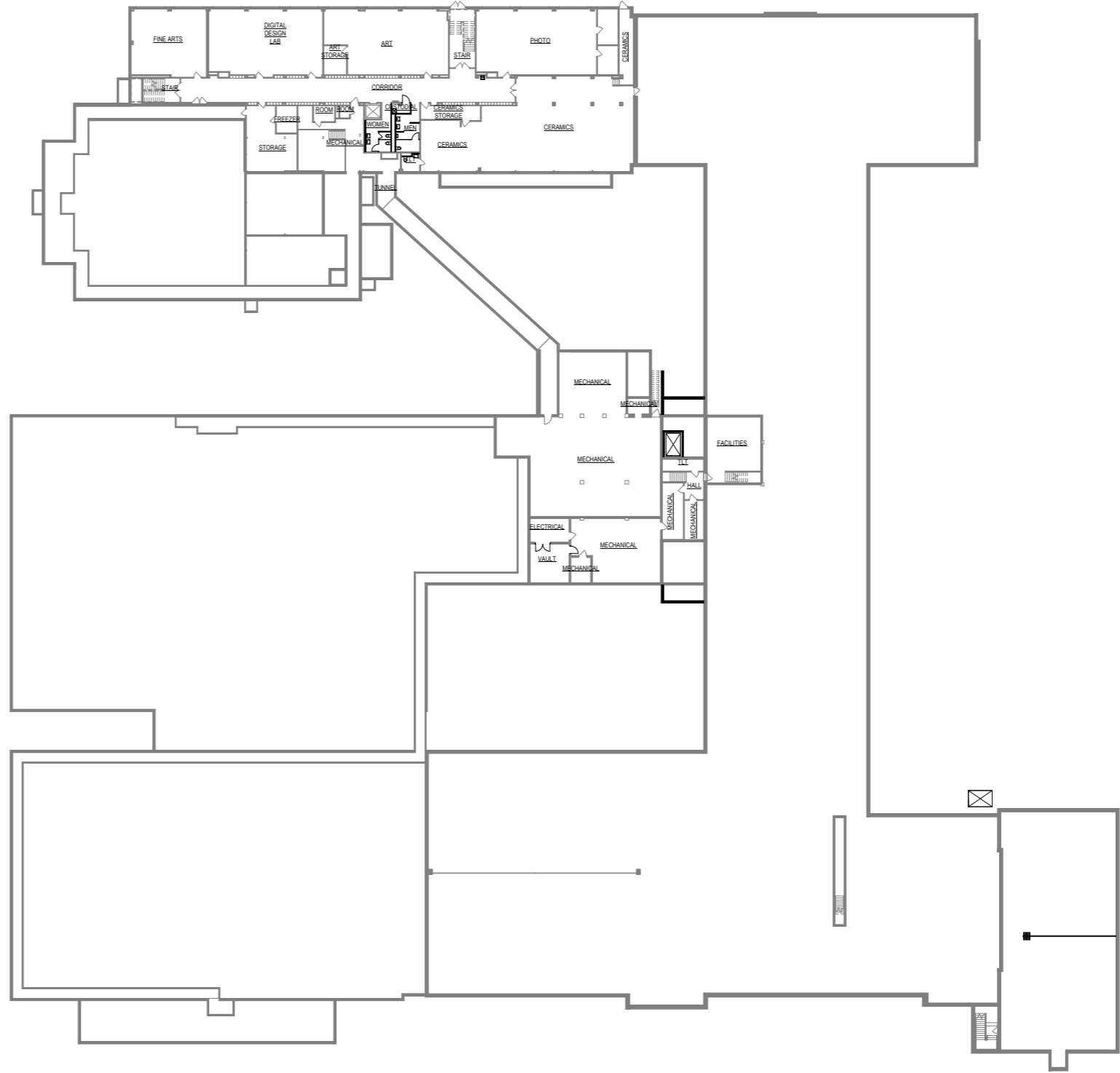
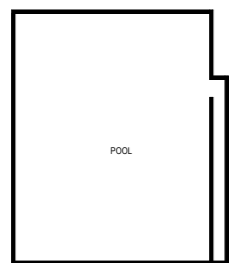
3

4

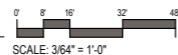
5

6

7



LOWER LEVEL FLOOR PLAN
3/64" = 1'-0"



FLOOR PLAN LEGEND	
	BUILDING ADDITION



milwaukee 333 East Chicago Street
Milwaukee, Wisconsin 53202
414.271.5350

madison 309 West Johnson Street, Suite 202
Madison, Wisconsin 53703
608.442.2550

denver 1809 Wynkoop Street, Suite 300
Denver, Colorado 80202
303.595.4500

PROJECT INFORMATION

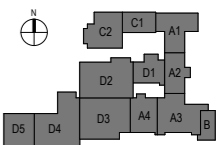
**MMSD - WEST HS
ADDITION AND
RENOVATION**

30 ASH ST,
MADISON, WI 53726

ISSUANCE AND REVISIONS

DATE	DESCRIPTION
06/07/2021	INITIAL UDC AND PLAN COMMISSION

KEY PLAN



SHEET INFORMATION

**PROGRESS DOCUMENTS
NOT FOR CONSTRUCTION**

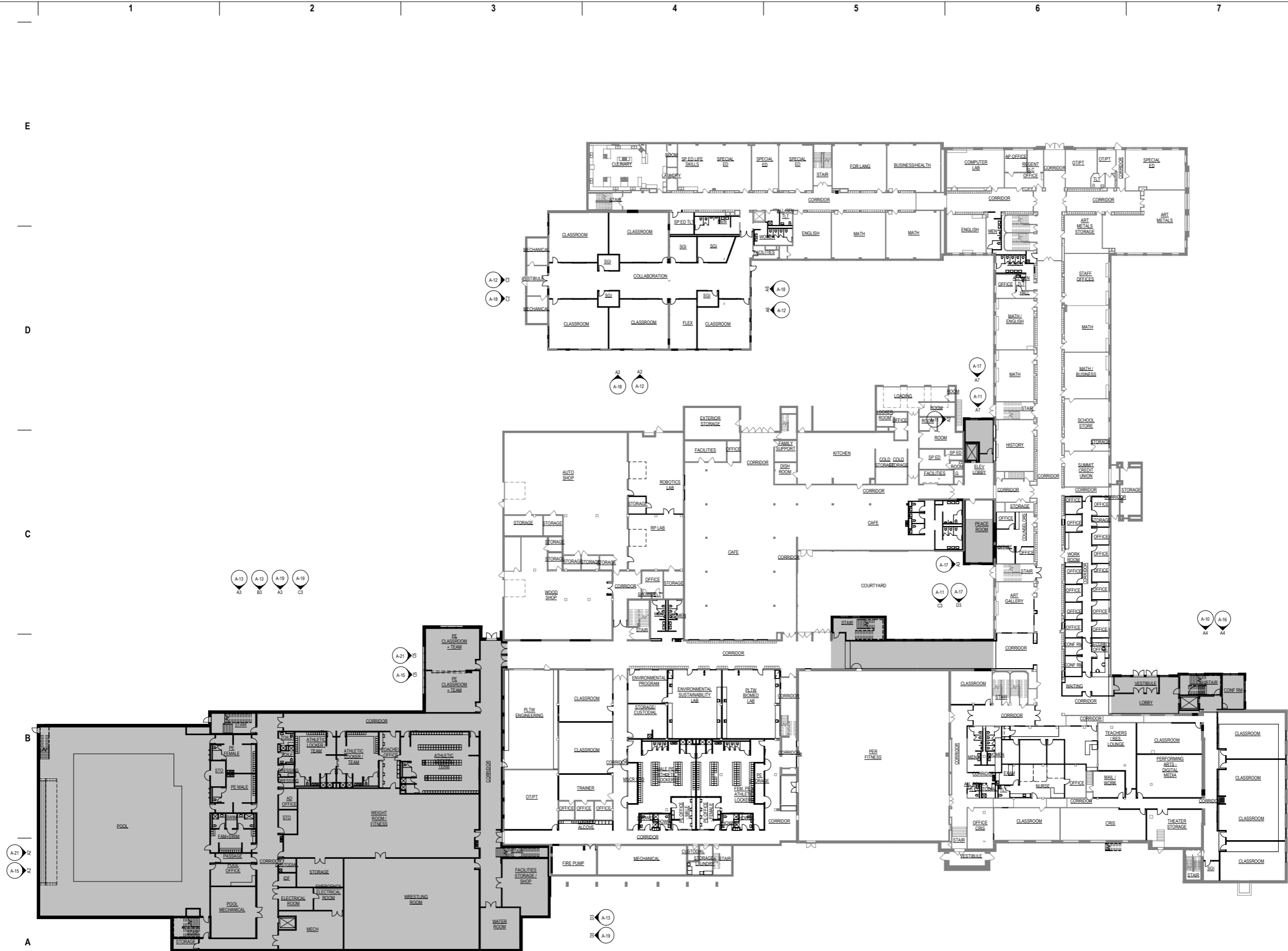
These documents reflect progress and intent and may be subject to change, including additional detail. These are not final construction documents and shall not be used for final bidding or construction-related purposes.

PROJECT MANAGER JM
PROJECT NUMBER 20535-01

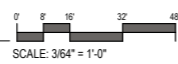
1ST FLOOR PLAN

A-03

© 2021 Epstein Uhan Architects, Inc.



A2 1ST FLOOR PLAN
3/64" = 1'-0"



FLOOR PLAN LEGEND

■ BUILDING ADDITION

1 2 3 4 5 6 7



milwaukee 333 East Chicago Street
Milwaukee, Wisconsin 53202
414.271.5350

madison 309 West Johnson Street, Suite 202
Madison, Wisconsin 53703
608.442.2550

denver 1809 Wynkoop Street, Suite 300
Denver, Colorado 80202
303.595.4500

PROJECT INFORMATION

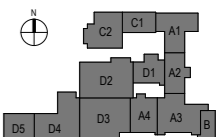
MMSD - WEST HS
ADDITION AND
RENOVATION

30 ASH ST,
MADISON, WI 53726

ISSUANCE AND REVISIONS

DATE	DESCRIPTION
06/07/2021	INITIAL UDC AND PLAN COMMISSION

KEY PLAN



SHEET INFORMATION

**PROGRESS DOCUMENTS
NOT FOR CONSTRUCTION**

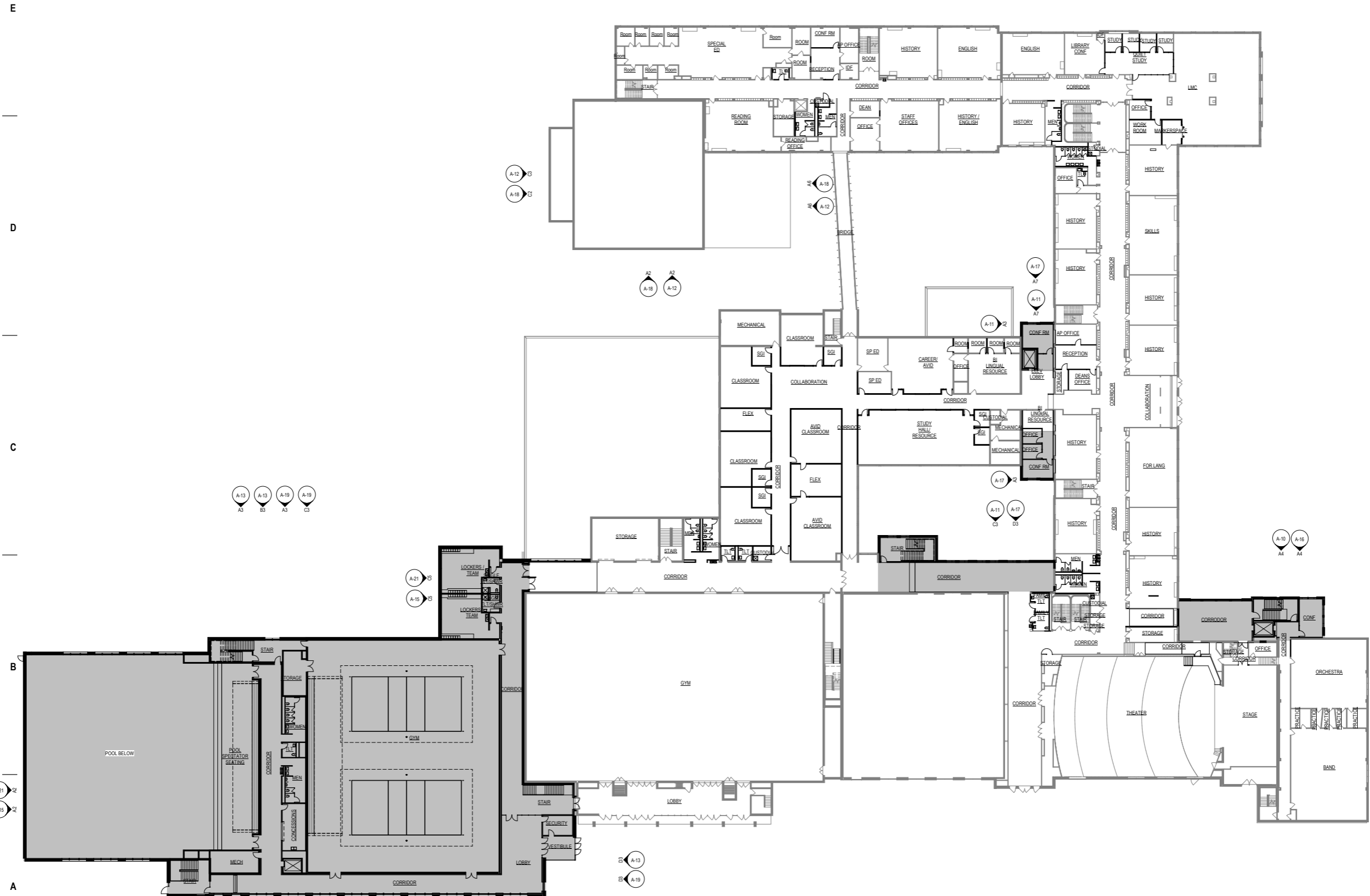
These documents reflect progress and intent and may be subject to change, including additional detail. These are not final construction documents and shall not be used for final bidding or construction-related purposes.

PROJECT MANAGER JM
PROJECT NUMBER 20535-01

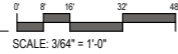
SECOND FLOOR
PLAN

A-04

© 2021 Epstein Uhen Architects, Inc.



A2 2ND FLOOR PLAN
3/64" = 1'-0"



FLOOR PLAN LEGEND

■ BUILDING ADDITION



milwaukee 333 East Chicago Street
Milwaukee, Wisconsin 53202
414.271.5350

madison 309 West Johnson Street, Suite 202
Madison, Wisconsin 53703
608.442.2550

denver 1809 Wynkoop Street, Suite 300
Denver, Colorado 80202
303.595.4500

PROJECT INFORMATION

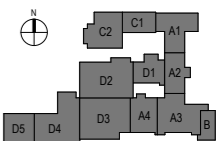
**MMSD - WEST HS
ADDITION AND
RENOVATION**

30 ASH ST,
MADISON, WI 53726

ISSUANCE AND REVISIONS

DATE	DESCRIPTION
06/01/2021	INITIAL UDC AND PLAN COMMISSION

KEY PLAN



SHEET INFORMATION

**PROGRESS DOCUMENTS
NOT FOR CONSTRUCTION**

These documents reflect progress and intent and may be subject to change, including additional detail. These are not final construction documents and shall not be used for final bidding or construction-related purposes.

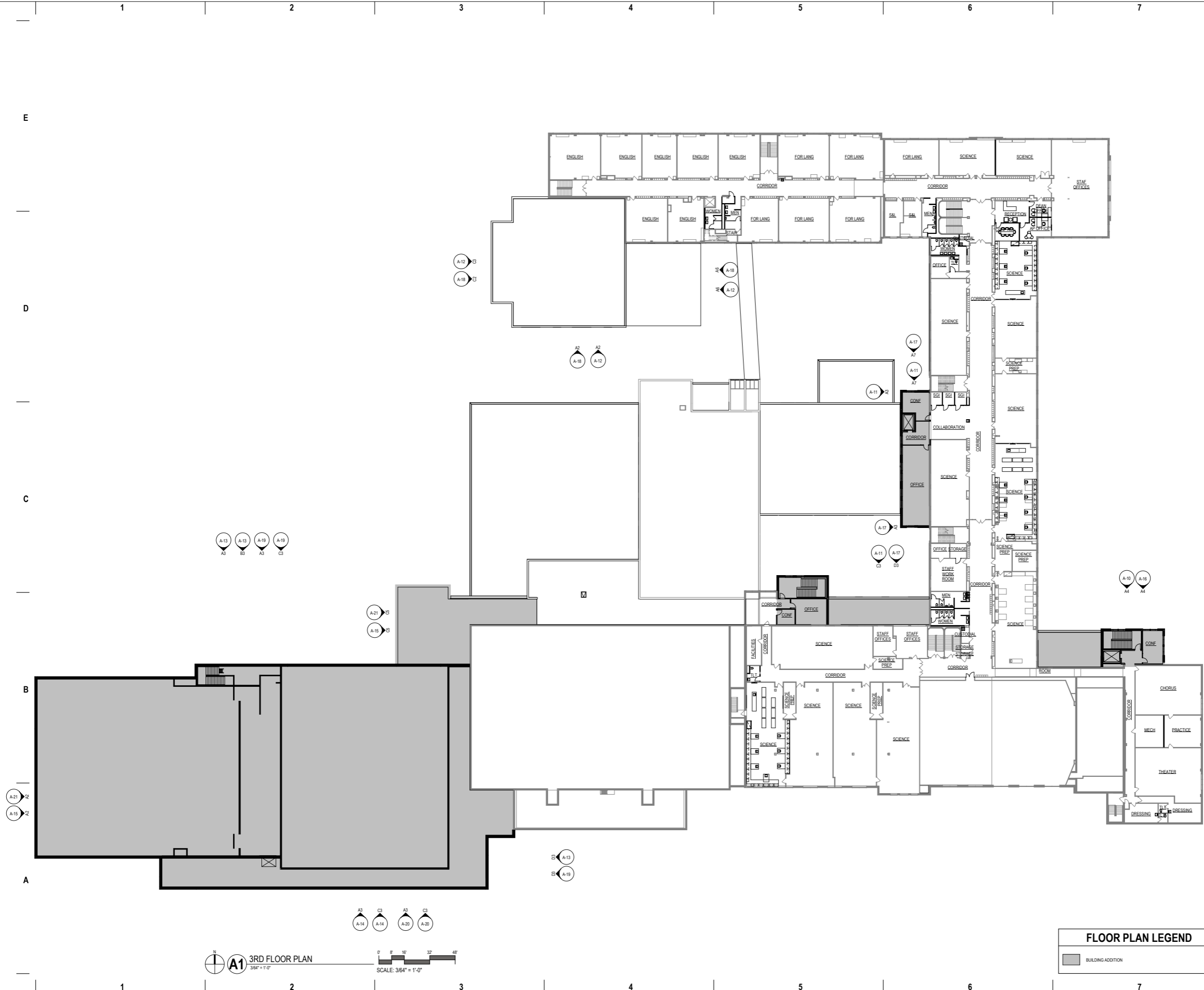
PROJECT MANAGER JM

PROJECT NUMBER 20535-01

THIRD FLOOR PLAN

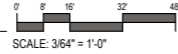
A-05

© 2021 Epstein Uhan Architects, Inc.



FLOOR PLAN LEGEND	
	BUILDING ADDITION

A1 3RD FLOOR PLAN
3/16" = 1'-0"





milwaukee 333 East Chicago Street
Milwaukee, Wisconsin 53202
414.271.5350

madison 309 West Johnson Street, Suite 202
Madison, Wisconsin 53703
608.442.2550

denver 1809 Wynkoop Street, Suite 300
Denver, Colorado 80202
303.595.4500

PROJECT INFORMATION

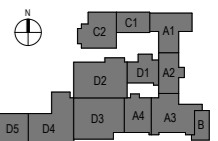
**MMSD - WEST HS
ADDITION AND
RENOVATION**

**30 ASH ST,
MADISON, WI 53726**

ISSUANCE AND REVISIONS

DATE	DESCRIPTION
05/07/2021	INITIAL UDC AND PLAN COMMISSION

KEY PLAN



SHEET INFORMATION

**PROGRESS DOCUMENTS
NOT FOR CONSTRUCTION**

These documents reflect progress and intent and may be subject to change, including additional detail. These are not final construction documents and shall not be used for final bidding or construction-related purposes.

PROJECT MANAGER JM
PROJECT NUMBER 20535-01

**FOURTH FLOOR
PLAN**

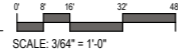
A-06

© 2021 Epstein Uhen Architects, Inc.



FLOOR PLAN LEGEND	
	BUILDING ADDITION

A1 4TH FLOOR & ROOF PLAN
3/64" = 1'-0"





milwaukee 333 East Chicago Street
Milwaukee, Wisconsin 53202
414.271.5350

madison 309 West Johnson Street, Suite 202
Madison, Wisconsin 53703
608.442.2550

denver 1809 Wynkoop Street, Suite 300
Denver, Colorado 80202
303.595.4500

PROJECT INFORMATION

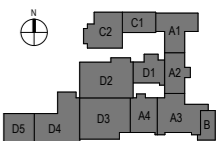
**MMSD - WEST HS
ADDITION AND
RENOVATION**

**30 ASH ST,
MADISON, WI 53726**

ISSUANCE AND REVISIONS

DATE	DESCRIPTION
05/07/2021	INITIAL UDC AND PLAN COMMISSION

KEY PLAN



SHEET INFORMATION

**PROGRESS DOCUMENTS
NOT FOR CONSTRUCTION**

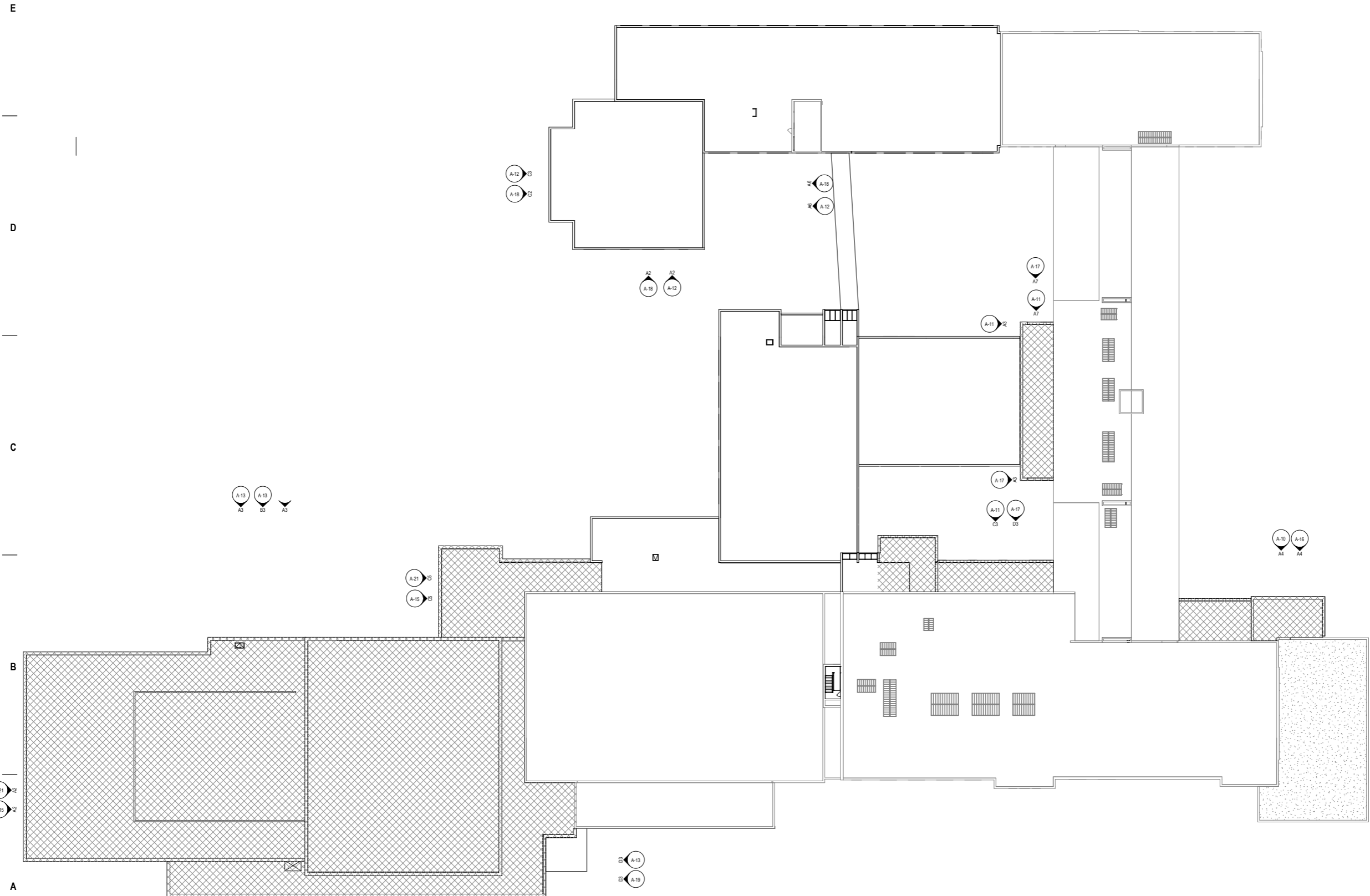
These documents reflect progress and intent and may be subject to change, including additional detail. These are not final construction documents and shall not be used for final bidding or construction-related purposes.

PROJECT MANAGER JM
PROJECT NUMBER 20535-01

ROOF PLAN

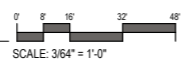
A-07

© 2021 Epstein Uhen Architects, Inc.



ROOF PLAN LEGEND	
	NEW MODIFIED ASPHALT BITUMEN ROOF

A1 ROOF PLAN
3/64" = 1'-0"



PROJECT INFORMATION

MMSD - WEST HS
ADDITION AND
RENOVATION

30 ASH ST,
MADISON, WI 53726

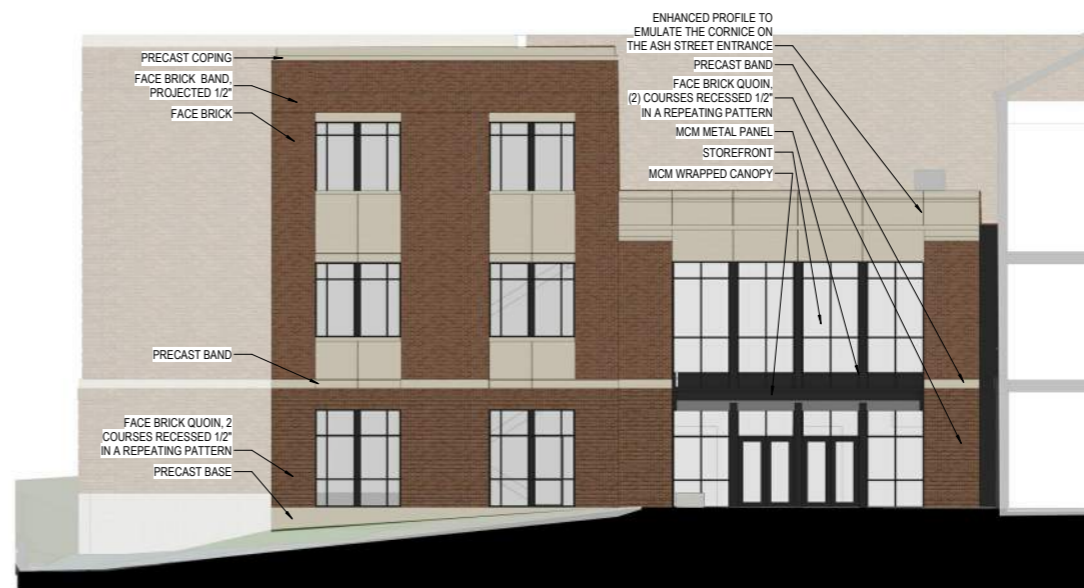
ISSUANCE AND REVISIONS

DATE	DESCRIPTION
06/01/2021	INITIAL UDC AND PLAN COMMISSION

KEY PLAN



A1 ENTRY ADDITION EAST - UDC
1/8" = 1'-0"



A4 ENTRY ADDITION - NORTH - UDC
1/8" = 1'-0"

SHEET INFORMATION

**PROGRESS DOCUMENTS
NOT FOR CONSTRUCTION**

These documents reflect progress and intent and may be subject to change, including additional detail. These are not final construction documents and shall not be used for final bidding or construction-related purposes.

PROJECT MANAGER JM

PROJECT NUMBER 20535-01

BUILDING
ELEVATIONS



milwaukee 333 East Chicago Street
Milwaukee, Wisconsin 53202
414.271.5350

madison 309 West Johnson Street, Suite 202
Madison, Wisconsin 53703
608.442.2550

denver 1809 Wynkoop Street, Suite 300
Denver, Colorado 80202
303.595.4500

PROJECT INFORMATION

MMSD - WEST HS
ADDITION AND
RENOVATION

30 ASH ST,
MADISON, WI 53726

ISSUANCE AND REVISIONS

DATE	DESCRIPTION
06/01/2021	INITIAL UDC AND PLAN COMMISSION

KEY PLAN

SHEET INFORMATION

**PROGRESS DOCUMENTS
NOT FOR CONSTRUCTION**

These documents reflect progress and intent and may be subject to change, including additional detail. These are not final construction documents and shall not be used for final bidding or construction-related purposes.

PROJECT MANAGER JM
PROJECT NUMBER 20535-01

BUILDING
ELEVATIONS

A-11

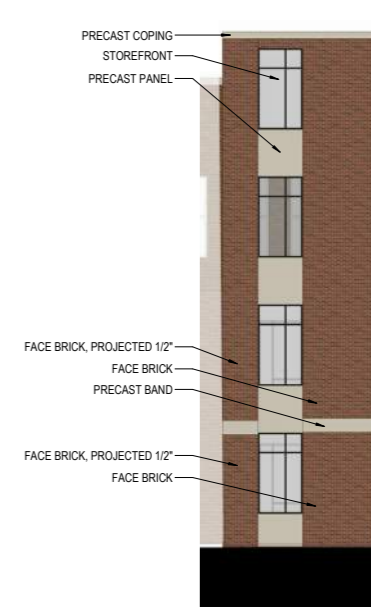
© 2021 Epstein Uhen Architects, Inc.



C3 CIRCULATION ADDITION - NORTH - UDC
1/8" = 1'-0"



A3 ELEVATOR ADDITION - WEST - UDC
1/8" = 1'-0"



A7 ELEVATOR ADDITION - SOUTH - UDC
1/8" = 1'-0"

E

D

C

B

A

C

B

A

1

2

3

4

5

6

7

1

2

3

4

5

6

7



milwaukee 333 East Chicago Street
Milwaukee, Wisconsin 53202
414.271.5350

madison 309 West Johnson Street, Suite 202
Madison, Wisconsin 53703
608.442.2550

denver 1809 Wynkoop Street, Suite 300
Denver, Colorado 80202
303.595.4500

PROJECT INFORMATION

MMSD - WEST HS
ADDITION AND
RENOVATION

30 ASH ST,
MADISON, WI 53726

ISSUANCE AND REVISIONS

DATE	DESCRIPTION
06/07/2021	INITIAL UDC AND PLAN COMMISSION

KEY PLAN

SHEET INFORMATION

**PROGRESS DOCUMENTS
NOT FOR CONSTRUCTION**

These documents reflect progress and intent and may be subject to change, including additional detail. These are not final construction documents and shall not be used for final bidding or construction-related purposes.

PROJECT MANAGER JM
PROJECT NUMBER 20535-01

BUILDING
ELEVATIONS

A-12



C3 VAN HISE - WEST - UDC
1/8" = 1'-0"



A2 VAN HISE - SOUTH - UDC
1/8" = 1'-0"

A6 VAN HISE - EAST - UDC
1/8" = 1'-0"

PROJECT INFORMATION

MMSD - WEST HS
ADDITION AND
RENOVATION

30 ASH ST,
MADISON, WI 53726

ISSUANCE AND REVISIONS

DATE	DESCRIPTION
06/07/2021	INITIAL UDC AND PLAN COMMISSION

KEY PLAN

SHEET INFORMATION

**PROGRESS DOCUMENTS
NOT FOR CONSTRUCTION**

These documents reflect progress and intent and may be subject to change, including additional detail. These are not final construction documents and shall not be used for final bidding or construction-related purposes.

PROJECT MANAGER JM

PROJECT NUMBER 20535-01

BUILDING
ELEVATIONS

E



D3 ATHLETICS ADDITION ENTRY - EAST - UDC
1/8" = 1'-0"

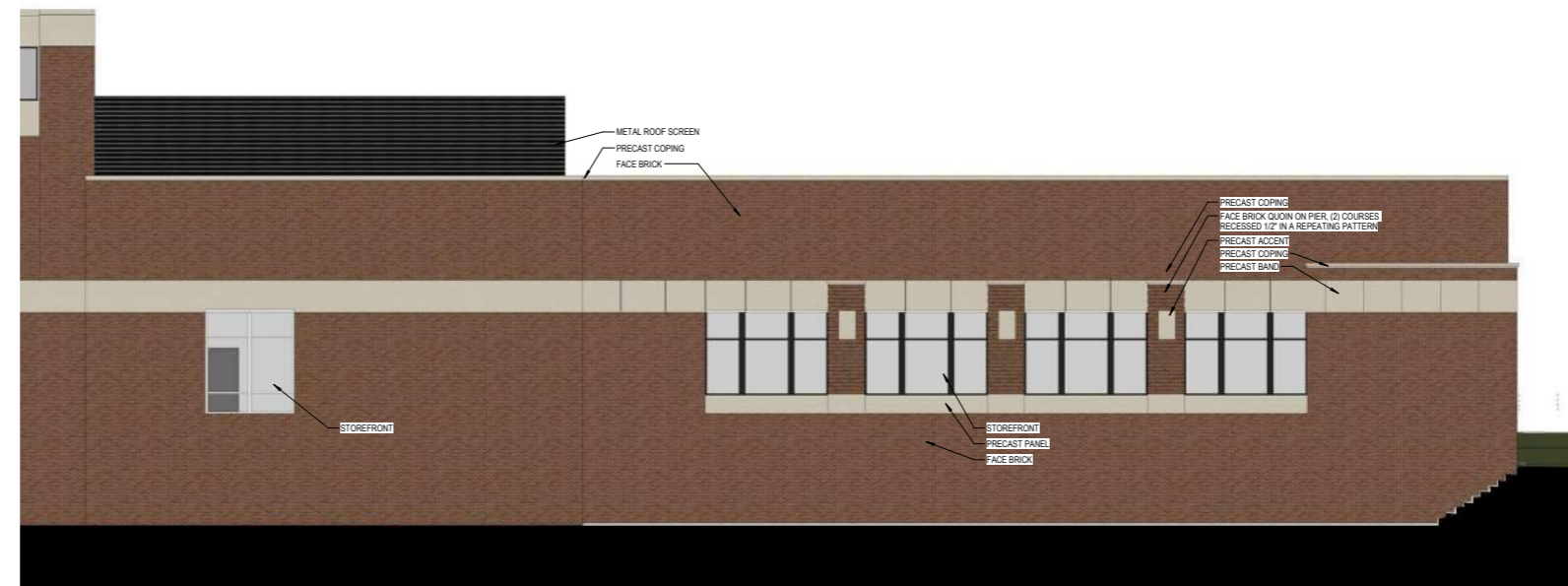
D



B3 ATHLETICS ADDITION - NORTH 2 - UDC
1/8" = 1'-0"

C

B



A3 ATHLETICS ADDITION - NORTH 1 - UDC
1/8" = 1'-0"

A

1

2

3

4

5

6

7

1

2

3

4

5

6

7



milwaukee 333 East Chicago Street
Milwaukee, Wisconsin 53202
414.271.5350

madison 309 West Johnson Street, Suite 202
Madison, Wisconsin 53703
608.442.2550

denver 1809 Wynkoop Street, Suite 300
Denver, Colorado 80202
303.595.4500

PROJECT INFORMATION

**MMSD - WEST HS
ADDITION AND
RENOVATION**

**D 30 ASH ST,
MADISON, WI 53726**

ISSUANCE AND REVISIONS

DATE	DESCRIPTION
06/07/2021	INITIAL UDC AND PLAN COMMISSION

KEY PLAN



C3 ATHLETICS ADDITION - SOUTH 2 - UDC
1/8" = 1'-0"



A3 ATHLETICS ADDITION - SOUTH 1 - UDC
1/8" = 1'-0"

SHEET INFORMATION

**PROGRESS DOCUMENTS
NOT FOR CONSTRUCTION**

These documents reflect progress and intent and may be subject to change, including additional detail. These are not final construction documents and shall not be used for final bidding or construction-related purposes.

PROJECT MANAGER JM
PROJECT NUMBER 20535-01

**BUILDING
ELEVATIONS**



milwaukee 333 East Chicago Street
Milwaukee, Wisconsin 53202
414.271.5350

madison 309 West Johnson Street, Suite 202
Madison, Wisconsin 53703
608.442.2550

denver 1809 Wynkoop Street, Suite 300
Denver, Colorado 80202
303.595.4500

PROJECT INFORMATION

**MMSD - WEST HS
ADDITION AND
RENOVATION**

30 ASH ST,
MADISON, WI 53726

ISSUANCE AND REVISIONS

DATE	DESCRIPTION
06/01/2021	INITIAL UDC AND PLAN COMMISSION

KEY PLAN

SHEET INFORMATION

**PROGRESS DOCUMENTS
NOT FOR CONSTRUCTION**

These documents reflect progress and intent and may be subject to change, including additional detail. These are not final construction documents and shall not be used for final bidding or construction-related purposes.

PROJECT MANAGER JM

PROJECT NUMBER 20535-01

BUILDING
ELEVATIONS

A-15



C5 ATHLETICS ADDITION - WEST 2 - UDC
1/8" = 1'-0"



A2 ATHLETICS ADDITION - WEST - UDC
1/8" = 1'-0"

E

D

C

B

A

B

A

1

2

3

4

5

6

7

1

2

3

4

5

6

7