



Department of Transportation

Thomas Lynch, PE, PTOE, PTP, AICP, Director of Transportation

Madison Municipal Building
215 Martin Luther King Jr Blvd
Suite 109
P.O. Box 2986
Madison, Wisconsin 53701-2986
Phone: (608) 266-4761
Fax: (608) 267-1158

September 22, 2021

Landmarks Commission Errata – September 20, 2021 Meeting

Legistar 67237

Agenda Item 6

Partly because of the advance time needed to submit materials for CLG review, some information in the Submission for CLG Consulting Parking Review and the Staff Presentation was incorrect. The following pages provide corrected sheets for the westbound State Street location:

Madison BRT Submission for CLG Consulting Party Review
Pages 99, 100, 255, 330, 370

Staff Presentation 9-20-2021
Page 6

Madison BRT – Station Renderings



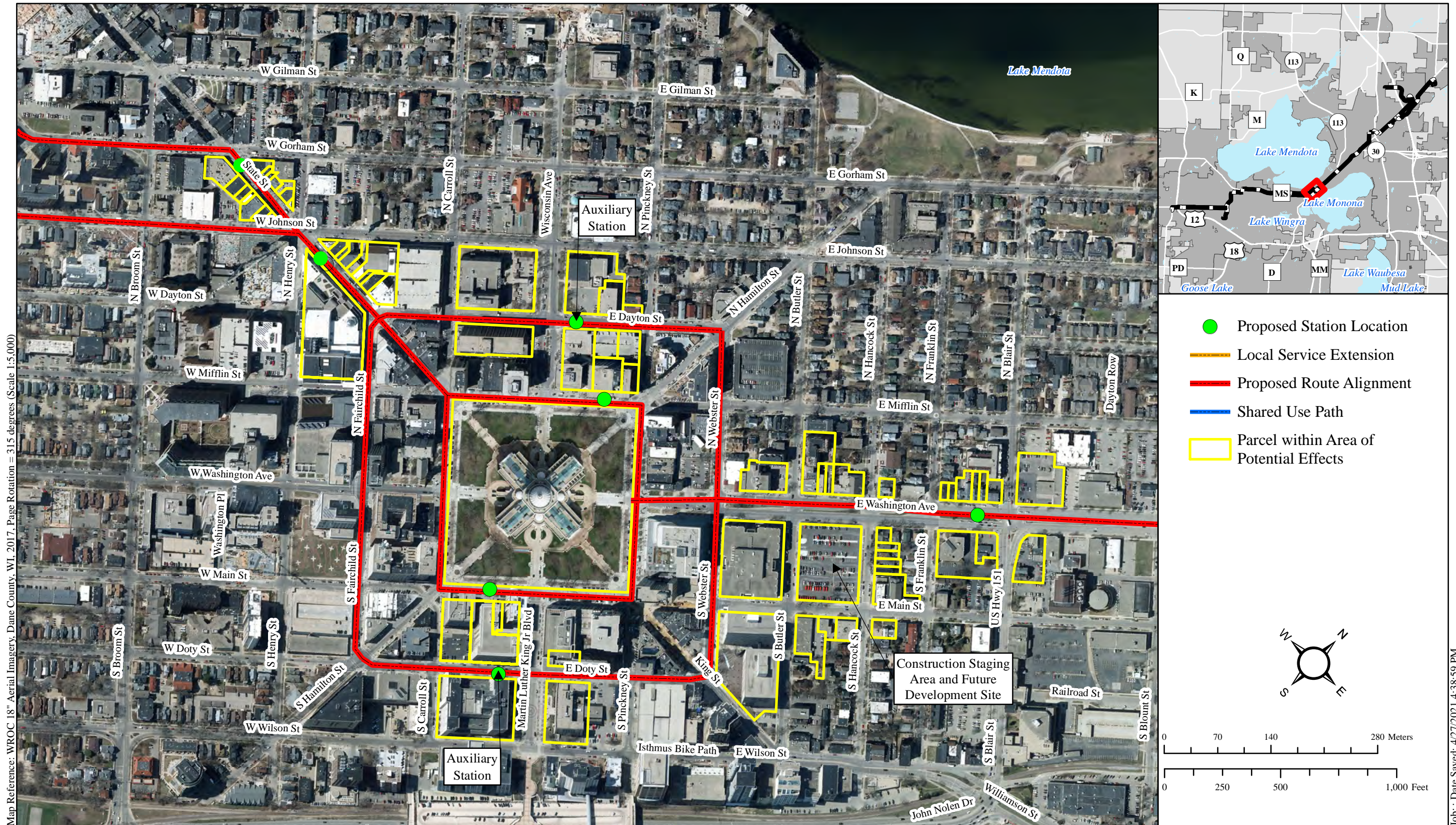
State Street at Gorham Street, View Northeast – Existing
Within State Street Historic District

Madison BRT – Station Renderings



State Street at Gorham Street, View Northeast – Proposed Curbside Station
Within State Street Historic District

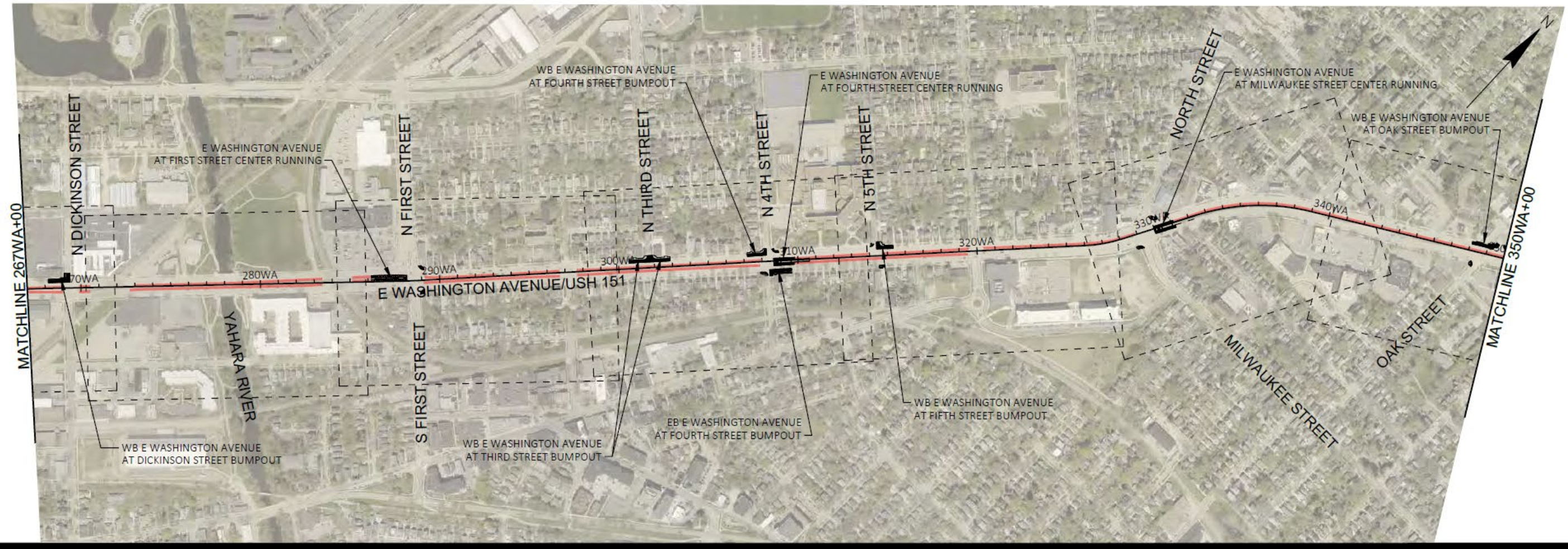
Madison East - West BRT



Map Reference: WROC 18" Aerial Imagery, Dane County, WI, 2017, Page Rotation = 3.15 degrees (Scale 1:5,000)

Job : Date Saved: 4/27/2021 4:38:59 PM

Figure 2j. Proposed Architecture/History APE



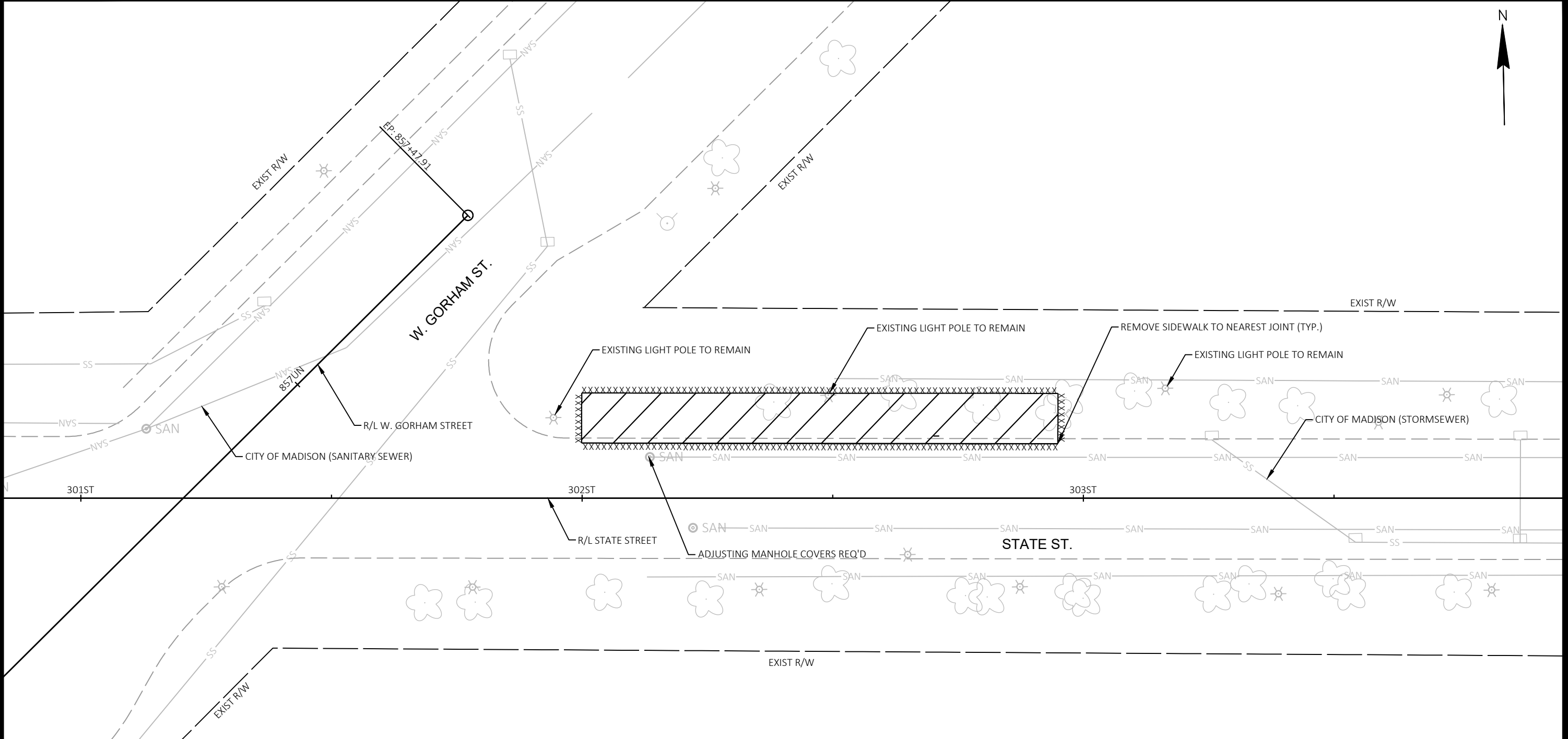
REVISION	DATE	BY

60631225P
 CITY OF MADISON, DANE COUNTY, WI
 CONTRACT NO: 60631225C

PAVEMENT MARKING & PERMANENT SIGNING OVERVIEW
 BUS RAPID TRANSIT
 CITY OF MADISON



60631225P
 M01-E



MARK	REVISION	DATE	BY
60631225P	Designed By: AECOM	Date: 2021-09-03	Scale: 1"=20 FT

60631225P
 REMOVAL PLAN: WB STATE STREET AT JOHNSON STREET
 CITY OF MADISON, DANE COUNTY, WI
 BUS RAPID TRANSIT
CITY OF MADISON
 CONTRACT NO: 60631225C

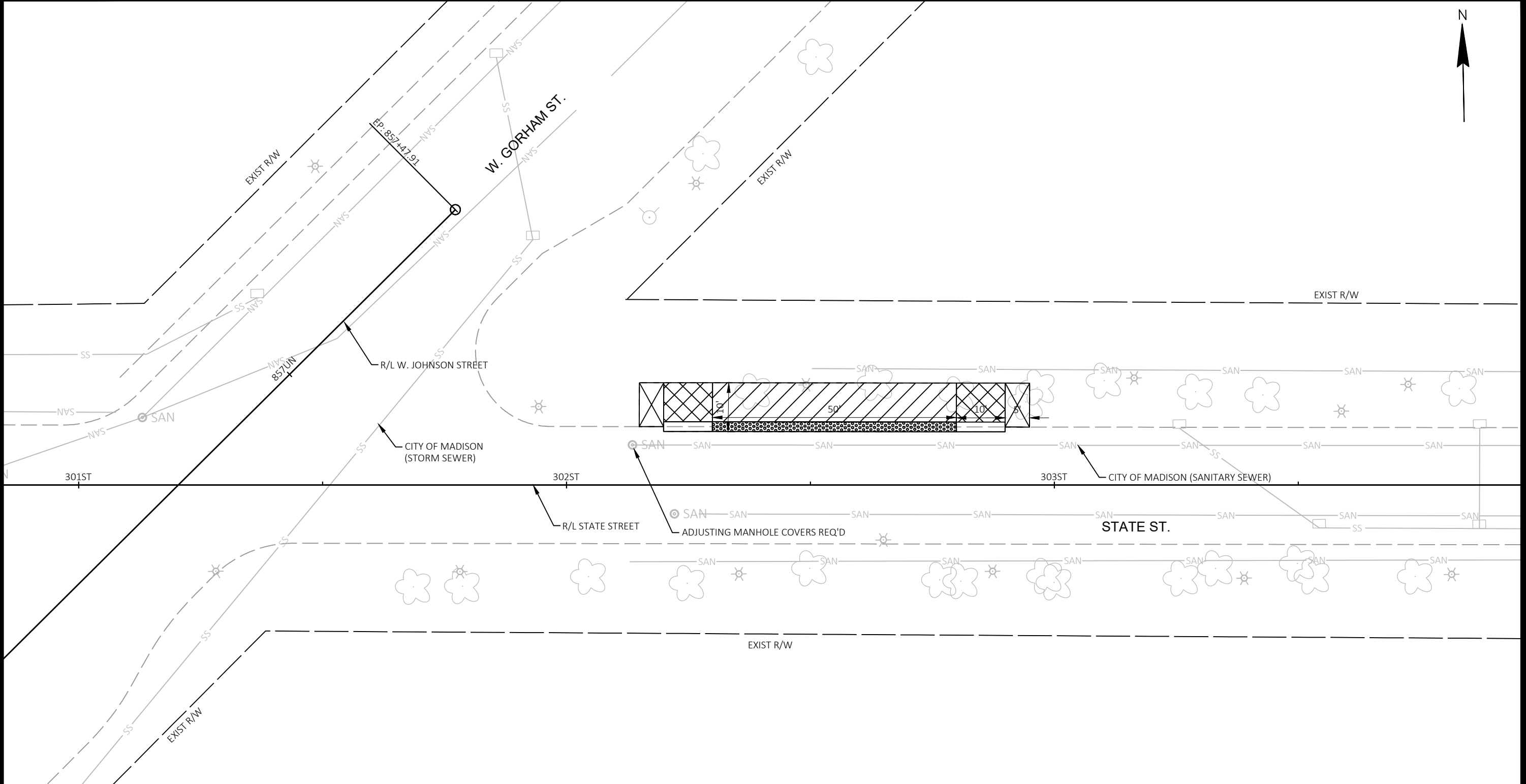
60631225P
R1-E

REMOVALS LEGEND

- REMOVE CONCRETE (ASPHALT PAID AS EXCAVATION CUT)
- REMOVE CONCRETE CURB (PAID AS REMOVE CONCRETE CURB & GUTTER)
- REMOVE CONCRETE CURB & GUTTER
- REMOVE CONCRETE SIDEWALK & DRIVE
- XXXXXXXX SAWCUT PAVEMENT (SEE QUANTITIES FOR ASPHALT/CONCRETE)
(INCIDENTAL TO REMOVE SIDEWALK, CURB, PAVEMENT ITEMS)
- REMOVING TREE (PAID AS CLEARING & GRUBBING)
- INLET PROTECTION, TYPE C- COMPLETE (UNLESS OTHERWISE NOTED)
- REMOVE STREET LIGHT POLE & BASE
- REMOVE TRAFFIC SIGNAL POLE & BASE
- REMOVE ELECTRICAL HAND HOLE
- REMOVING CONDUIT
- REMOVE PIPE
- REMOVE INLET
- REMOVE CATCHBASIN
- REMOVE SEWER ACCESS STRUCTURE (MANHOLE)

*ALL SIGNING REMOVALS FOUND ON THE MARKING AND SIGNING PLANS

Revised Page 255A



MARK	REVISION	DATE	BY
60631225P	2021-09-03		
Designed By: AECOM			Scale: 1"=20 FT

60631225P
 CITY OF MADISON, DANE COUNTY, WI
 CONTRACT NO: 60631225C

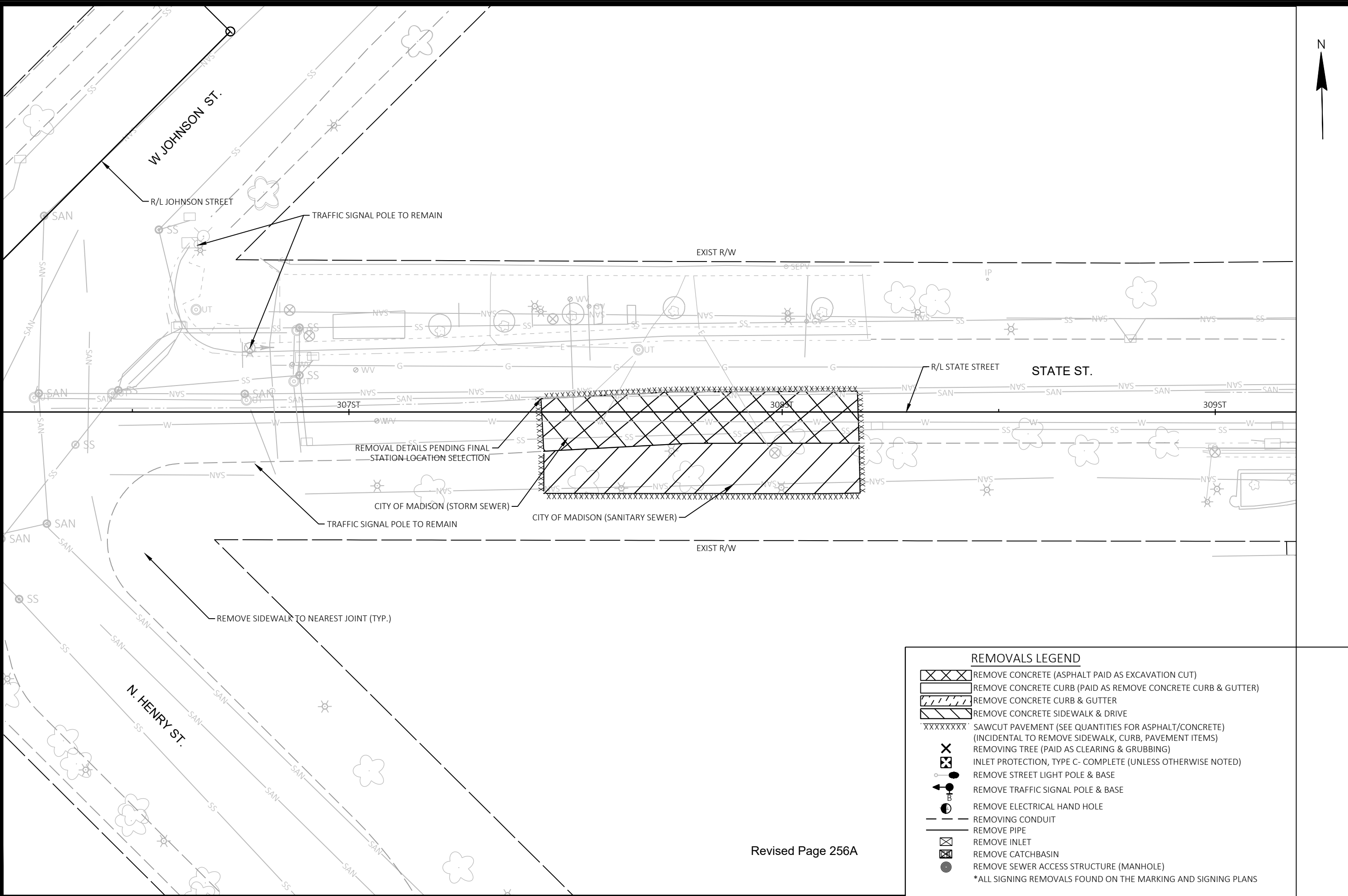
SITE PLAN: WB STATE STREET AT JOHNSON STREET
 BUS RAPID TRANSIT
CITY OF MADISON

60631225P
 P1-E

SITE PLAN LEGEND

- | | | | |
|--|---|--|---|
| | REINFORCED CONCRETE PLATFORM | | 7-INCH CONCRETE SIDEWALK & DRIVE |
| | CONCRETE PLATFORM RAMP | | CONCRETE GUTTER ##-INCH
(PAVED INTEGRAL TO LANE, SEE DETAIL) |
| | X-INCH CONCRETE PAVEMENT | | TYPE XX CONCRETE CURB & GUTTER |
| | 5-INCH CONCRETE SIDEWALK | | CONCRETE CURB PEDESTRIAN |
| | SODDING | | CONCRETE CURB PLATFORM EXTENSION |
| | CURB RAMP DETECTABLE WARNING FIELDS | | CONCRETE STEPS |
| | ADA CLEAR AREA | | BICYCLE RACK CONCRETE-MOUNTED |
| | X-INCH CONCRETE PAVEMENT, COLORED AND STAMPED | | HMA PAVEMENT |
| | LOCAL ROUTE BOARDING AREA | | |

Revised Page 255B



REMOVALS LEGEND

	REMOVE CONCRETE (ASPHALT PAID AS EXCAVATION CUT)
	REMOVE CONCRETE CURB (PAID AS REMOVE CONCRETE CURB & GUTTER)
	REMOVE CONCRETE CURB & GUTTER
	REMOVE CONCRETE SIDEWALK & DRIVE
	SAWCUT PAVEMENT (SEE QUANTITIES FOR ASPHALT/CONCRETE) (INCIDENTAL TO REMOVE SIDEWALK, CURB, PAVEMENT ITEMS)
	REMOVING TREE (PAID AS CLEARING & GRUBBING)
	INLET PROTECTION, TYPE C- COMPLETE (UNLESS OTHERWISE NOTED)
	REMOVE STREET LIGHT POLE & BASE
	REMOVE TRAFFIC SIGNAL POLE & BASE
	REMOVE ELECTRICAL HAND HOLE
	REMOVING CONDUIT
	REMOVE PIPE
	REMOVE INLET
	REMOVE CATCHBASIN
	REMOVE SEWER ACCESS STRUCTURE (MANHOLE)
*ALL SIGNING REMOVALS FOUND ON THE MARKING AND SIGNING PLANS	

Revised Page 256A

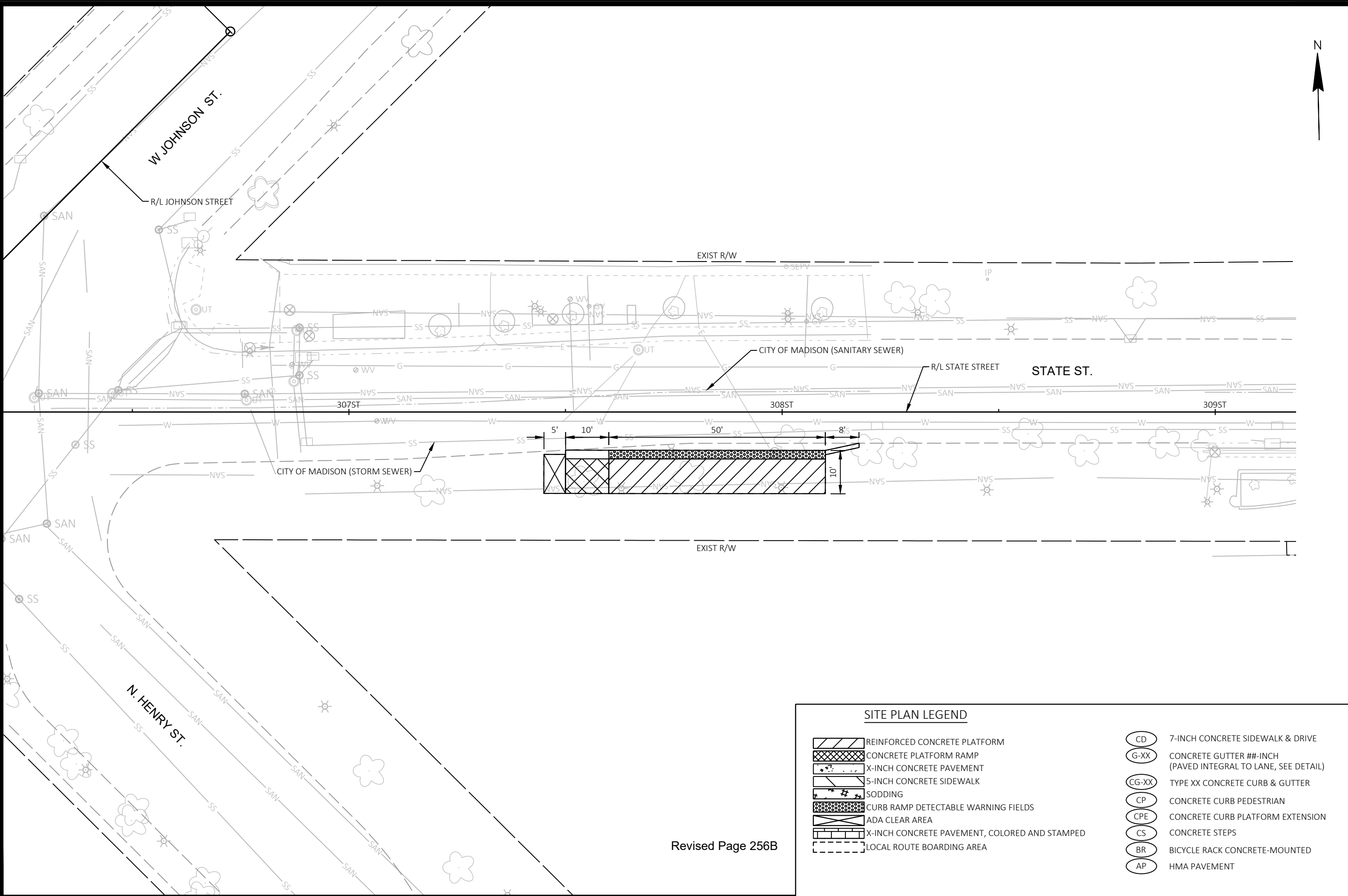
MARK	REVISION	DATE	BY

Designed By: AECOM | Date: 2021-09-03
60631225P Scale: 1"=20 FT

60631225P
 REMOVAL PLAN: EB STATE STREET AT DAYTON STREET
 CITY OF MADISON, DANE COUNTY, WI
 BUS RAPID TRANSIT
CITY OF MADISON
 CONTRACT NO: 60631225C



60631225P
R2-E



MARK	REVISION	DATE	BY

Designed By: AECOM | Date: 2021-09-03
60631225P Scale: 1"=20 FT

60631225P

CITY OF MADISON, DANE COUNTY, WI

CONTRACT NO: 60631225C

SITE PLAN: EB STATE STREET AT DAYTON STREET

BUS RAPID TRANSIT

CITY OF MADISON

60631225P

P2-E

SITE PLAN LEGEND

- | | | | |
|--|---|--|--|
| | REINFORCED CONCRETE PLATFORM | | 7-INCH CONCRETE SIDEWALK & DRIVE |
| | CONCRETE PLATFORM RAMP | | CONCRETE GUTTER ##-INCH (PAVED INTEGRAL TO LANE, SEE DETAIL) |
| | X-INCH CONCRETE PAVEMENT | | TYPE XX CONCRETE CURB & GUTTER |
| | 5-INCH CONCRETE SIDEWALK | | CONCRETE CURB PEDESTRIAN |
| | SODDING | | CONCRETE CURB PLATFORM EXTENSION |
| | CURB RAMP DETECTABLE WARNING FIELDS | | CONCRETE STEPS |
| | ADA CLEAR AREA | | BICYCLE RACK CONCRETE-MOUNTED |
| | X-INCH CONCRETE PAVEMENT, COLORED AND STAMPED | | HMA PAVEMENT |
| | LOCAL ROUTE BOARDING AREA | | |

Revised Page 256B

State Street eligible historic district

