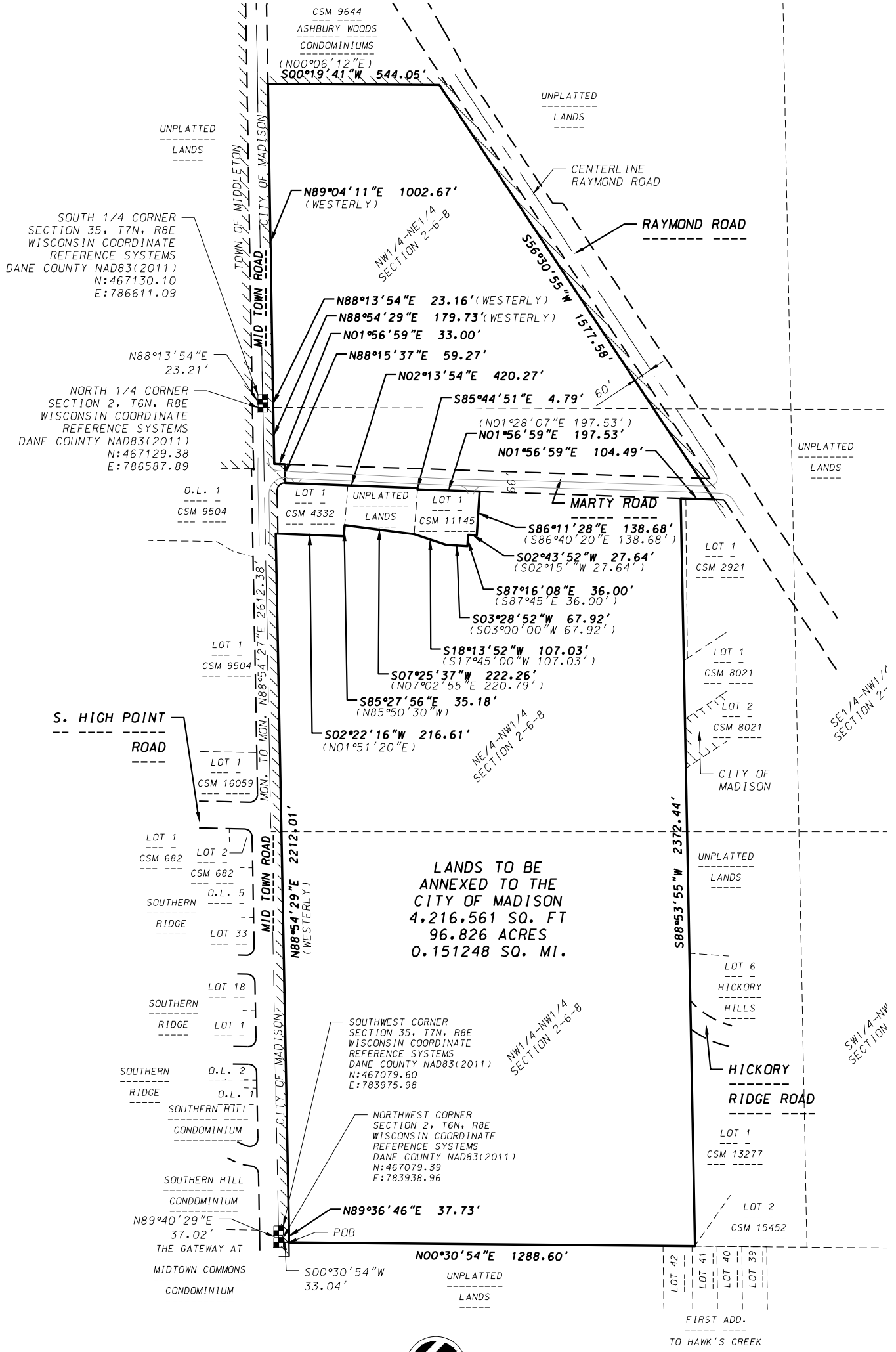


EXHIBIT "B"

LANDS TO BE ANNEXED TO THE CITY OF MADISON

SCALE MAP



LANDS TO BE
ANNEXED TO THE
CITY OF MADISON
4,216,561 SQ. FT
96.826 ACRES
0.151248 SQ. MI.



GRID NORTH
WISCONSIN COUNTY COORDINATE
SYSTEM (DANE ZONE)
THE SOUTH LINE OF THE SW1/4
OF SECTION 35, T7N, R8E
BEARS S88°54'29\"W
0 400
Scale 1" = 400'

LEGEND
() RECORDED AS INFORMATION
--- EXISTING CORPORATE LIMITS
OF THE CITY OF MADISON

DATE: October 10, 2023
F.N.: 23-07-109

D'ONOFRIO KOTTKE AND ASSOCIATES, INC.
7530 Westward Way, Madison, WI 53717
Phone: 608.833.7530 • Fax: 608.833.1089
YOUR NATURAL RESOURCE FOR LAND DEVELOPMENT