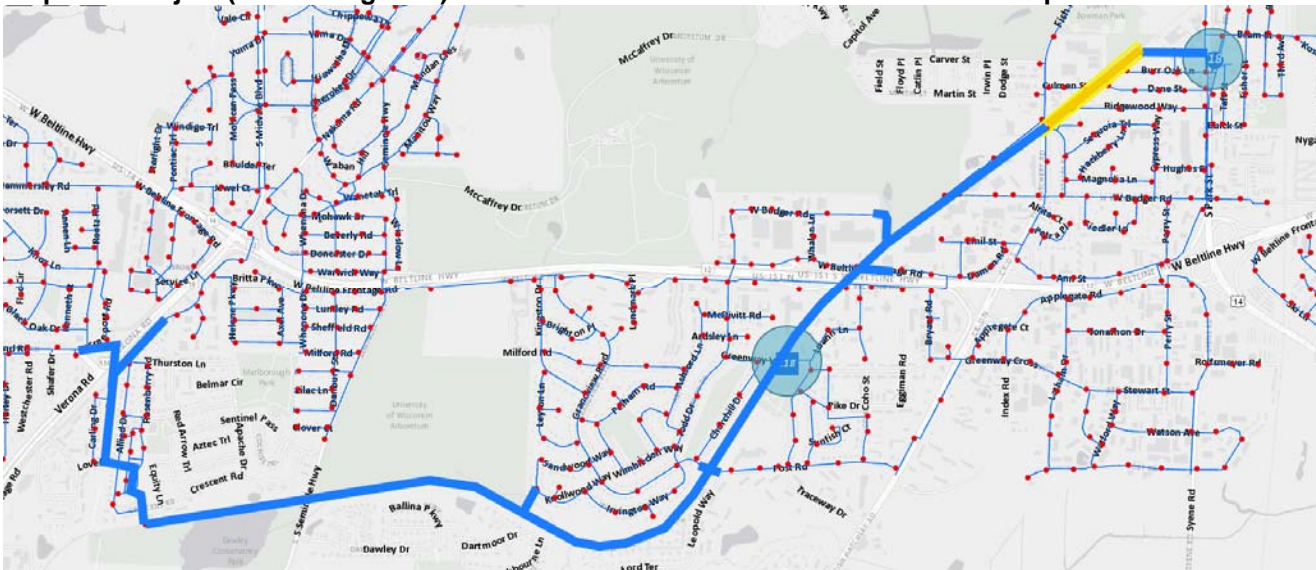


Project Limits & Location Map (City of Madison Alder District 14, Town of Madison, WisDOT Railway):



Proposed Project (Yellow Segment) in Relation to Entire Cannonball Water Main Pipeline:



Project Scope: Proposed installation of approximately 2,400-FT of new 12-IN water main along the WisDOT railroad corridor located between Fish Hatchery Rd and North Ave in the City of Madison and Town of Madison. This is the final phase of a 5-mile transmission line and pump station project which connects Unit Well 18 to Pressure Zone 7 in order to improve system hydraulics, redundancy and fire flow capacity along this transmission corridor.

Project Engineer: Adam Wiederhoeft, PE – awiederhoeft@madisonwater.org – 608-266-9121

Project Account Information: 10435-86-179

Estimated Cost: \$640,000, not assessable.

Anticipated Schedule: 1st Ad: 6/2/17, Start Construction: 8/7/17, Estimated Completion Date: 10/31/17