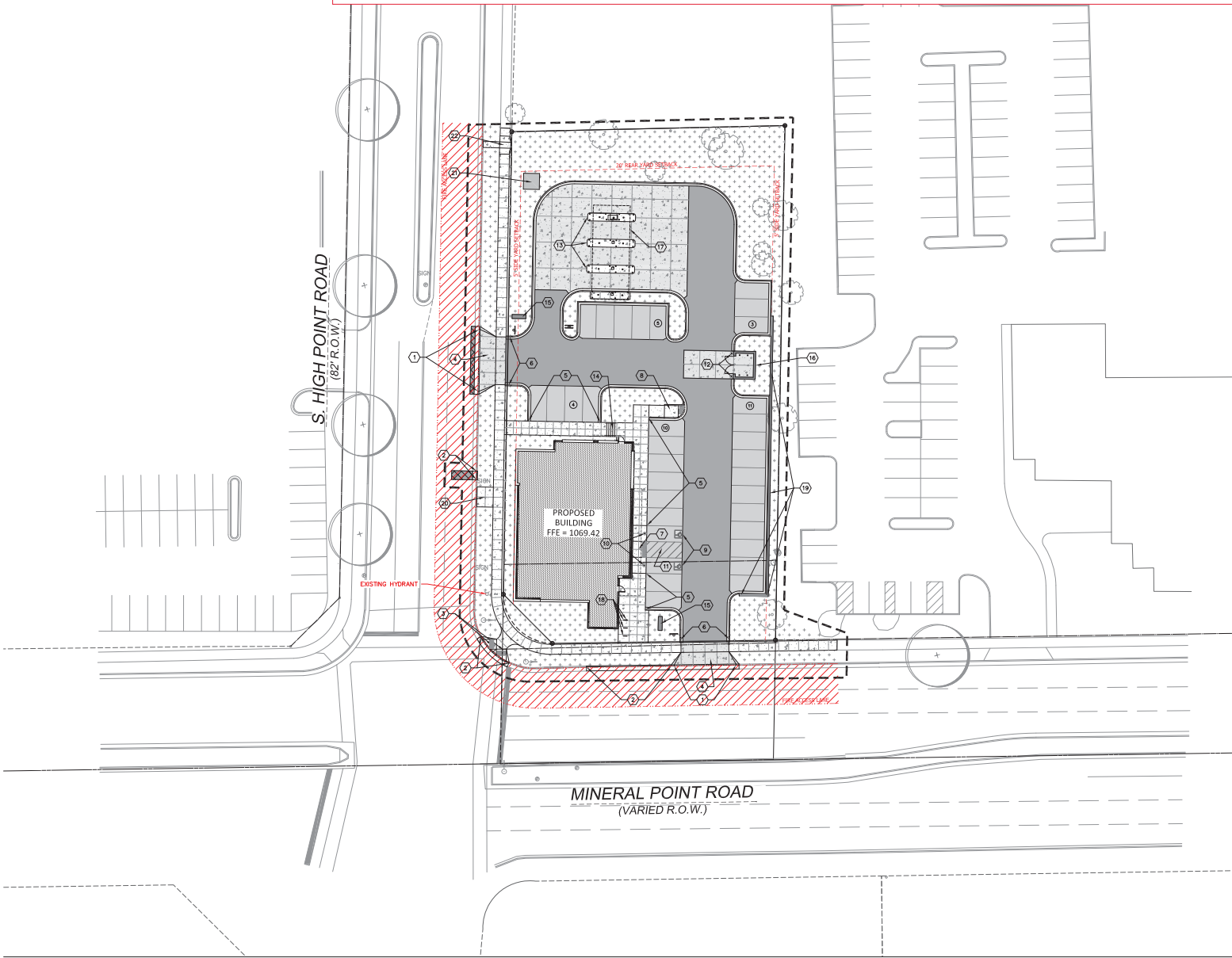


7718 Mineral Point Road Improvements (contract 8925)

- new 5-foot wide public sidewalk on Mineral Point Road and S Highpoint Road
- new private commercial driveway openings and aprons
- private sanitary and water service laterals (service from S Highpoint Road)
- private storm discharge by flume to S Highpoint Road if stormwater management plan to match peak runoff rates and volumes is approved
- storm sewer (public in S Highpoint Road or private in easement) will be required if stormwater management plan is not approved for discharge direct to S Highpoint Road.
- street and terrace restoration as dictated by other improvement requirements
- street tree protection, removals, and replacement as determined by City Forestry



Scale: 1" = 20'

DIGGERSHOTLINE
 Dial 811 or (800)242-8511
 www.DiggersHotline.com

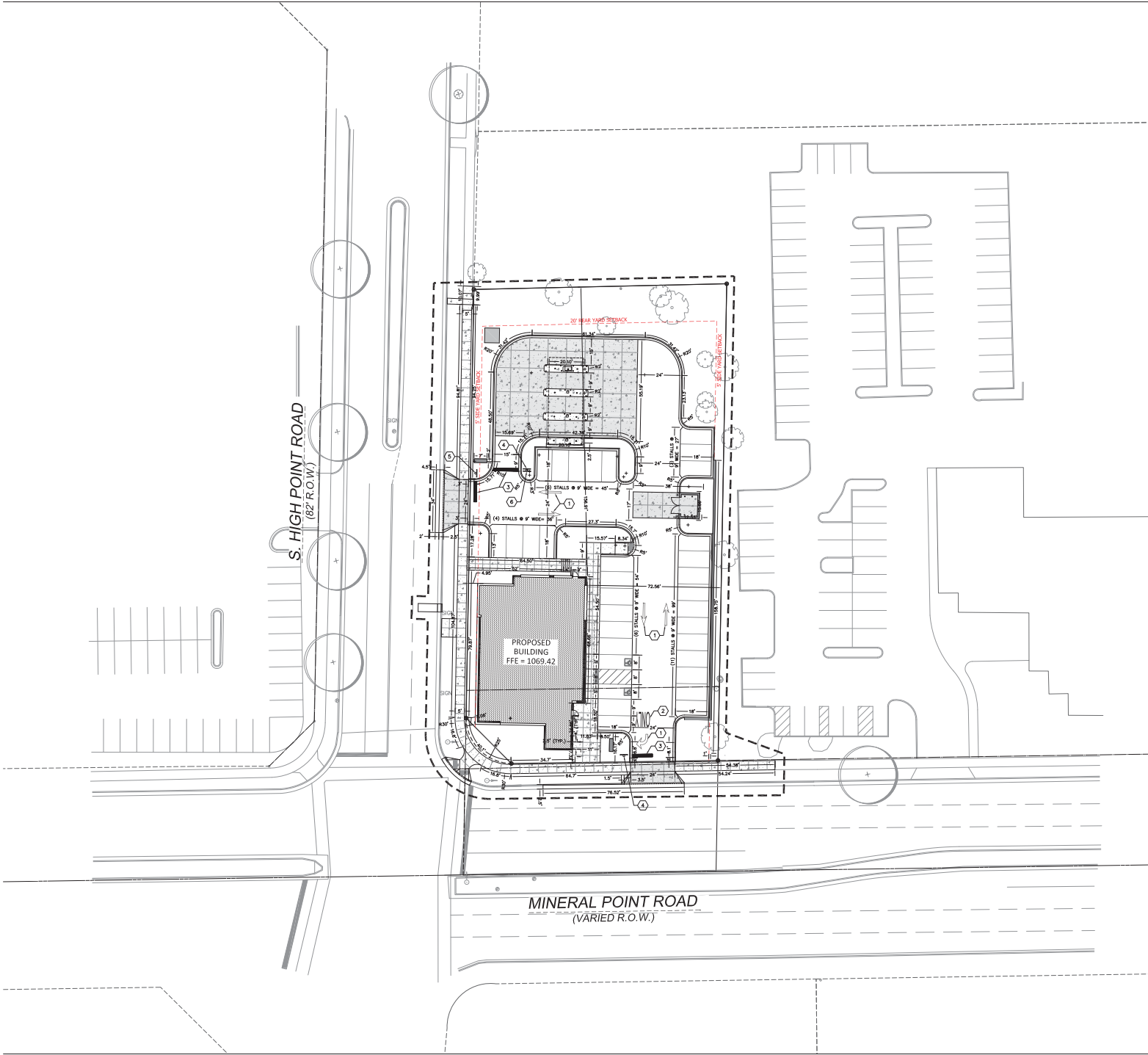
KEY INDEX

PROJECT LIMITS	DESCRIPTION
(Symbol: Dashed line)	AREAS DEMARCATED BY CONSTRUCTION (NOT SPECIFICALLY CALLED OUT ON THE LANDSCAPE PLANS) TO BE RECEIVED WITH MINIMUM 4" TOPSOIL, SEED, FERTILIZER, AND MULCH (TYP). USE SHAWMED TOPSOIL OR IMPORT TOPSOIL IF REQUIRED.
(Symbol: Light gray hatched)	NEW ASPHALTIC CONCRETE (LIGHT DUTY)
(Symbol: Dark gray hatched)	NEW ASPHALTIC CONCRETE (HEAVY DUTY)
(Symbol: Cross-hatched)	NEW ASPHALTIC CONCRETE TO MATCH EXISTING SECTION IN HIGH POINT ROAD. INSTALLATION CITY OF MADISON SPECIFICATIONS AND DETAILS
(Symbol: White with black outline)	NEW CONCRETE SLAB
(Symbol: Dotted pattern)	NEW HEAVY DUTY CONCRETE SLAB
(Symbol: Vertical lines)	HIGH-SIDE CONCRETE CURB & GUTTER 18" BARRIER UNLESS OTHERWISE NOTED
(Symbol: Horizontal lines)	LOW-SIDE CONCRETE CURB & GUTTER 18" BARRIER UNLESS OTHERWISE NOTED
(Symbol: Dashed line with dots)	EXPRESSED CONCRETE CURB & GUTTER 18" BARRIER UNLESS OTHERWISE NOTED
(Symbol: Circle with 'A')	NEW CITY OF MADISON DRIVEWAY SECTION TYPE "A" CONCRETE CURB & GUTTER
(Symbol: Circle with '2')	NEW CITY OF MADISON SECTION TYPE "A" CONCRETE CURB & GUTTER
(Symbol: Circle with '3')	NEW CITY OF MADISON CURB RAMP TYPE 2
(Symbol: Circle with '4')	NEW CITY OF MADISON STANDARD COMMERCIAL DRIVE APRON
(Symbol: Circle with '5')	NEW CONCRETE INTEGRAL CURB & SIDEWALK
(Symbol: Circle with '6')	2' TRANSITION FROM 18" BARRIER CURB & GUTTER TO 20" CURB
(Symbol: Circle with '7')	NEW ACCESSIBILITY RAMP WITH TRUNCATED DOME DETECTABLE WARNING FIELDS
(Symbol: Circle with '8')	NEW ACCESSIBILITY RAMP WITH TRUNCATED DOME DETECTABLE WARNING FIELDS
(Symbol: Circle with '9')	NEW ACCESSIBLE PARKING SYMBOL
(Symbol: Circle with '10')	NEW 4" STEEL BOLLARD WITH PLASTIC COVER AND ACCESSIBLE SIGNS
(Symbol: Circle with '11')	NEW 4" WHITE PAINT 30' DIA. FOR CHANGELANE
(Symbol: Circle with '12')	NEW 4" DIAMETER STEEL BOLLARD
(Symbol: Circle with '13')	NEW CONCRETE DRIVE ISLAND. REFER TO ARCHITECTURAL PLANS FOR MORE INFORMATION
(Symbol: Circle with '14')	NEW CONCRETE STAR WITH HANDRAIL. DIMENSIONS TO BEAS APPLICABLE AND CONNECT TO BUILDING
(Symbol: Circle with '15')	NEW SIGNMENT SIGN. REFER TO ARCHITECTURAL PLANS FOR MORE INFORMATION
(Symbol: Circle with '16')	NEW TRASH ENCLOSURE. REFER TO ARCHITECTURAL PLANS FOR MORE INFORMATION
(Symbol: Circle with '17')	NEW WIRE TIE CHAIRS AND WIRE TIE EQUIPMENT. REFER TO ARCHITECTURAL PLANS FOR MORE INFORMATION
(Symbol: Circle with '18')	TO NEW "MASONRY" LIGHT USE PHASE OR EQUIVALENT. INSTALL PER MANUFACTURER SPECIFICATIONS AND DETAILS.
(Symbol: Circle with '19')	NEW VARIABLE HEIGHT "SYSTEME COMPACT" OR EQUIVALENT MODULAR BLOCK RETAINING WALL WITH 4" THICK CAP. INSTALL PER MANUFACTURER SPECIFICATIONS AND DETAILS. PROVIDE STRUCTURAL SLIP DIMENSIONS FOR REVIEW PRIOR TO INSTALLATION
(Symbol: Circle with '20')	NEW CONCRETE PAD FOR METRO TRANSIT. INSTALL PER CITY OF MADISON STANDARDS AND SPECIFICATIONS
(Symbol: Circle with '21')	NEW TRANSFORMER. REFER TO SITE ELECTRICAL PLAN FOR MORE INFORMATION. INSTALL AND PER MANUFACTURER SPECIFICATIONS
(Symbol: Circle with '22')	NEW SIDEWALK AND TERRACE FLUME PER CITY OF MADISON RELEASE 2.3.2 AND S.A.S. FLUME ELEVATION ON SITE TO BE SLAB. REFER TO SHADING PLANS FOR MORE INFORMATION.

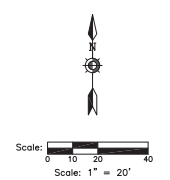
Revisions
 1 CONSTRUCTION BULLETIN 5/22/2020

SCOPE
 CONSTRUCTION
 DOCUMENTS
 ASSOCIATED BANK
 CC 80148 MADISON

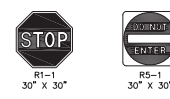
7722 MINERAL POINT ROAD
 MADISON, WI 53717
 Date Issued: 5/8/20
 RINKA project #: 80148
 Sheet Title
 SITE LAYOUT PLAN



△ Revisions
 1 CONSTRUCTION BULLETIN 5/22/20



DIGGERS HOTLINE
 Dial 811 or (800)242-8511
 www.DiggersHotline.com



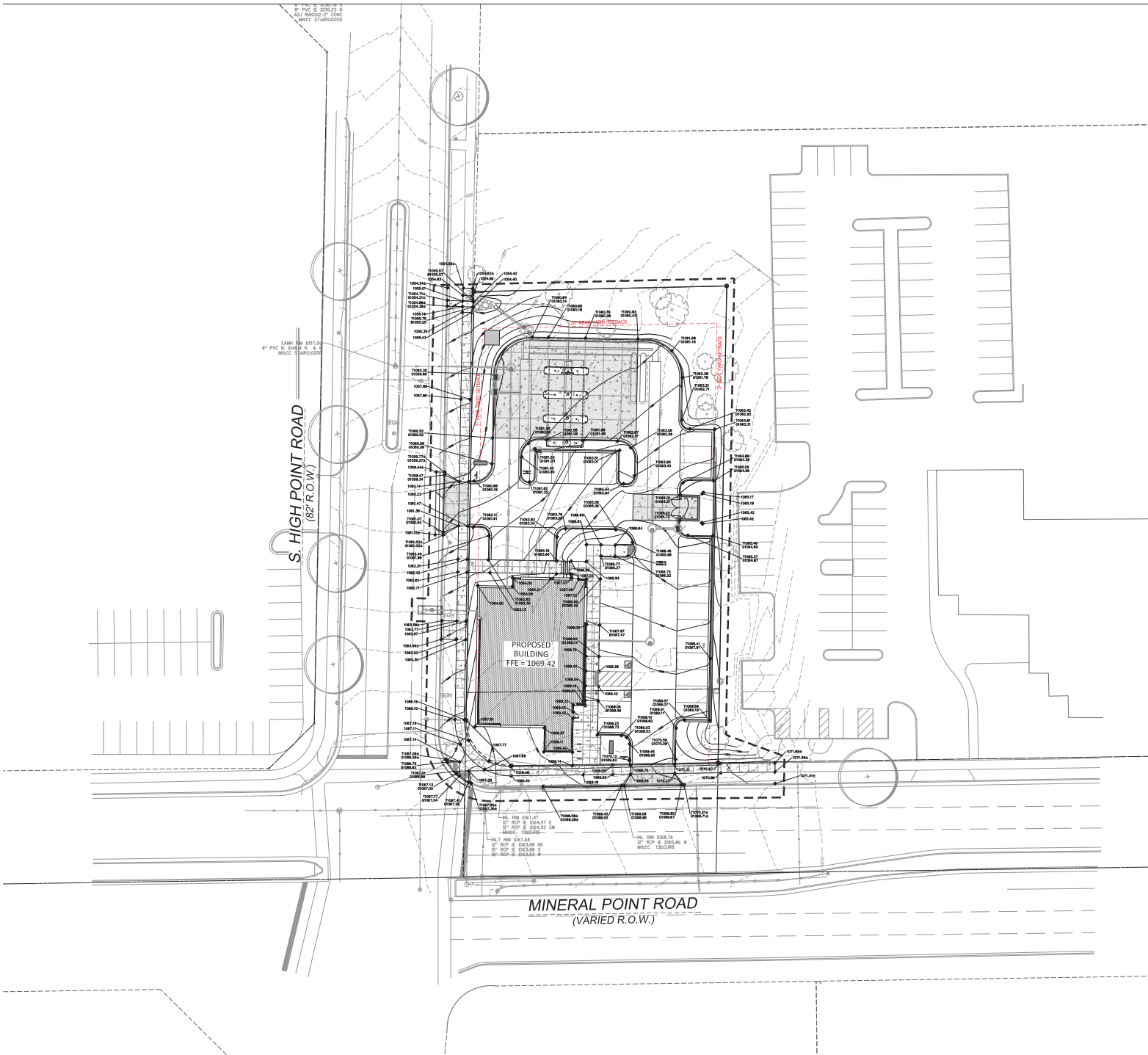
KEY INDEX

①	PAVEMENT MARKING ARROWS, LATEX PAVEMENT MARKING PAINT, WHITE (SEE ROOT PAVEMENT MARKING S.O.D.)	
②	PAVEMENT MARKING WORDS, LATEX PAVEMENT MARKING PAINT, WHITE (SEE ROOT PAVEMENT MARKING S.O.D.)	
③	PAVEMENT MARKING STOP LINE, LATEX PAVEMENT MARKING PAINT, WHITE (SEE ROOT PAVEMENT MARKING S.O.D.)	
④	"30" SIGN, R1-1 30" X 30" FACING NORTH	
⑤	"30" SIGN, R5-1 30" X 30" FACING EAST	
⑥	"DO NOT ENTER" SIGN, R5-2 30" X 30" FACING SOUTH	

SCOPE
 CONSTRUCTION
 DOCUMENTS
 ASSOCIATED BANK
 CC 80148 MADISON

7722 MINERAL POINT ROAD
 MADISON, WI 53717
 Date Issued: 5/8/20
 RINKA project #: 80148
 Sheet Title
**SITE GEOMETRIC &
 TRAFFIC CONTROL
 PLAN**

Sheet # **C103**



8" P/C E 3056.25 N
 ALL RINGS 2" CONC
 MNECC STAIRS/GOOD

8" P/C E 3048 N A E
 ALL RINGS 2" CONC
 MNECC STAIRS/GOOD

S. HIGH POINT ROAD
 (82' R.O.W.)

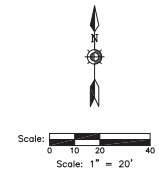
PROPOSED BUILDING
 GFA = 1069.42

MINERAL POINT ROAD
 (VARIED R.O.W.)

ALL DIM 304.14' E
 2" RCP E 304.91' E
 2" RCP E 304.92' E
 MNECC CONC/GRASS

ALL DIM 304.78' E
 2" RCP E 304.98' NE
 2" RCP E 304.98' S
 MNECC CONC/GRASS

ALL DIM 304.76' E
 2" RCP E 304.96' W
 MNECC CONC/GRASS



DIGGERS HOTLINE
 Dial 811 or (800)242-8511
 www.DiggersHotline.com

KEY INDEX

---	EXISTING CONTOUR MINOR
---	EXISTING CONTOUR MAJOR
---	PROPOSED CONTOUR MINOR
---	PROPOSED CONTOUR MAJOR
◆	PROPOSED SPOT GRADE
◆	MATCH EXISTING GRADE
◆	PROPOSED TOP OF CURB
◆	PROPOSED BOTTOM OF CURB
◆	MATCH EXISTING TOP OF CURB
◆	MATCH EXISTING BOTTOM OF CURB
◆	PROPOSED TOP OF WALL
◆	PROPOSED BOTTOM OF WALL
◆	MATCH EXISTING TOP OF WALL
◆	MATCH EXISTING BOTTOM OF WALL
→	DRAINAGE SWALE

△ Revisions
 1 CONSTRUCTION BULLETIN 01 5/20/20

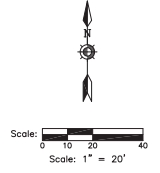
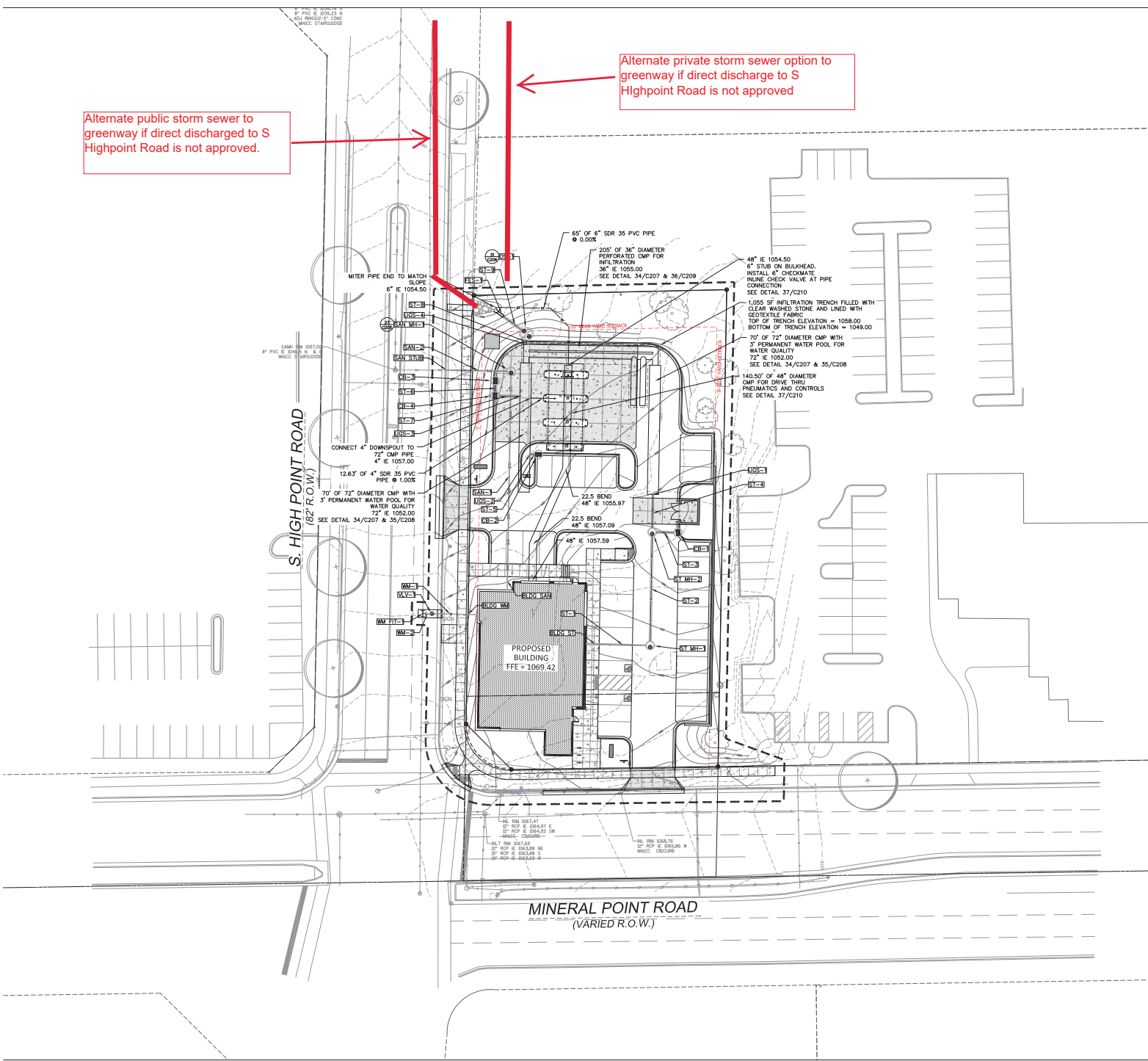
SCOPE
 CONSTRUCTION
 DOCUMENTS
 ASSOCIATED BANK
 CC 80148 MADISON

7722 MINERAL POINT ROAD
 MADISON, WI 53717
 Date Issued: 5/8/20
 RINKA project #: 80148
 Sheet Title
**SITE GRADING
 PLAN**

Sheet # **C104**

Alternate public storm sewer to greenway if direct discharged to S Highpoint Road is not approved.

Alternate private storm sewer option to greenway if direct discharge to S Highpoint Road is not approved



DIGGERS HOTLINE
 Dial 811 or (800)242-8511
 www.DiggersHotline.com

- UTILITY NOTES**
- PROJECT LIMITS
- CAUTION
- PROBABLE UTILITY AND POTENTIAL CONFLICT EXIST WITH EXISTING UNDERGROUND UTILITIES. PRIOR TO UTILITY INSTALLATION, CONTRACTOR TO LOCATE AND FORCE MAIN CONTACT ENGINEER FOR LOCATIONS, DEPT. RECORDS, AND CONTACT CONTRACTOR AND EXISTING UNDERGROUND UTILITIES.
- FOR PROJECT INFORMATION AND TO ESTABLISH PROCEEDINGS FOR TRENCHING AND WATER CONSTRUCTION IN WISCONSIN, THE POINT OF COMMENCEMENT FOR THE LAYOUT OF ANY PIPE SHALL BE AT THE LOWEST POINT IN THE PROPOSED CENTER LINE. THE PIPE SHALL BE Laid WITH THE END OF THE BELL AND GASKET PIPE OR WITH THE DESIGNER'S CHOICE OF THE TOGGLE AND SHOULDER PIPE JOINTING SYSTEM. WHEN A HIGH SEWER IS TO BE CONNECTED TO AN EXISTING SEWER NOT TERMINATING IN A MANHOLE, THE CONTRACTOR SHALL VERIFY THE EXISTING SEWER TO ALLOW ANY ADJUSTMENTS IN LINE AND GRADE TO BE MADE BEFORE PIPE IS Laid.
 - THE UNDERGROUND AND SURFACE UTILITY INFORMATION AS SHOWN HEREON IS BASED IN PART, UPON INFORMATION FURNISHED BY UTILITY COMPANIES, LOCAL MUNICIPALITY, PROPERTY OWNERS, AND OTHERS NOTING. WHILE THIS INFORMATION IS BELIEVED TO BE RELIABLE, ITS ACCURACY AND COMPLETENESS CANNOT BE GUARANTEED NOR CERTIFIED TO.
 - GENERAL CONTRACTOR OR THEIR SUB CONTRACTORS SHALL APPLY FOR AND OBTAIN ALL THEIR REQUIRED PERMITS AND APPROVALS PRIOR TO THE START OF THEIR WORK. CONSULT WITH AND OBTAIN FROM ENGINEER COPIES OF APPLICATING ENGINE APPROVAL PERMITS, INCLUDING BUT NOT LIMITED TO: BANK, STATE OR LOCAL PLUMBING, WELD, COUNTY, AND STORM WATER MANAGEMENT.
 - GENERAL CONTRACTOR OR THEIR SUB CONTRACTORS SHALL CONTACT ENGINEER AS SOON AS THEY SUSPECT THEY TO LOCATE EXISTING UTILITIES.
 - GENERAL CONTRACTOR OR THEIR SUB CONTRACTORS ARE RESPONSIBLE FOR COORDINATING THEIR WORK WITH ALL OTHER CONTRACTORS.
 - GENERAL CONTRACTOR OR THEIR SUB CONTRACTORS ARE RESPONSIBLE FOR VERIFYING OWNERSHIP OF AND COORDINATING THE RESOLUTION AND/OR RELIANCE OF ALL EXISTING UTILITIES FROM EXISTING RECORDS AND WITHIN THE PROJECT LIMITS, INCLUDING BUT NOT LIMITED TO ELECTRICAL, FIBER OPTIC, TELEPHONE, CABLE, WATER, SANITARY, OTHER. VERIFICATION OF THIS UTILITY WORK MUST BE IN ACCORDANCE WITH ALL STATE, FEDERAL, & LOCAL REGULATIONS.
 - FOR ALL WORK, GENERAL CONTRACTOR OR THEIR SUB CONTRACTORS ARE RESPONSIBLE FOR REVIEWING ALL DOCUMENTS, VERIFYING THE VERTICAL AND HORIZONTAL LOCATION AND DEPTH OF ALL UTILITIES, INCLUDING BUT NOT LIMITED TO ELECTRICAL, FIBER OPTIC, TELEPHONE, CABLE, WATER, SANITARY, OTHER. VERIFICATION OF THIS UTILITY WORK MUST BE IN ACCORDANCE WITH ALL STATE, FEDERAL, & LOCAL REGULATIONS.

KEY INDEX

PROJECT LIMITS	STORM/SANITARY MANHOLE	STORM CATCH BASIN WITH CURB BOX FRAME & GRATE	ROP APRON ENDWALL	RSP RAMP	WATER MAIN TEE	WATER MAIN VALVE	STORM SEWER	SANITARY SEWER	WATER MAIN
(Symbol)	(Symbol)	(Symbol)	(Symbol)	(Symbol)	(Symbol)	(Symbol)	(Symbol)	(Symbol)	(Symbol)

RINKA+
 722 North Milwaukee Street, Suite 200
 Milwaukee, Wisconsin 53202
 P 414.471.0101

Associated Bank

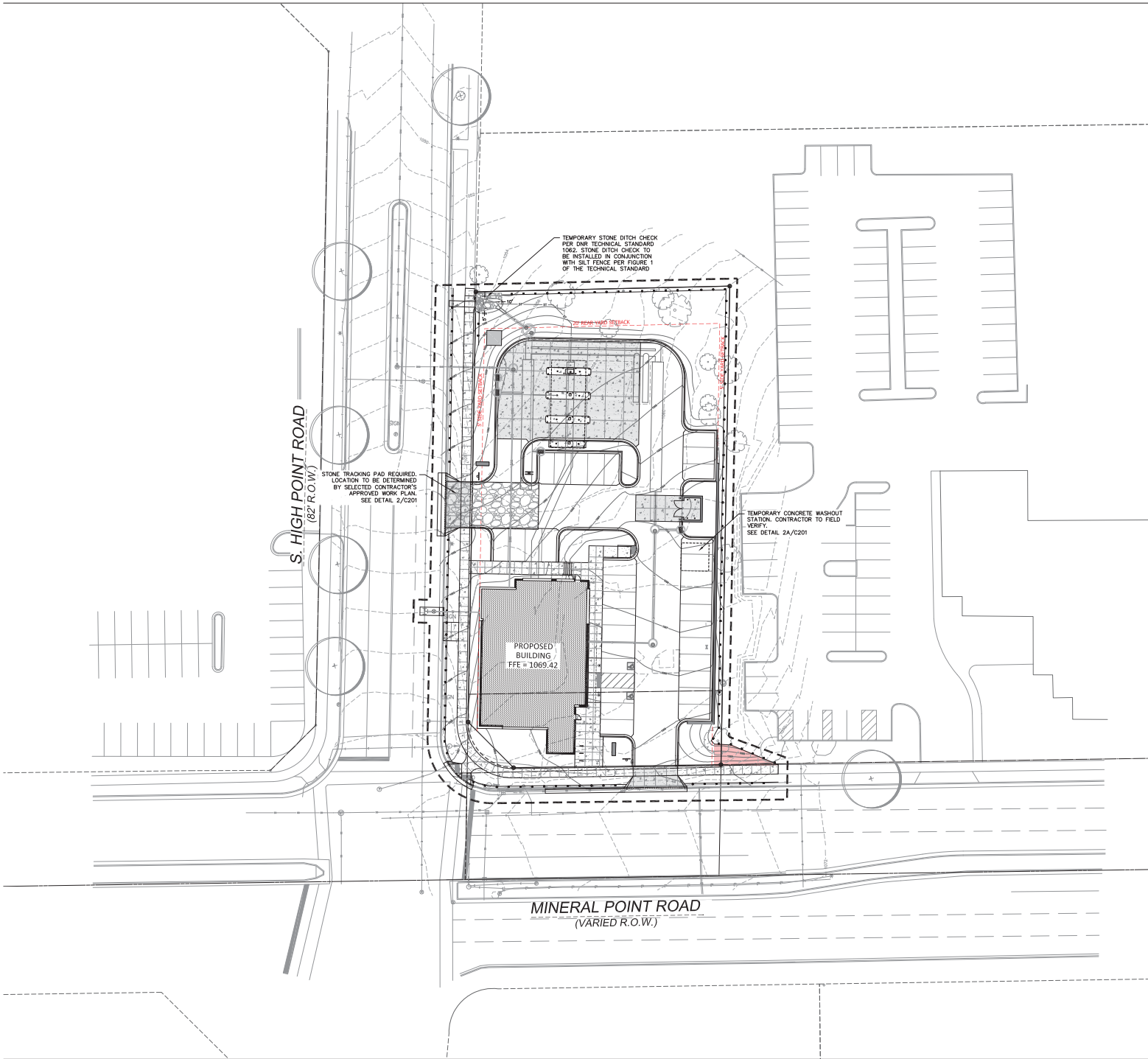
kapur
 7711 N. Port Washington Road
 Milwaukee, Wisconsin 53217
 kapurinc.com

Revisions
 1 CONSTRUCTION BULLETIN # 522020

SCOPE
 CONSTRUCTION
 DOCUMENTS
 ASSOCIATED BANK
 CC 80148 MADISON

7722 MINERAL POINT ROAD
 MADISON, WI 53717
 Date Issued: 5/8/20
 RINKA project #: 80148
 Site Title
 SITE UTILITY PLAN

Sheet #
C105A



Scale: 0 10 20 40
Scale: 1" = 20'

DIGGERS HOTLINE
Dial 811 or (800)242-8511
www.DiggersHotline.com

EROSION NOTES
INSPECT ALL EROSION CONTROL MEASURES PRIOR TO COMMENCING GRADING, EXCAVATION OR OTHER LAND DISTURBING ACTIVITIES. EROSION CONTROL MEASURES MUST BE INSPECTED WEEKLY AND WITHIN 24 HOURS OF EVERY PRECIPITATION EVENT OF 0.50 INCH OR GREATER. IN ADDITION, THE CONTRACTOR SHALL CONDUCT DAILY INSPECTIONS AND DOCUMENT CONDITIONS AND REPAIRS MADE. RECORDS MUST BE MAINTAINED AND KEPT ON THE CONSTRUCTION SITE. A DAILY LOG BOOK, THE SHEET LOG BOOK, WEATHER LOG AND PRECIPITATION REPORTS, APPROVED PLANS AND SPECIAL PERMITS SHALL BE KEPT IN AN ACCESSIBLE LOCATION AND A BARRIAGE, WITHIN THE STAGING AREA.
AT ABSOLUTELY NO TIME MAY CONSTRUCTION EQUIPMENT, DEBRIS, FILL, ETC. BE PLACED WITHIN WETLANDS, WATERSHEDS OR FLOOD PLAINS UNLESS IDENTIFIED IN THE PLANS.

POINTS OF CONTACT

LAND OWNER:
DAVID HENRIK - SENIOR VICE PRESIDENT
ASSOCIATED BANK
85 EAST FLORISS AVENUE
MILWAUKEE, WI 53202
PHONE: 414-330-7344

PROJECT ENGINEER:
RYAN B. BRONKHORST, P.E.
RYAN B. ASSOCIATES, P.C.
1275 WALKER STREET
MILWAUKEE, WI 53207
PHONE: 414-781-7700

CONSTRUCTION MANAGER:
BRAD OLSON - SENIOR PROJECT MANAGER
L&L ENGINEERING & CONSTRUCTION, INC.
1275 WALKER STREET
MILWAUKEE, WI 53207
PHONE: 414-330-7700

KEY INDEX

INDICATES EROSION MAT ON ALL SLOPES GREATER THAN 4:1 AND ALL DRAINAGE SWALES

USE CLASS 1 TYPE A FROM MIDDOT PRODUCTS APPROVED LIST FOR ALL SIDE SLOPES

USE CLASS 4 TYPE B FOR ALL DRAINAGE SWALES, INITIAL EROSION MAT ON THE SLOPE

USE CLASS 4 TYPE B FOR ALL DRAINAGE SWALES, INITIAL EROSION MAT ON THE SLOPE

VERTICALLY UP THE SIDE SLOPES OF ALL DRAINAGE SWALES CLASS 1 TYPE A MAT BE USED FOR THE REMEDIATION OF THE SIDE SLOPES IN DRAINAGE SWALES EXCEEDING 2 FEET VERTICALLY.

— FILTER FABRIC FENCE

DESIGNATES PROPOSED ALLEYS THAT MUST BE PROTECTED AFTER THEY HAVE BEEN CONSTRUCTED.

DESIGNATES EXISTING ALLEYS THAT MUST BE PROTECTED.

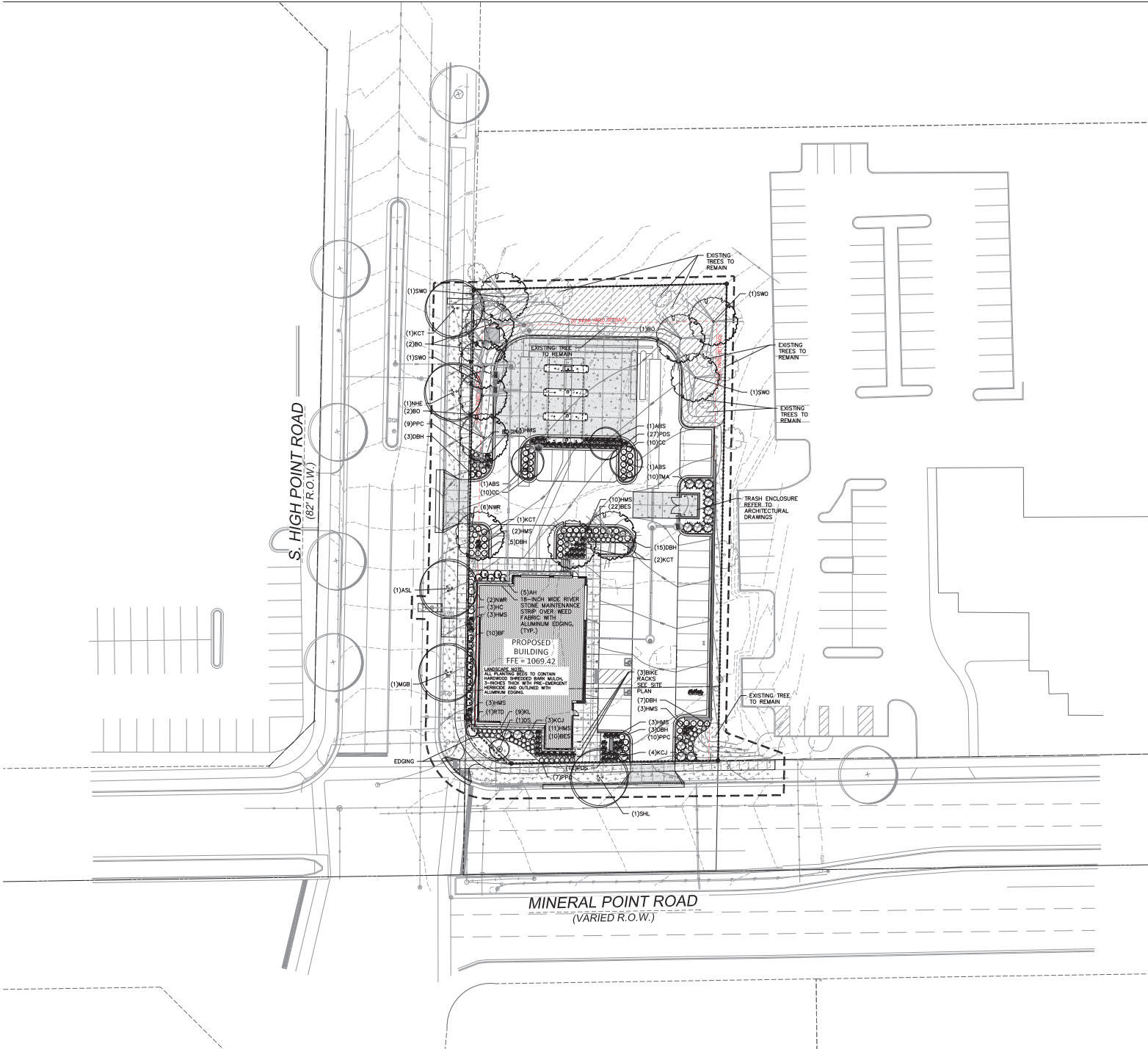
△ Revisions
1 CONSTRUCTION BULLETIN 02/20/20

SCOPE
CONSTRUCTION
DOCUMENTS
ASSOCIATED BANK
CC 80148 MADISON

7722 MINERAL POINT ROAD
MADISON, WI 53717
Date Issued: 5/8/20
RINKA project #: 80148
Sheet Title:

**SITE EROSION
CONTROL PLAN**

Sheet # **C106**



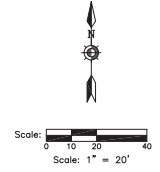
S. HIGH POINT ROAD
(62' R.O.W.)

MINERAL POINT ROAD
(VARIED R.O.W.)

PROPOSED BUILDING
GFA = 1069.42

LANDSCAPE NOTE:
ALL PLANTING BEDS TO CONTAIN
HANDPOURED SERRATED BARK MULCH
STRIP OVER NEED FABRIC WITH
ALUMINUM EDGING. PLANTING
BEDS TO BE FINISHED WITH
CURB EDGING.

LANDSCAPE SPECIFICATIONS:
(1)SWO 12" - 18" HIGH WICK RIVER
STONE MAINTENANCE
(2)BO 12" - 18" HIGH WICK RIVER
STONE MAINTENANCE
(3)HMS 12" - 18" HIGH WICK RIVER
STONE MAINTENANCE
(4)KCT 12" - 18" HIGH WICK RIVER
STONE MAINTENANCE
(5)DBH 12" - 18" HIGH WICK RIVER
STONE MAINTENANCE
(6)WWR 12" - 18" HIGH WICK RIVER
STONE MAINTENANCE
(7)PPR 12" - 18" HIGH WICK RIVER
STONE MAINTENANCE
(8)KCT 12" - 18" HIGH WICK RIVER
STONE MAINTENANCE
(9)PPC 12" - 18" HIGH WICK RIVER
STONE MAINTENANCE
(10)DC 12" - 18" HIGH WICK RIVER
STONE MAINTENANCE
(11)ABS 12" - 18" HIGH WICK RIVER
STONE MAINTENANCE
(12)HMS 12" - 18" HIGH WICK RIVER
STONE MAINTENANCE
(13)HMS 12" - 18" HIGH WICK RIVER
STONE MAINTENANCE
(14)KCT 12" - 18" HIGH WICK RIVER
STONE MAINTENANCE
(15)DBH 12" - 18" HIGH WICK RIVER
STONE MAINTENANCE
(16)MA 12" - 18" HIGH WICK RIVER
STONE MAINTENANCE
(17)HMS 12" - 18" HIGH WICK RIVER
STONE MAINTENANCE
(18)HMS 12" - 18" HIGH WICK RIVER
STONE MAINTENANCE
(19)HMS 12" - 18" HIGH WICK RIVER
STONE MAINTENANCE
(20)HMS 12" - 18" HIGH WICK RIVER
STONE MAINTENANCE
(21)HMS 12" - 18" HIGH WICK RIVER
STONE MAINTENANCE
(22)BES 12" - 18" HIGH WICK RIVER
STONE MAINTENANCE
(23)HMS 12" - 18" HIGH WICK RIVER
STONE MAINTENANCE
(24)HMS 12" - 18" HIGH WICK RIVER
STONE MAINTENANCE
(25)DBH 12" - 18" HIGH WICK RIVER
STONE MAINTENANCE
(26)KCT 12" - 18" HIGH WICK RIVER
STONE MAINTENANCE
(27)HMS 12" - 18" HIGH WICK RIVER
STONE MAINTENANCE
(28)HMS 12" - 18" HIGH WICK RIVER
STONE MAINTENANCE
(29)HMS 12" - 18" HIGH WICK RIVER
STONE MAINTENANCE
(30)HMS 12" - 18" HIGH WICK RIVER
STONE MAINTENANCE
(31)HMS 12" - 18" HIGH WICK RIVER
STONE MAINTENANCE
(32)HMS 12" - 18" HIGH WICK RIVER
STONE MAINTENANCE
(33)HMS 12" - 18" HIGH WICK RIVER
STONE MAINTENANCE
(34)HMS 12" - 18" HIGH WICK RIVER
STONE MAINTENANCE
(35)DBH 12" - 18" HIGH WICK RIVER
STONE MAINTENANCE
(36)KCT 12" - 18" HIGH WICK RIVER
STONE MAINTENANCE
(37)HMS 12" - 18" HIGH WICK RIVER
STONE MAINTENANCE
(38)HMS 12" - 18" HIGH WICK RIVER
STONE MAINTENANCE
(39)HMS 12" - 18" HIGH WICK RIVER
STONE MAINTENANCE
(40)HMS 12" - 18" HIGH WICK RIVER
STONE MAINTENANCE
(41)HMS 12" - 18" HIGH WICK RIVER
STONE MAINTENANCE
(42)HMS 12" - 18" HIGH WICK RIVER
STONE MAINTENANCE
(43)HMS 12" - 18" HIGH WICK RIVER
STONE MAINTENANCE
(44)HMS 12" - 18" HIGH WICK RIVER
STONE MAINTENANCE
(45)HMS 12" - 18" HIGH WICK RIVER
STONE MAINTENANCE
(46)HMS 12" - 18" HIGH WICK RIVER
STONE MAINTENANCE
(47)HMS 12" - 18" HIGH WICK RIVER
STONE MAINTENANCE
(48)HMS 12" - 18" HIGH WICK RIVER
STONE MAINTENANCE
(49)HMS 12" - 18" HIGH WICK RIVER
STONE MAINTENANCE
(50)HMS 12" - 18" HIGH WICK RIVER
STONE MAINTENANCE
(51)HMS 12" - 18" HIGH WICK RIVER
STONE MAINTENANCE
(52)HMS 12" - 18" HIGH WICK RIVER
STONE MAINTENANCE
(53)HMS 12" - 18" HIGH WICK RIVER
STONE MAINTENANCE
(54)HMS 12" - 18" HIGH WICK RIVER
STONE MAINTENANCE
(55)HMS 12" - 18" HIGH WICK RIVER
STONE MAINTENANCE
(56)HMS 12" - 18" HIGH WICK RIVER
STONE MAINTENANCE
(57)HMS 12" - 18" HIGH WICK RIVER
STONE MAINTENANCE
(58)HMS 12" - 18" HIGH WICK RIVER
STONE MAINTENANCE
(59)HMS 12" - 18" HIGH WICK RIVER
STONE MAINTENANCE
(60)HMS 12" - 18" HIGH WICK RIVER
STONE MAINTENANCE
(61)HMS 12" - 18" HIGH WICK RIVER
STONE MAINTENANCE
(62)HMS 12" - 18" HIGH WICK RIVER
STONE MAINTENANCE
(63)HMS 12" - 18" HIGH WICK RIVER
STONE MAINTENANCE
(64)HMS 12" - 18" HIGH WICK RIVER
STONE MAINTENANCE
(65)HMS 12" - 18" HIGH WICK RIVER
STONE MAINTENANCE
(66)HMS 12" - 18" HIGH WICK RIVER
STONE MAINTENANCE
(67)HMS 12" - 18" HIGH WICK RIVER
STONE MAINTENANCE
(68)HMS 12" - 18" HIGH WICK RIVER
STONE MAINTENANCE
(69)HMS 12" - 18" HIGH WICK RIVER
STONE MAINTENANCE
(70)HMS 12" - 18" HIGH WICK RIVER
STONE MAINTENANCE
(71)HMS 12" - 18" HIGH WICK RIVER
STONE MAINTENANCE
(72)HMS 12" - 18" HIGH WICK RIVER
STONE MAINTENANCE
(73)HMS 12" - 18" HIGH WICK RIVER
STONE MAINTENANCE
(74)HMS 12" - 18" HIGH WICK RIVER
STONE MAINTENANCE
(75)HMS 12" - 18" HIGH WICK RIVER
STONE MAINTENANCE
(76)HMS 12" - 18" HIGH WICK RIVER
STONE MAINTENANCE
(77)HMS 12" - 18" HIGH WICK RIVER
STONE MAINTENANCE
(78)HMS 12" - 18" HIGH WICK RIVER
STONE MAINTENANCE
(79)HMS 12" - 18" HIGH WICK RIVER
STONE MAINTENANCE
(80)HMS 12" - 18" HIGH WICK RIVER
STONE MAINTENANCE
(81)HMS 12" - 18" HIGH WICK RIVER
STONE MAINTENANCE
(82)HMS 12" - 18" HIGH WICK RIVER
STONE MAINTENANCE
(83)HMS 12" - 18" HIGH WICK RIVER
STONE MAINTENANCE
(84)HMS 12" - 18" HIGH WICK RIVER
STONE MAINTENANCE
(85)HMS 12" - 18" HIGH WICK RIVER
STONE MAINTENANCE
(86)HMS 12" - 18" HIGH WICK RIVER
STONE MAINTENANCE
(87)HMS 12" - 18" HIGH WICK RIVER
STONE MAINTENANCE
(88)HMS 12" - 18" HIGH WICK RIVER
STONE MAINTENANCE
(89)HMS 12" - 18" HIGH WICK RIVER
STONE MAINTENANCE
(90)HMS 12" - 18" HIGH WICK RIVER
STONE MAINTENANCE
(91)HMS 12" - 18" HIGH WICK RIVER
STONE MAINTENANCE
(92)HMS 12" - 18" HIGH WICK RIVER
STONE MAINTENANCE
(93)HMS 12" - 18" HIGH WICK RIVER
STONE MAINTENANCE
(94)HMS 12" - 18" HIGH WICK RIVER
STONE MAINTENANCE
(95)HMS 12" - 18" HIGH WICK RIVER
STONE MAINTENANCE
(96)HMS 12" - 18" HIGH WICK RIVER
STONE MAINTENANCE
(97)HMS 12" - 18" HIGH WICK RIVER
STONE MAINTENANCE
(98)HMS 12" - 18" HIGH WICK RIVER
STONE MAINTENANCE
(99)HMS 12" - 18" HIGH WICK RIVER
STONE MAINTENANCE
(100)HMS 12" - 18" HIGH WICK RIVER
STONE MAINTENANCE



DIGGERS HOTLINE
Dial 811 or (800)242-8511
www.DiggersHotline.com

HATCH LEGEND

	AREAS DESTROYED BY CONSTRUCTION TO BE RESTORED WITH MINIMUM 4" TOPSOIL, IDENTIFY BLUE GRASS SEED, PERFORATED, AND MULCH TOPSOIL, USE SALVAGED TOPSOIL, OR IMPORT TOPSOIL, IF REQUIRED.
	AREAS DESTROYED BY CONSTRUCTION TO BE RESTORED WITH MINIMUM 4" TOPSOIL, NO SOIL PERFORATION, AND MULCH TOPSOIL, USE SALVAGED TOPSOIL, OR IMPORT TOPSOIL, IF REQUIRED.

△ Revisions
1 CONSTRUCTION BULLETIN 01 5/22/2020

SCOPE
CONSTRUCTION
DOCUMENTS
ASSOCIATED BANK
CC 80148 MADISON

7722 MINERAL POINT ROAD
MADISON, WI 53717
Date Issued: 5/8/20
RINKA project #: 80148
Sheet Title
SITE LANDSCAPE
PLAN

Sheet # **L101**