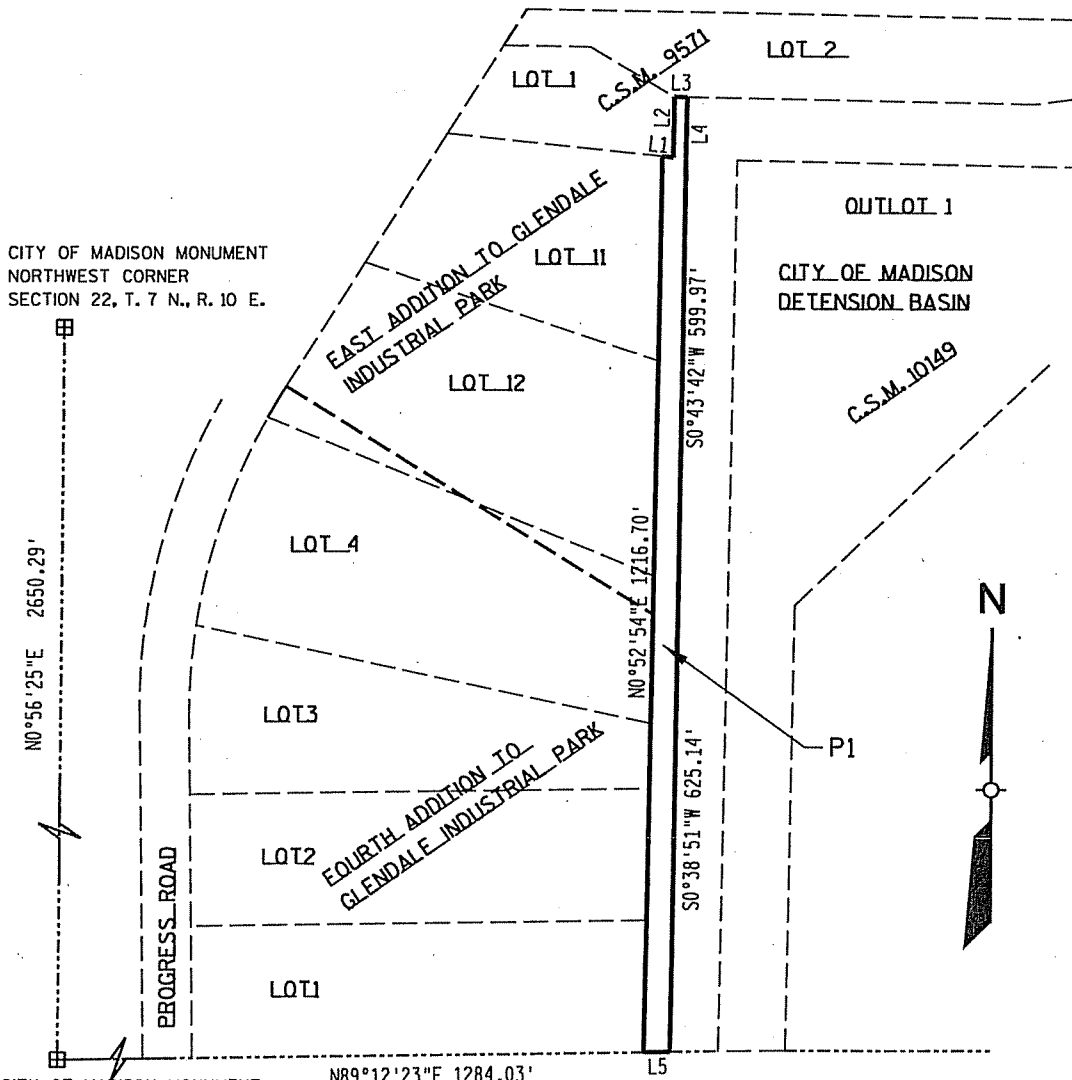
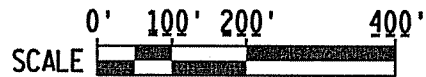


# EXHIBIT "B"

LOCATED IN PART OF THE SW 1/4 OF THE NW 1/4,  
SECTION 22, TOWNSHIP 7 NORTH, RANGE 10 EAST  
CITY OF MADISON, DANE COUNTY, WISCONSIN

## LINE TABLE

No.	Direction	Distance
L1	S 83°50'21" E	14.77'
L2	N 0°57'21" E	82.46'
L3	S 88°58'28" E	16.83'
L4	S 0°51'14" W	71.60'
L5	S 89°12'23" W	35.86'



CITY OF MADISON MONUMENT  
NORTHWEST CORNER  
SECTION 22, T. 7 N., R. 10 E.  
CITY OF MADISON MONUMENT  
W1/4 CORNER  
SECTION 22, T. 7 N., R. 10 E.  
THIS INSTRUMENT WAS  
DRAFTED BY EARTH TECH  
EARTH TECH, INC.  
MADISON, WI 53717

P1 = PERMANENT MUNICIPAL UTILITY EASEMENT

SHEET -- OF --

OWNER:  
CITY OF MADISON  
215 MARTIN LUTHER KING JR. BLVD  
MADISON, WI 53703