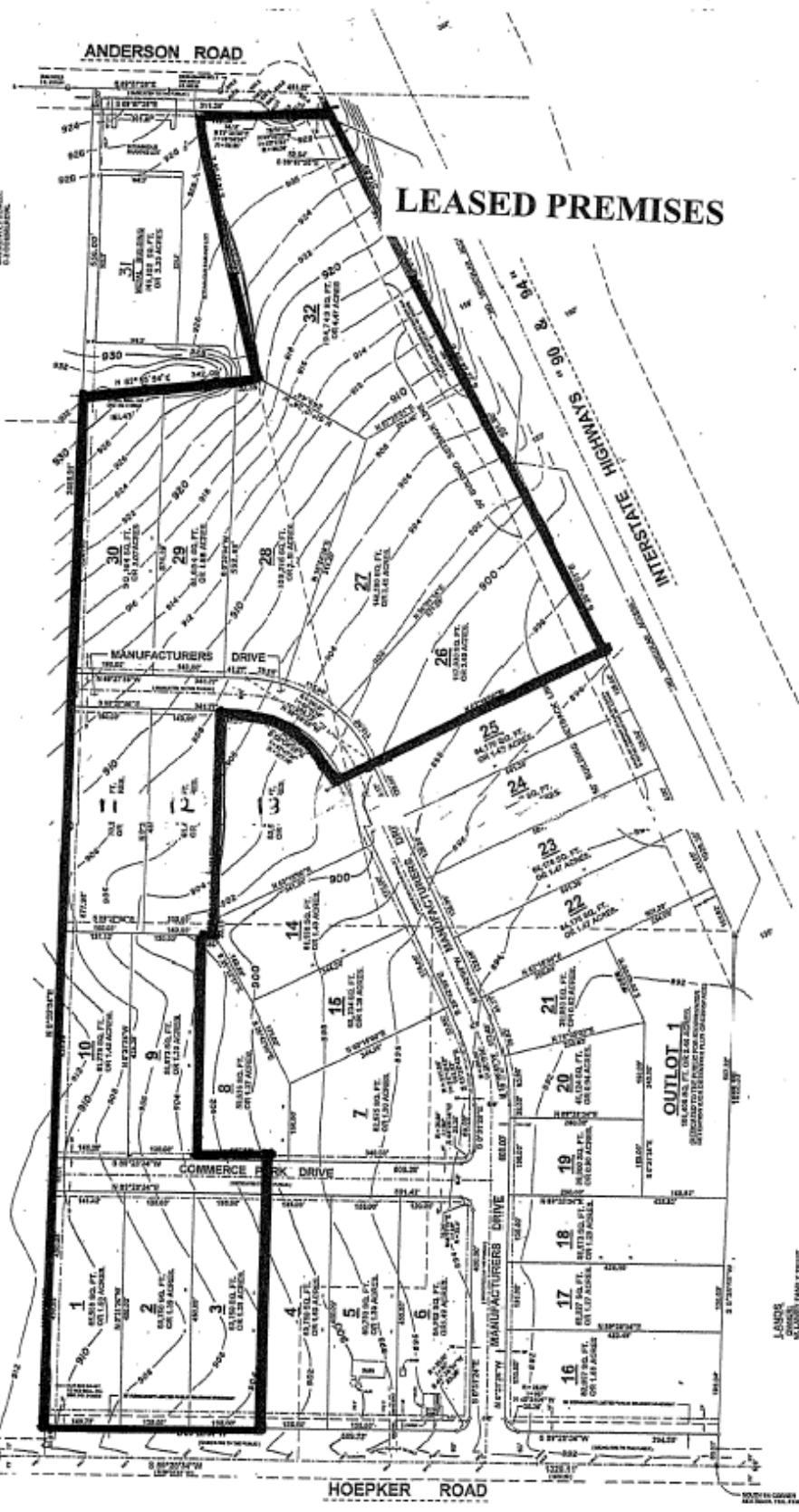


LOT 1
 386.60 SQ. FT.
 0.008 ACRES
 100' WIDE
 100' DEEP

**"PRELIMINARY PLAT"
 INTI STATE COMMERCE PARK**
 PART OF THE SW 1/4 OF SECTION 9, T8N, R10E, CITY OF MANITOWISH, DADE COUNTY, WISCONSIN.

LOT 2
 386.60 SQ. FT.
 0.008 ACRES
 100' WIDE
 100' DEEP

LOT 3
 386.60 SQ. FT.
 0.008 ACRES
 100' WIDE
 100' DEEP



MANITOWISH COUNTY, WISCONSIN
 COUNTY CLERK
 OFFICE
 1000 W. WISCONSIN STREET
 MANITOWISH, WISCONSIN 53150
 PHONE: (262) 681-1200
 FAX: (262) 681-1201
 REVISED: SEPTEMBER 11, 2009

LANDSCAPE ARCHITECT
 1000 W. WISCONSIN STREET
 MANITOWISH, WISCONSIN 53150