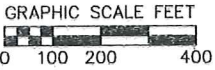


Ordinance No. _____
I.D. No. _____
Date Adopted: _____
Date Published: _____
Aldermanic District Attached to: _____

Area to CL Starkweather Creek: 2,870,291 s.f.; 65.893 Acres; Square Miles: 0.1030

PREPARED FOR:
VOIT LAND, LLC
3450 MILWAUKEE STREET
MADISON, WI 53714

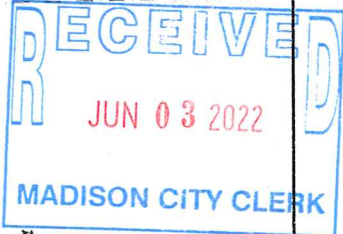
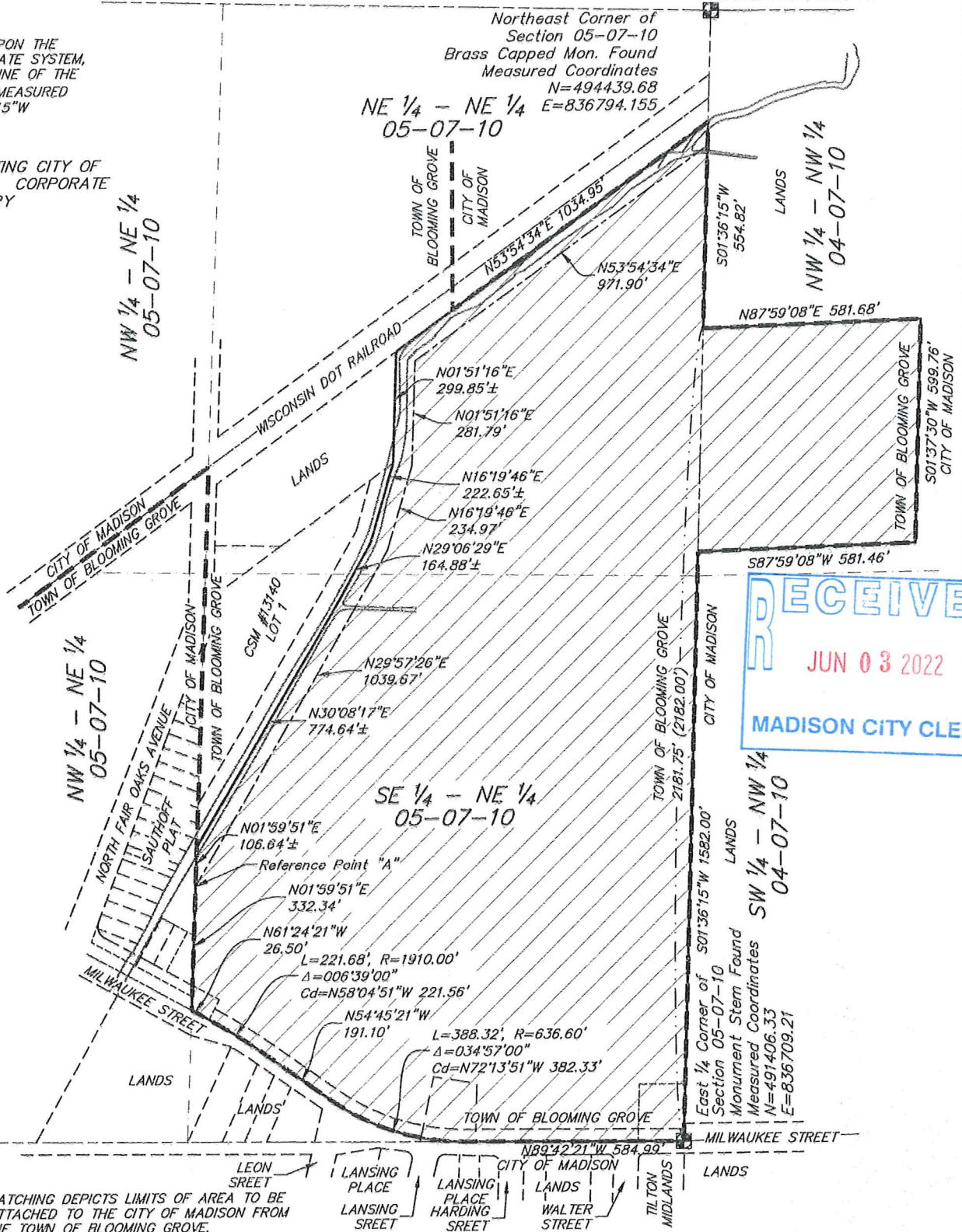
PREPARED BY:
VIERBICHER ASSOCIATES, INC.
BY: MICHAEL S. MARTY
999 FOURIER DRIVE,
SUITE 201
MADISON, WI 53717
(608)-821-3955
mmar@vierbicher.com



BEARINGS ARE BASED UPON THE WISCONSIN COUNTY COORDINATE SYSTEM, DANE COUNTY, THE WEST LINE OF THE NW 1/4 OF SEC 04-07-10 MEASURED AS BEARING S01°36'15"W

LEGEND:

--- = EXISTING CITY OF MADISON CORPORATE BOUNDARY



21 Mar 2022 - 12:23p M:\Stone House Development\220031_Voit Farm\CADD\220031_Attachment Map.dwg by: mmar

Center of Section 05-07-10
Brass Capped Monument Found
Measured Coordinates
N=491420.34
E=833980.04

HATCHING DEPICTS LIMITS OF AREA TO BE ATTACHED TO THE CITY OF MADISON FROM THE TOWN OF BLOOMING GROVE.

vierbicher
planners | engineers | advisors



Phone: (800) 261-3898

SCALE MAP

ATTACHMENT TO THE CITY OF MADISON,
FROM THE TOWN OF BLOOMING GROVE,
DANE COUNTY, WISCONSIN

DWG	Attachment Map.dwg	DATE	MARCH 21, 2022
DRAFTER	MMAR	SHEET	
CHECKED	MZIE		1 OF 1
PROJECT NO.	220031		