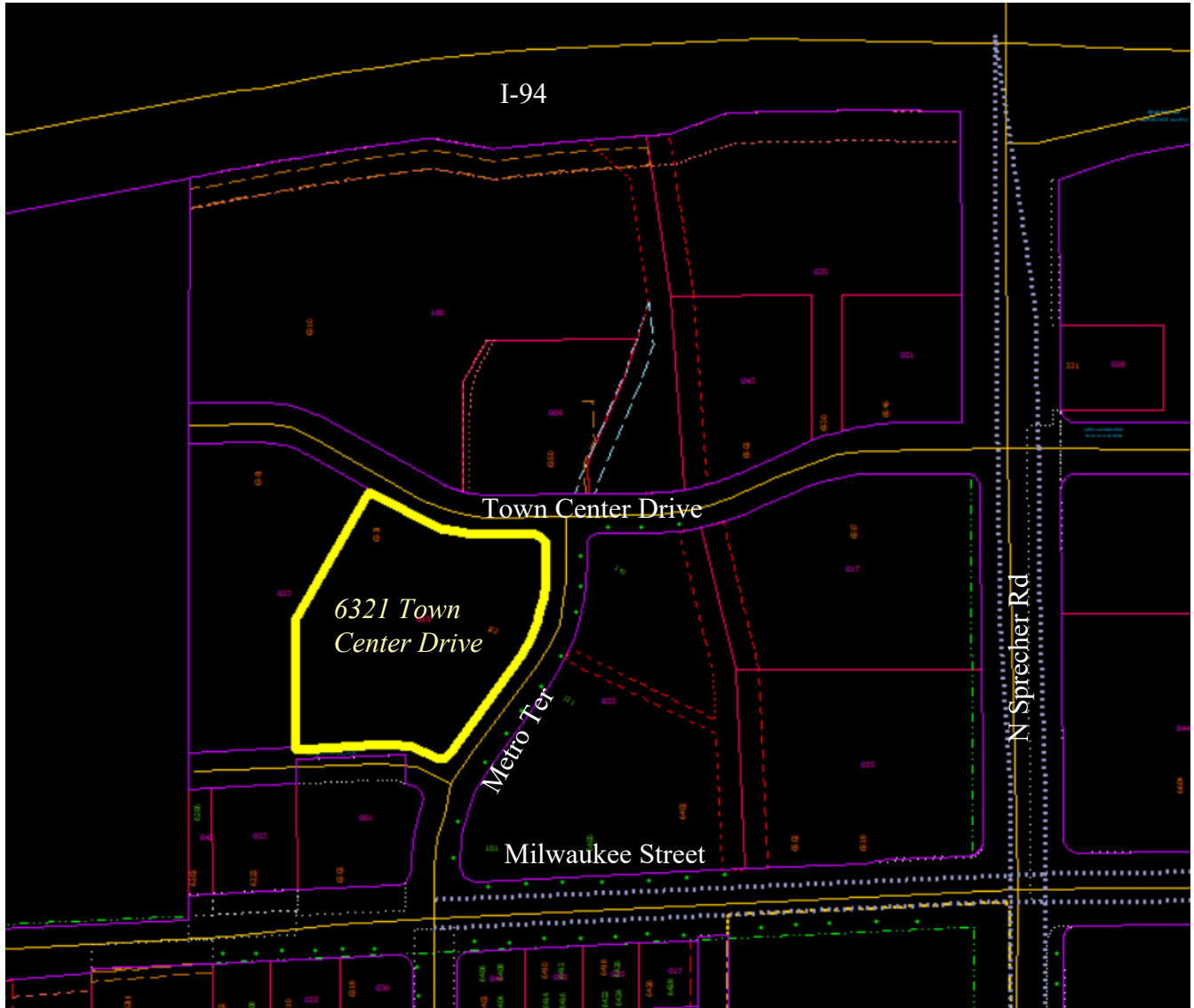


# 6321 Town Center Drive – Ellefson Metro Tech Apartments

Project Location

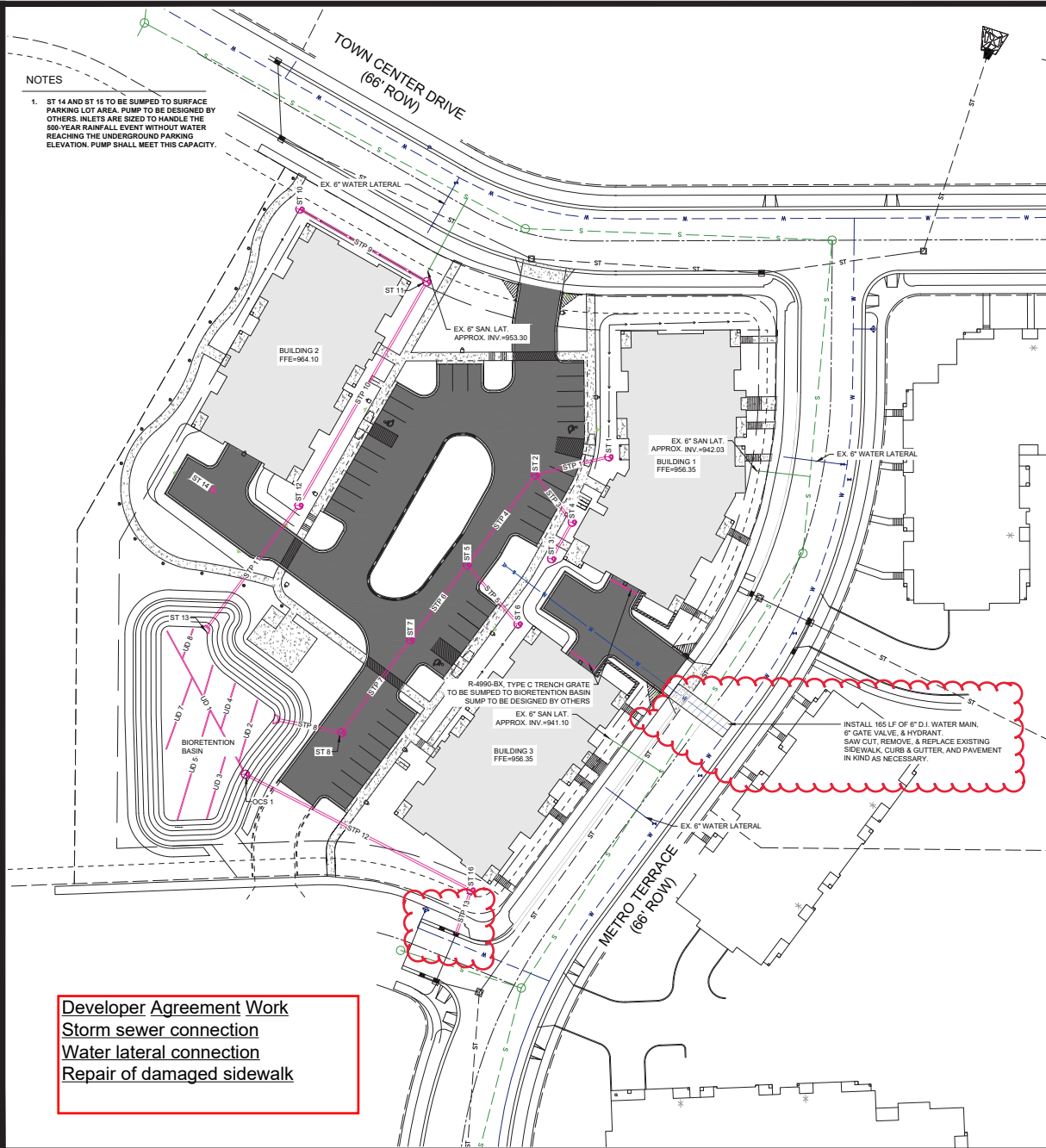
Project Number: 13784

Contract Number: 9074



# NOTES

- ST 14 AND ST 15 TO BE SUMPED TO SURFACE PARKING LOT AREA. PUMP TO BE DESIGNED BY OTHERS. INLETS ARE SIZED TO HANDLE THE 500-YEAR RAINFALL EVENT WITHOUT WATER REACHING THE UNDERGROUND PARKING ELEVATION. PUMP SHALL MEET THIS CAPACITY.



## STRUCTURE TABLE

STRUCTURE NAME	RIM EL.	STRUCTURE TYPE	INVERTS IN	INVERTS OUT	FRAME/GRATE
OCS 1	951.99	48" CONC. MH	NW = 947.39	SE = 947.50	R-4342
ST 1	955.31	48" CONC. MH		W = 952.20	R-4342
ST 2	955.50	48" CONC. MH	E = 951.88 SE = 951.88	SW = 951.88	R-1550
ST 3	956.90	48" CONC. MH		NE = 953.79	R-4342
ST 4	955.50	48" CONC. MH	SW = 952.70	NW = 952.70	R-4342
ST 5	956.45	48" CONC. MH	NE = 951.40 SE = 951.40	SW = 951.40	R-1550
ST 6	955.05	48" CONC. MH		NW = 951.94	R-4342
ST 7	954.60	48" CONC. MH	NE = 951.02	SW = 950.77	R-1550
ST 8	955.00	48" CONC. MH	NE = 950.30	W = 950.30	R-1550
ST 9	951.35	15" AE	E = 950.00		
ST 10	962.32	48" CONC. MH		SE = 959.21	R-4342
ST 11	963.32	48" CONC. MH	NW = 956.75	SW = 956.75	R-4342
ST 12	951.80	48" CONC. MH	NE = 952.42	SW = 952.42	R-4342
ST 13	951.11	12" AE	NE = 950.00		
ST 14	954.27	2X3' CI			R-3067
ST 16	952.60	48" CONC. MH	NW = 946.64	S = 946.64	R-4342

## STORM PIPE TABLE

PIPE NAME	PIPE TYPE	SIZE (IN.)	FROM	TO	LENGTH (FT)	START INV.	END INV.	SLOPE
STP 1	N12 HDPE	12	ST 1	ST 2	45	952.20	951.88	0.72%
STP 2	N12 HDPE	12	ST 3	ST 4	25	953.79	952.70	4.36%
STP 3	N12 HDPE	12	ST 4	ST 2	35	952.70	951.88	2.31%
STP 4	N12 HDPE	12	ST 2	ST 5	67	951.88	951.40	0.72%
STP 5	N12 HDPE	12	ST 6	ST 5	46	951.94	951.40	1.17%
STP 6	N12 HDPE	12	ST 5	ST 7	56	951.40	951.02	0.68%
STP 7	N12 HDPE	15	ST 7	ST 8	69	950.77	950.30	0.68%
STP 8	N12 HDPE	15	ST 8	ST 9	41	950.30	950.00	0.74%
STP 9	N12 HDPE	12	ST 10	ST 11	87	959.21	956.75	2.83%
STP 10	N12 HDPE	12	ST 11	ST 12	153	956.75	952.42	2.83%
STP 11	N12 HDPE	12	ST 12	ST 13	93	952.42	950.00	2.61%
STP 12	N12 HDPE	12	OCS 1	ST 16	150	947.50	946.64	0.57%
STP 13	N12 HDPE	12	ST 16		27	946.64	946.48	0.57%
UD 1	PVC	6		OCS 1	97	947.48	947.39	0.09%
UD 2	PVC	6			38	947.48	947.45	0.09%
UD 3	PVC	6			46	947.48	947.24	0.54%
UD 4	PVC	6			28	947.48	947.46	0.09%
UD 5	PVC	6			67	947.48	947.22	0.38%
UD 6	PVC	6			19	947.48	947.47	0.07%
UD 7	PVC	6			45	947.48	947.44	0.09%

6321 TOWN CENTER DRIVE  
UTILITY PLAN



Project No: 121.02.16.30  
Sheet C 2.8

CITY OF MADISON, DANE COUNTY, WI

SNYDER & ASSOCIATES, INC.

6301 US 52 S. 2ND FLOOR  
MADISON, WISCONSIN 53718  
608.336.0444 | www.snyder-assoc.com

MARK	Engineer: BCA	Checked By: MLC	Date: 03-31-21	Scale: 1" = 40'	Revision: 1
DATE	04-22-21	DATE	04-22-21	DATE	04-22-21
BY	BCA	BY	BCA	BY	BCA
PROJECT	6321 TOWN CENTER DRIVE	PROJECT	6321 TOWN CENTER DRIVE	PROJECT	6321 TOWN CENTER DRIVE
SHEET	C 2.8	SHEET	C 2.8	SHEET	C 2.8