

MADISON, WISCONSIN

CITY OF MADISON

ENGINEERING DIVISION

DEPARTMENT OF PUBLIC WORKS

PLAN OF PROPOSED IMPROVEMENT

SHEET INDEX

GENERAL SITE

- 1 TITLE SHEET
- 2 GENERAL SITE PLAN
- 3 EROSION CONTROL / GRADING PLAN
- 4

UTILITY PLAN (INCLUDE ALL FIBER)

CONSTRUCTION DETAILS

WEIGH SCALE

- X SCALE PLAN AND SECTION DETAIL
- X SCALE REINFORCING PLAN AND DETAILS
- X SCALE DETAILS AND GENERAL NOTES
- X SCALE ELECTRICAL SCHEMATIC

FUEL POINT

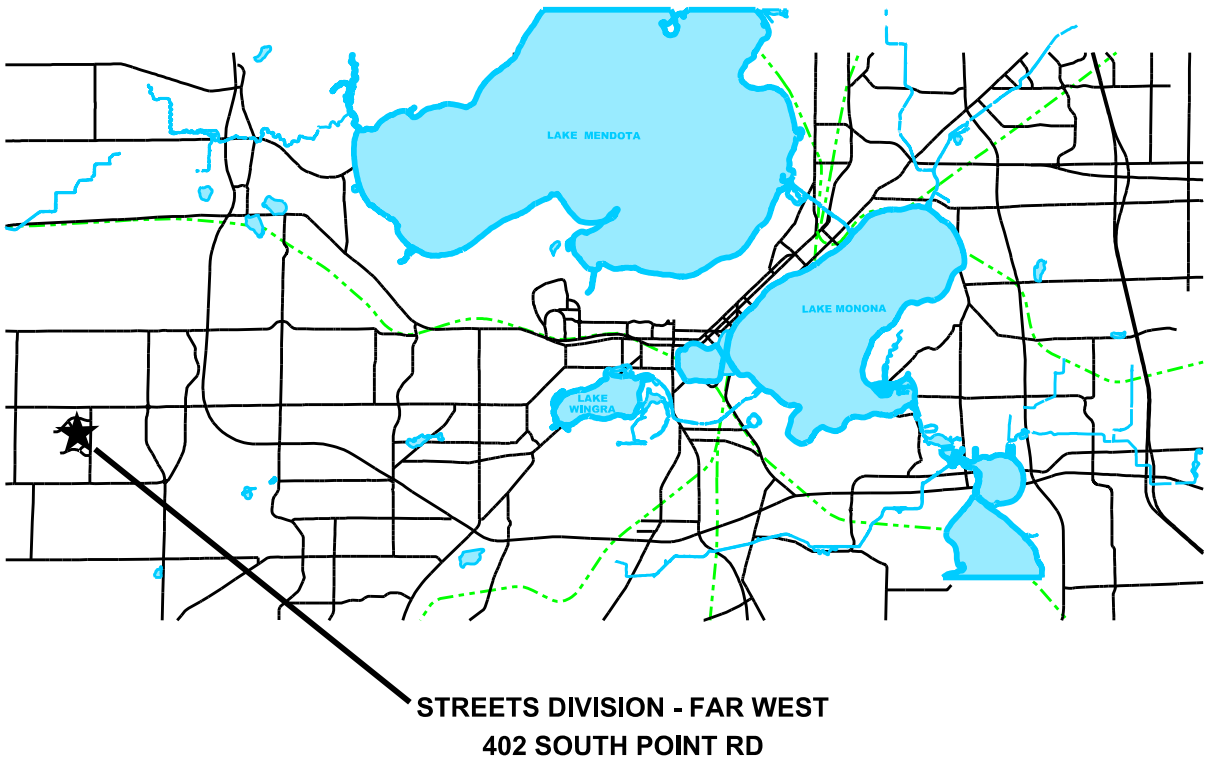
- X FUEL POINT ENLARGED PLAN AND NOTES
- X FUEL POINT ENLARGED UTILITY PLAN
- X FUEL POINT CONSTRUCTION DETAILS
- X FUEL POINT MISC. DETAILS

GAS HUT

- X GAS HUT FLOOR PLAN AND INTERIOR FINISH PLAN / NOTES
- X GAS HUT ELEVATIONS AND EXTERIOR FINISH NOTES
- X GAS HUT STRUCTURAL PLANS, DETAILS, SPECIFICATIONS
- X GAS HUT BUILDING SECTIONS AND DETAILS
- X GAS HUT H.M. OPENING DETAILS AND SPECIFICATIONS
- X GAS HUT PV AND ELECTRICAL PLANS
- X GAS HUT ELECTRICAL SCHEMATICS
- X GAS HUT PLUMBING PLANS AND DETAILS

SOUTH POINT RD TRUCK SCALE AND FUEL POINT

PROJECT NO. 12444
CONTRACT NO. 8606



BUILDING DESIGN APPROVED BY:

STRUCTURAL DESIGN BY:

ABBY PERTZBORN, E-38745-6, IMEG

STORM WATER MANAGEMENT DESIGN
APPROVED BY:

PUBLIC WORKS
IMPROVEMENT PROJECT

APPROVED BY THE
COMMON COUNCIL OF
MADISON WISCONSIN

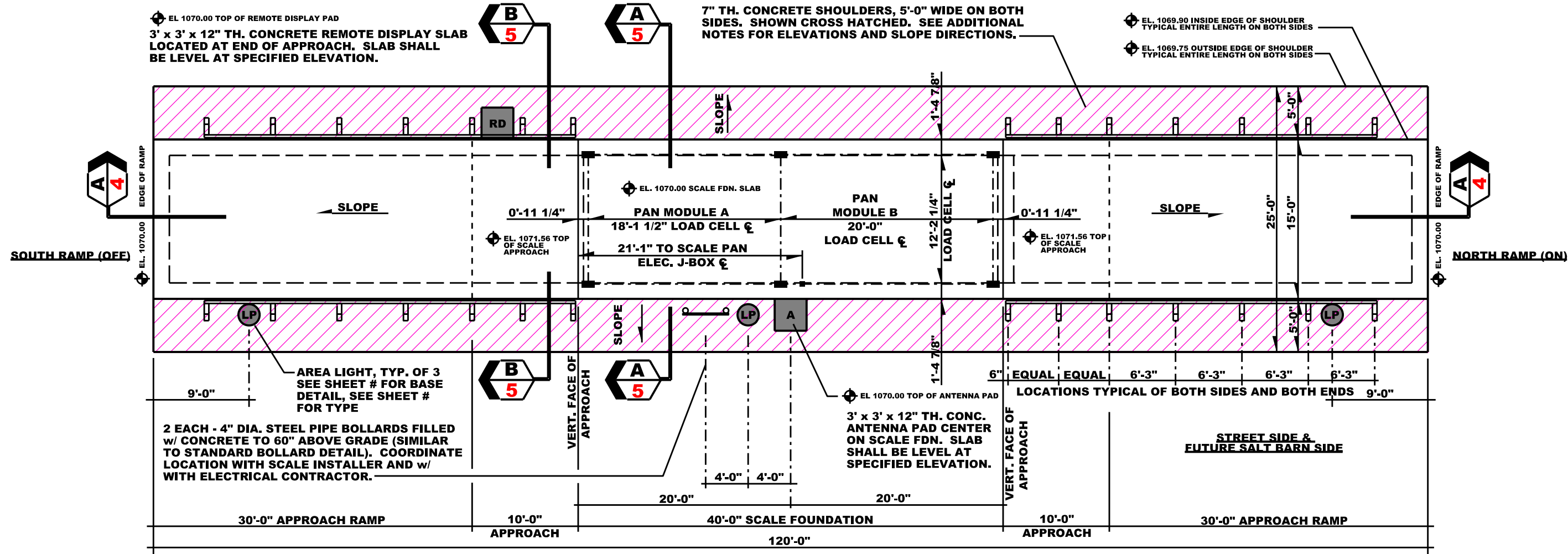
RES:
FILE ID:
DATE:

PUBLIC WORKS IMPROVEMENT DESIGN

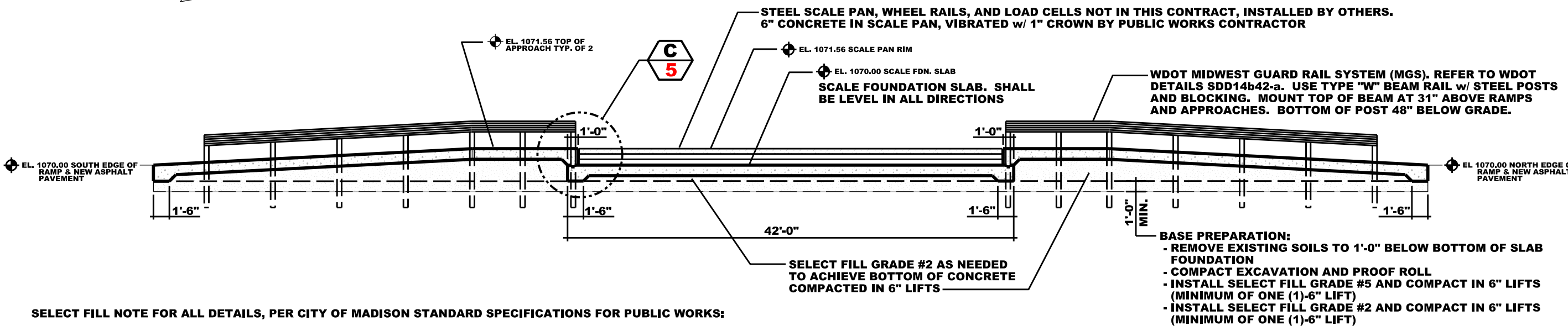
APPROVED BY

CITY ENGINEER

DATE



PLAN VIEW - FOUNDATION SLAB AND VEHICLE APPROACHES



A-A/4 SECTION THRU FDN SLAB AND APPROACHES



SCALE 11x17 PRINT: 1" = 10'

SCALE 11x17 PRINT: 1" = 10'

METAL ROOFING AND TRIM
SEE SPECIFICATIONS AND
DETAILS

SPLIT FACE CMU, SEE
SPECIFICATIONS

ASPHALT
PAVING

HAND RAIL #1 AT CURB
FOR ADA RAMP SEE
DETAIL 5 ON THIS SHEET

WALL MOUNTED LIGHT ON 1/2 STANDARD
CMU BLOCK, PRIMED AND PAINTED,
COORDINATE w/ ELEC. CONTRACTOR

HAND RAIL #2 AT END
OF SIDEWALK SEE
DETAIL ON THIS SHEET

TRUSS BEARING

8'-3"

EL 100'-0"
FINISHED FLR.

TOP OF FOOTING

PITCH TOP OF CURB WITH
RAMP FROM TOP OF SIDEWALK
TO GRADE AT END OF RAMP

EXHAUST LOUVER, SEE
ELECTRICAL PLAN SHEET #.
TYPICAL OF 2.

ELECTRICAL SERVICE/METER
AND PV UTILITY DISCONNECT
ON STANDARD CMU BLOCK,
PRIMED AND PAINTED,
COORDINATE w/ ELEC. CONTR.

1/# WEST ELEVATION

SCALE 11x17 PRINT: 1" = 10'

2/# SOUTH ELEVATION

SCALE 11x17 PRINT: 1" = 10'

WALL MOUNTED LIGHT ON 1/2 STANDARD
CMU BLOCK, PRIMED AND PAINTED,
COORDINATE w/ ELEC. CONTRACTOR

HAND RAIL #2 AT
END OF SIDEWALK
BEYOND

B-2

BOLLARD B-2, 48",
U-LINE MODEL H-4466
YELLOW w/ REFLECTIVE
TAPE. BOLT TO CURB
AND SIDEWALK.
TYP. OF 3

TRUSS BEARING

8'-3"

EL 100'-0"
FINISHED FLR.

TOP OF FOOTING

3/# EAST ELEVATION

SCALE 11x17 PRINT: 1" = 10'

4/# NORTH ELEVATION

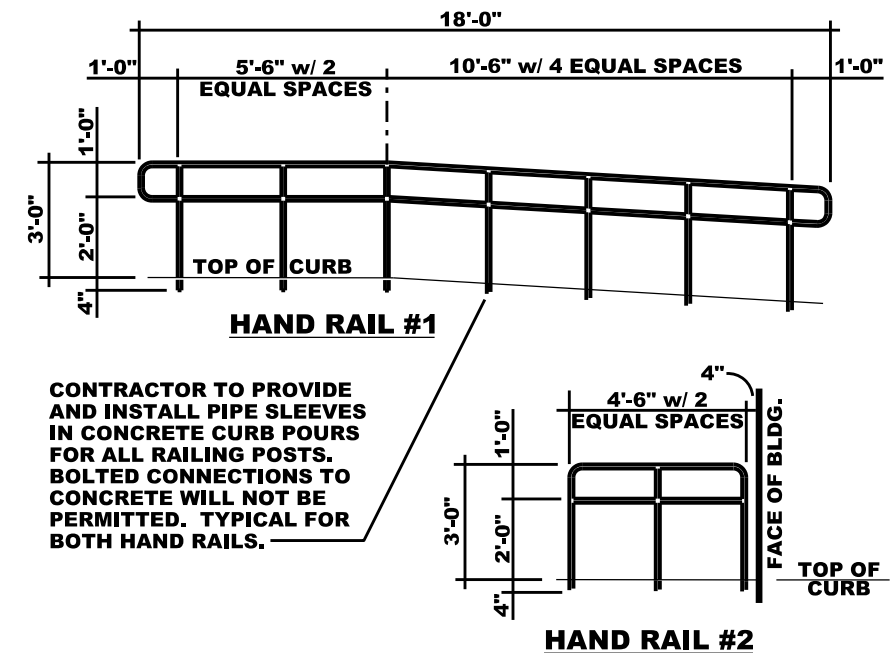
SCALE 11x17 PRINT: 1" = 10'

GENERAL ELEVATION AND BUILDING SECTION NOTES:

1. ELEVATION EQUATION:
EL 100'-0" ON ARCHITECTURAL SHEETS = EL XXX.XX' ON CIVIL SHEETS
2. ALL ELEVATIONS AND SECTIONS ARE SHOWN WITHOUT REQUIRED PHOTOVOLTAIC (PV) SOLAR PANELS. SEE DETAILS SHEET X FOR MORE INFORMATION ON PV INSTALLATION REQUIREMENTS.

EXTERIOR FINISH NOTES:

1. METAL DOORS AND FRAMES REFER TO INTERIOR FINISH NOTES ON SHEET XX.
2. ALL EXTERIOR CMU WALLS SHALL BE TYPE N GRADE, MOMINAL BLOCK 8" x 8" x 16", COLORED SPLIT-FACE MASONRY UNITS AS MANUFACTURED BY COUNTY MATERIALS OR APPROVED EQUAL. COLOR BASED ON COUNTY MATERIALS #252 - TANNED LEATHER. PROVIDE COLORED SAMPLES TO OWNER REP PRIOR TO ORDERING BLOCK. PROVIDE ALL STRETCHERS, CORNERS, CAPS, CAP ENDS, BULLNOSES AND BOND BEAMS AS REQUIRED FOR A COMPLETE INSTALLATION.
3. ALL EXTERIOR CMU WALLS (STANDARD CMU - NOT SPLIT FACE BLOCK) SHALL BE TYPE N GRADE, MOMINAL BLOCK 8" x 8" x 16", PROVIDE ALL STRETCHERS AS REQUIRED FOR A COMPLETE INSTALLATION. STANDARD CMU BLOCK SHALL BE PRIMED AND PAINTED AS FOLLOWS:
PRIMER: PREPRITE BLOCK FILLER, B25W25, APPLIED PER MANUFACTURER INSTRUCTIONS
PAINTED: TWO (2) COATS SHERWIN WILLIAMS, PROMAR 200 ZERO VOC INTERIOR LATEX, EGSHEL, COLOR = MATCH COLOR OF SPLIT FACE BLOCK
**NOTE SEE BUILDING ELEVATIONS ABOVE FOR EXACT LOCATIONS OF THIS APPLICATION.
4. ALL EXTERIOR CAULKING OF DOORS AND WINDOW SHALL BE WEATHERPROOF AND COLOR MATCHED TO FRAMES.
5. ALL METAL ROOFING AND TRIM, COLOR = HUNTER GREEN



CONTRACTOR TO PROVIDE
AND INSTALL PIPE SLEEVES
IN CONCRETE CURB POURS
FOR ALL RAILING POSTS.
BOLTED CONNECTIONS TO
CONCRETE WILL NOT BE
PERMITTED. TYPICAL FOR
BOTH HAND RAILS.

HANDRAIL NOTES:

1. ALL PIPING TO BE 1-1/4" ROUND STEEL PIPING.
2. ALL WELDS TO BE FILLET, COMPLETE, AND GROUND SMOOTH.
3. HANDRAILS TO BE PRIMED AND PAINTED AS FOLLOWS:
PRIMER: PRO INDUSTRIAL PRO-CRYL UNIVERSAL PRIMER
PAINTED: PRO INDUSTRIAL PRE-CATALYZED WATERBASED EPOXY, FLAT, COLOR = SAFETY YELLOW
CONTRACTOR SHALL TOUCH-UP AS NEEDED PRIOR TO OCCUPANCY

5/# HANDRAIL DETAILS

NOT TO SCALE

CITY OF MADISON - ENGINEERING
CONTRACT 8606
SOUTH POINT SCALE AND FUELING

GAS HUT ELEVATIONS, EXTERIOR
FINISH NOTES, AND DETAILS

#