

Review Area Shown in RED
1 inch = 1 miles

6943: Fitchburg to Nine Springs ENVIRONMENTAL SCREENING ACCESS PLAN



ENVIRONMENTAL REVIEW AND MAPS CREATED:
FEBRUARY 2012

Notes:

**ENVIRONMENTAL CONSTRUCTION DATA
CREATED FOR CARTOGRAPHIC PURPOSES ONLY.**

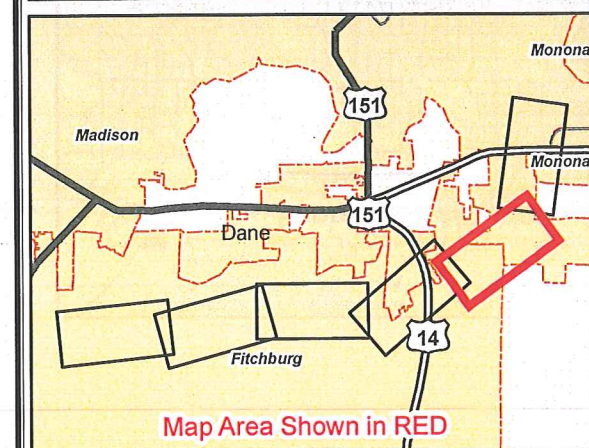
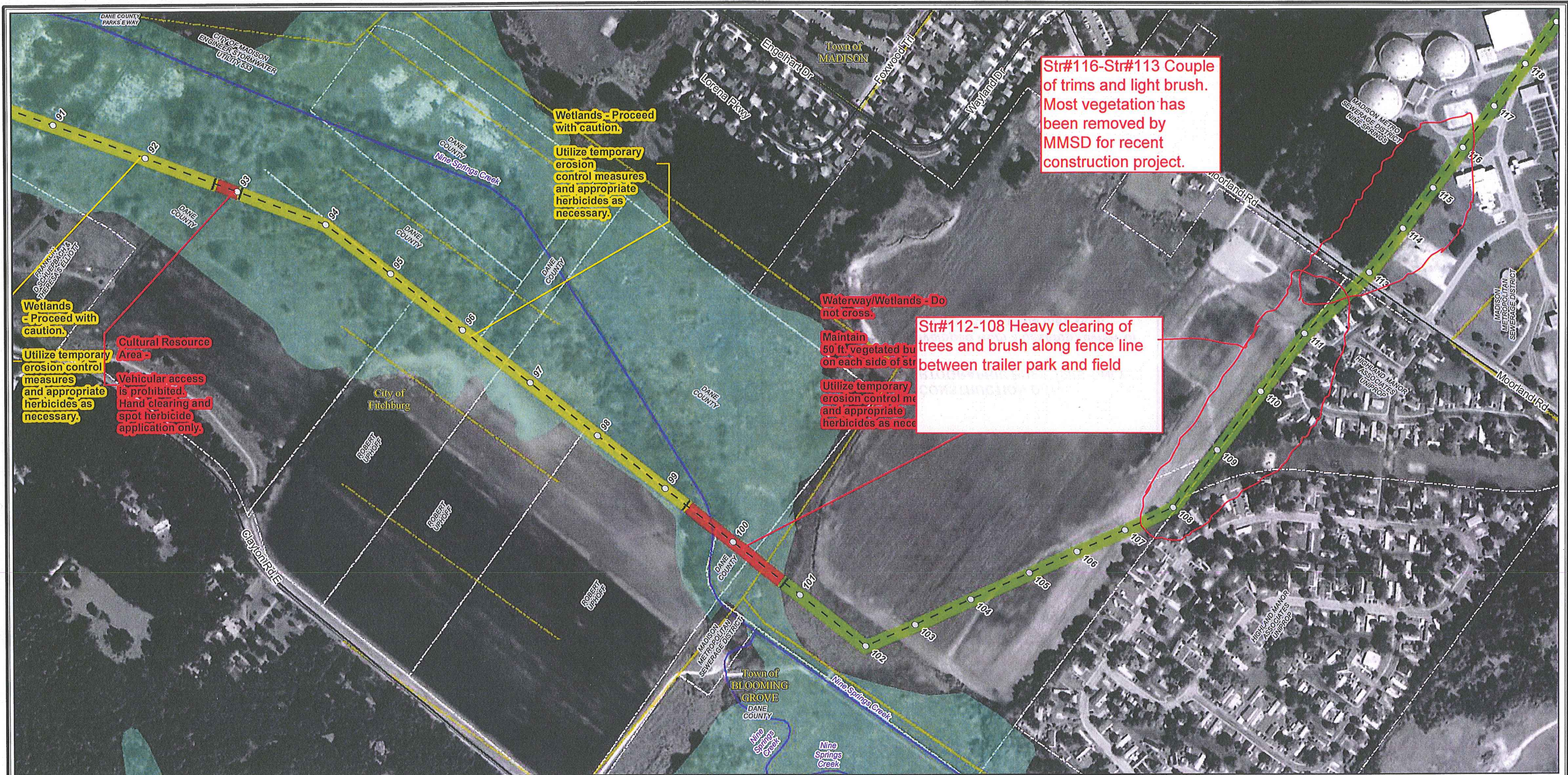
*Maps have been developed from a desktop review of
available data. Actual field conditions may vary.*

*Additional waterways and wetlands not identified on
these maps may be encountered in the field.
Apply conservation measures as appropriate.*

Data Reviewed and Sources:

1. Waterways and Wetlands - Wisconsin DNR, 24K Hydrology Shapefile and Database, 2005
2. State-Owned Lands - Wisconsin DNR, DNR Managed Lands Shapefile and Database, 2011
3. Municipal Boundaries - Wisconsin OLIS, Wisconsin MCD Shapefile and Database, 2000
4. Slopes and Topographic Features - USGS Digital Topographic Map
5. Aerial Photography - 2010 USDA-NAIP Orthoimagery

Restriction Summary	Date(s)	Length	Type
	4/1-10/15	0.6 miles	Hand Cut; Spot Spray



○ Existing Pole		MAINTENANCE ACCESS	
■ Existing Substation		Clear Access	
— Existing Transmission Line		Access with Caution <i>Environmental Considerations Noted on Map</i>	
— WI/MI DNR Mapped Waterbodies		Restricted or Limited Access <i>Environmental Considerations Noted on Map</i>	
Potential Wetland (WI - WWI) (MI - NWI)		Organic Product Handlers	Organic Producers
Public Owned Lands	Federal Owned Lands	Field Located Waterway	
Parcel Boundary	Municipal Boundary	Delineated Wetland	

ENVIRONMENTAL CONSTRUCTION DATA
 CREATED FOR CARTOGRAPHIC PURPOSES ONLY.

Maps have been developed from a desktop review of available data. Actual field conditions may vary.

Additional waterways and wetlands not identified on these maps may be encountered in the field. Apply conservation measures as appropriate.

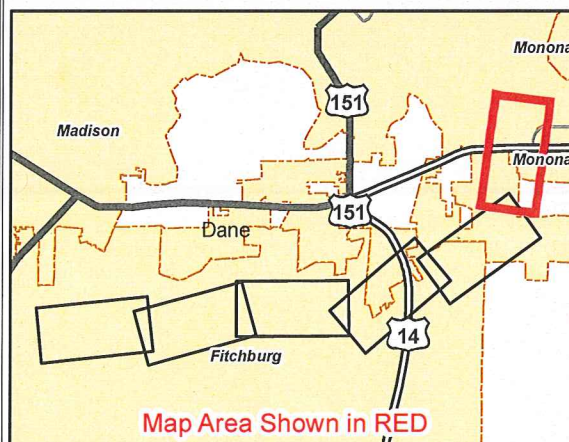
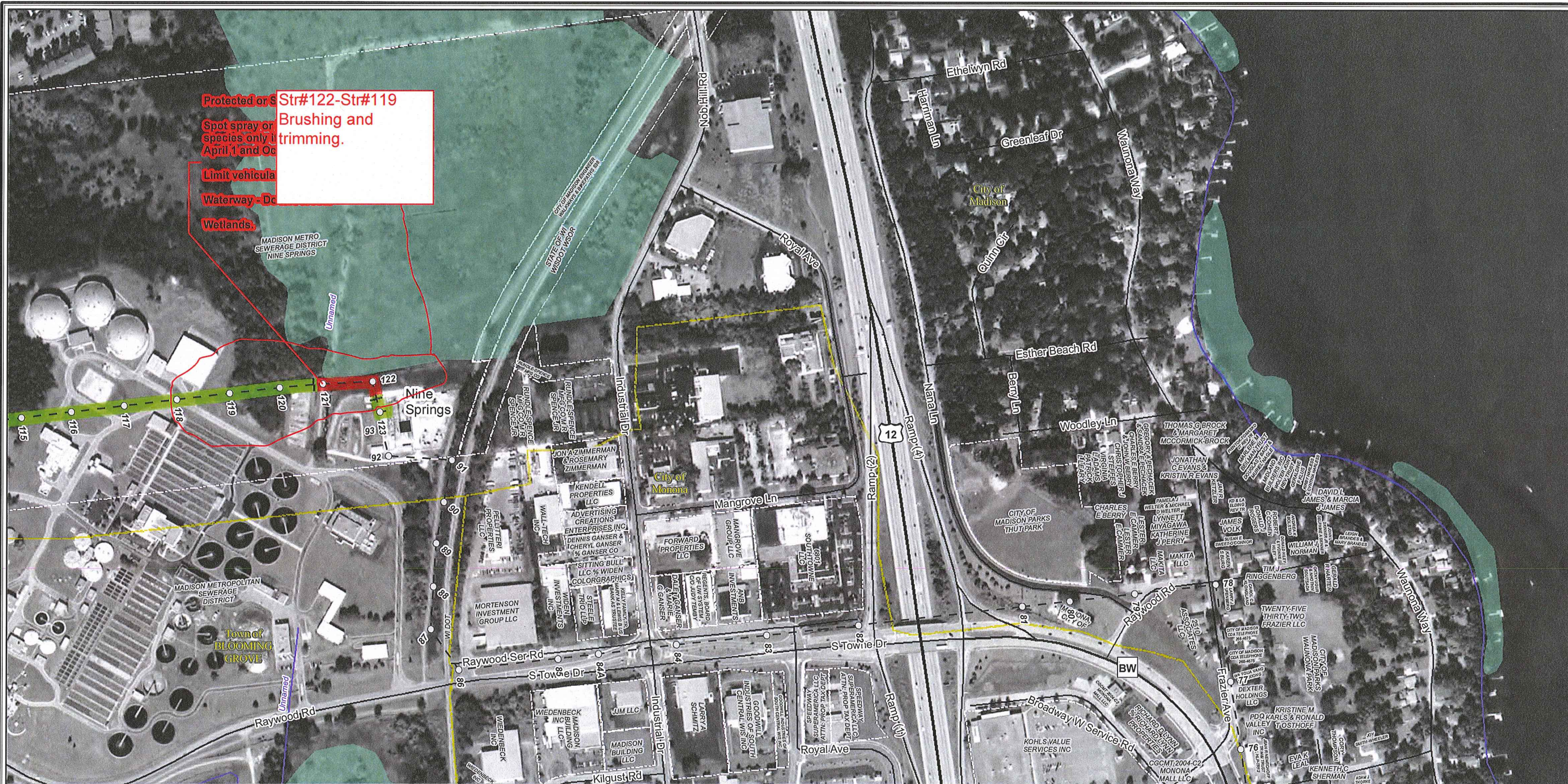
Access corridor noted on map is for display purposes only and may or may not coincide with the actual right-of-way.

6943: Fitchburg to Nine Springs
ENVIRONMENTAL SCREENING ACCESS PLAN

1 inch equals 400 feet

FEBRUARY 2012

Page 05 of 06



○ Existing Pole	MAINTENANCE ACCESS
■ Existing Substation	Clear Access
— Existing Transmission Line	Access with Caution <i>Environmental Considerations Noted on Map</i>
— WI/MI DNR Mapped Waterbodies	Restricted or Limited Access <i>Environmental Considerations Noted on Map</i>
Potential Wetland (WI - WWI) (MI - NWI)	Organic Product Handlers
Public Owned Lands	Organic Producers
Federal Owned Lands	Field Located Waterway
Parcel Boundary	Municipal Boundary
	Delineated Wetland

ENVIRONMENTAL CONSTRUCTION DATA CREATED FOR CARTOGRAPHIC PURPOSES ONLY.

Maps have been developed from a desktop review of available data. Actual field conditions may vary.

Additional waterways and wetlands not identified on these maps may be encountered in the field. Apply conservation measures as appropriate.

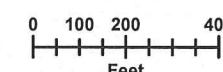
Access corridor noted on map is for display purposes only and may or may not coincide with the actual right-of-way.

6943: Fitchburg to Nine Springs

ENVIRONMENTAL SCREENING ACCESS PLAN



1 inch equals 400 feet



FEBRUARY 2012

