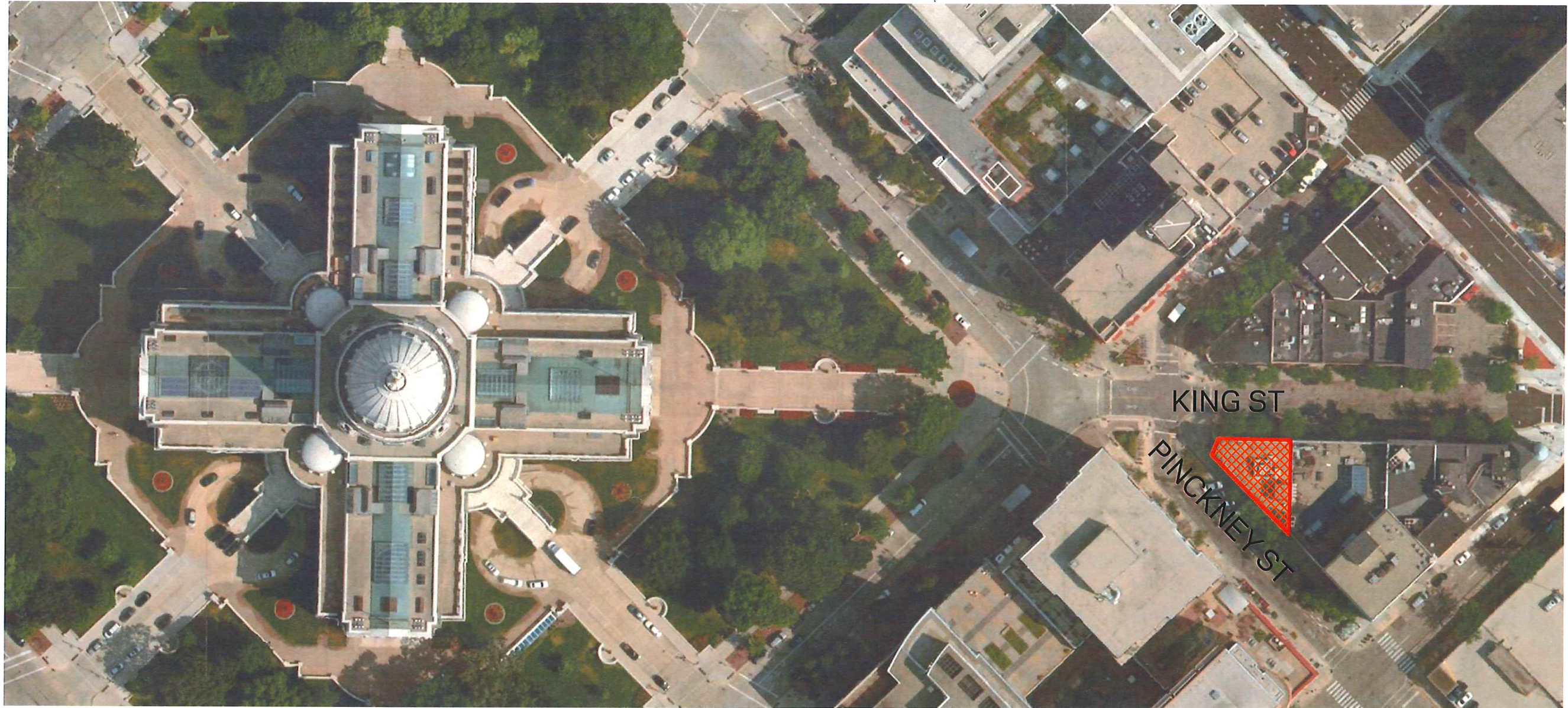


101 King

OUTLINE:

- I. PROJECT OVERVIEW
- II. EXISTING BUILDING
- III. INTERIOR IMPROVEMENTS
- IV. EXTERIOR IMPROVEMENTS
- V. ARCHITECTURAL ELEMENTS



BUILDING LOCATION

pg: 3_



EXISTING BUILDING

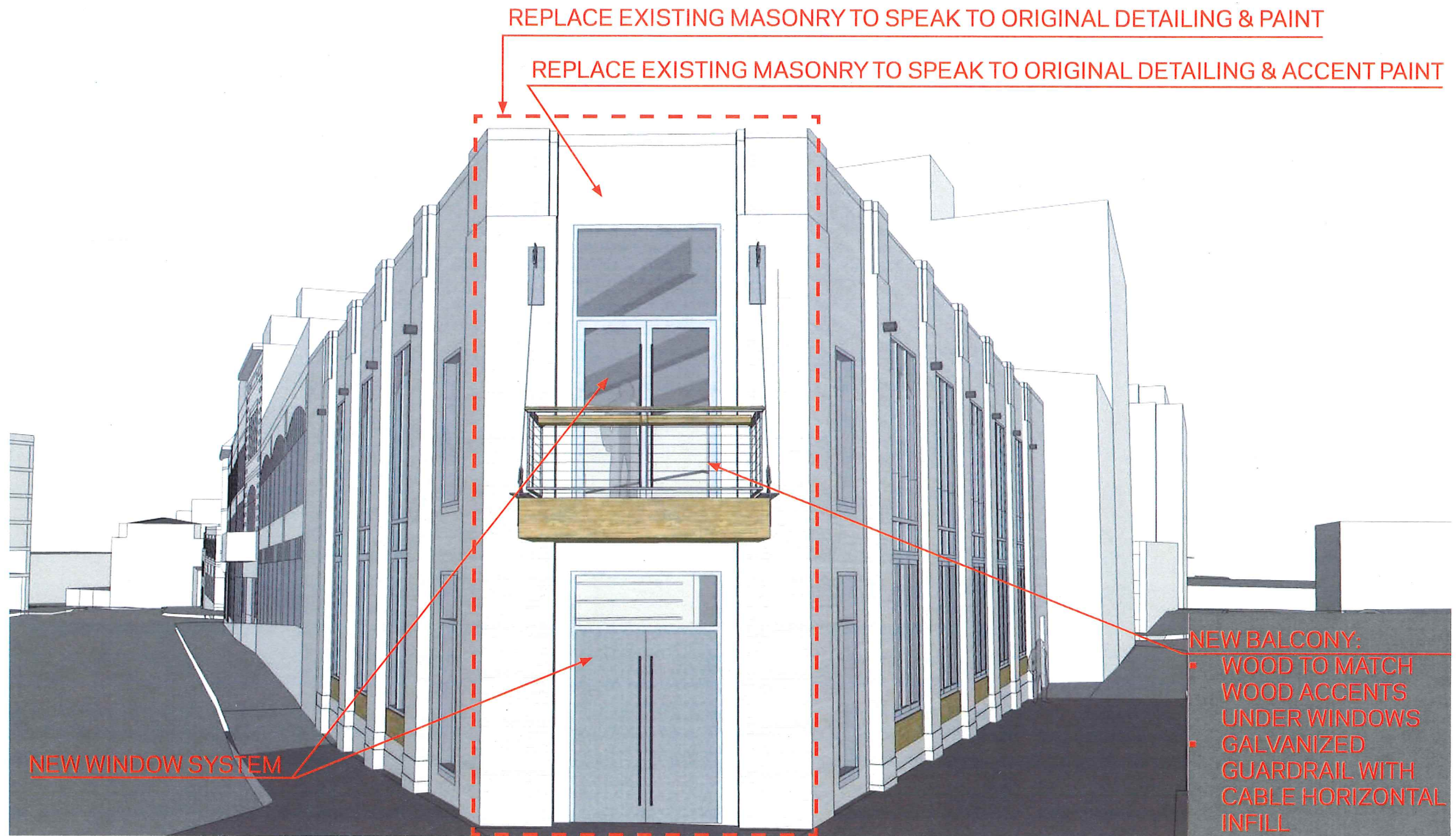


INTERIOR SPACE

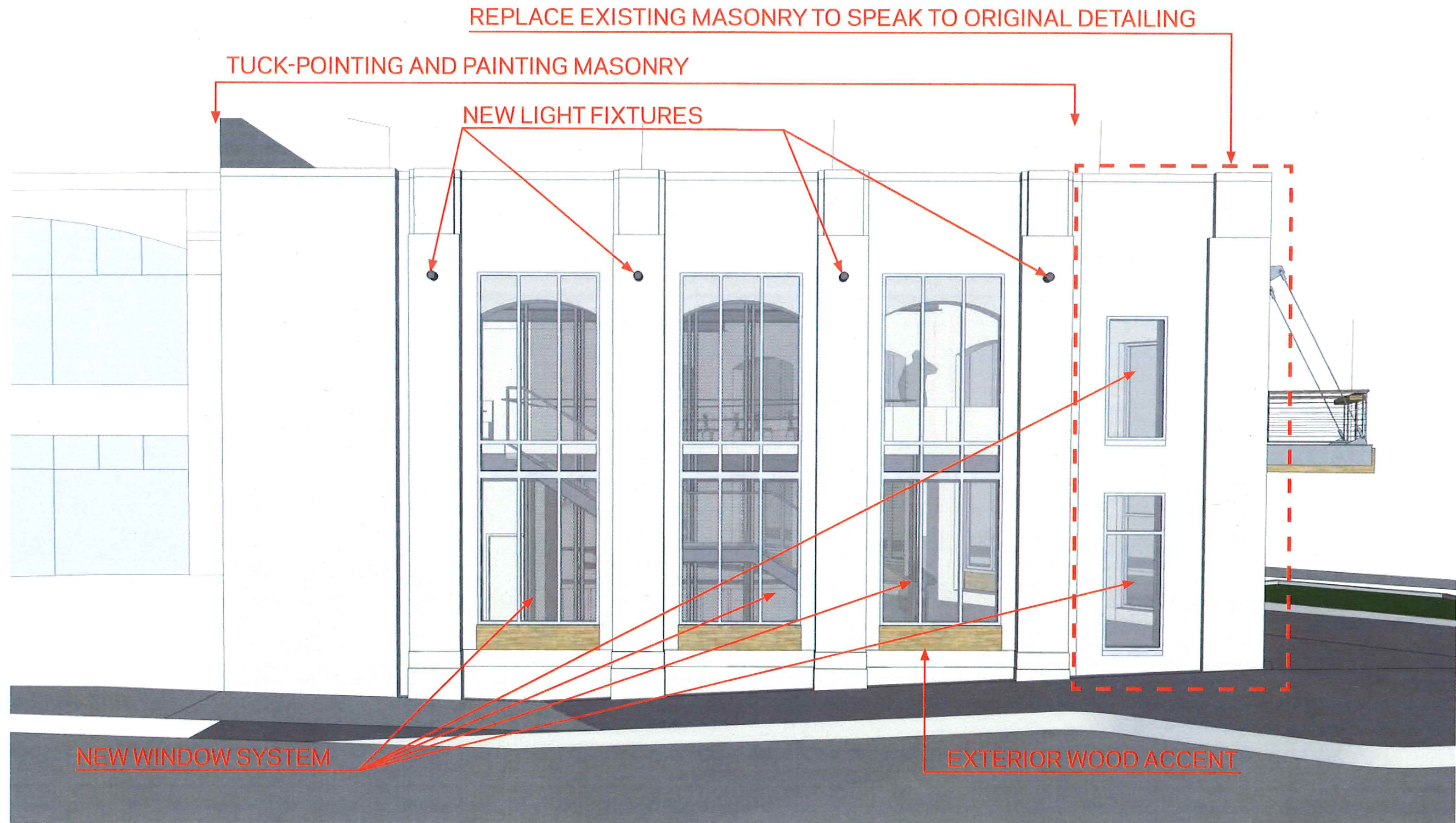




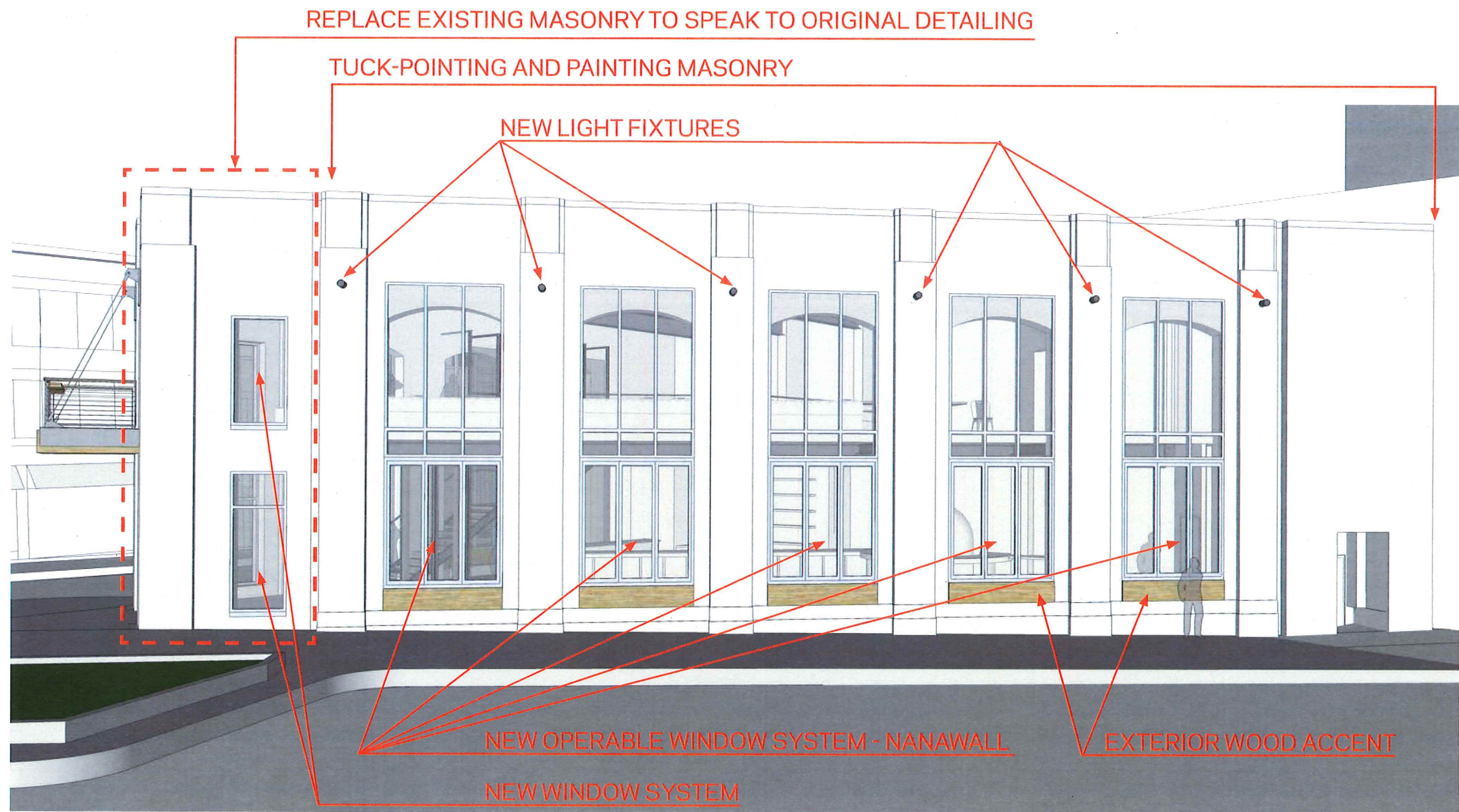
CONCEPTUAL INTERIOR MATERIALITY



CORNER ELEVATION



KING ST. ELEVATION



PINCKNEY ST. ELEVATION



CURRENT WINDOW SILL CONDITION



TUCKPOINTING NEEDED



TUCKPOINTING NEEDED

CURRENT CONDITIONS



MASONRY FAILING

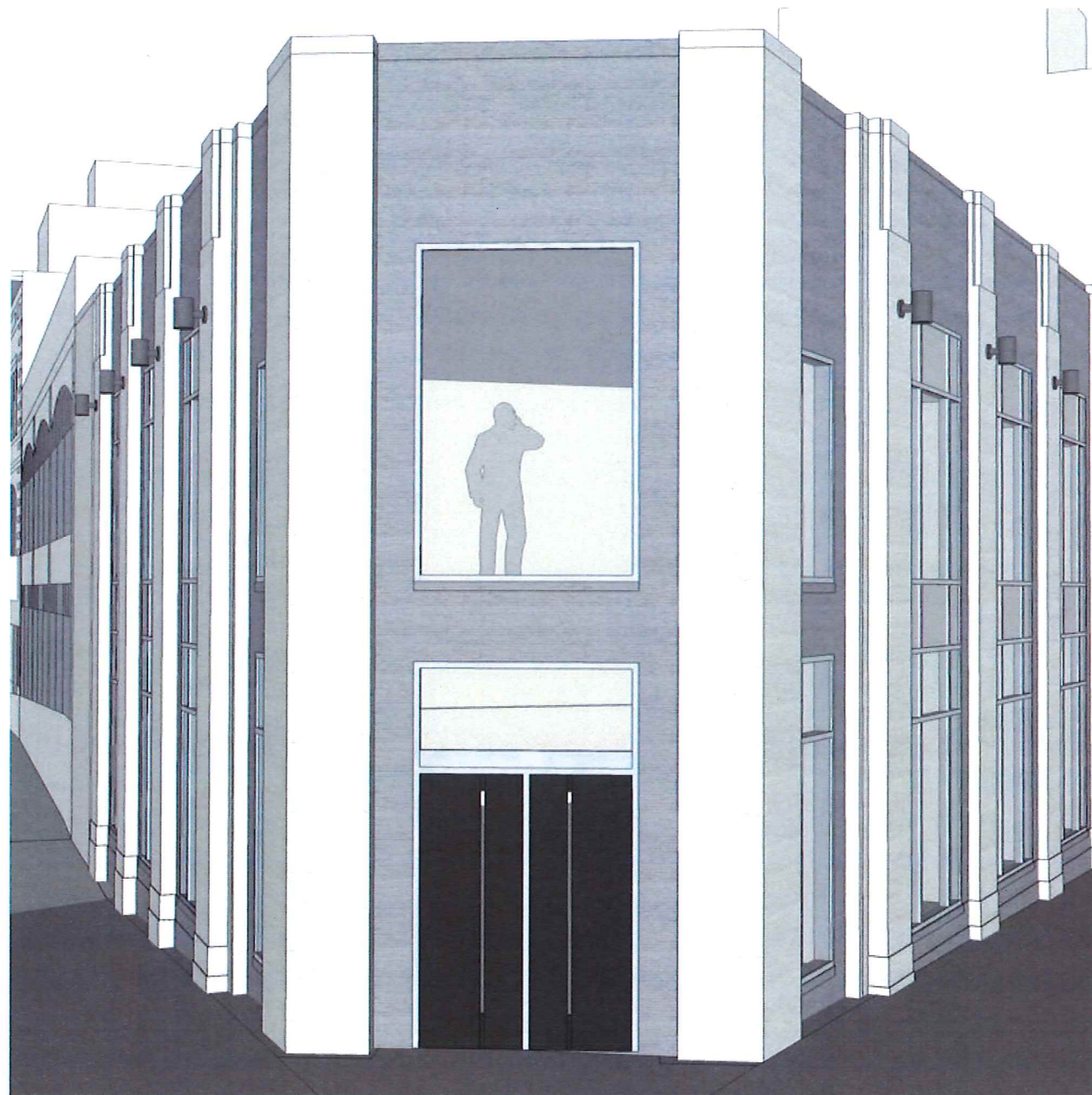


PINCKNEY STREET CORNER PERSPECTIVE

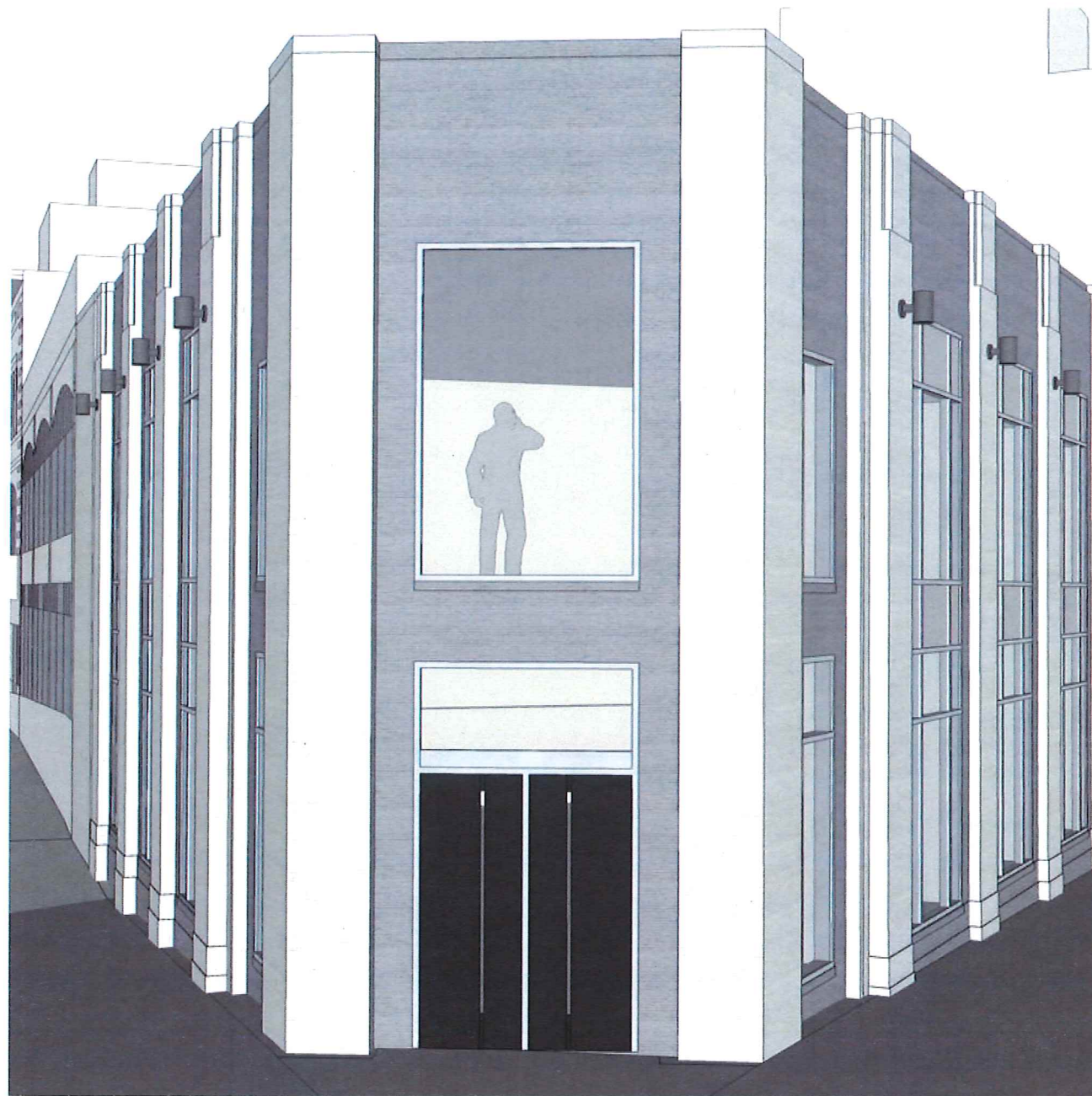




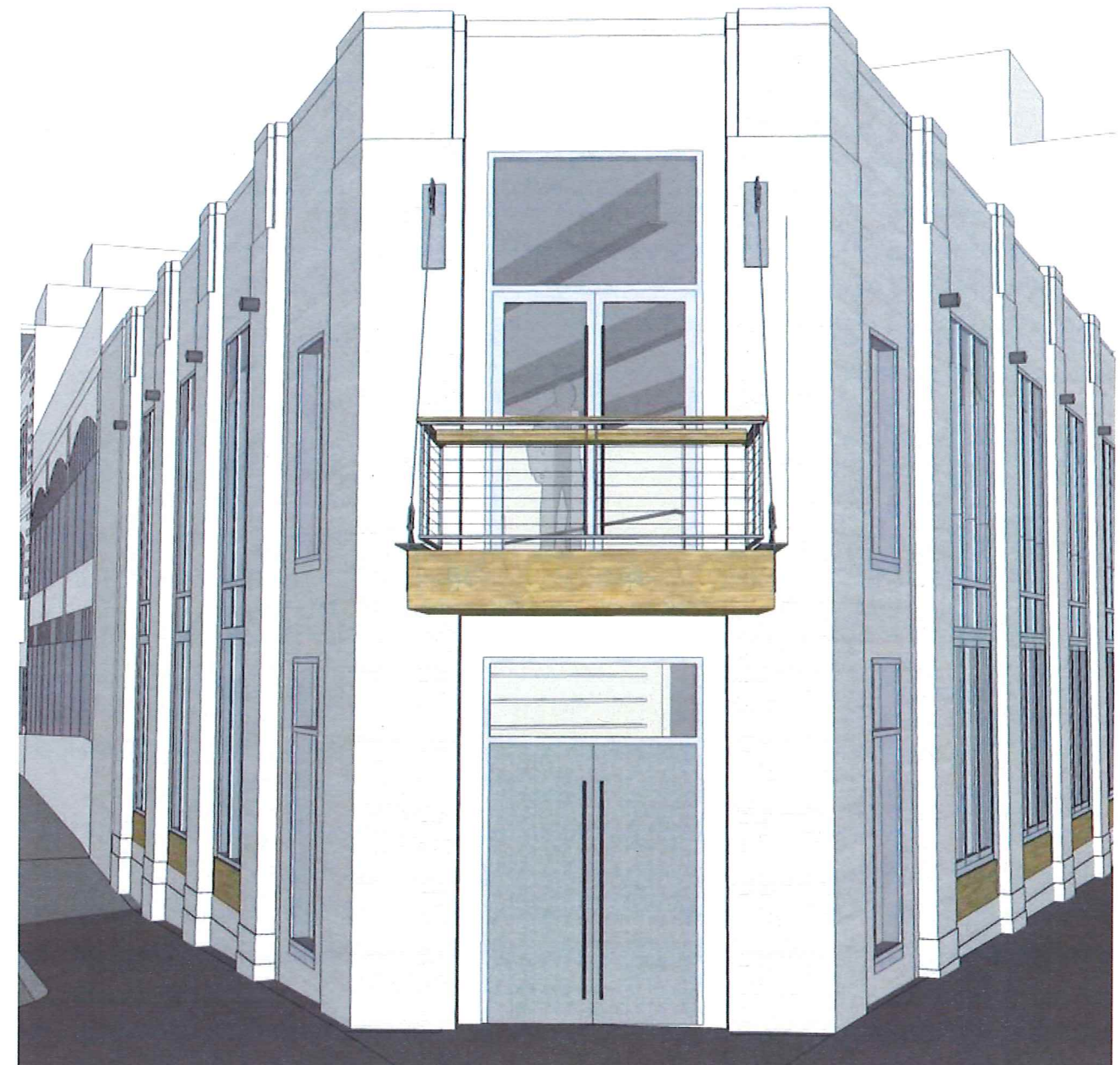
CORNER PERSPECTIVE



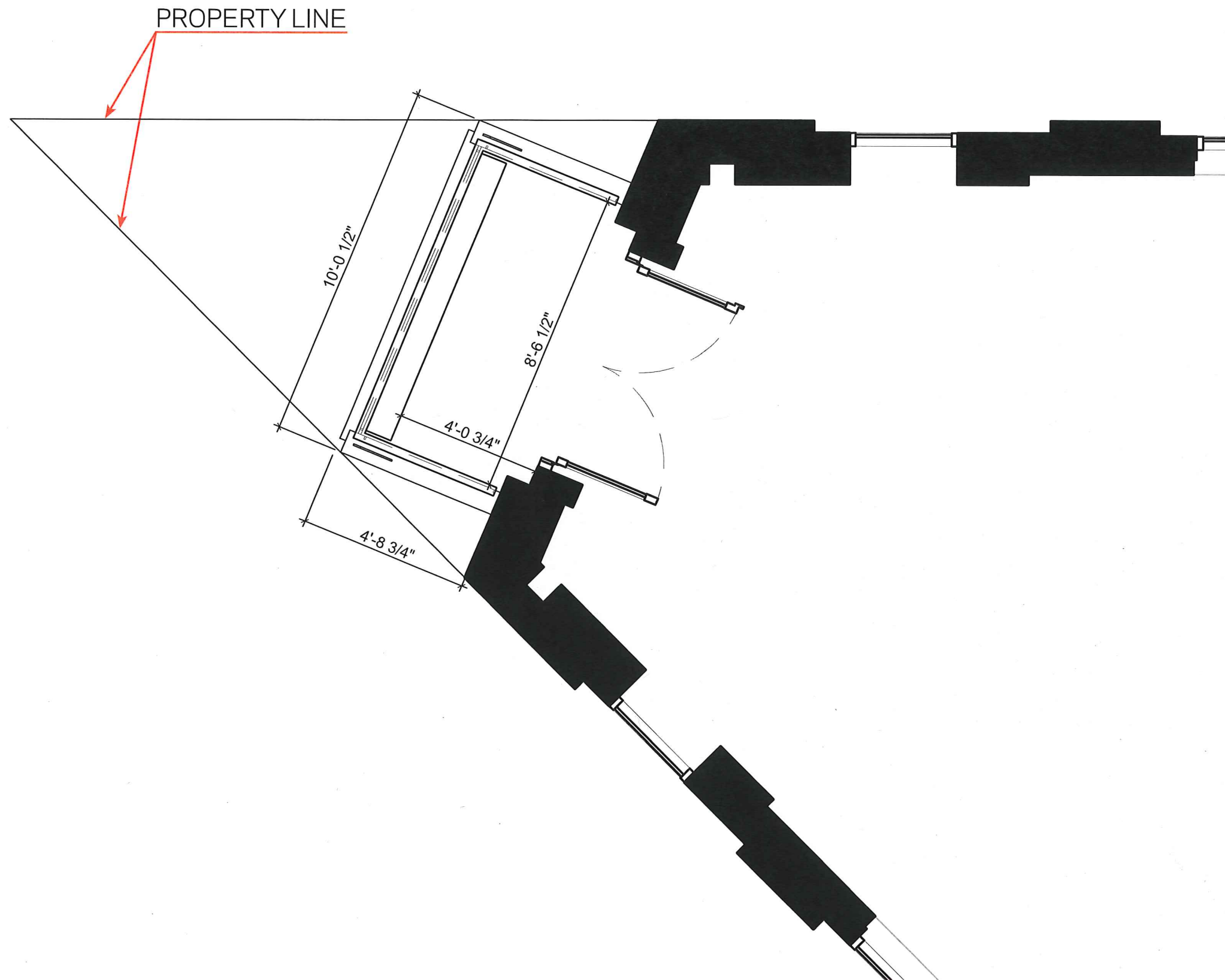
CORNER PERSPECTIVE - PREVIOUS SUBMISSION



CORNER PERSPECTIVE - PREVIOUS SUBMISSION



CORNER PERSPECTIVE - CURRENT DESIGN



PARTIAL FLOOR PLAN - PROPOSED BALCONY



FACADE TRANSPARENCY - PINCKNEY STREET



INTERIOR ARCHES

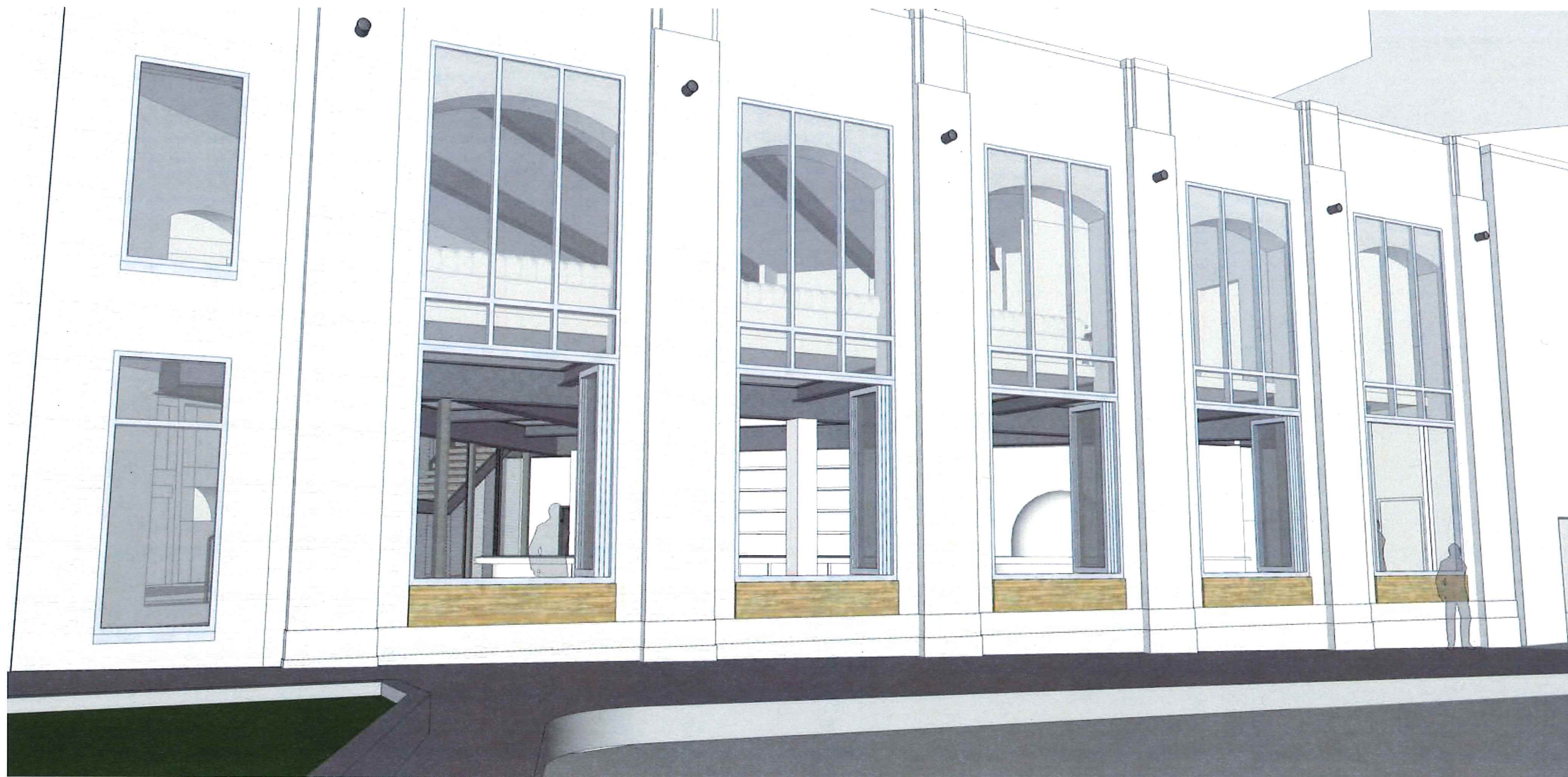
pg: 18_



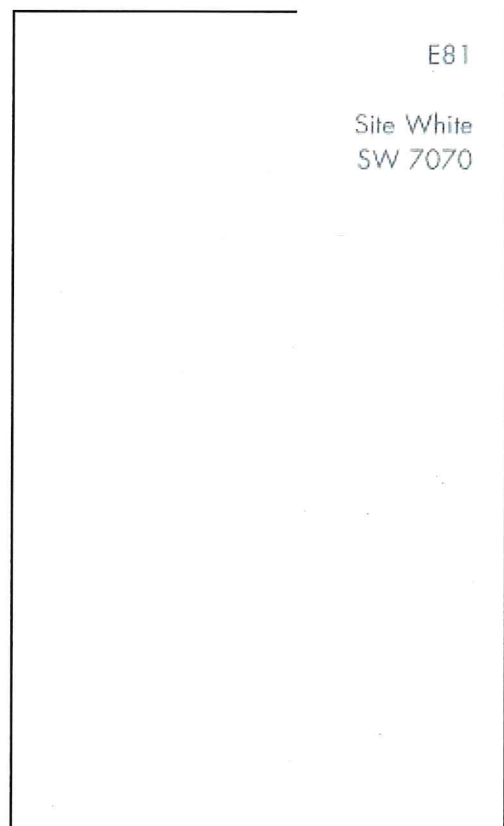
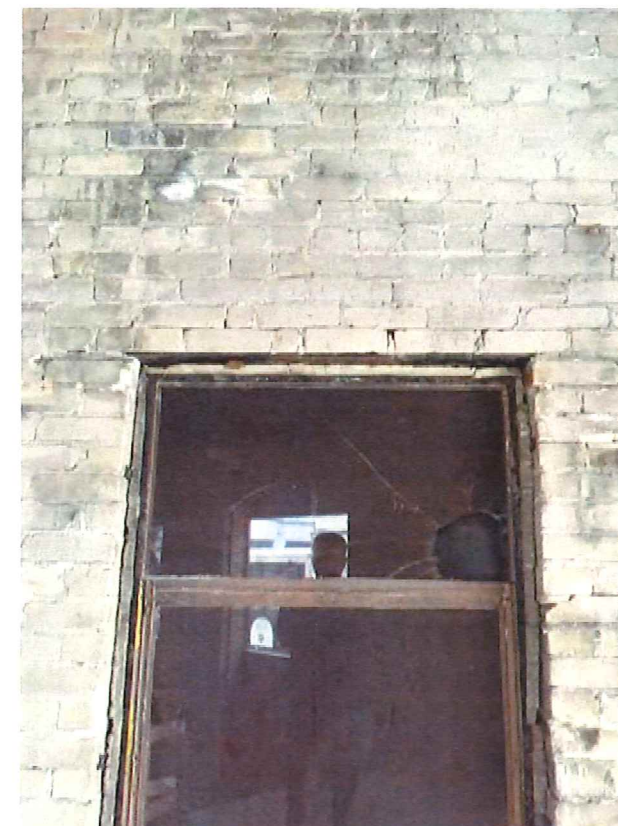
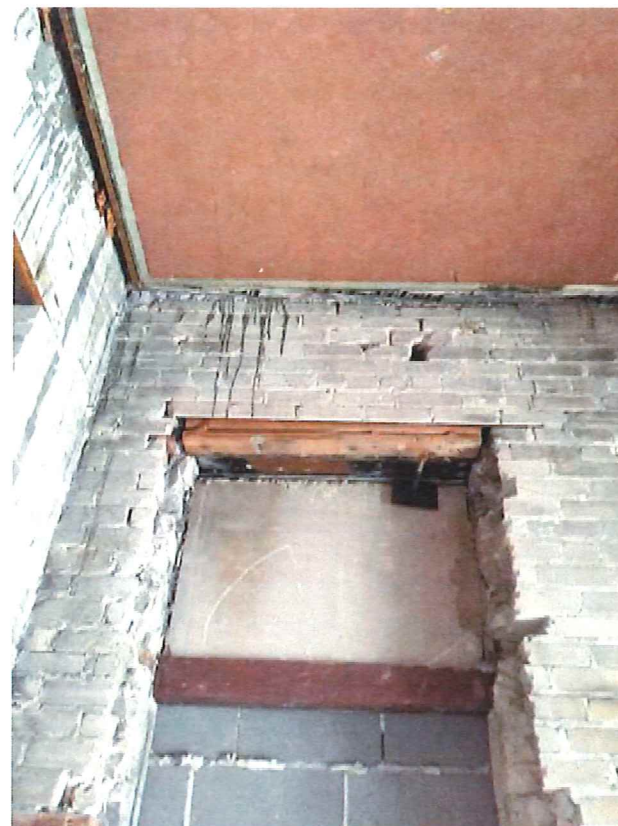
ARCADE BUILDING EXTERIOR



FACADE TRANSPARENCY - KING STREET

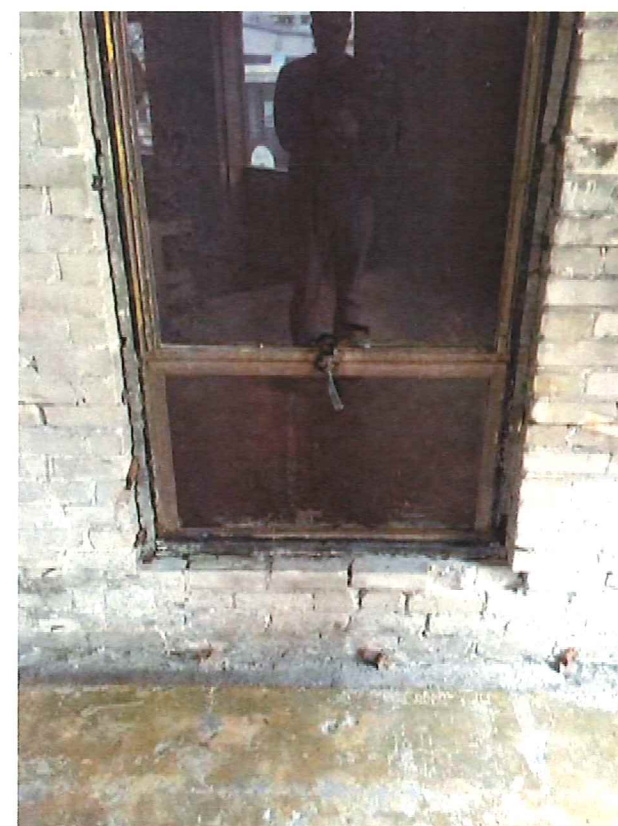


FACADE TRANSPARENCY - PINCKNEY STREET - NANAWALL OPEN



E81

Site White
SW 7070

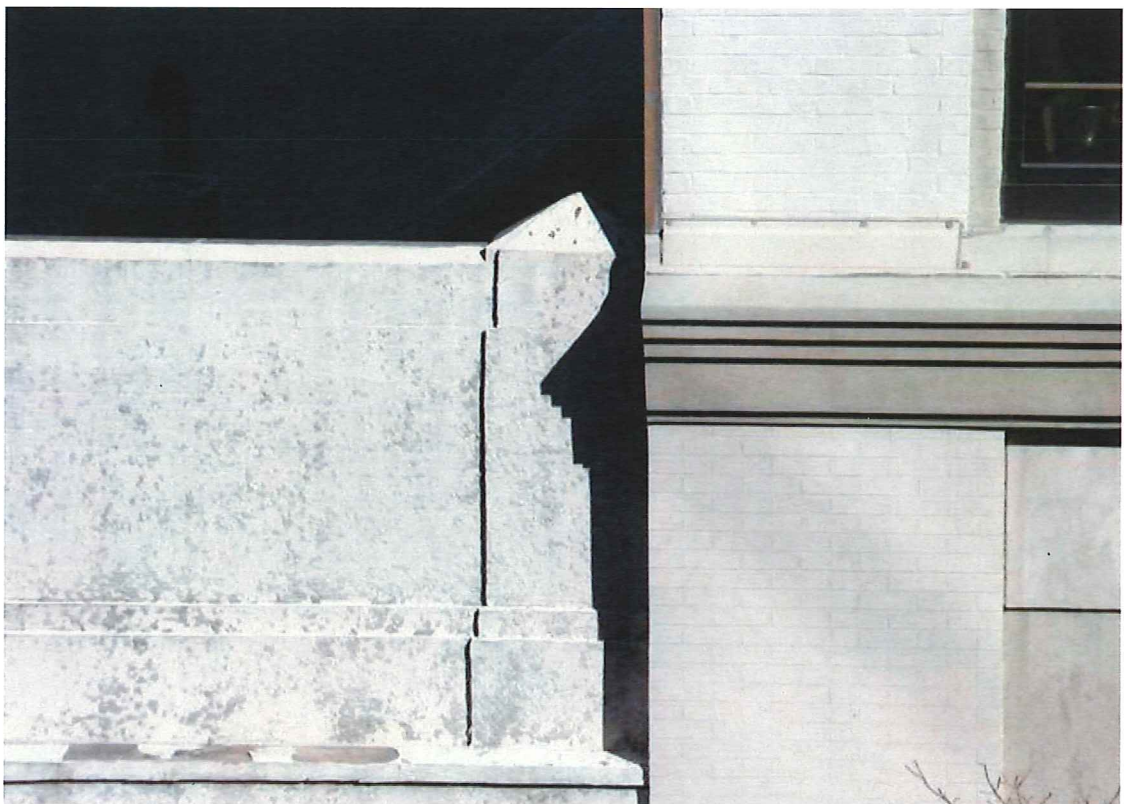


MATERIALITY OF 101 KING

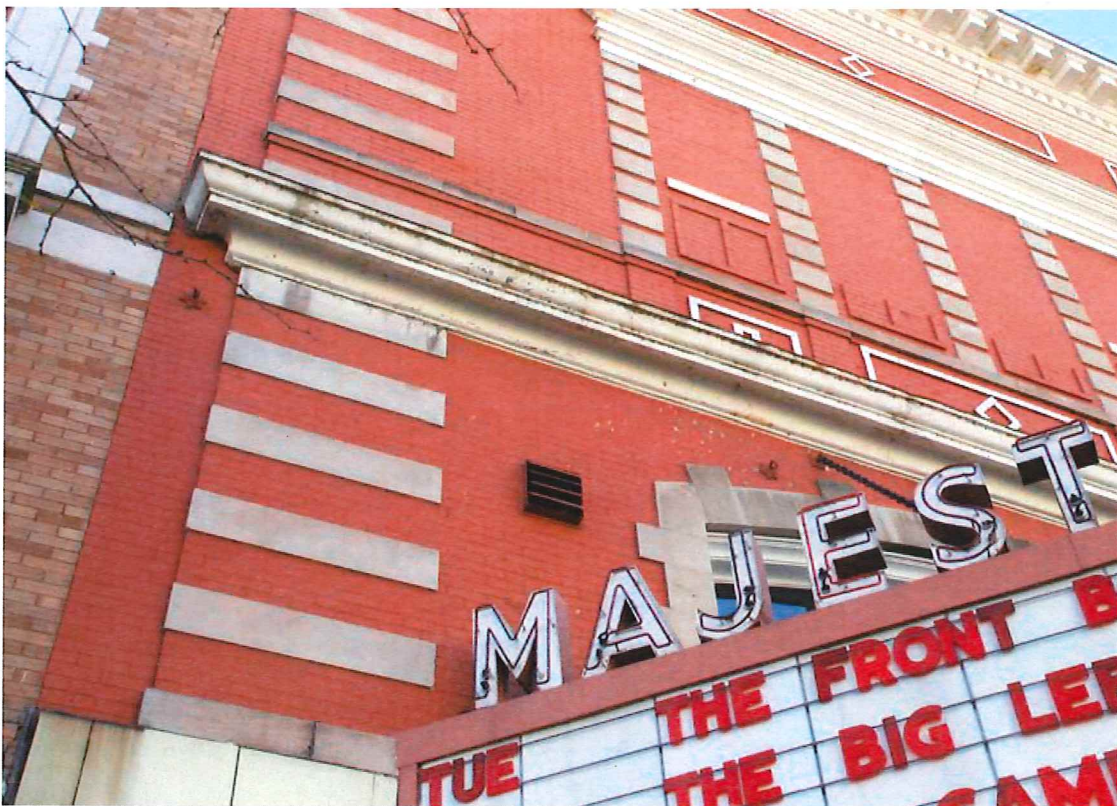
pg: 22_

Urban Land Interests **OPN**
ARCHITECTS

date: 11-04-2015

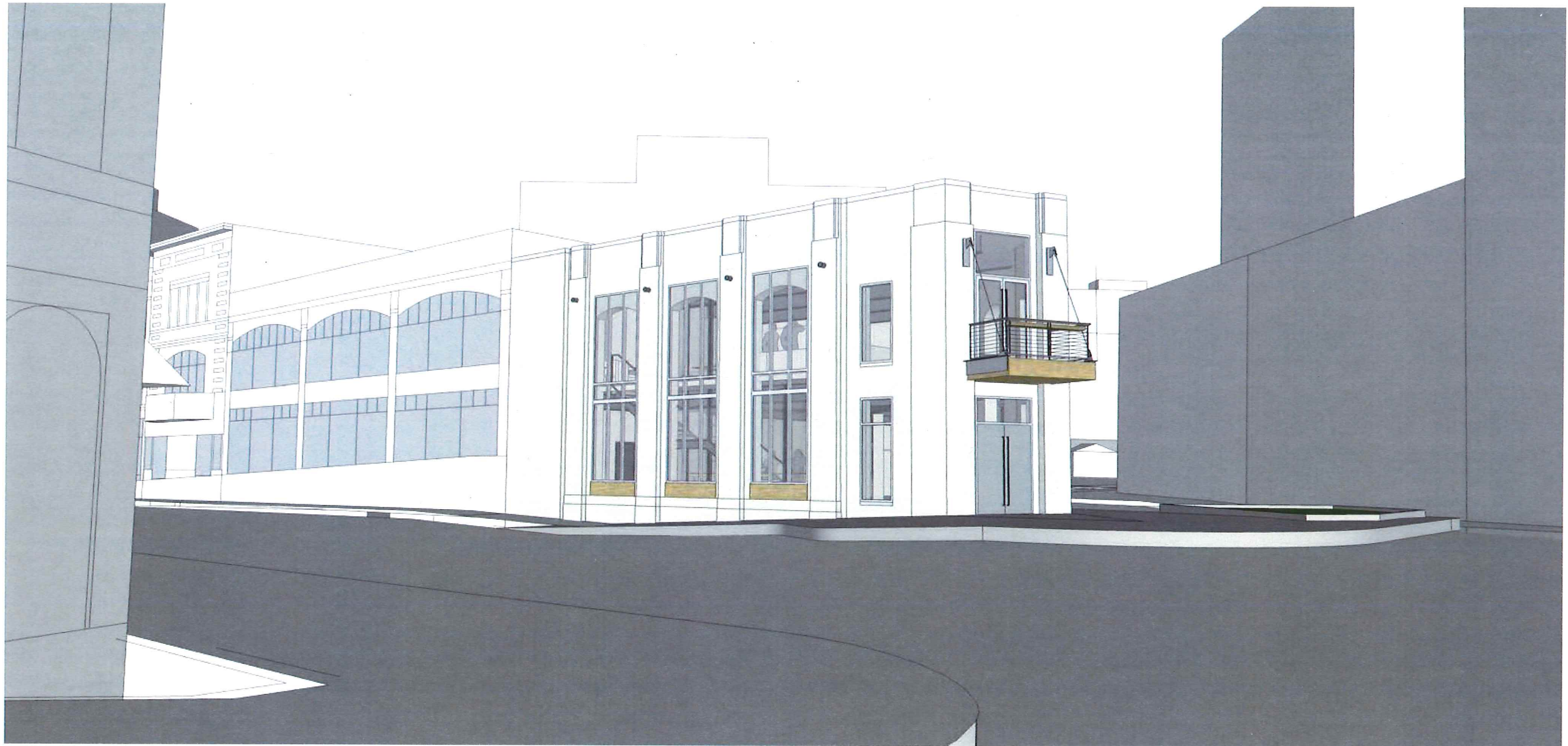


EXTERIOR MATERIALITY OF SURROUNDING BUILDINGS



EXTERIOR MATERIALITY OF SURROUNDING BUILDINGS





KING STREET CORNER PERSPECTIVE