

APPLICATION FOR
URBAN DESIGN COMMISSION
REVIEW AND APPROVAL

AGENDA ITEM # _____
Project # _____

	Action Requested
DATE SUBMITTED: <u>08/30/2011</u>	<input checked="" type="checkbox"/> Informational Presentation
UDC MEETING DATE: <u>09/07/2011</u>	<input type="checkbox"/> Initial Approval and/or Recommendation
	<input type="checkbox"/> Final Approval and/or Recommendation

PROJECT ADDRESS: 723 State Street, Madison

ALDERMANIC DISTRICT: 8

OWNER/DEVELOPER (Partners and/or Principals) ARCHITECT/DESIGNER/OR AGENT:

St. Paul's University Catholic Center

RDG Planning & Design

723 State Street, Madison, WI 53703

900 Farnam on the Mall, Suite 100, Omaha, NE

Fr. Eric Nielsen

Randall Milbrath, AIA, Partner

CONTACT PERSON: Robert Shipley, AIA, BWZ Architects

Address: 2211 Parmenter St., Middleton, WI 53562

Phone: 608 831 2900

Fax: 609 831 5800

E-mail address: bshipley@bwzarchitects.com

TYPE OF PROJECT:

(See Section A for:)

- ☒ Planned Unit Development (PUD)
☒ General Development Plan (GDP)
☒ Specific Implementation Plan (SIP)
☐ Planned Community Development (PCD)
☐ General Development Plan (GDP)
☐ Specific Implementation Plan (SIP)
☐ Planned Residential Development (PRD)
☐ New Construction or Exterior Remodeling in an Urban Design District * (A public hearing is required as well as a fee)
☐ School, Public Building or Space (Fee may be required)
☐ New Construction or Addition to or Remodeling of a Retail, Hotel or Motel Building Exceeding 40,000 Sq. Ft.
☐ Planned Commercial Site

(See Section B for:)

- ☐ New Construction or Exterior Remodeling in C4 District (Fee required)

(See Section C for:)

- ☐ R.P.S.M. Parking Variance (Fee required)

(See Section D for:)

- ☐ Comprehensive Design Review* (Fee required)
☐ Street Graphics Variance* (Fee required)
☐ Other _____

*Public Hearing Required (Submission Deadline 3 Weeks in Advance of Meeting Date)

Where fees are required (as noted above) they apply with the first submittal for either initial or final approval of a project.

BWZ

August ~~830~~, 2011

Attn: ~~AI Martin~~
Staff to the Urban Design Commission
Department of Planning and Community & Economic Development
City of Madison
215 Martin Luther King Jr. Blvd.
Madison, WI 53701
Attn: ~~Amy Scanlon~~
Secretary of the Landmarks Commission
Department of Planning and Community & Economic Development
City of Madison
215 Martin Luther King Jr. Blvd.
Madison, WI 53701

Re: St. Paul University Catholic Center
723 State Street, Madison, WI 53706

Dear ~~Amy Scanlon~~~~AI Martin~~,

On behalf of St. Paul's University Catholic Center, we submit a request ~~for review~~~~for the opportunity~~ of an informational presentation to the ~~Landmarks Urban Design~~ Commission at the Commission's meeting on ~~September 7~~~~August 22~~, 2011. We have included ~~twelve~~~~fourteen~~ copies of rendered plans, elevations, and perspectives for the Commission's consideration. A description of the general purpose and intent of the project follows.

St. Paul University Catholic Center

St. Paul's University Catholic Center, ~~which has been~~ a major presence at the University of Wisconsin-Madison for more than 100 years, plans to build a ~~new, modern college~~~~church/student center~~ facility on the UW campus. The proposed St. Paul University Catholic Center will enable St. Paul's's to better serve the university and ~~campus~~~~greater Madison~~ community.

- The new facility will serve as a center of student life on campus, blending faith, community and academic aspects of the university experience.
- The proposed facility is 6 stories tall. Features, based on feedback from students, City Agencies, and the community, include:
 - A ~~400 to 600~~~~450~~-seat multilevel chapel incorporating reclaimed elements of original 1909 chapel
 - A student center with private study space, small- and large-group gathering space, ~~and~~ music rooms ~~and offices~~
 - Office, ~~space, including~~ conference, ~~and~~ work, ~~rooms~~ ~~and library facilities~~
 - Dining/~~multi-purpose~~ hall

BWZ Architects
2211 Parmenter Street
Middleton, Wisconsin 53562
V 608.831.2900, F 608.831.5800

- Residential space for [resident](#) priests, [priests in training](#) and visiting scholars
- [Exterior patios over looking State Street and the interior of the block](#)
- ~~Cost~~ [The cost](#) of the new facility is estimated at \$25 million and is expected to ~~come be raised~~ from a small group of benefactors who have long supported ~~projects like this~~ [joint church/student center projects](#). Groundbreaking is ~~anticipating~~ [anticipated](#) in the next two to three years.

Formatted: Indent: Left: 0"

St. Paul's Ministry

- St. Paul's is the birthplace of the campus Catholic ministry in the United States. UW's Catholic campus ministry was formed in 1883, and graduates who were part of this group started the "Newman Movement," designed to serve Catholics on college campuses. [The initial](#) St. Paul's Chapel was built in 1909, the first Catholic chapel built specifically to serve students at a public university. The chapel and student center were renovated in 1967, with a contemporary concrete expression.
- Student involvement in St. Paul's has grown significantly over the past 10 years and ~~is way beyond~~ [has far exceeded](#) the ability of the existing facility to meet these [present and](#) expanding needs. The current facility, parts of which date back to the late 1800s, is severely outdated, ~~extremely~~ cramped and in need of major upgrades.
- St. Paul's serves thousands of UW students annually. Approximately 1,000 students attend Sunday Mass, and hundreds are actively involved in other St. Paul programs – ranging from small group sessions to national service projects. Additionally, St. Paul's hosts dances, a theater arts program, a speaker series and concerts designed to appeal to all students and community members, extending the university's reach beyond its campus borders. [The new facility will allow for expansion of those programs together with augmented educational programs.](#)

Architectural Expression

- The proposed building design represents a "new classicism", combining traditional Catholic forms and symbolism with a modern energy. It complements the surrounding university buildings, which mix both traditional and contemporary styles of architecture. The State Street church façade acknowledges the scale and character of the adjacent Pres House Church while the façade above steps back to maintain the scenic, uninterrupted views between Bascom Hill and the Capitol Square. [The height, mass and style and detail make an architectural and institutional statement without being over imposing.](#)
- Proposed materials include predominately face brick with natural and cast stone spandrels and trim elements.

Please call or email with any questions regarding this submittal. We look forward to meeting with you and members of the Commission at the ~~August 22nd~~ [September 7th](#) meeting to present the new St. Paul University Catholic Center.

Sincerely,



Robert Shipley
BWZ Architects

An Informational Presentation
To The City of Madison Urban Design Commission
September 7, 2011



St. Paul University Catholic Center

St. Paul University Catholic Center

St. Paul University Catholic Center, a major presence at the University of Wisconsin-Madison for more than 100 years, plans to build a new, modern college facility on the UW campus. The proposed St. Paul University Catholic Center will enable St. Paul's to better serve the university and campus community.

- The new facility will serve as a center of student life on campus, blending residential, faith, community and academic aspects of the university experience.
- The proposed facility is 6 stories tall. Features, based on feedback from students, the City of Madison, and the community, include:
 - A 450-seat multilevel chapel incorporating reclaimed elements of original 1909 chapel
 - A student center with private study space, small- and large-group gathering space, music rooms and offices
 - Office space, including conference and work rooms
 - Dining hall
 - Residential space for priests and visiting scholars
 - Exterior patios overlooking State Street and the interior of the block
- Cost of the new facility is estimated at \$25 million and is expected to come from a small group of benefactors who have long supported projects like this. Groundbreaking is anticipated in the next two to three years.

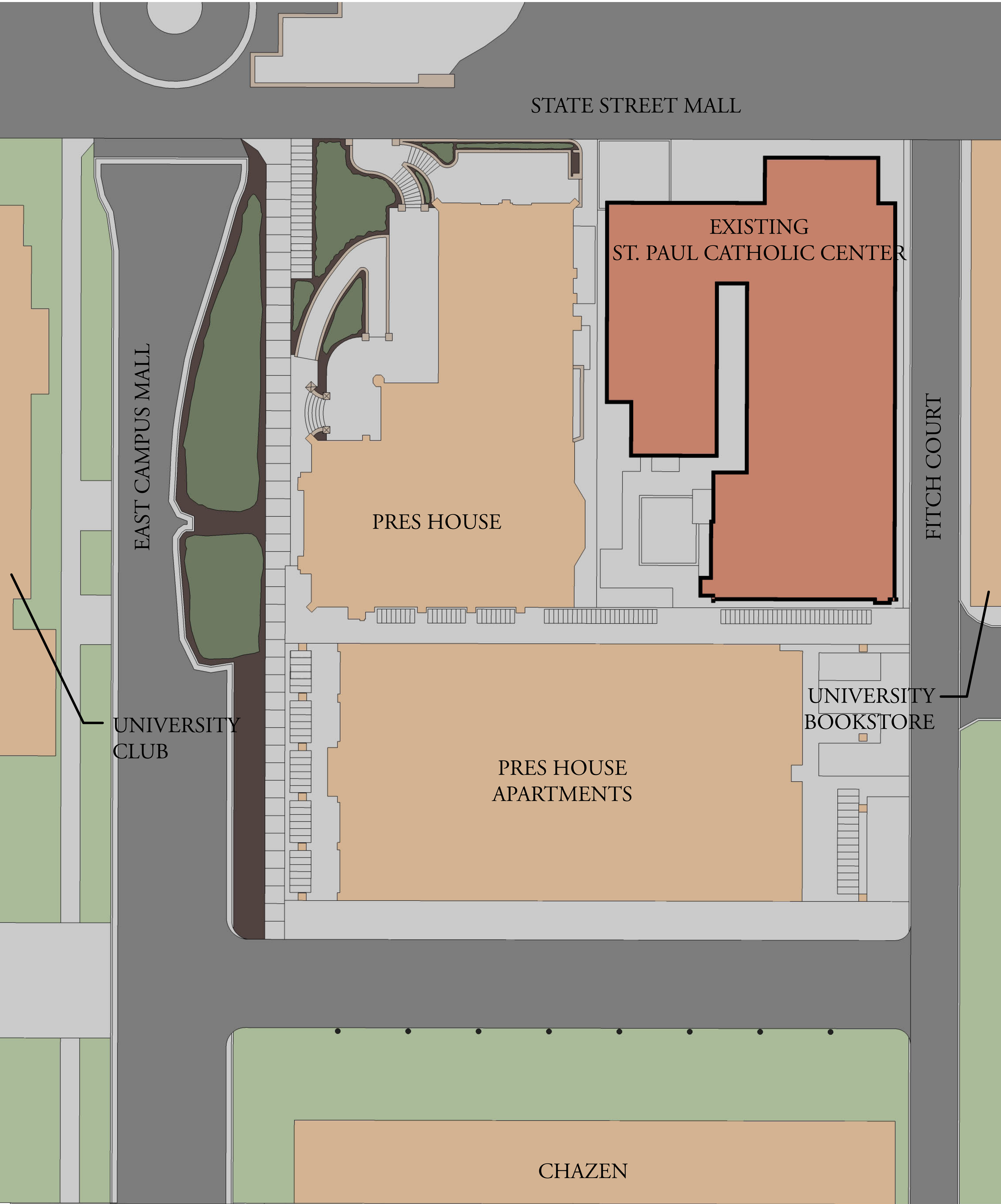
St. Paul's Ministry

- St. Paul's is the birthplace of the campus Catholic ministry in the United States. UW's Catholic campus ministry was formed in 1883, and graduates who were part of this group started the "Newman Movement," designed to serve Catholics on college campuses. St. Paul's Chapel was built in 1909, the first Catholic chapel built specifically to serve students at a public university. The chapel and student center were renovated in 1967, with a contemporary concrete expression.
- Student involvement in St. Paul's has grown significantly over the past 10 years and is way beyond the ability of the existing facility to meet these expanding needs. The current facility, parts of which date back to the late 1800s, is severely outdated, extremely cramped and in need of major upgrades.
- St. Paul's serves thousands of UW students annually. Approximately 1,000 students attend Sunday Mass, and hundreds are actively involved in other St. Paul programs – ranging from small group sessions to national service projects. Additionally, St. Paul's hosts dances, a theater arts program, a speaker series and concerts designed to appeal to all students and community members, extending the university's reach beyond its campus borders. The new facility will allow for expansion of those programs together with augmented educational programs.

St. Paul's Architectural Expression

- The proposed building design represents a "new classicism", combining traditional Catholic forms and symbolism with a modern energy. It complements the surrounding university buildings, which mix both traditional and contemporary styles of architecture. The State Street church façade acknowledges the scale and character of the adjacent Pres House Church while the façade above steps back to maintain the scenic, uninterrupted views between Bascom Hill and the Capitol Square. The height, mass, style, and detail make an architectural and institutional statement without being over imposing.
- Proposed materials include predominately face brick with natural and cast stone spandrels and trim elements.

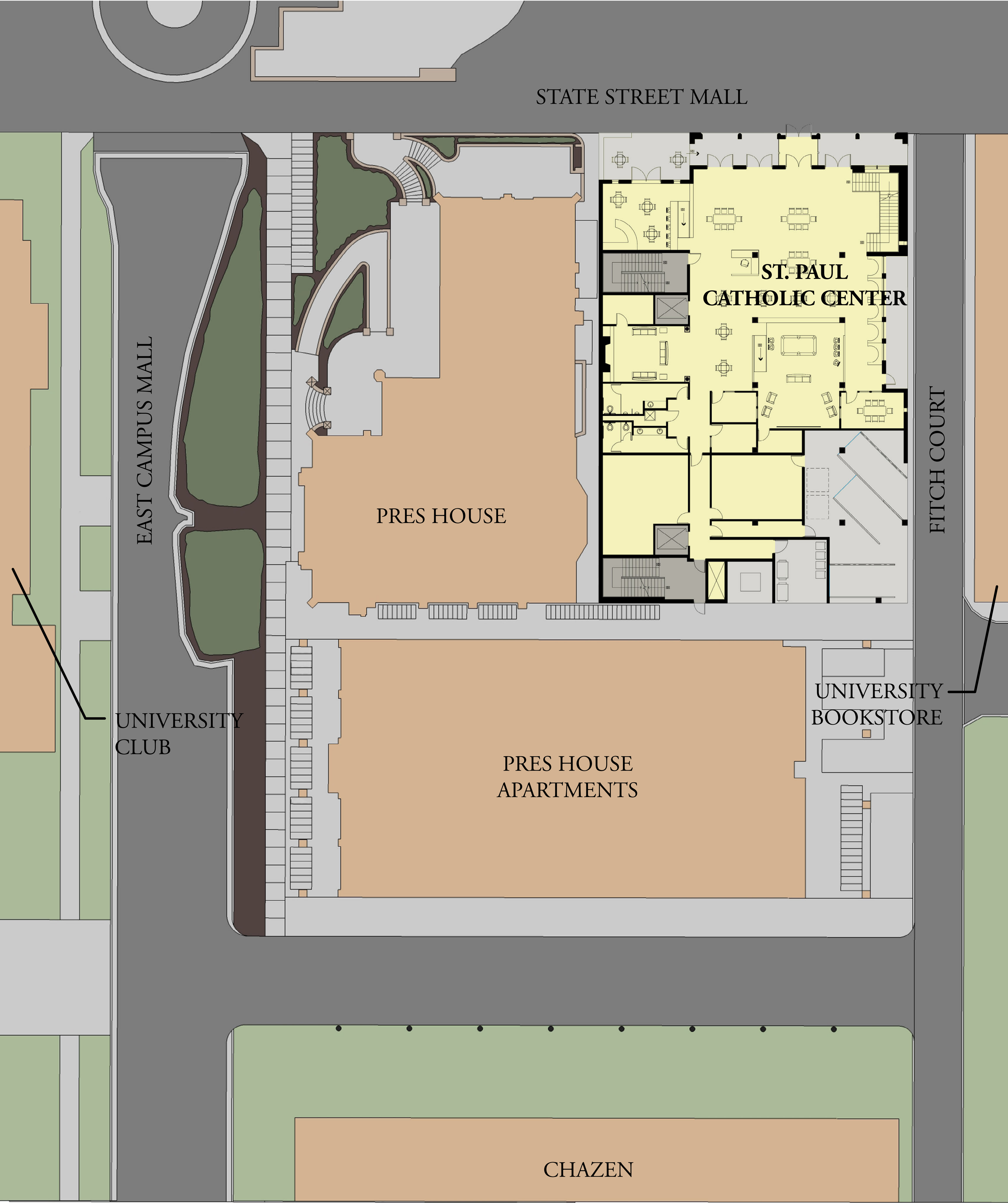




ST. PAUL University Catholic Center

Existing Site Plan

July 15, 2011



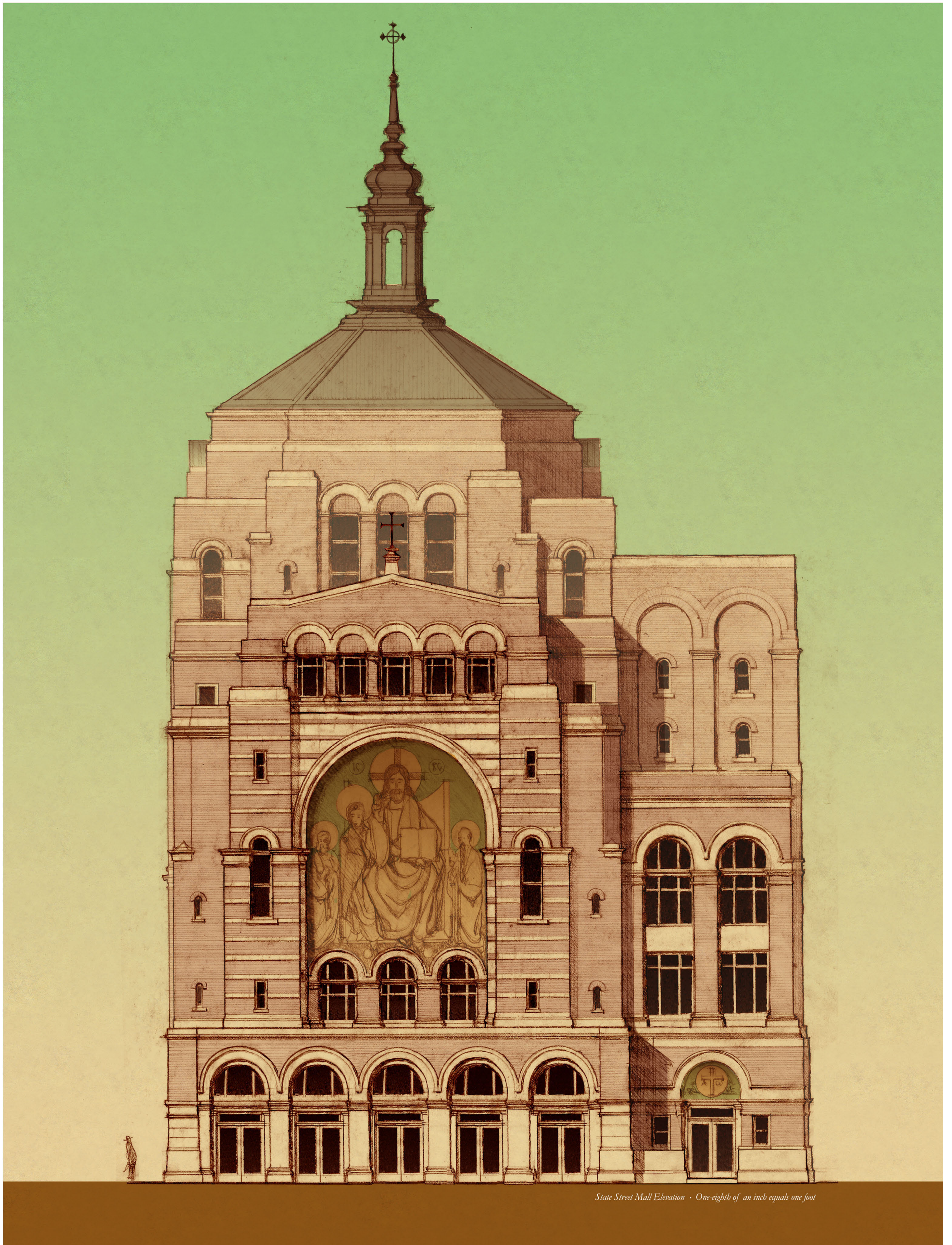
ST. PAUL University Catholic Center

Site Plan

July 15, 2011



View from Library Mall



State Street Mall Elevation • One-eighth of an inch equals one foot



Fitch Court Elevation - One-eighth of an inch equals one foot

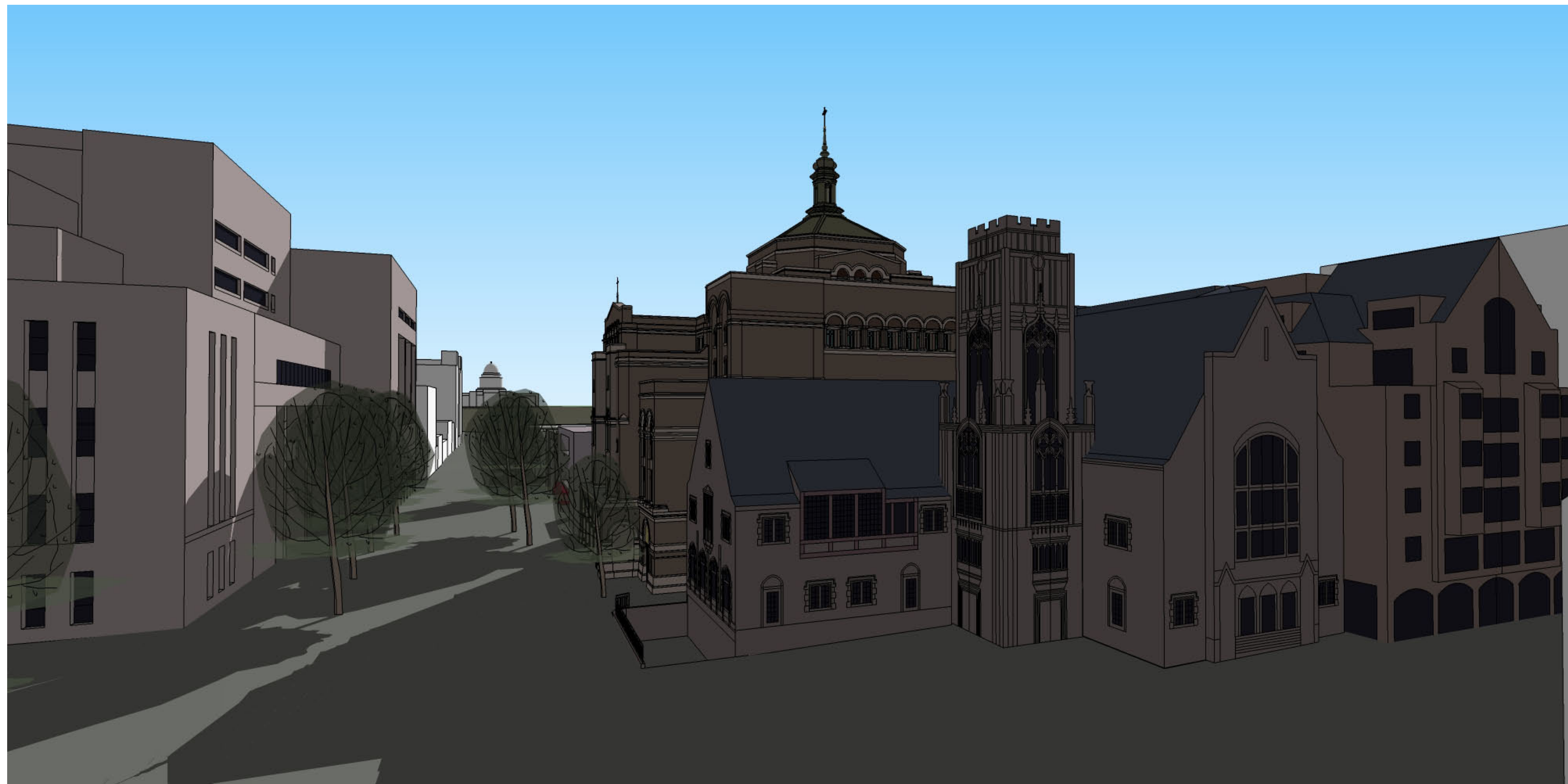




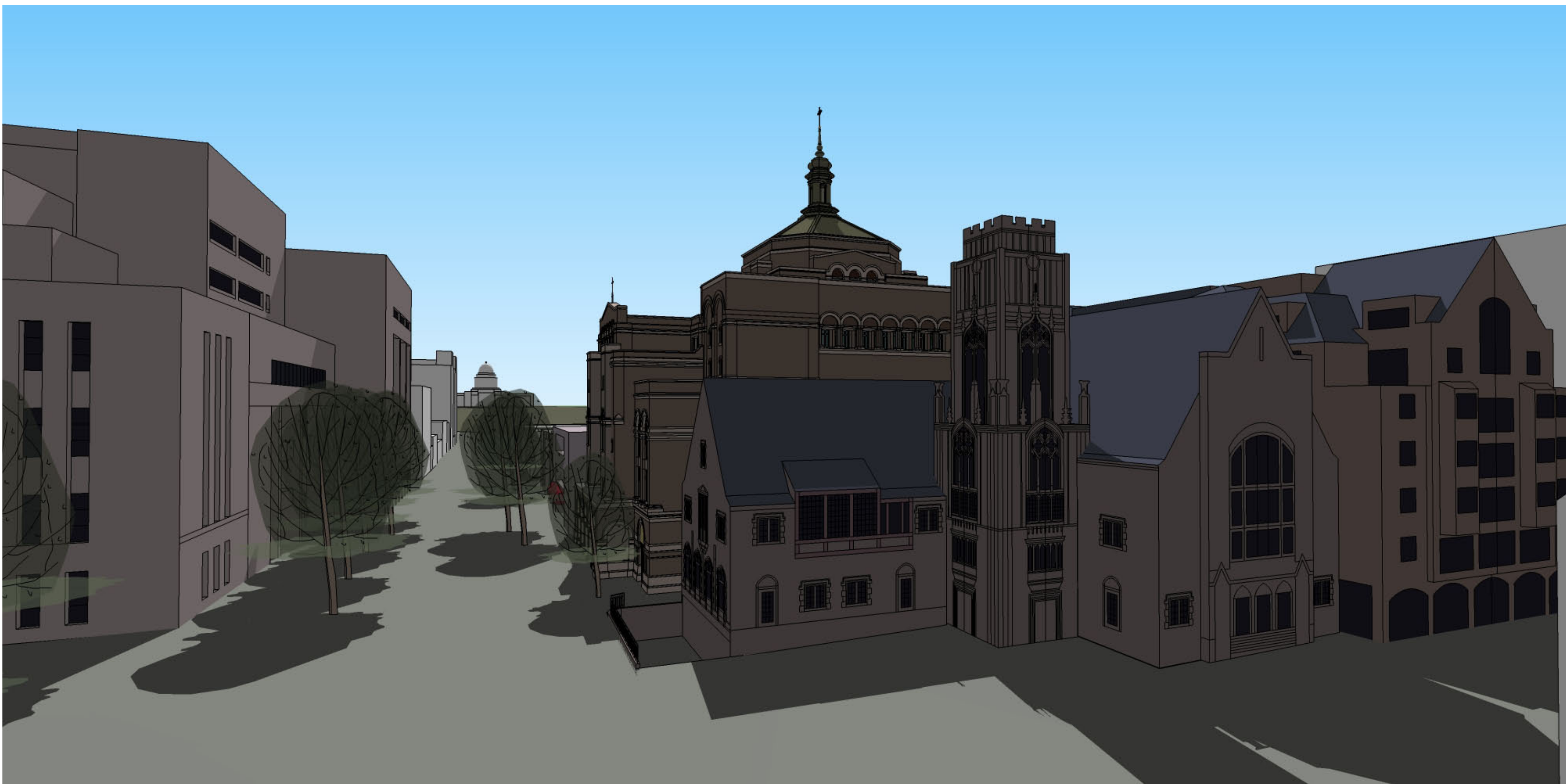




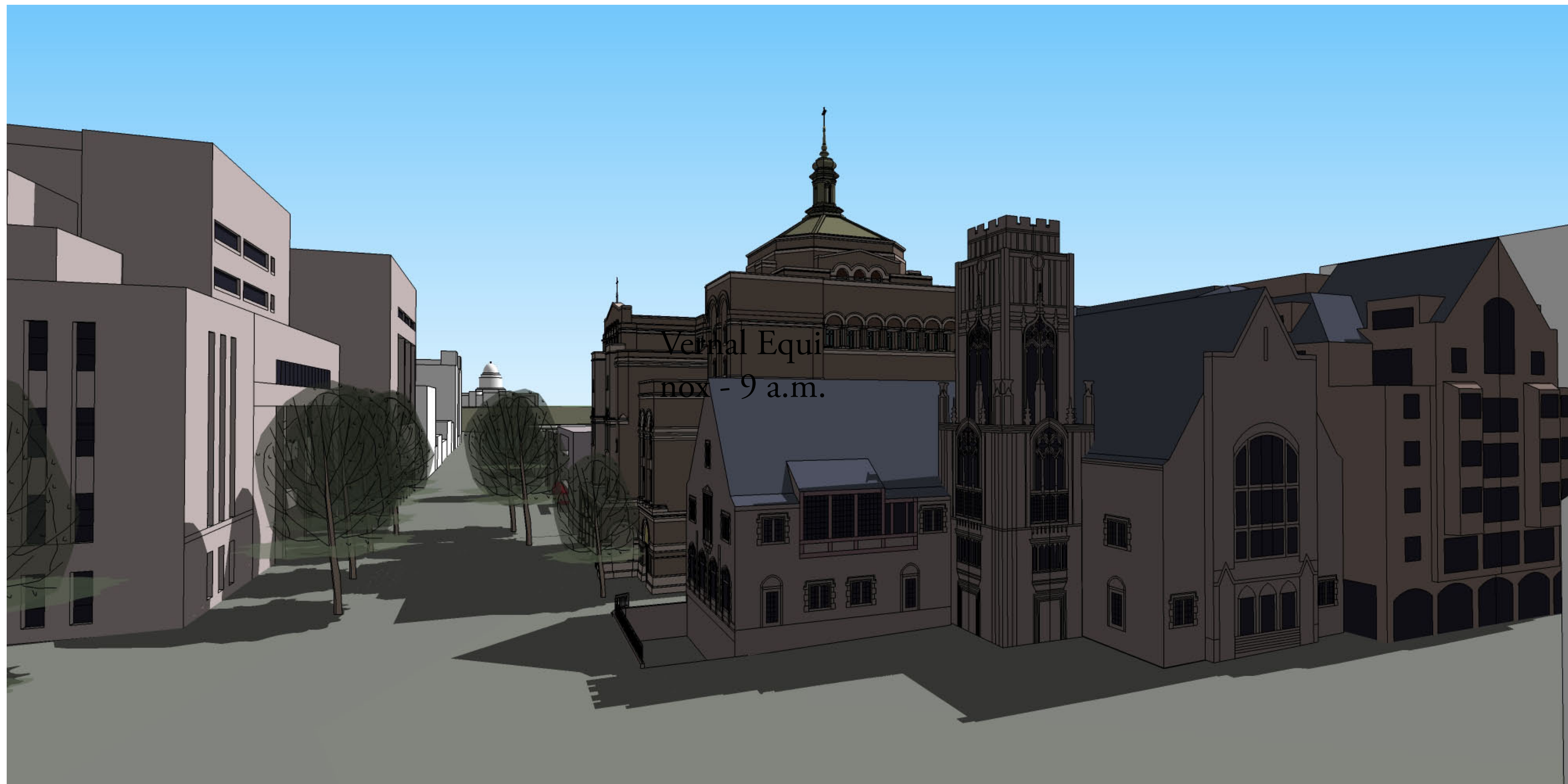




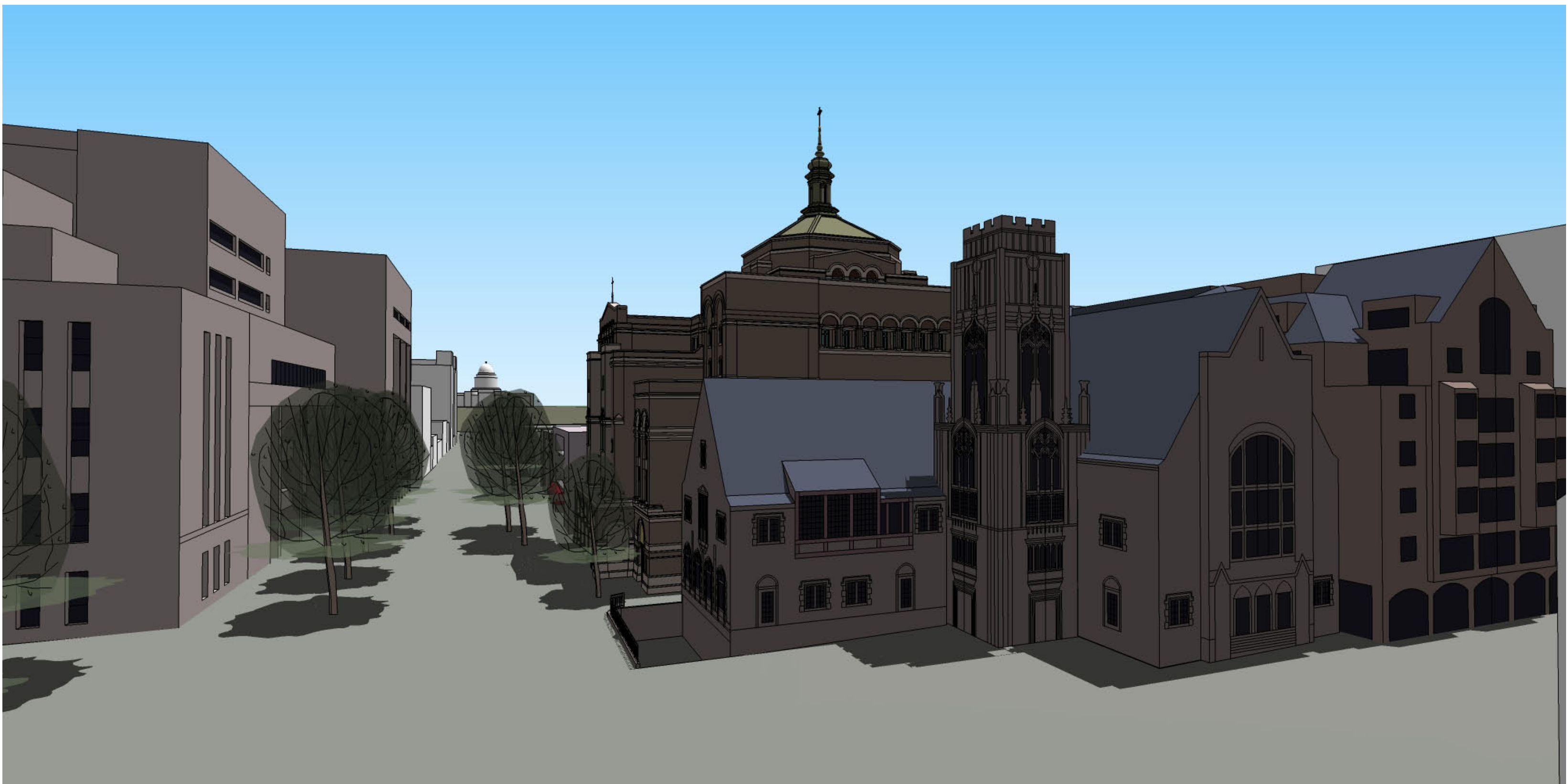
Vernal Equinox - 9 a.m.



Summer Solstice - 9 a.m.



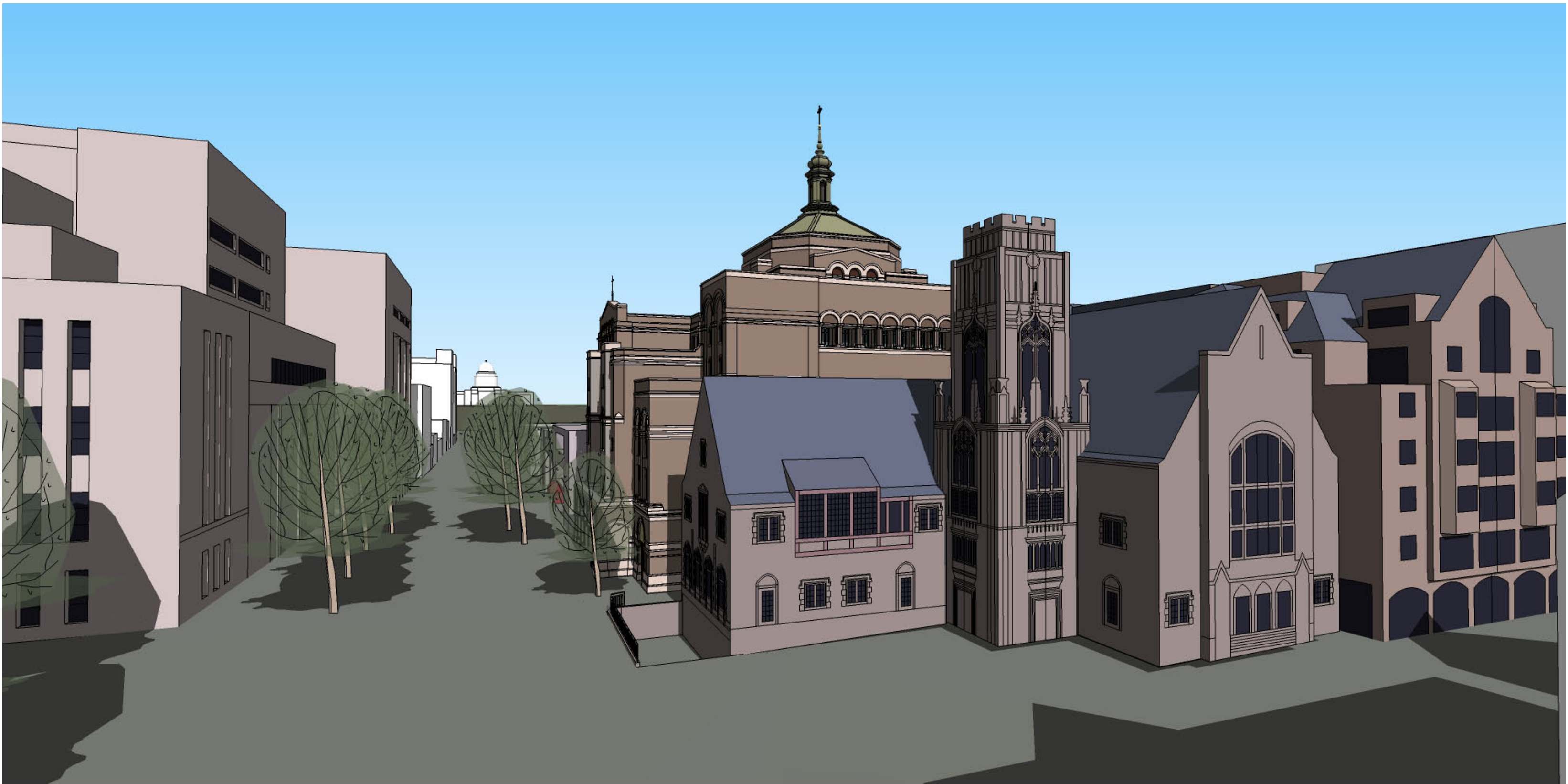
Vernal Equinox - Noon



Summer Solstice - Noon



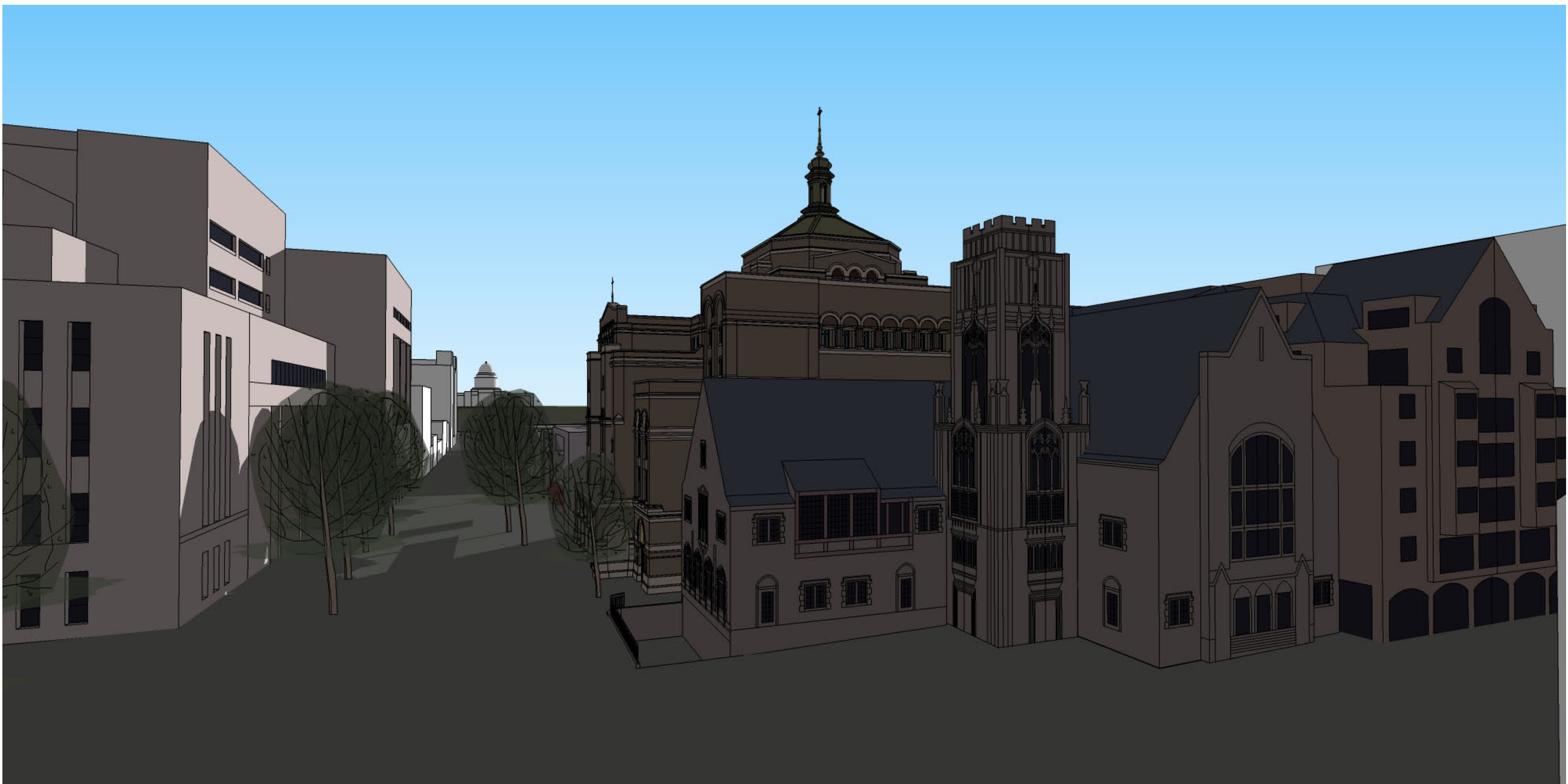
Vernal Equinox - 4 p.m.



Summer Solstice - 4 p.m.



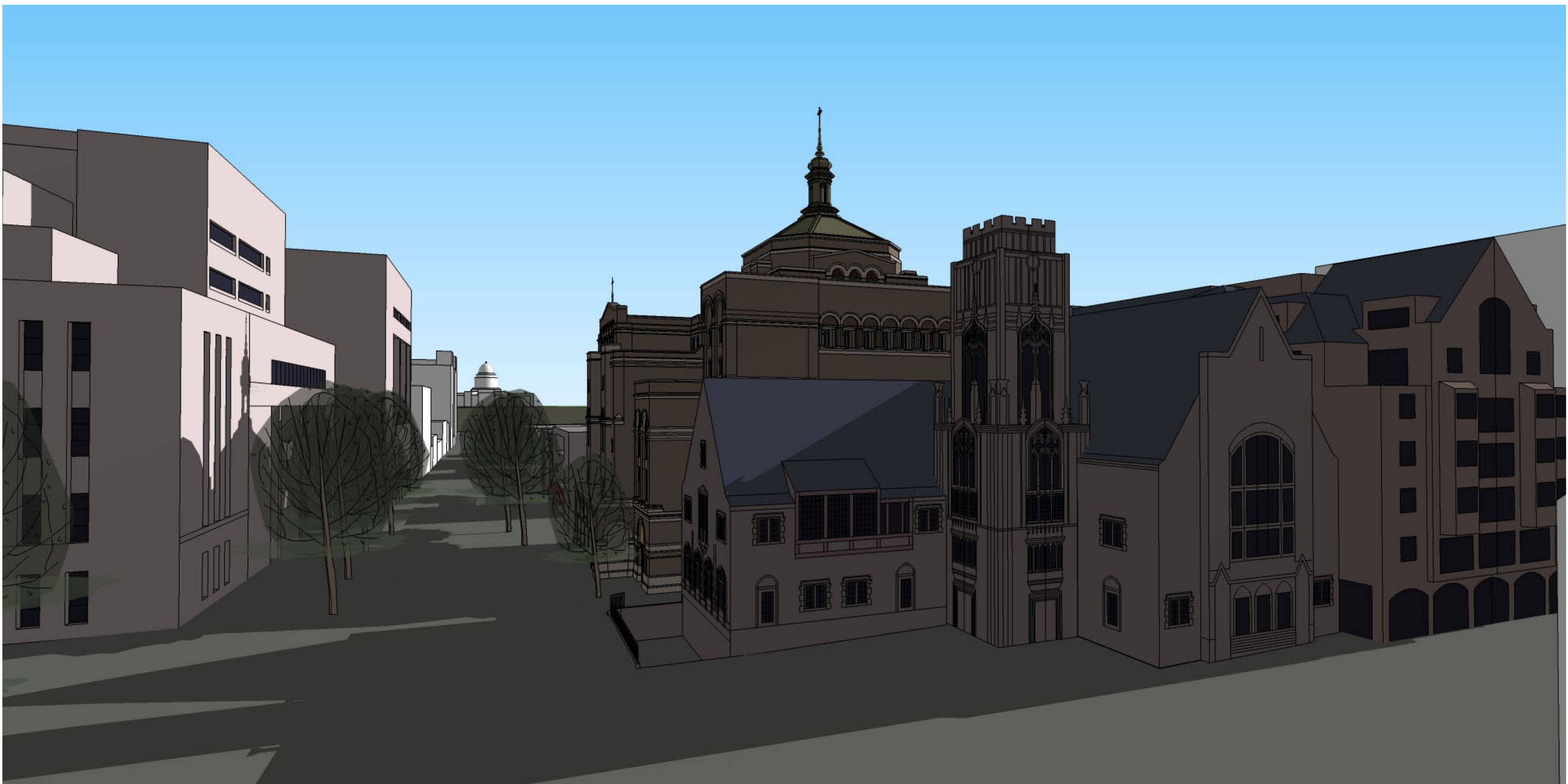
Autumnal Equinox - 9 a.m.



Winter Solstice - 9 a.m.



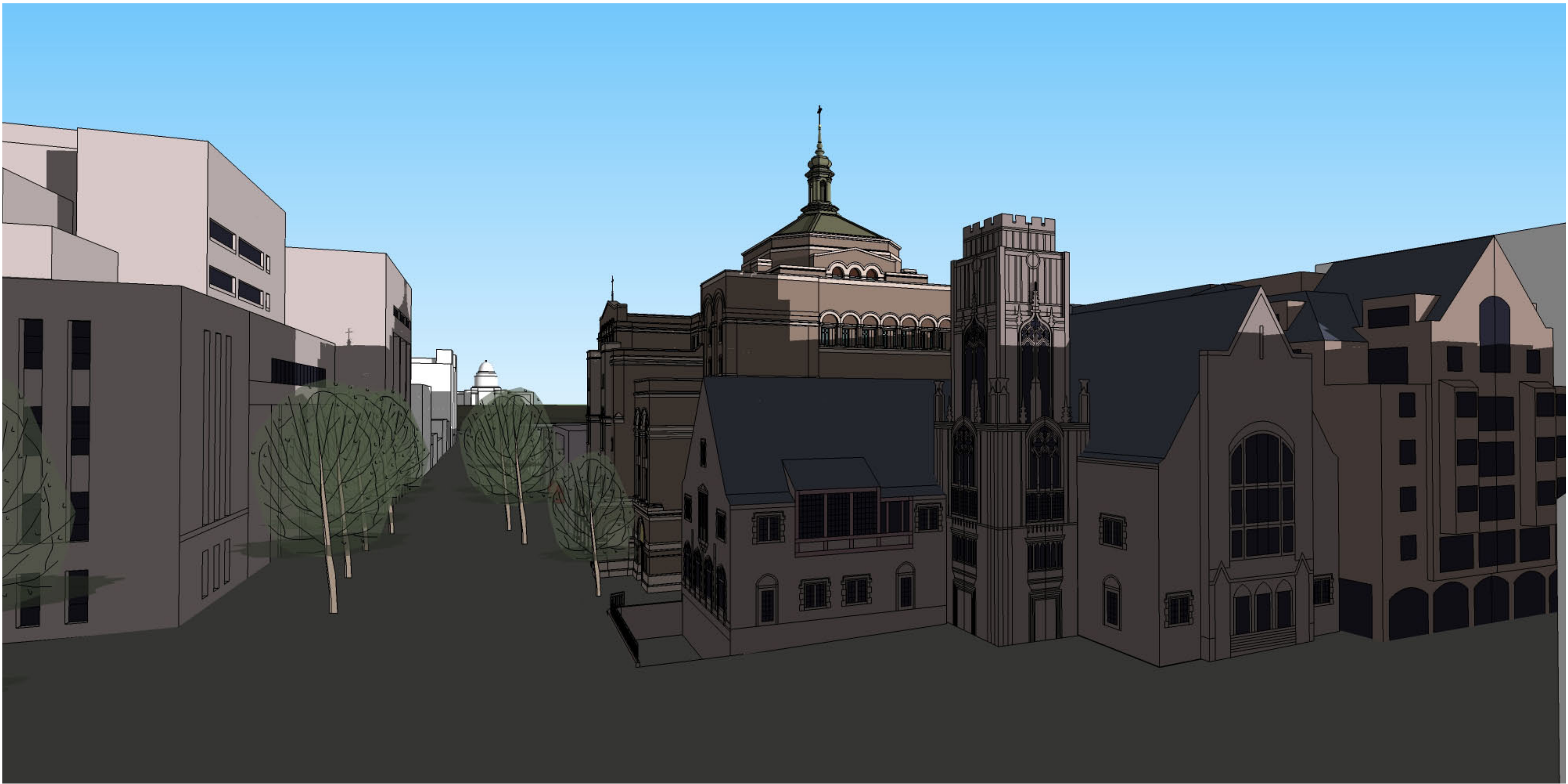
Autumnal Equinox - Noon



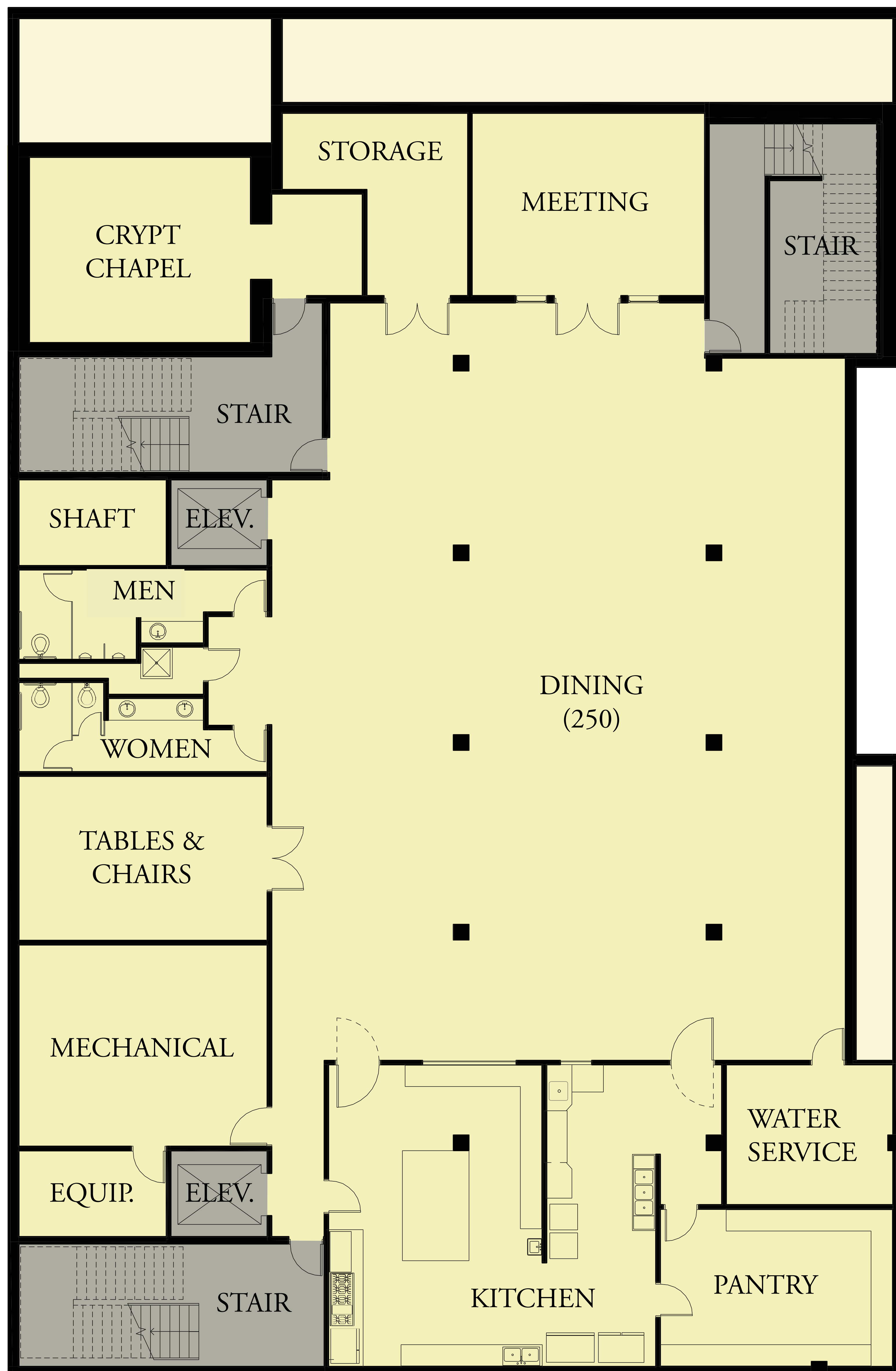
Winter Solstice - Noon



Autumnal Equinox - 4 p.m.



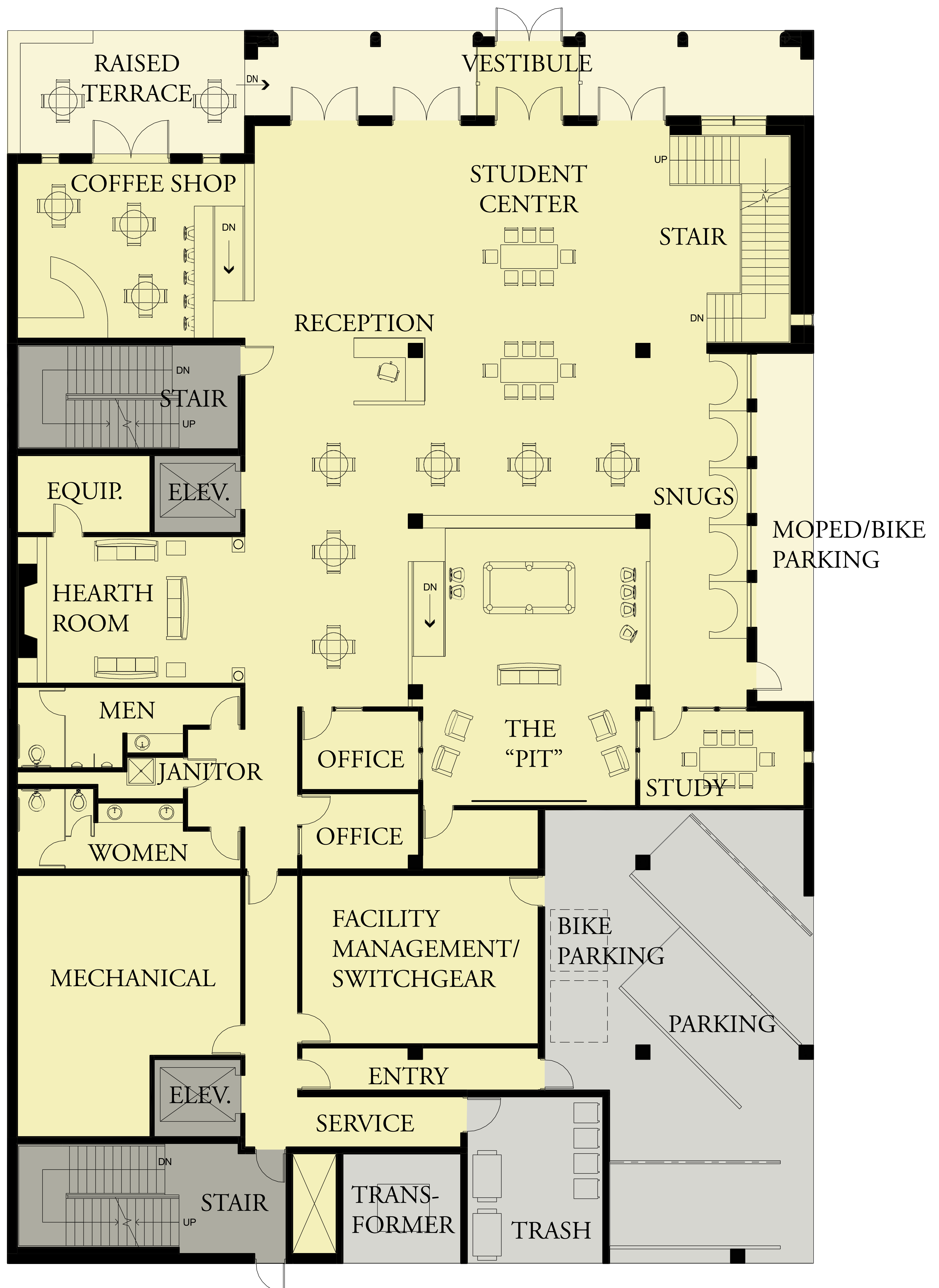
Winter Solstice - 4 p.m.



ST. PAUL University Catholic Center

Level B1 - Basement & Refectory

July 15, 2011



ST. PAUL University Catholic Center

Level 1 - Student Center

July 15, 2011

