

**SUMMARY**

1) Includes the optimal number and type of traffic calming measures the entirety of E. and W. Lakeside.





**SUMMARY**

- 1) Includes all potential options presented by Traffic Engineering on one plan
- 2) Relocates existing speed meters away from speed humps to distribute traffic calming measures throughout the length of E. and W. Lakeside.
- 3) Traffic calming measures are present the length of Lakeside.

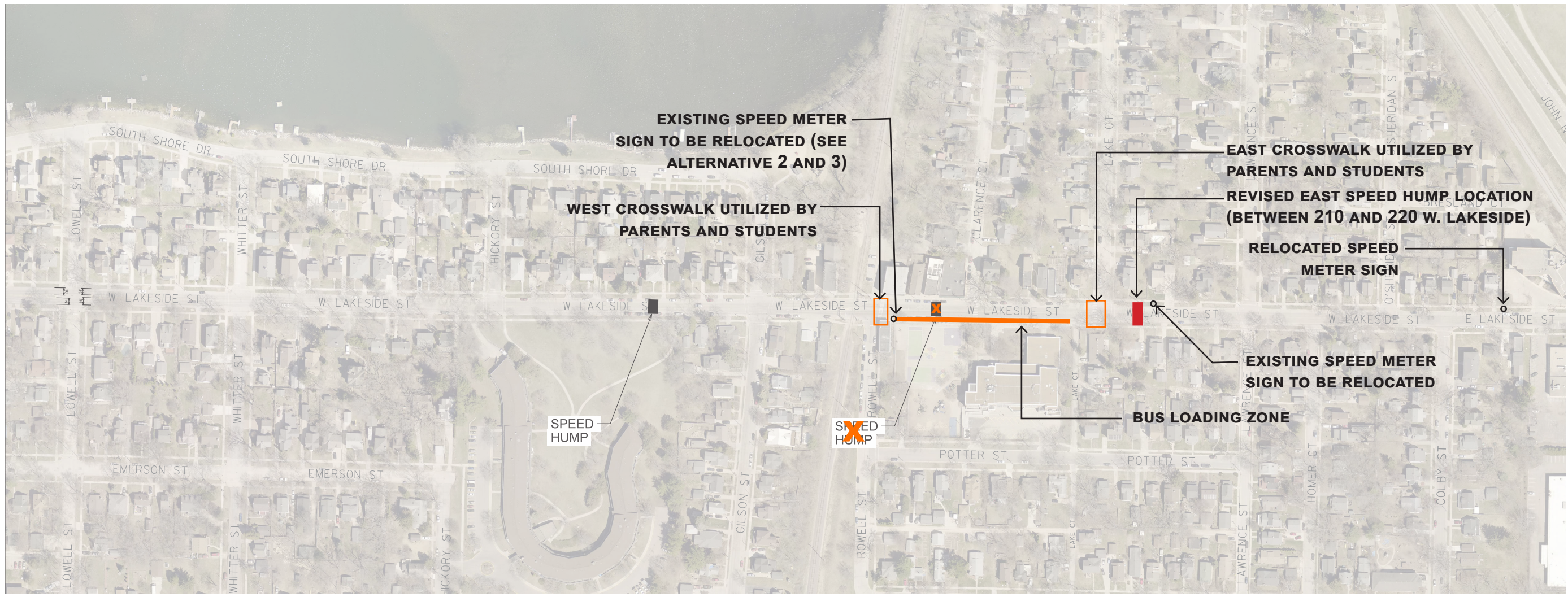




**SUMMARY**

- 1) Prioritizes speed calming devices per Traffic Engineering's potential solutions
- 2) Potential to calm traffic the length of E. and W. Lakeside is minimal





**SUMMARY**

- 1) Shift the east speed hump further east between 210 and 220 W. Lakeside - slows traffic (approaching from the east) before the crosswalk and bus loading zone at the school.
- 2) Relocated speed meters to 800 block of W. Lake and 100 block of E. Lakeside to spread traffic calming measures throughout the length of the street.