

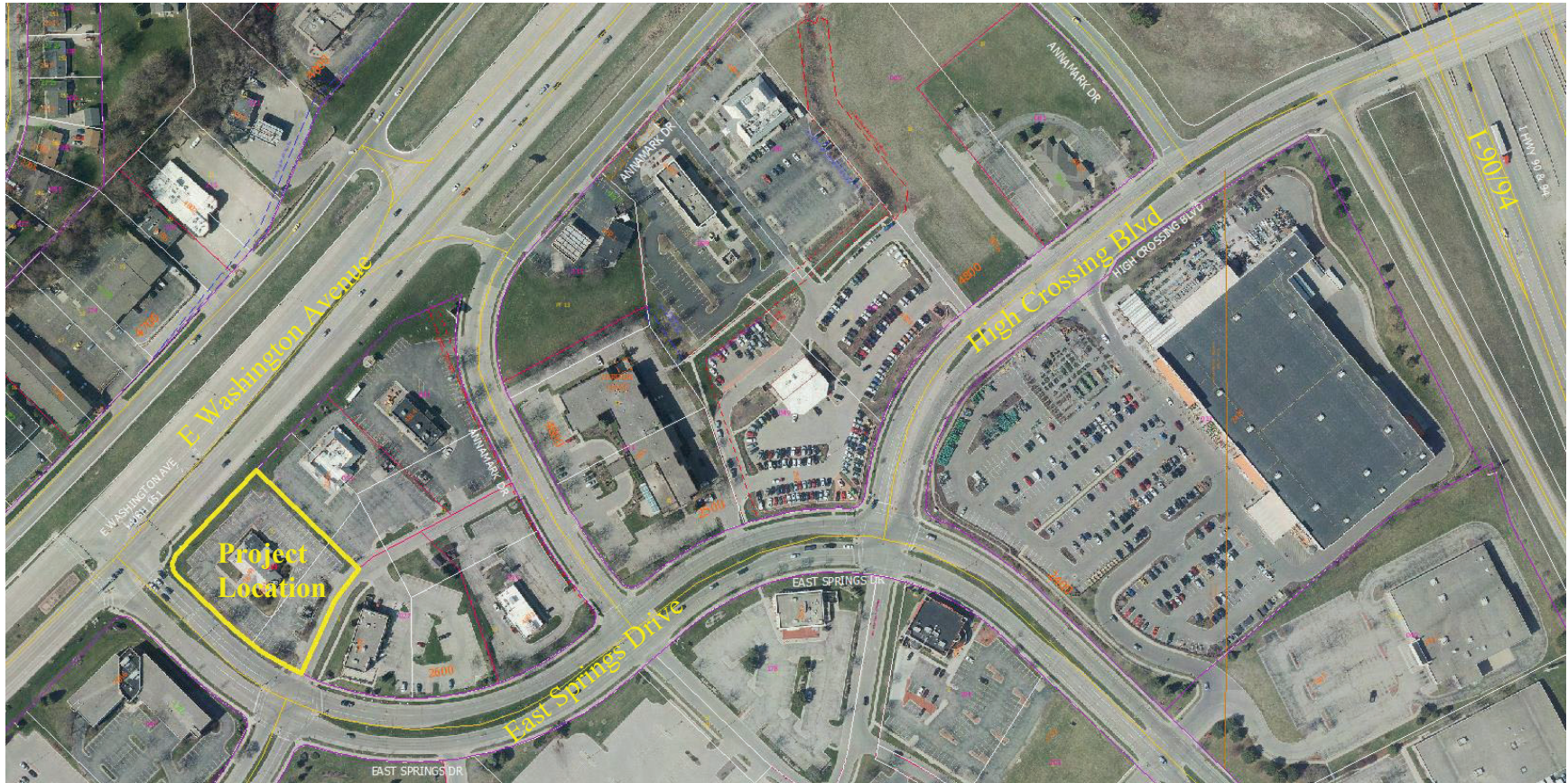
2651 East Springs Drive

Project No.: 14045

Contract No.: 9153

Entity: Panera, LLC

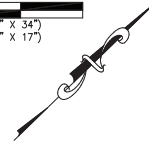
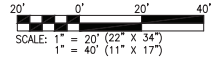
Location Map



Developer Agreement Work:

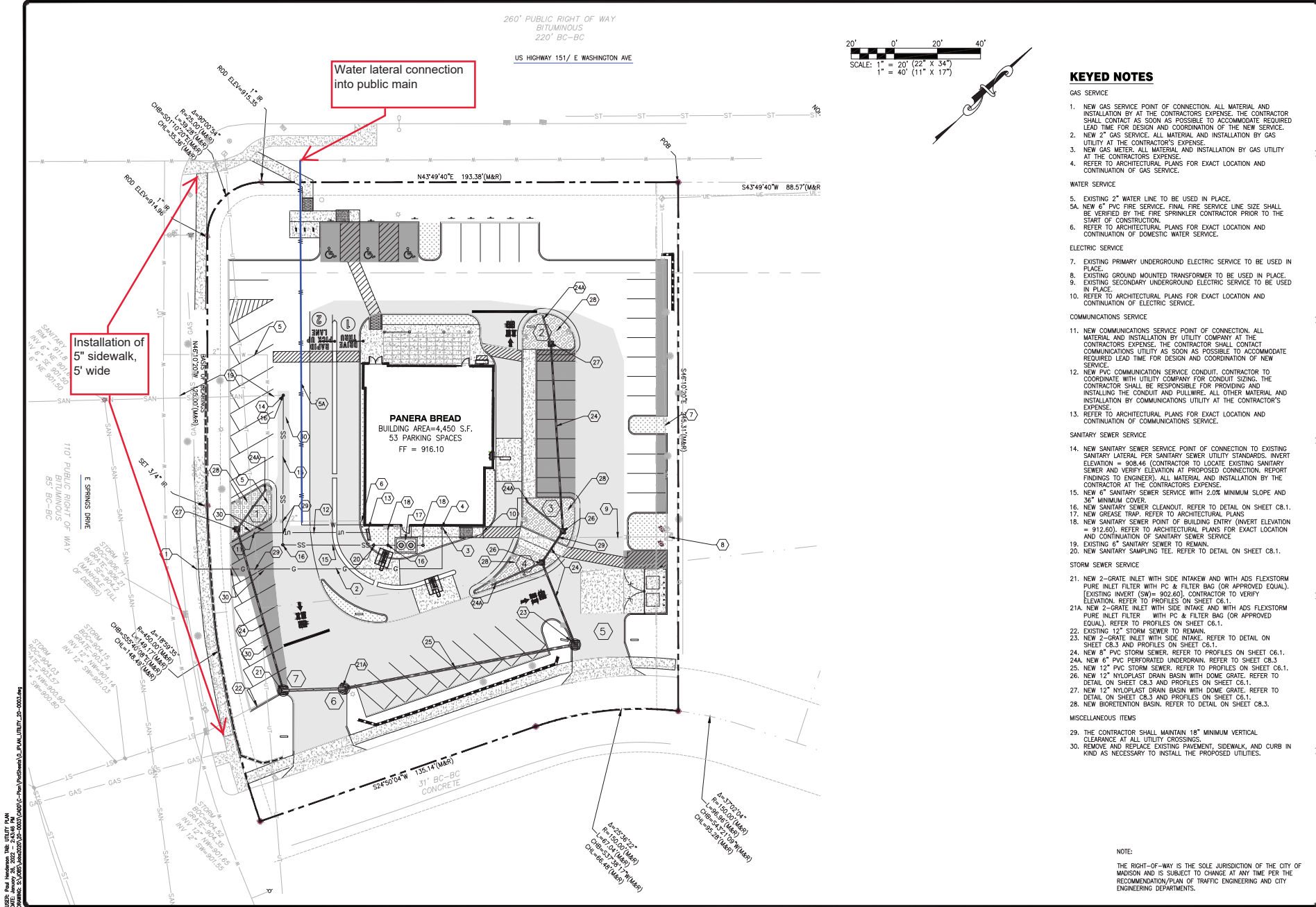
- Installation of public sidewalk East Spring Drive adjacent to project
- Water lateral connection into public main
- Tree protection in East Spring Drive terrace
- Signing and marking as needed per Traffic Engineering

260' PUBLIC RIGHT OF WAY
BITUMINOUS
220' BC-BC
US HIGHWAY 151/ E WASHINGTON AVE



Water lateral connection into public main

Installation of 5' sidewalk, 5' wide



KEYED NOTES

- GAS SERVICE**
1. NEW GAS SERVICE POINT OF CONNECTION. ALL MATERIAL AND INSTALLATION BY AT THE CONTRACTORS EXPENSE. THE CONTRACTOR SHALL CONTACT AS SOON AS POSSIBLE TO ACCOMMODATE REQUIRED LEAD TIME FOR DESIGN AND COORDINATION OF THE NEW SERVICE.
 2. NEW 2" GAS SERVICE. ALL MATERIAL AND INSTALLATION BY GAS UTILITY AT THE CONTRACTOR'S EXPENSE.
 3. NEW GAS METER. ALL MATERIAL AND INSTALLATION BY GAS UTILITY AT THE CONTRACTOR'S EXPENSE.
 4. REFER TO ARCHITECTURAL PLANS FOR EXACT LOCATION AND CONTINUATION OF GAS SERVICE.
- WATER SERVICE**
5. EXISTING 2" WATER LINE TO BE USED IN PLACE.
 - 5A. NEW 6" PVC FIRE SERVICE. FINAL FIRE SERVICE LINE SIZE SHALL BE VERIFIED BY THE FIRE SPRINKLER CONTRACTOR PRIOR TO THE START OF CONSTRUCTION.
 6. REFER TO ARCHITECTURAL PLANS FOR EXACT LOCATION AND CONTINUATION OF DOMESTIC WATER SERVICE.
- ELECTRIC SERVICE**
7. EXISTING PRIMARY UNDERGROUND ELECTRIC SERVICE TO BE USED IN PLACE.
 8. EXISTING GROUND MOUNTED TRANSFORMER TO BE USED IN PLACE.
 9. EXISTING SECONDARY UNDERGROUND ELECTRIC SERVICE TO BE USED IN PLACE.
 10. REFER TO ARCHITECTURAL PLANS FOR EXACT LOCATION AND CONTINUATION OF ELECTRIC SERVICE.
- COMMUNICATIONS SERVICE**
11. NEW COMMUNICATIONS SERVICE POINT OF CONNECTION. ALL MATERIAL AND INSTALLATION BY UTILITY COMPANY AT THE CONTRACTOR'S EXPENSE. THE CONTRACTOR SHALL CONTACT COMMUNICATIONS UTILITY AS SOON AS POSSIBLE TO ACCOMMODATE REQUIRED LEAD TIME FOR DESIGN AND COORDINATION OF NEW SERVICE.
 12. NEW PVC COMMUNICATION SERVICE CONDUIT. CONTRACTOR TO COORDINATE WITH UTILITY COMPANY FOR CONDUIT SIZING. THE CONTRACTOR SHALL BE RESPONSIBLE FOR PROVIDING AND INSTALLING THE CONDUIT AND PULLWIRE. ALL OTHER MATERIAL AND INSTALLATION BY COMMUNICATIONS UTILITY AT THE CONTRACTOR'S EXPENSE.
 13. REFER TO ARCHITECTURAL PLANS FOR EXACT LOCATION AND CONTINUATION OF COMMUNICATIONS SERVICE.
- SANITARY SEWER SERVICE**
14. NEW SANITARY SEWER SERVICE POINT OF CONNECTION TO EXISTING SANITARY LATERAL PER SANITARY SEWER UTILITY STANDARDS. INVERT ELEVATION = 908.46 (CONTRACTOR TO LOCATE EXISTING SANITARY SEWER AND VERIFY ELEVATION AT PROPOSED CONNECTION. REPORT FINDINGS TO ENGINEER). ALL MATERIAL AND INSTALLATION BY THE CONTRACTOR AT THE CONTRACTOR'S EXPENSE.
 15. NEW 6" SANITARY SEWER SERVICE WITH 2.0% MINIMUM SLOPE AND 36" MINIMUM COVER.
 16. NEW SANITARY SEWER CLEANOUT. REFER TO DETAIL ON SHEET C8.1.
 17. NEW GREASE TRAP. REFER TO ARCHITECTURAL PLANS
 18. NEW SANITARY SEWER POINT OF BUILDING ENTRY (INVERT ELEVATION = 912.60). REFER TO ARCHITECTURAL PLANS FOR EXACT LOCATION AND CONTINUATION OF SANITARY SEWER SERVICE
 19. EXISTING 6" SANITARY SEWER TO REMAIN.
 20. NEW SANITARY SAMPLING TEE. REFER TO DETAIL ON SHEET C8.1.
- STORM SEWER SERVICE**
21. NEW 2"-GRATE INLET WITH SIDE INTAKE AND WITH ADS FLEXSTORM PURE INLET FILTER WITH PC & FILTER BAG (OR APPROVED EQUAL). (EXISTING INVERT (SW) = 902.60). CONTRACTOR TO VERIFY ELEVATION. REFER TO PROFILES ON SHEET C6.1.
 - 21A. NEW 2"-GRATE INLET WITH SIDE INTAKE AND WITH ADS FLEXSTORM PURE INLET FILTER WITH PC & FILTER BAG (OR APPROVED EQUAL). REFER TO PROFILES ON SHEET C6.1.
 22. EXISTING 12" STORM SEWER TO REMAIN.
 23. NEW 2"-GRATE INLET WITH SIDE INTAKE. REFER TO DETAIL ON SHEET C8.3 AND PROFILES ON SHEET C6.1.
 24. NEW 6" PVC STORM SEWER. REFER TO PROFILES ON SHEET C6.1.
 - 24A. NEW 6" PVC PERFORATED UNDERDRAIN. REFER TO SHEET C8.3.
 25. NEW 12" PVC STORM SEWER. REFER TO PROFILES ON SHEET C6.1.
 26. NEW 12" NYLOPLAST DRAIN BASIN WITH DOME GRATE. REFER TO DETAIL ON SHEET C8.3 AND PROFILES ON SHEET C6.1.
 27. NEW 12" NYLOPLAST DRAIN BASIN WITH DOME GRATE. REFER TO DETAIL ON SHEET C8.3 AND PROFILES ON SHEET C6.1.
 28. NEW BORETENTION BASIN. REFER TO DETAIL ON SHEET C8.3.
- MISCELLANEOUS ITEMS**
29. THE CONTRACTOR SHALL MAINTAIN 18" MINIMUM VERTICAL CLEARANCE AT ALL UTILITY CROSSINGS.
 30. REMOVE AND REPLACE EXISTING PAVEMENT, SIDEWALK, AND CURB IN KIND AS NECESSARY TO INSTALL THE PROPOSED UTILITIES.

NOTE:
THE RIGHT-OF-WAY IS THE SOLE JURISDICTION OF THE CITY OF MADISON AND IS SUBJECT TO CHANGE AT ANY TIME PER THE RECOMMENDATION/PLAN OF TRAFFIC ENGINEERING AND CITY ENGINEERING DEPARTMENTS.

DESIGNED/CALC BY	LFD
DRAWN BY	LFD
CHECKED BY	AMG
DRAWING SCALE	AS SHOWN
DATE	11/24/21
Job Number	20-0003
Sheet Number	C6.0

cole
CONSTRUCTION & PROJECT MANAGEMENT

PANERA BAKERY CAFE #151
4851 EAST SPRINGS DRIVE
MADISON, WI 53704

UTILITY PLAN

PANERA, LLC
3630 SOUTH CENTER ROAD, SUITE 200
ST. LOUIS, MO 63127
(314) 984-4000