

**APPLICATION FOR
URBAN DESIGN COMMISSION
REVIEW AND APPROVAL**

AGENDA ITEM # _____
Project # _____

34510

DATE SUBMITTED: <u>June 18, 2014</u>	Action Requested
UDC MEETING DATE: <u>June 25, 2014</u>	<input type="checkbox"/> Informational Presentation
	<input type="checkbox"/> Initial Approval and/or Recommendation
	<input checked="" type="checkbox"/> Final Approval and/or Recommendation

PROJECT ADDRESS: 633 N. Henry Street

ALDERMANIC DISTRICT: Ledell Zellers - District #2

OWNER/DEVELOPER (Partners and/or Principals)	ARCHITECT/DESIGNER/OR AGENT:
<u>Jeff Houden & Chris Houden</u>	<u>Knothe & Bruce Architects, LLC</u>
<u>Madison, WI</u>	<u>7601 University Avenue, Suite 201</u>
	<u>Middleton, Wisconsin 53562</u>

CONTACT PERSON: J. Randy Bruce/Knothe & Bruce Architects, LLC

Address: 7601 University Avenue, Suite 201
Middleton, Wisconsin 53562

Phone: 608-836-3690

Fax: 608-836-6934

E-mail address: rbruce@knothebruce.com

CITY OF MADISON

JUN 18 2014

12:23 PM
Planning & Community
& Economic Development

TYPE OF PROJECT:

(See Section A For:)

- Planned Unit Development (PUD)
 - General Development Plan (GDP)
 - Specific Implementation Plan (SIP)
- Planned Community Development (PCD)
 - General Development Plan (GDP)
 - Specific Implementation Plan (SIP)
- Planned Residential Development (PRD)
- New Construction or Exterior Remodeling in an Urban Design District* (A public hearing is required as well as a fee)
- School, Public Building or Space (Fee may be required)
- New Construction or Addition to or Remodeling of a Retail, Hotel, or Motel Building Exceeding 50,000 Sq.Ft.
- Planned Commercial Site

(See Section B for:)

- New Construction or Exterior Remodeling in C4 District (Fee required)

(See Section C for:)

- R.P.S.M. Parking Variance (Fee required)

(See Section D for:)

- Comprehensive Design Review* (Fee required)
- Street Graphics Variance* (Fee Required)
- Other Conditional Use

*Public Hearing Required (Submission Deadline 3 Weeks in Advance of Meeting Date)

June 18, 2014

Urban Design Commission
City of Madison
215 Martin Luther King Jr. Blvd.
PO Box 2985
Madison, WI 53701

Re: Minor Alteration to Planned Development
633 N Henry St.
Madison, WI

KBA Project # 0804

Dear Mr. Martin,

The following alterations have been made to the plans since the Plan Commission approval on February 5, 2013 and are submitted for your approval.

Elevations: Sheets A-2.1 – A-2.3:

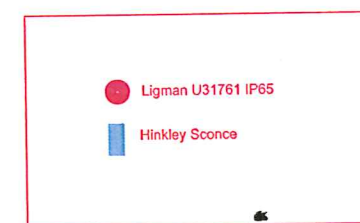
- We are proposing to add exterior lighting to the Iota Court and Henry Street facades.

Thank you for your time in reviewing our proposal.

Sincerely,

J. Randy Bruce, AIA
Managing Member





1 ELEVATION ALONG IOTA COURT
1/8" = 1'-0"



2 ELEVATION ALONG HENRY STREET
1/8" = 1'-0"

Revisions
Issued For Preliminary Bidding: March 14, 2013
Contract Set: July 1, 2013
Issued for Plan Review: August 2, 2013
Re-issued for Plan Review: August 14, 2013
Issued for Construction: September 3, 2013
Minor Alteration: January 13, 2014

Project Title
The Waterfront Apartments

633 N. Henry Street
Madison, WI
Drawing Title
Elevations

Project No. **0804** Drawing No. **A-2.1**

This document contains confidential or proprietary information of Knothe & Bruce Architects. Neither the document nor the information herein is to be reproduced, distributed, used, or disclosed, either in whole or in part, except as specifically authorized by Knothe & Bruce Architects. Knothe & Bruce Architects is a Limited Liability Company of Wisconsin.



1 **SOUTHEAST ELEVATION**
 A-2.2 V/S = 1'-0"



2 **NORTHEAST ELEVATION**
 A-2.2 V/S = 1'-0"

Revisions

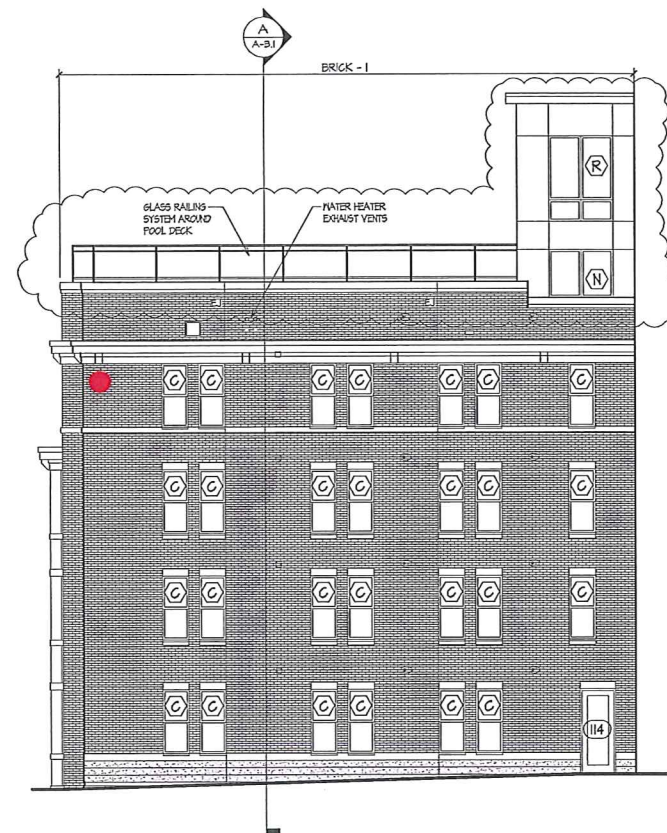
Issued For Preliminary Bidding	March 14, 2013
Contract Set	July 1, 2013
Issued for Plan Review	August 2, 2013
Re-issued for Plan Review	August 14, 2013
Issued for Construction	September 3, 2013
Minor Alteration	January 13, 2014

Project Title
The Waterfront Apartments

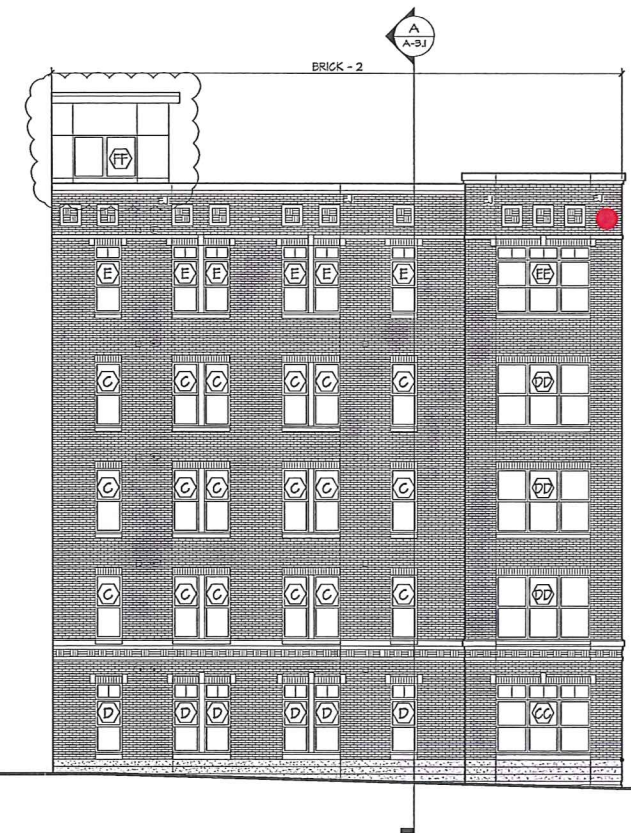
633 N. Henry Street
 Madison, WI
 Drawing Title
Elevations

Project No. **0804** Drawing No. **A-2.2**

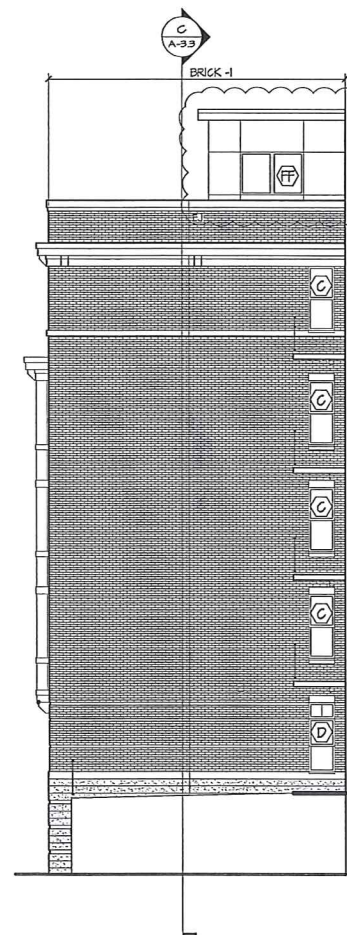
This document contains confidential or proprietary information of Knothe & Bruce Architects. Neither the document nor the information herein is to be reproduced, distributed, copied, or disclosed other than in whole or in part, except as specifically authorized by Knothe & Bruce Architects. Knothe & Bruce Architects is a limited liability company of Wisconsin.



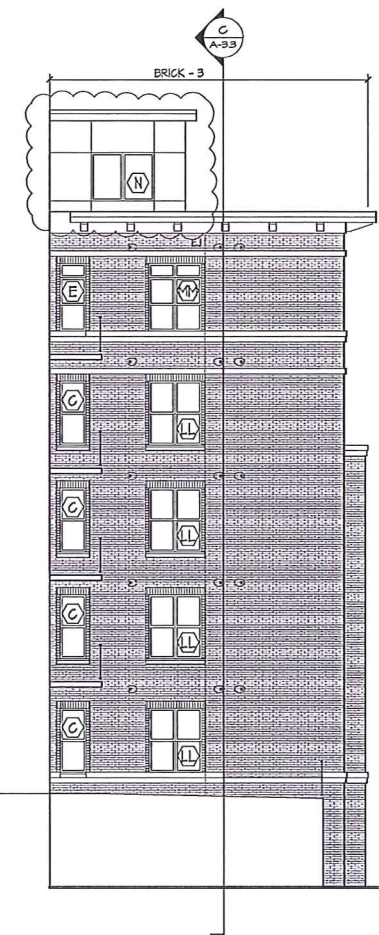
1 SOUTH PLAZA ELEVATIONS
A-23 1/8" = 1'-0"



2 SOUTH PLAZA ELEVATIONS
A-23 1/8" = 1'-0"



3 NORTH PLAZA ELEVATIONS
A-23 1/8" = 1'-0"



4 NORTH PLAZA ELEVATIONS
A-23 1/8" = 1'-0"

EXTERIOR MATERIAL SCHEDULE			
BUILDING MATERIAL	MATERIAL	MANUFACTURER	COLOR
COMPOSITE BOARD AND TRIM	COMPOSITE	SMART SIDE	TBD
METAL PANEL	METAL	GMS, COATED METALS GROUP	TBD
WINDOW TRIM	COMPOSITE	SMART SIDE	TBD
WINDOWS	FIBERGLASS	MARVIN ALL ULTREX	TBD
BRICK VENEER #1	MASONRY	TBD	TBD
BRICK VENEER #2	MASONRY	TBD	TBD
BRICK VENEER #3	MASONRY	TBD	TBD
MORTAR			COLOR TO MATCH MASONRY
FLASHING	STEEL	PAC GLAD	MATCH TO ADJACENT MATERIAL
PRECAST SILL	PRECAST	EDWARDS	TBD
DECK TRIM	STEEL CHANNEL		TBD
RAILINGS	ALUMINUM	MILLIANS	BLACK
ENTRANCE DOORS	ALUMINUM	T.B.D.	TBD
BASMENT WINDOWS	ALUMINUM	T.B.D.	TBD
GARAGE MAN DOOR	STEEL	T.B.D.	TBD
OVERHEAD GARAGE DOOR	ALUMINUM	T.B.D.	TBD

Revisions
 Issued For Preliminary Bidding: March 14, 2013
 Contract Set: July 1, 2013
 Issued for Plan Review: August 2, 2013
 Re-issued for Plan Review: August 14, 2013
 Issued for Construction: September 3, 2013
 Minor Alteration: January 13, 2014

Project Title
**The Waterfront
 Apartments**

633 N. Henry Street
 Madison, WI
 Drawing Title
Elevations

Project No. Drawing No.
0804 A-23

This document contains confidential or proprietary information of Knothe & Bruce Architects. Further the document and the information herein is to be reproduced, distributed, used, or modified, either in whole or in part, without the express written consent of Knothe & Bruce Architects. Knothe & Bruce Architects is a Limited Liability Company of Wisconsin.



The Waterfront
Exterior Lighting
June 18, 2014





The Waterfront
Exterior Lighting
June 18, 2014





Begin your search here..

Search



Customer Service Quick Search

Home Shop by Category Shop by Collection Best Sellers Sales No Tax* | Free Shipping* | Free Returns*

Home » Trafalgar » Outdoor Wall Lights » Hinkley Lighting 1319MO

Hinkley Lighting Trafalgar 3 Light Outdoor Wall Lantern in Mocha 1319MO

SKU # 1319MO



IN STOCK
56
04/23/2014

\$459.00 per each

List Price \$688.50
You Save \$229.50 (33%)

Select from multiple options

- 1. Finish
- 2. Number Of Bulbs
- 3. System

Show All Options

Quantity I want more than 100

Add to Cart

Add to List or Make an Offer

Zoom Image

Hinkley Lighting Trafalgar 3 Light Outdoor Wall Lantern in Mocha 1319MO

General Information | Manufacturer's Catalog(s) | Questions

Hinkley Lighting Trafalgar 3 Light Outdoor Wall Lantern in Mocha 1319MO

X Large Wall Outdoor

Brand Information

- Brand: Hinkley Lighting
- Collection: Trafalgar
- SKU: 1319MO
- UPC: 00640665131918

Design Information

- Category: Outdoor Wall Lights
- Finish: Mocha
- Glass: Clear Seedy Glass
- Material: Cast Aluminum

Dimensions and Weight

- Width: 12.00 in.
- Height: 26.50 in.
- Extension/Depth: 16.00 in.
- Backplate/Canopy Width: 10.00 in.
- Backplate/Canopy Length: 18.75 in.
- Weight: 24.00 lb.

Bulb Information

- Bulbs Included: No
- Primary Bulb(s): 3 x 40 watts Candelabra

Product Rating

- Voltage: 120
- Outdoor Rating: Outdoor Rated
- Safety Rating: c-UL-us Wet

Other Specifications

- Ships Via: UPS (FREE SHIPPING)
- System: Standard

Have a question about this product? Ask us!

Live Chat

Submit a Question

U h a i n g # S u r g x f w



Hinkley Lighting 1314MB
Trafalgar 1 Light Outdoor Wall Lantern in Museum Black

\$139.00



Hinkley Lighting 1316MB
Trafalgar 1 Light Outdoor Wall Lantern in Museum Black

\$73.00



Hinkley Lighting 1319MB
Trafalgar 3 Light Outdoor Wall Lantern in Museum Black

\$459.00



Hinkley Lighting 1315MB
Trafalgar 3 Light Outdoor Wall Lantern in Museum Black

\$329.00



Hinkley Lighting 1314MO
Trafalgar 1 Light Outdoor Wall Lantern in Mocha

\$139.00

See the entire Trafalgar Collection



Free Returns
Within 30 days of purchase for like new, uninstalled items.

Additional Details Hinkley Lighting Lights

Call 866-344-3875 | Live Chat Now | Login | **110% Price Match** Find a lower price and we'll beat it by 10% of the difference. | My Lists | My Cart

TTO: 11.5

Hinkley Lighting's Catalog(s)

Click on the catalog to view the PDF in your browser or right-click and hit "Save As" to save the PDF to your computer.



K 12nd | #1jkwzj#
Exv1ghw#K xxuv

Call For Our Best Price - 866.344.3875

Sales Representatives - 866.344.3875

Mon - Fri 8am to Midnight EST
Sat & Sun 9am to Midnight EST

Customer Service - 866.344.3875
Mon - Thu 9am to 7pm EST
Friday 9am to 5:30pm EST

Customer Reviews

There are no reviews for this product. Currently review requests are being sent to Lighting New York customers that have already purchased and received the product.

Questions about Hinkley Lighting 1319MO

Ask us a question...

Be the first to ask a question about this product!

Sign up to receive special offers by email!

Hq4hu8p d1Hdggu1vv

Sign Up

- Shop Now**
 - Shop by Category
 - Shop by Collection
 - Shop Best Sellers
 - Shop Sales
- Customer Service**
 - Contact Us
 - Shipping
 - Ordering Info
 - Guarantee
 - Privacy Policy
 - Return Policy
 - Security
 - Pricing Disclaimer
 - Low Price Guarantee
- My Account**
 - Log In (Sign Up)
 - My Orders & Quotes
 - My Lists
 - My Addresses
 - My Product Reviews

Payment Accepted

Feel Secure Shopping at Hinkley Lighting Lights



BBB Rating: A+
as of 4/23/2014
Click for Review

Have a question about this product? Ask us!

Live Chat

Submit a Question

LUMINAIRE SPECIFICATION



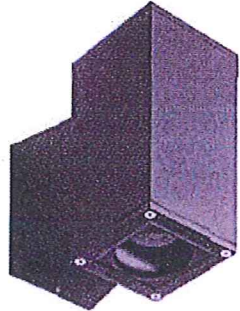
PROJECT : WATERFRONT

DATE :

LOCATION :

QUANTITY : NOTE :

IP65 : Suitable for wet locations
IK08 : Impact resistance (vandal resistant)



U31761 - 12W - 3000K Jet 4" square wall down light LED

Product Type

Wall luminaires with a selection of beam distributions for various downward or upward lighting requirements. Designed to illuminate the wall surface and for light accents on vertical surfaces.

They are suitable for many applications such as residential and pedestrian areas, shopping malls, parks and gardens, as well as commercial, historic or modern architectural interiors and exteriors. The luminaires have features such as long life, limited maintenance and constant lifetime performance. The cool lens is perfect for public and pedestrian areas. The luminaires use a high quality LED source with low energy consumption and long service life 50,000 - 80,000 hrs.

The Luminaire is rated as class I with the high power LED integral driver. Low copper content die-cast aluminum housing and frame. Stainless steel screws. Durable silicone rubber gasket and clear toughened glass. Single cable entry. Housing is treated with a chemical chromated protection before powder coating, ensuring high corrosion resistance. Anodized high purity aluminum reflector.

High power LED with three different beam distribution options in 3000K and 4000K, Consult factory for additional colors.

Physical Data

Height: 8.6"

Diameter: 4"

Weight: 7.5 lbs

Lamp

LED - 12W - 3000K - 638 Lm - CRI 80

For 12W - 4000K LED see product code U31762

For LED Cylinders with higher lumen outputs please consult the catalogue or contact the factory.

(For Different Lamp options please Consult the Catalogue, Website or Contact The Ligman Lighting Factory)

Voltage (Please Specify)

120 - 277V

Other _____

Color (Please Specify)

01-Black - RAL 9011 02- Dark Grey - RAL 7043

03-White - RAL 9003 04- Metallic Silver - RAL 9006

05-Matt Silver - RAL 9006 07- Custom - RAL _____

06-Bronze - RAL 6014

Note

- Integral Electronic Driver IP 65.

Beam Options

N- Narrow Beam - 19 Deg

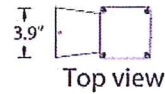
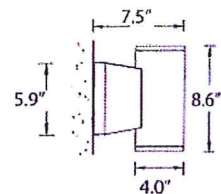
M- Medium Beam - 25 Deg

W- Wide Beam - 34 Deg

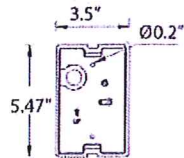
Options

F- Frosted Lens

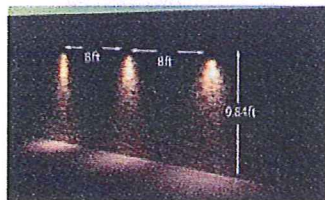
Hgt - Custom Height _____



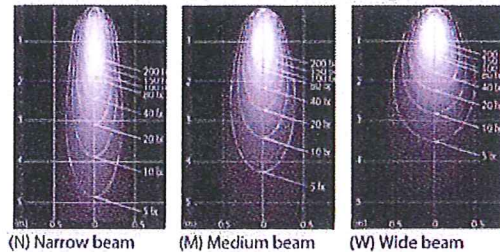
Bottom view



Mounting detail
Mounts over a 3"
Junction Box



NOTE:
The Jet is also available in up down configurations
See Product codes : U31751, U31752 Round
: U31771, U31772 Square



Head Office:
3302 NW 211th Terrace
Hillsboro,
Oregon
97125
USA

Tel: 503-645-0500
Fax: 503-645-8100
Email: info@ligmanlightingusa.com
Website: www.ligmanlightingusa.com



Ligman Lighting USA reserves the right to change specifications without prior notice.



3CTC/LED /3000K /180L /120V /D
 3 Watt; Candle; 3000K; Candelabra Base; 120 Volts

Features

- Solid State LED lighting
- Decorative replacement lamp
- Long life
- Dimmable

View [Dimmer Compatibility](#)



S8996

Item Number	UPC	Watts	Lamp Shape	Base	ANSI Base	Lamp Code	Voltage
S8996	045923089961	3	Candle	Candelabra	E12	3CTC/LED /3000K /180L /120V /D	120

Initial Lumens	Average Rated Hours	Kelvin Temp	CRI	Pack	Package Type
180	25000	3000	80	12	CD/1



National Toll-Free:
 800.43.SATCO
 (800.437.2826)
 www.satco.com

Distribution Centers:
 New York, Florida, Texas,
 Washington, California,
 Puerto Rico

Corporate Offices:
 110 Heartland Blvd.,
 Brentwood, NY 11717
 800.437.2826 631.243.2022
 Fax 631.243.2027

