



Architectural Design Consultants, Inc.

5100 Eastpark Boulevard
Suite 310
Madison, WI 53718

Phone: 608.254.6181
Email: info@adcidesign.com
Web: www.adcidesign.com

December 5, 2016

City of Madison Zoning Department
126 S. Hamilton St.
Madison, WI 53703

Attn: Jessica Vaughn, Zoning

**Re: Oak Park Place Nakoma
4325 Nakoma Rd**

Mrs. Vaughn,

Thank you for the opportunity to address concerns brought forward by the Urban Design Commission (UDC). Below is the list of modifications we have made to the Nakoma Development based on the conversation with UDC. Even though UDC chose not to take any action on the proposal that was in front of them. We were able to extract a few comments.

1. The top tier of the building looked too heavy:
The Parapet height has been lowered by 24" to reduce the scale of the top tier
2. The entrance to the facility is not identifiable:
The entry atrium has been pulled to the north face of the building along Nakoma Rd. By making this change we are now able to introduce an aluminum clerestory façade that identifies the location of the main entrance.
3. Interaction with Streetscape:
With the relocation of the entrance, the introduction of Balconies, and the introduction of intermediate roof lines we feel the streetscape interaction the City has been requesting is satisfied
4. Scale of the building:
Introduction of an Aluminum wood grain siding breaks the building down into two smaller components while the introduction of additional intermediate roof lines reduces the visual vertical scale of the façade.
5. Patterning of windows:
The floor plan has been modified to provide a consistent patterning of windows.

We feel the changes made have created a better product and conditional approval can be granted by the Planning Commission.

Sincerely,

ARCHITECTURAL DESIGN CONSULTANTS, INC.

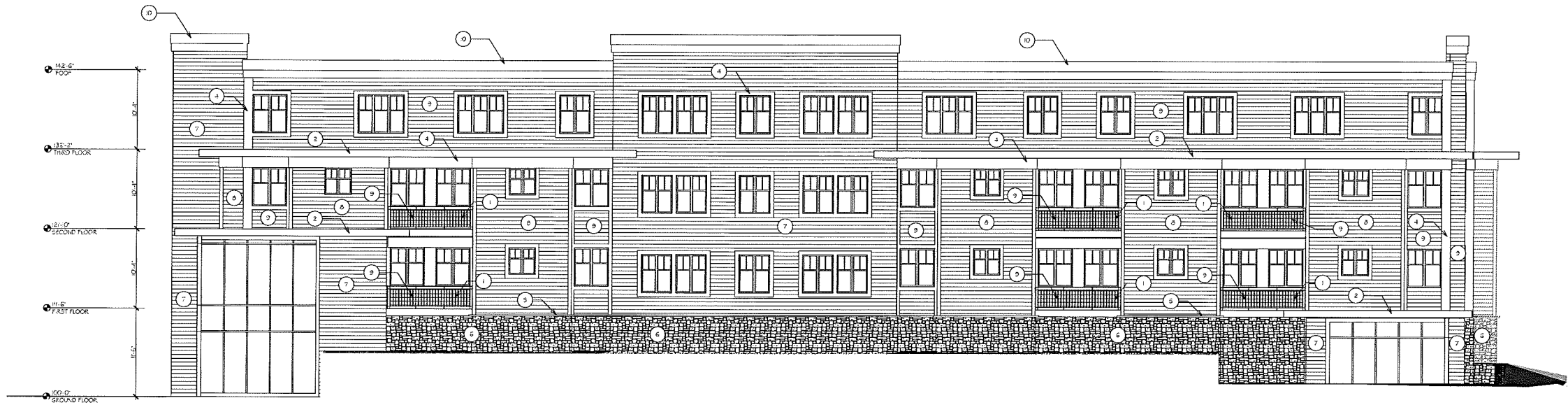
Bradley R Servin, AIA
Project Manager



**Architectural Design
Consultants, Inc.**

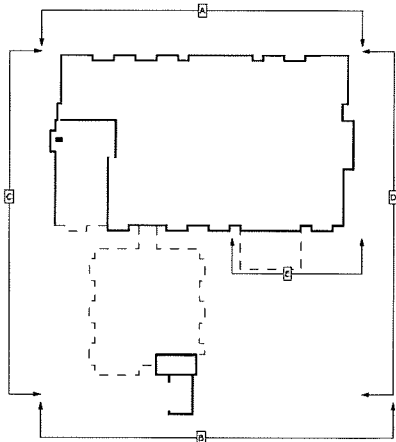
**Oak Park Place
Nakoma**

ELEVATION KEY NOTES	
1	GUARDRAIL
2	COMPOSITE WOOD FASCIA - COLOR: WHITE
3	COMPOSITE FRIEZE BOARD - COLOR: WHITE
4	COMPOSITE WOOD TRIM - COLOR: WHITE
5	STONE SILL
6	STONE VENEER - CULTURE STONE: CONCORD
7	HORIZONTAL WOOD GRAIN ALUMINUM SIDING - COLOR: DARK CHERRY
8	COMPOSITE WOOD LAP SIDING - COLOR: PEBBLE STONE CLAY
9	COMPOSITE WOOD LAP SIDING - COLOR: SANDSTONE



ELEVATION "A" (NORTH)

SCALE: 1/8" = 1'-0"



KEY PLAN

NOT TO SCALE

PRELIMINARY PLANS NOT FOR CONSTRUCTION

ADCI Architectural Design Consultants, Inc.

5100 Eastpark Blvd. • Suite 310
Madison, WI 53718
Phone: (608) 254-6181 Fax: (608) 254-2139

This document contains confidential or proprietary information of Architectural Design Consultants, Inc.
Neither this document nor the information herein is to be reproduced, distributed, used or disclosed either
in whole or in part except as specifically authorized by Architectural Design Consultants, Inc.

OAK PARK PLACE
NAKOMA

WISCONSIN

ELEVATIONS

Drawn By: ADCI STAFF
Checked By: B. SIMPSON
Date: 11-04-2016
Scale: AS NOTED
Job Number: 14-010

SHEET NUMBER
A9.1