

DRAFT

Community Gardens within City of Madison

Community Garden Hosts

- CDA
- City of Madison EDD
- City of Madison Park/Right-of-Way
- City of Madison Park
- City of Madison Water Utility
- Mad Met Sewer District
- State of Wisconsin
- UW Madison
- MMSD
- Private Property
- WISDOT RR Right-of-Way
- Right-of-Way
- 5 minute walk
- Metro BRT Routes
- Metro Routes (June 2023)

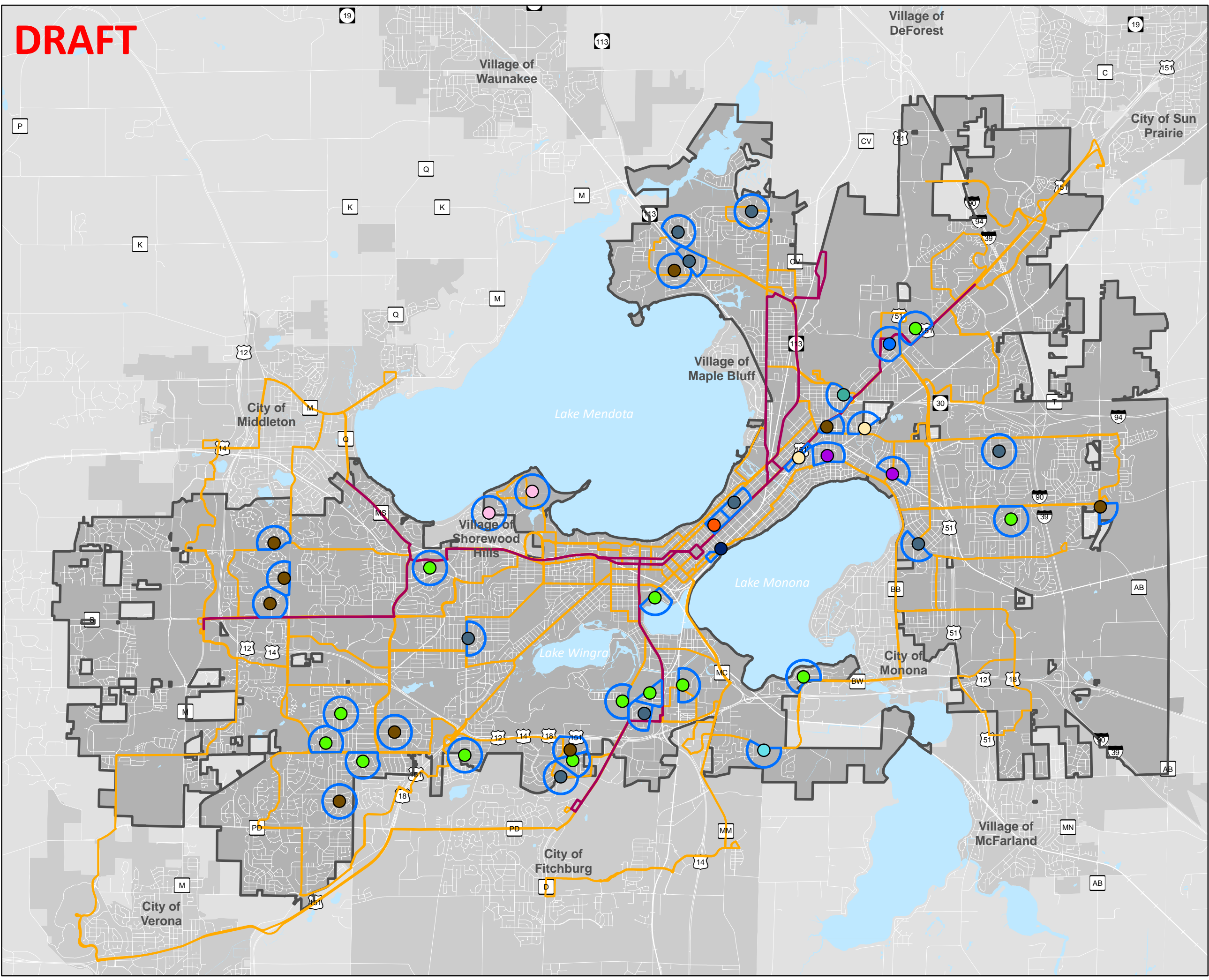
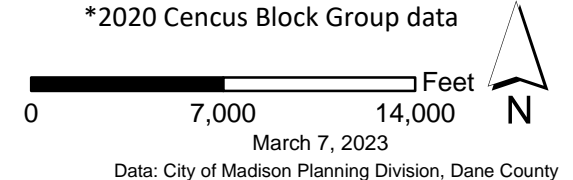
38.1 acres of community
gardens within City of Madison

+/- 3,285 households served
by community gardens

Population* (2020) within a
5 minute walk of a
community garden - 96,112

Households* (2020) within a
5 minute walk of a community
garden - 44,735

*2020 Census Block Group data



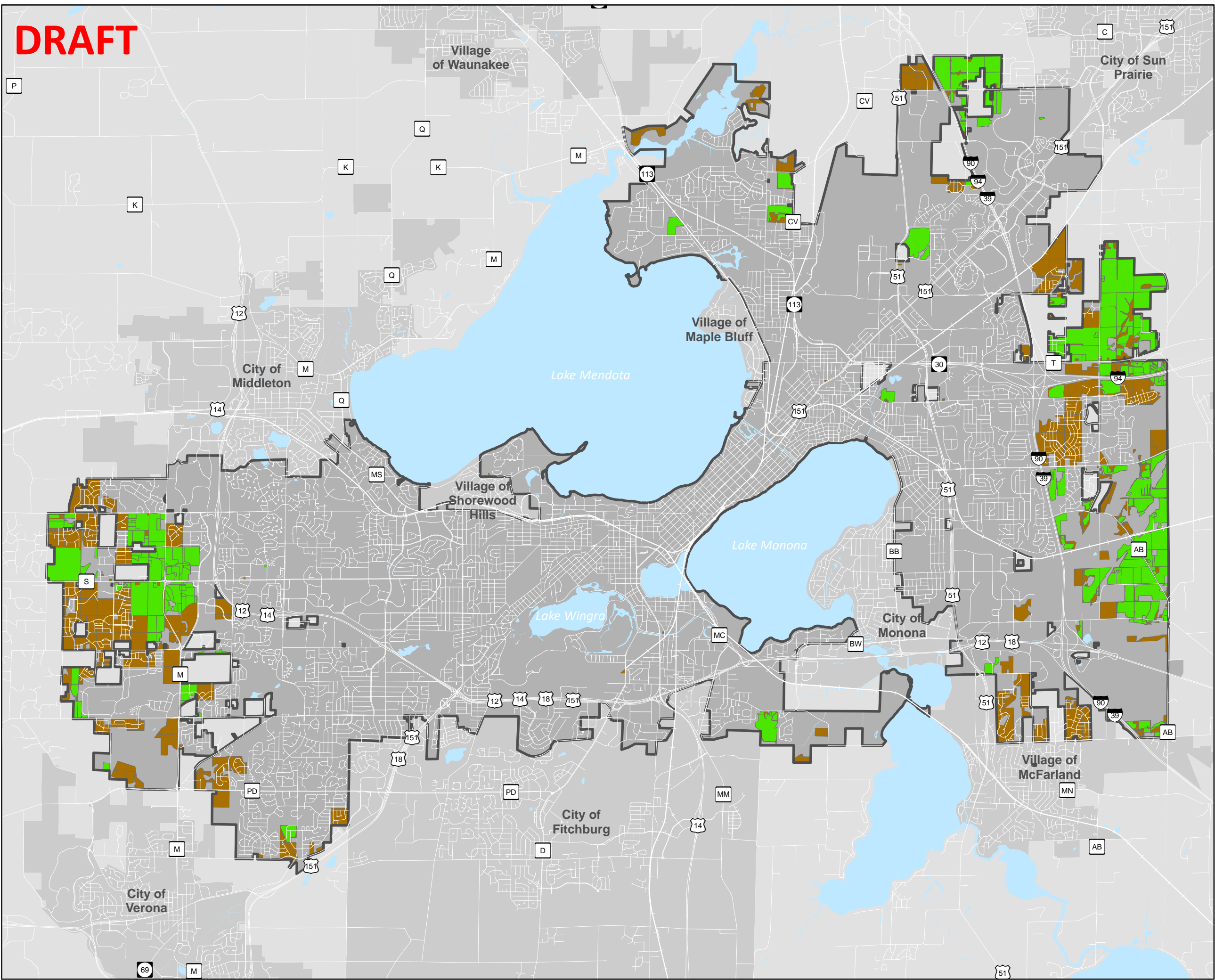
DRAFT

Farmland Loss 2000 - 2020

Legend

- 2020 Landuse - Agriculture
- 2000 Landuse - Agriculture

	Farmland Acres 2000	Farmland Acres 2020	Loss
Dane County	451,369 ac	377,919 ac	-73,450 ac
Madison	6,643 ac	3,529 ac	-3,114 ac




0 7,000 14,000 Feet

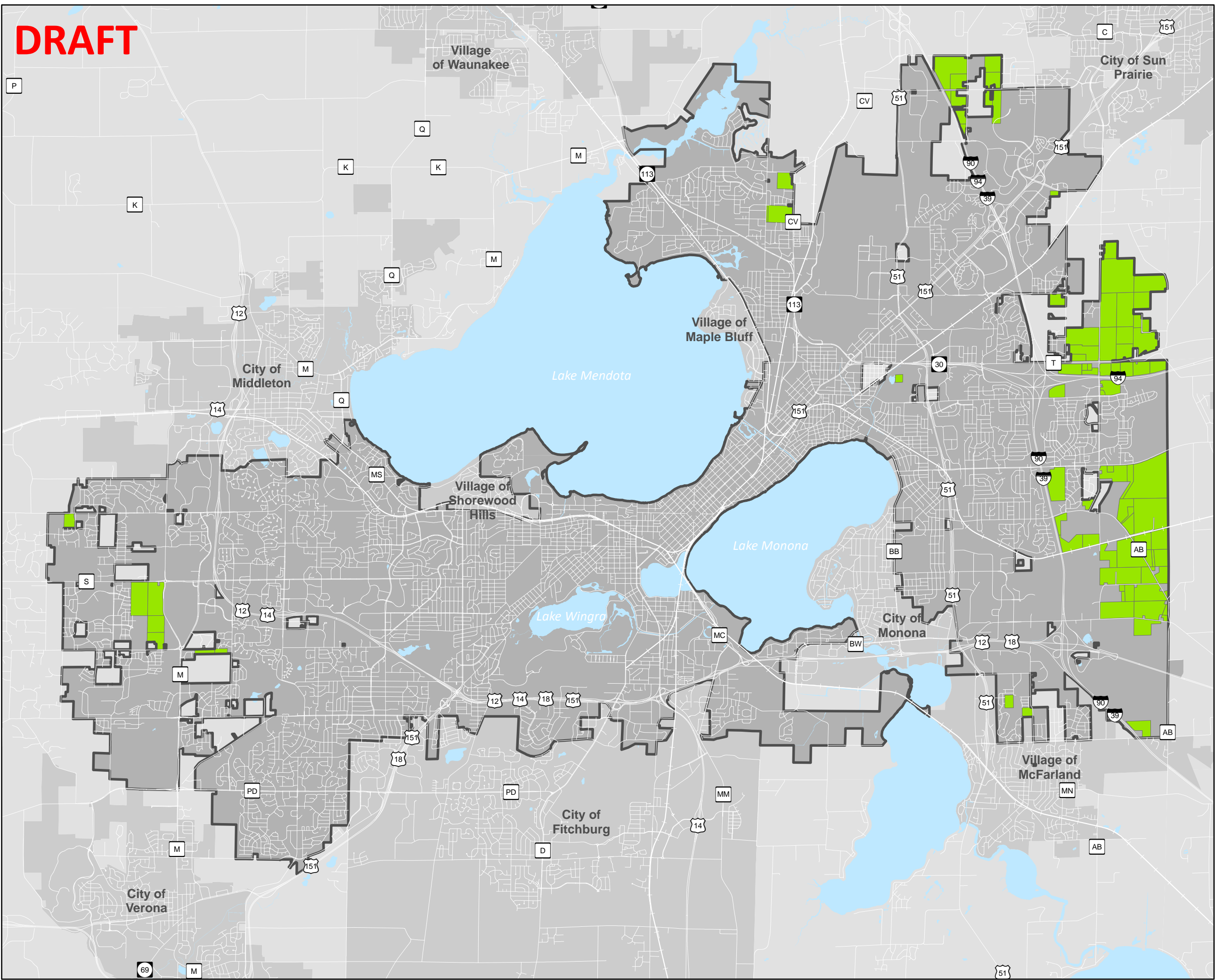
March 7, 2023
Data: City of Madison Planning Division, Dane County

DRAFT

Privately Owned Parcels Zoned for Agriculture

Legend


 Privately Owned Parcels Zoned for Agriculture
3,248 acres



0 7,000 14,000 Feet

March 7, 2023

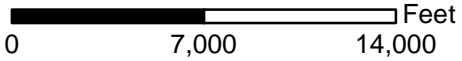
Data: City of Madison Planning Division, Dane County



DRAFT

Publically Owned Parcels

- City of Madison EDD
- City of Madison CDA
- City of Madison CDD
- City of Madison Engineering
- City of Madison Fire
- City of Madison Library
- City of Madison Transportation
- City of Madison Parks
- City of Madison Planning
- City of Madison Police
- City of Madison Sr Center
- City of Madison Streets
- City of Madison Metro Transit
- City of Madison Water Utility
- Dane County
- State of Wisconsin
- Madison College
- MMSD
- University of Wisconsin - Madison
- Land Banked Parcel
- Farmed City Parcels



March 7, 2023

Data: City of Madison Planning Division, Dane County



DRAFT

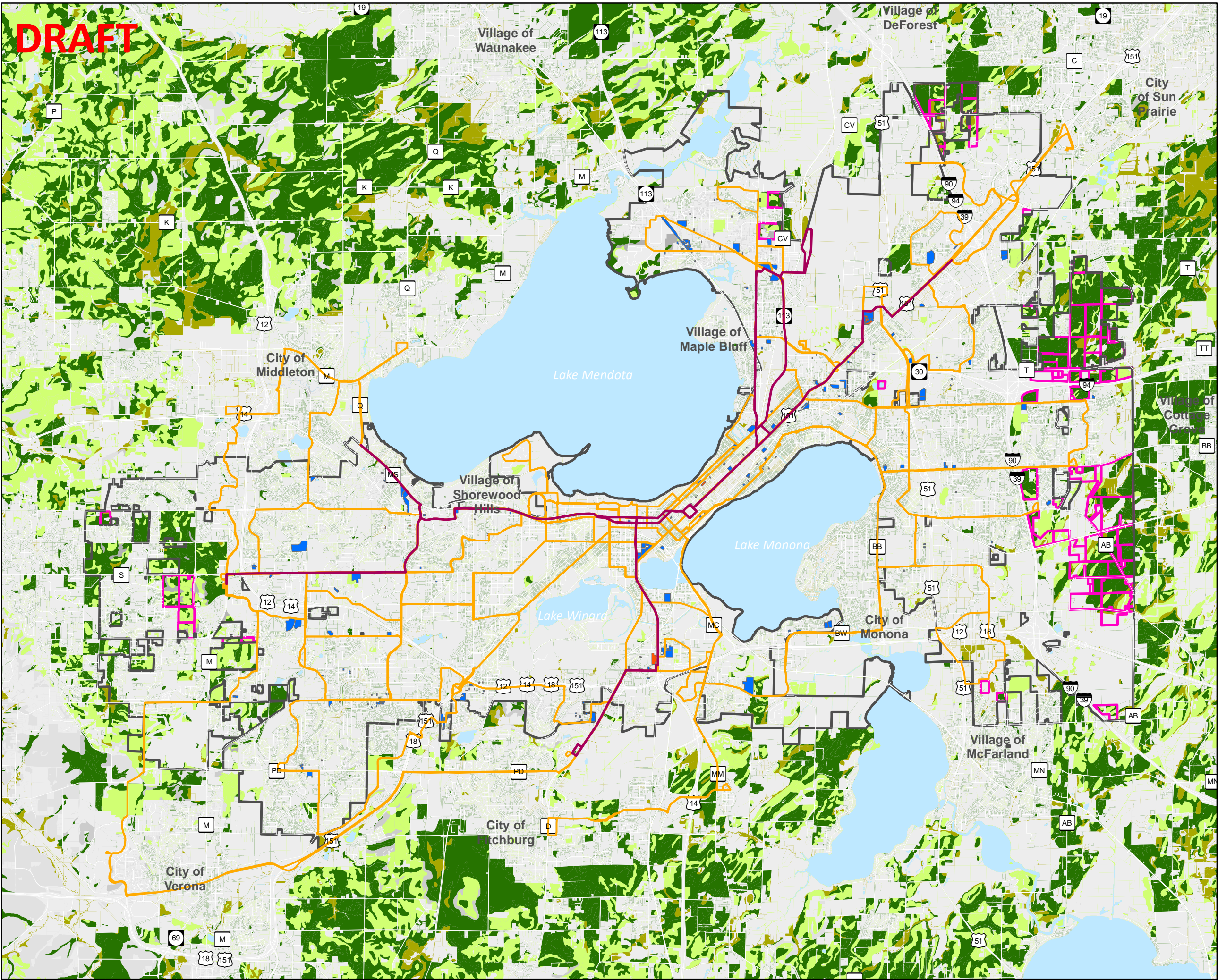
Productive Agriculture Soils

Legend

- Metro BRT Routes
- Metro Routes (June 2023)
- City Financed Affordable Housing Projects
- CDA Housing
- Privately Owned Parcels Zoned for Agriculture

Soils

- All areas are prime farmland
- Prime farmland if drained; Prime farmland if drained and not flooded; Prime farmland if not flooded
- Farmland of statewide importance; Not prime farmland



0 7,000 14,000 Feet

April 12, 2023

Data: City of Madison Planning Division, Dane County

