

LC

NOV 18 2019
2:15 P.M.
Planning & Community
& Economic Development



All applications must be filed by 4:30pm on the submission date with the Preservation Planner, the Department of Planning & Community & Economic Development, Planning Division, located at 126 S Hamilton Street. Applications submitted after the submission date or incomplete applications will be postponed to the next scheduled filing time. Submission deadlines can be viewed here: <https://www.cityofmadison.com/planning/documents/LandmarksDates.pdf>

Landmark Commission,

Hello, my name is Seth Statz. I am acting as General Contractor for Howard and Mary Paul. They are the owners of the property located at 417 Cantwell Court which is in the Third Lake Ridge local historic district. They have been through the process recently with a set of garage plans. They have since chosen a different set of plans so we are resubmitting plans for approval.

We would like to remove the existing garage in the rear yard. The garage that is in place now is sitting on wooden timbers with a dirt floor. The building is in disrepair. We would tear down garage, pour a concrete foundation, and rebuild a new garage in its place. The garage we build will be roughly 2 feet larger than the existing to conform with zoning. We intend to match the siding, windows, and roofing on the new garage to the existing house. The garage door will be an architectural line of insulated steel doors.

In addition to the garage replacement we would like to add a small addition on the rear of the house. It would serve the house as a back entry/mudroom and a half bath. It will be one story high and set on a concrete foundation. We will match the siding, window, roofing and doors to the existing house. And try to tie it into the house as much as possible. The new addition will require no demolition or alteration to the existing home except for siding removal.

Our goal is to create 1. a usable garage in place of the dilapidated garage that is there now and 2. to add a more usable entry to the house than what is now in place. With a new garage and the added use it will receive, the addition will be built serve that space and its increased demand. Thank you for your time and consideration. I will be glad to answer any questions that may arise.

Thank you, Seth Statz

Seth Statz Construction

4893 Pikes Peak Rd. Ridgeway, WI

(608) 347-0472

statzconstruction@gmail.com

DRAFTING
CM DESIGNS, LLC

- 1) These drawings represent the general design intent of the owner. These drawings are not to be used by the contractor, nor do they instruct the contractor regarding the methods or materials required for construction.
- 2) Coordination and suppliers shall provide specifications, appropriate engineering and shop drawings for work, and respective scope of work.
- 3) Dimensions indicate face of framing and/or exterior finish, not including interior finish.
- 4) Window & Door sizes are nominal and center of opening. Rough opening and frame sizes provided by supplier.
- 5) Kitchen and bath cabinets are to be provided by supplier. Detailed layout provided by supplier.



Previous Revisions
Current Plan Date 10/30/19
Sheet Number A1
Title Page

1) These drawings represent the general design intent of the project. It is the responsibility of the client to not include engineering, not to they instruct the contractor to construct or material required for construction.

2) Contractors and suppliers shall provide appropriate engineering and shop drawings for work, respective scope of work.

3) Dimensions include face of framing unless otherwise noted. Foundation not including interior or exterior finishes.

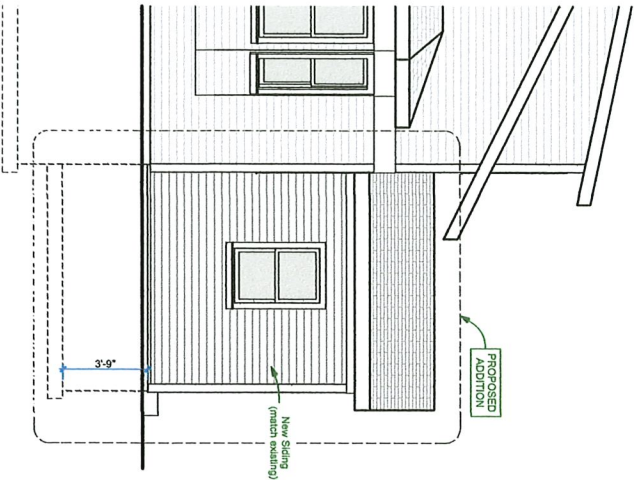
4) Window & Door sizes are dimensioned to center of opening. Rough opening by manufacturer provided by project.

5) Kitchen and bath fixtures are shown as concept. Detailed inputs provided by supplier.

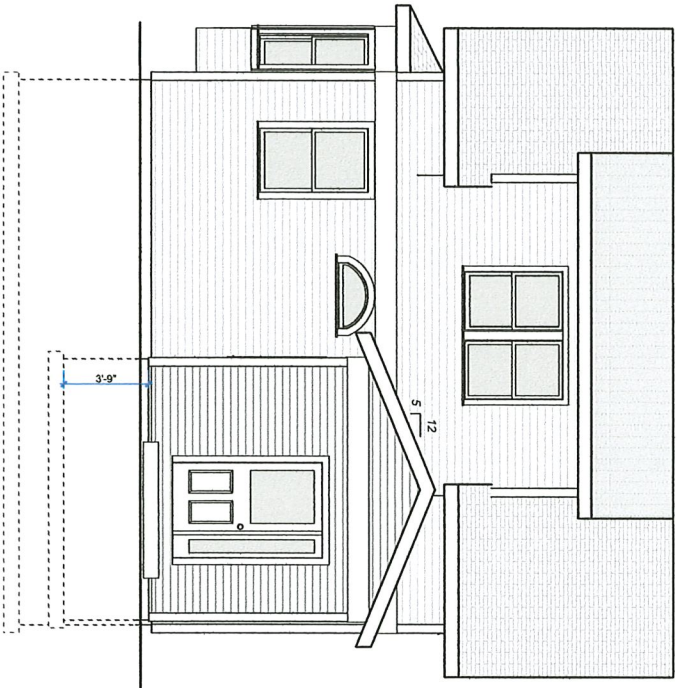
Project Owner

Pual Residence - Back Entry Addition

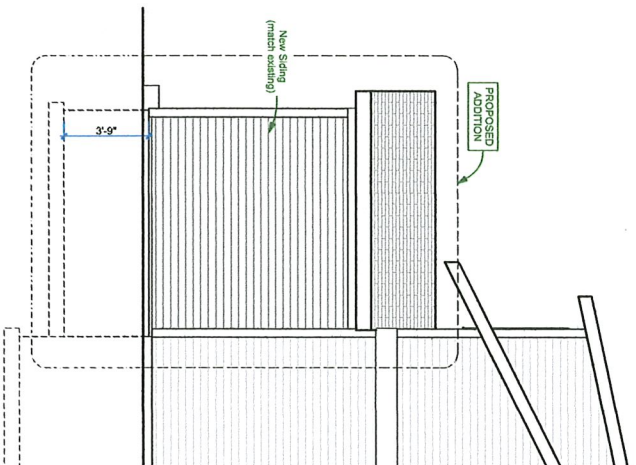
Seth Statz Construction
Ridgeway, WI 53582



S South Elevation
SCALE: 3/16" = 1'-0"



E East Elevation
SCALE: 3/16" = 1'-0"



N North Elevation
SCALE: 3/16" = 1'-0"

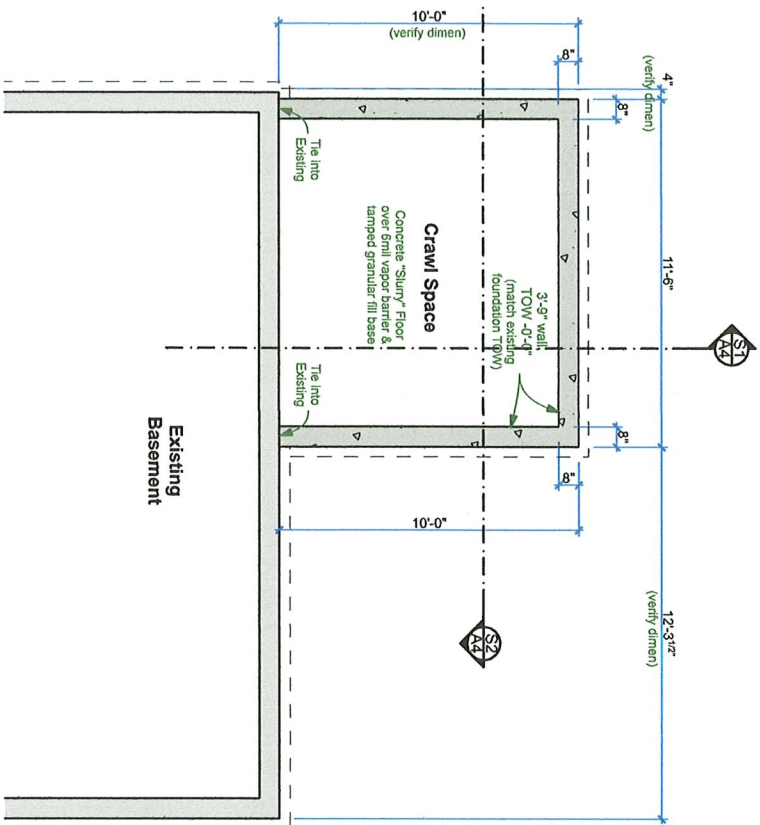
Previous Revisions

Current Plan Date
10/30/19

Sheet Number

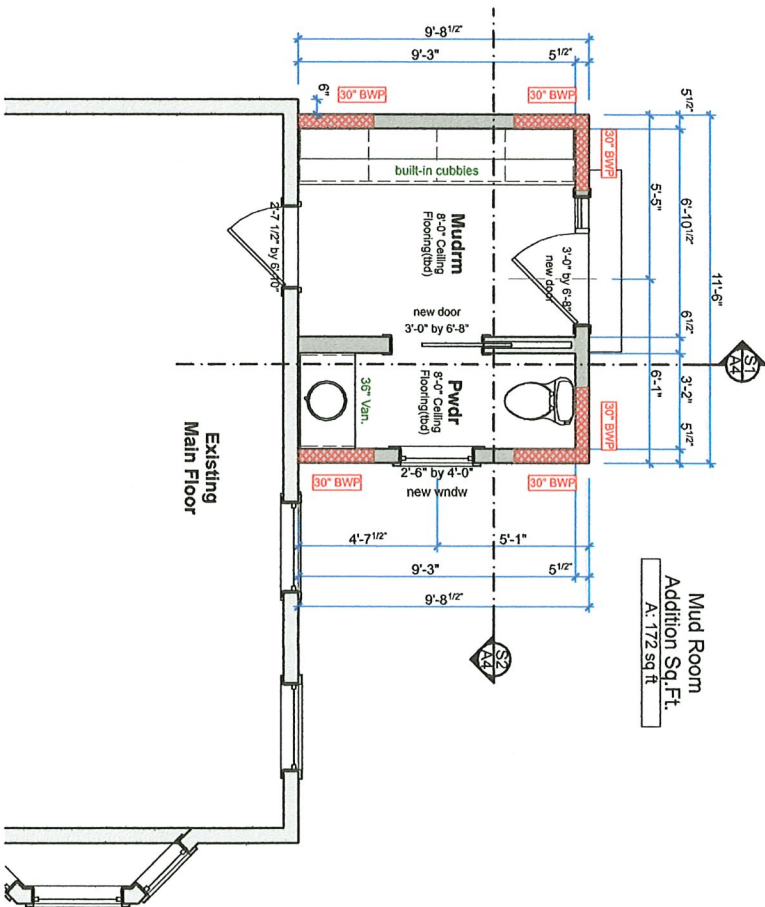
A3

Elevations



Foundation Plan

SCALE: 1/4" = 1'-0"



1st Floor Plan - Addition
SCALE: 1/4" = 1'-0"

Seth Statz Construction
, Ridgeway, WI 53582

- 1) These drawings represent the general design intent of the project. Drawings to be included are not to include engineering, nor do they instruct the contractor regarding the methods or materials required for construction.
- 2) Contractor and suppliers shall provide specifications appropriate for experienced engineering consultants to review and approve prior to their respective scope of work.
- 3) Dimensions indicate the location of the foundation not including interior or exterior finishes.
- 4) Window & Door sizes shall be as shown and dimensions to be determined in concert of openings. Rough opening and frame sizes provided by supplier.
- 5) Kitchen and bath layout is shown in concept. Detailed layout provided by supplier.

Project / Owner

Current Plan Date	10/30/19
Sheet Number	

A2

- 1) These drawings represent the general design intent of the owner. These drawings are not for engineering, nor do they instruct the contractor regarding the methods or materials required for construction.
- 2) Contractor and suppliers shall provide specifications, appropriate engineering shop drawings for their respective scope of work.
- 3) Dimensions indicate basis of framing and include interior or exterior finishes.
- 4) Window & Door sizes are nominal and are based on the center of opening. Rough opening and frame sizes provided by supplier.
- 5) Kitchen and bath cabinets are to be standard concept. Detailed layout provided by supplier.

***Pual Residence -
Back Entry Addition***

Seth Statz Construction
, Ridgeway, WI 53582

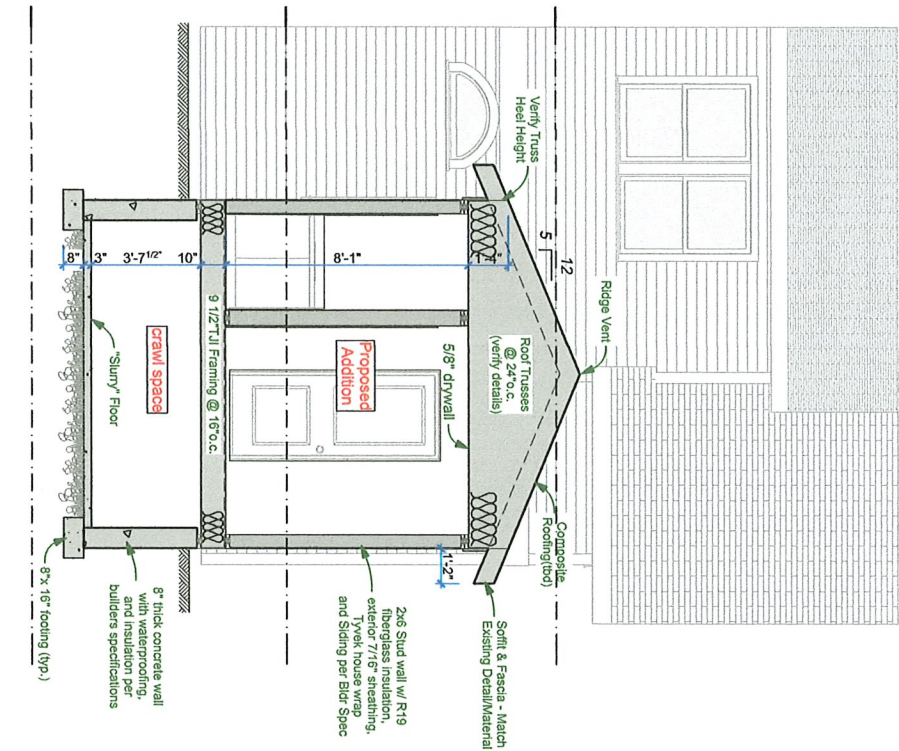
Previous Revisions

Current Plain Date
10/30/19

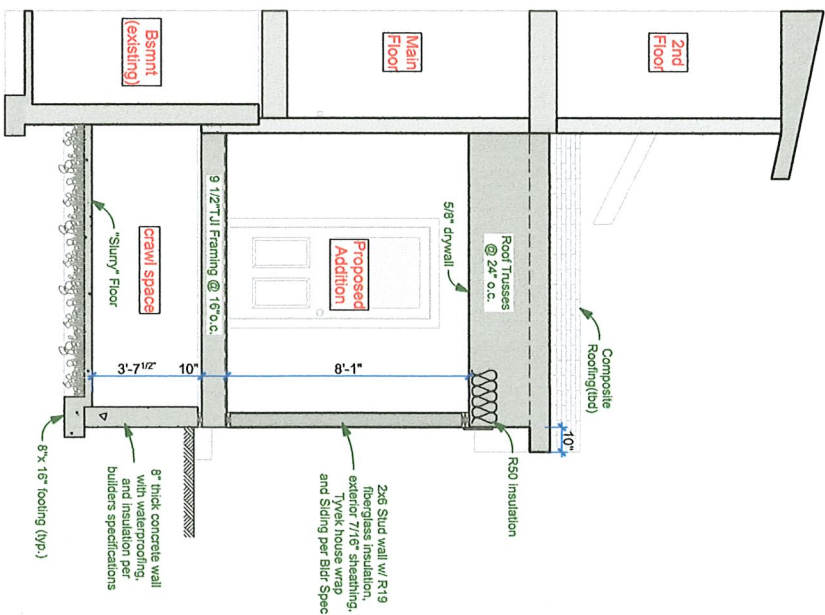
Sheet Number

A4

Section/Details



Cross Section
SCALE: 1/4" = 1'-0"

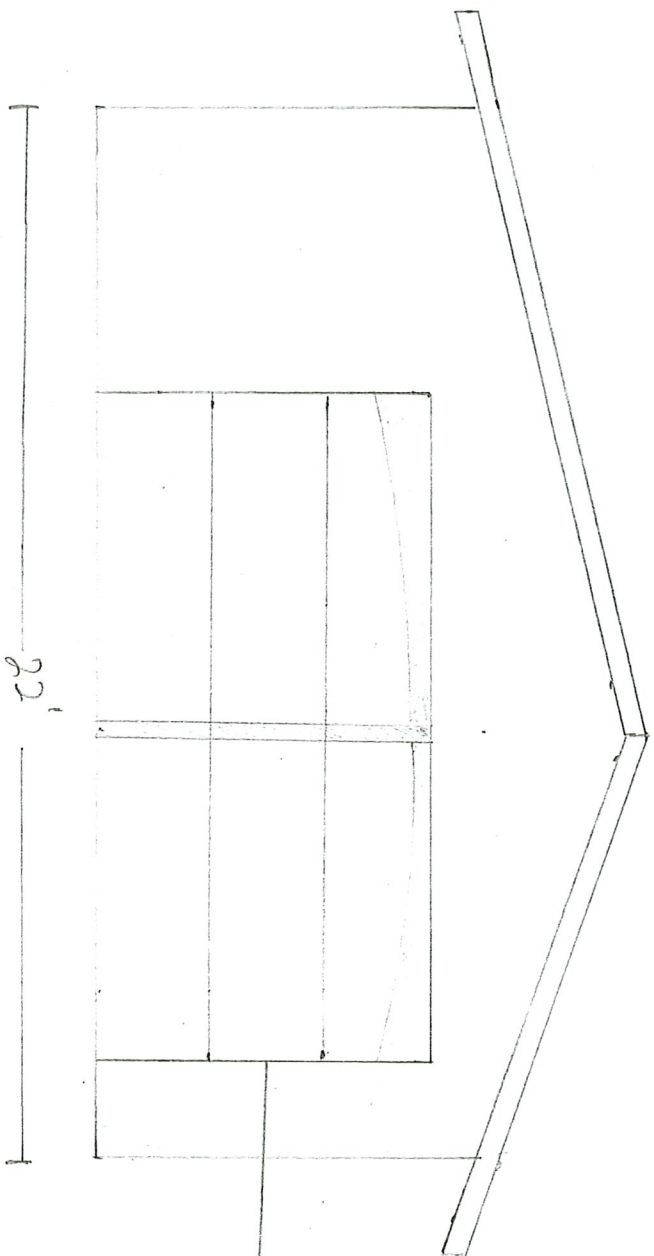
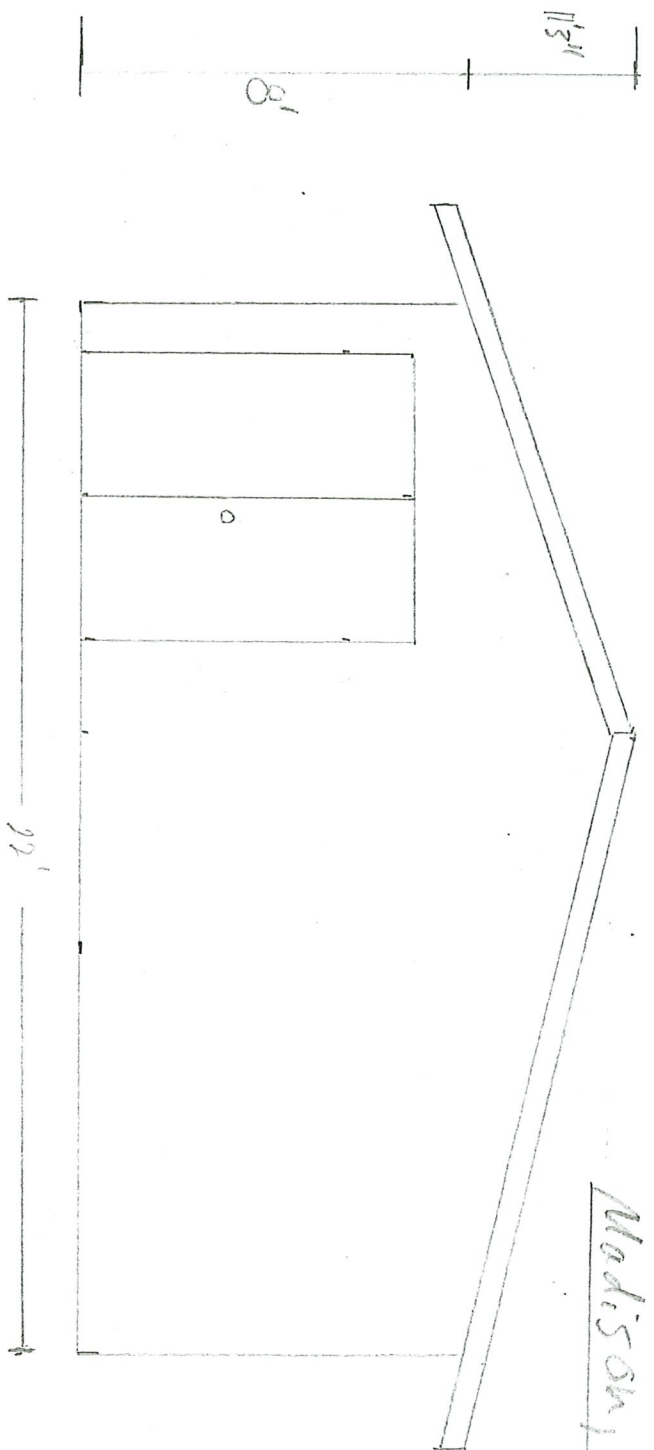


S1 Building Section
SCALE: 1/4" = 1'-0"

A4

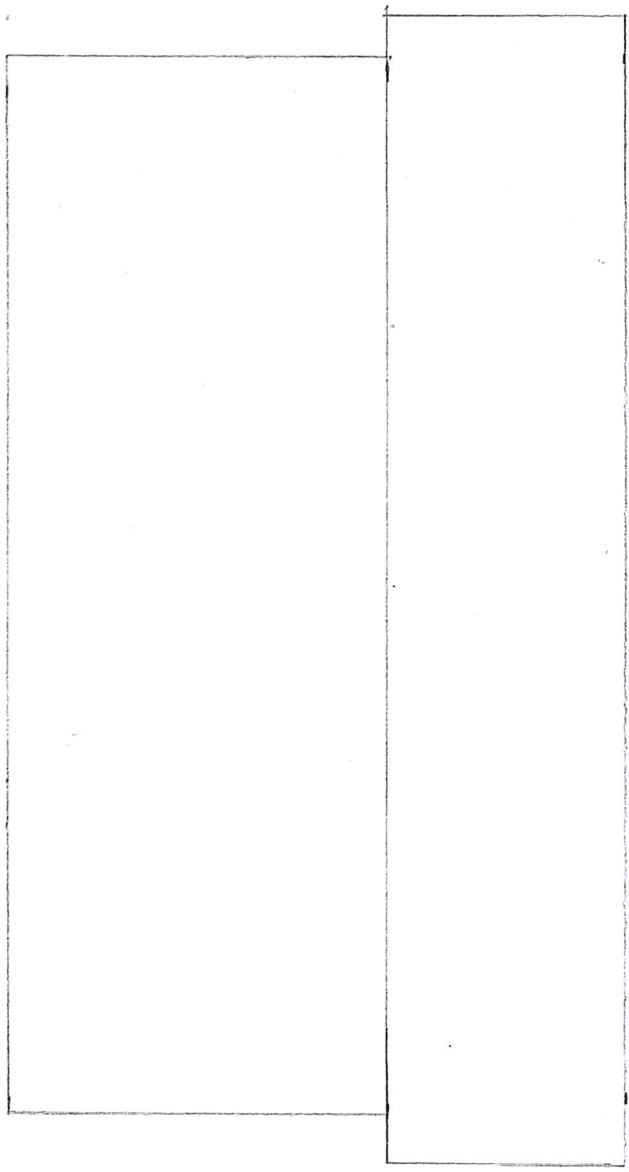
417 Cantwell Court

Madison, WI 53703

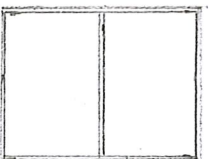
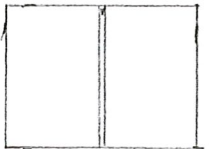


Steel insulated door
with decorative panels
Wayne Dalton 6800 series

1/4" = 1' Scale



Asphalt Roofing
Obens Corning
Duration Shingles
(Summer Harvest)



4" Exposure Smooth
Vinyl Siding - Tomato House

Double hung windows
to match house.

22'













[Return to Pella Windows Features and Options \(/windows/features-and-options\)](#)

[Print](#) [Send \(mailto:To Email&subject=Thought you'd be interested in this window and door information&body=Found this excellent information on professional.pella.com and thought it would be helpful to you. Pella has complete window and door product information, performance specifications and interesting case studies on this site. check it out.%0D%0A%0D%0Ahttps://professional.pella.com/windows/features-and-options/exterior-finishes/\)](#)

Windows Exterior Finishes

Exterior options to match any building's architectural style

[Get A Quote \(https://forms.pella.com/project-request/\)](https://forms.pella.com/project-request/)

Aluminum-Clad
Wood

Aluminum-Clad Wood Exteriors

Pella gives you extraordinary color flexibility with a range of exterior aluminum-cladding color options. And, there are no setup charges or minimum quantities for any Pella color option.

Wood

Fiberglass

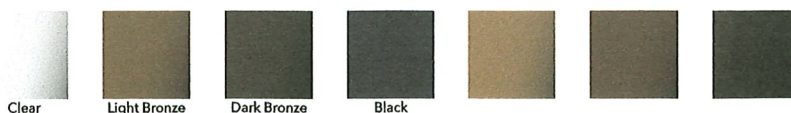
Vinyl

Exterior Aluminum-Cladding Paint Colors



**Available on Architect Series products only.*

Exterior Aluminum-Cladding Anodized Finishes



A local Pella team member is ready to help you with your project.

ENERGY STAR®



Only Pella had the wide product portfolio needed to meet the design needs for the South Franklin

Circle assisted living community - and offered features designed to ensure comfort, convenience and safety for its residents.

Visit the Project Gallery to view case studies with a wide variety of exterior finishes.

[Project Gallery \(/project-gallery\)](#)

Custom
Champagne

Custom
Medium
Bronze

Custom Extra
Dark Bronze



Custom
Copper

	Architect Series® Reserve™	Architect Series®	Pella® Lifestyle Series
Exterior Options			
Aluminum-clad	X	X	X
Primed (Pine or Mahogany)	X ¹	X ¹	
Unfinished (Mahogany)	X ¹	X ¹	
Exterior Aluminum-Cladding Finishes			
27 paint colors	X	X	
13 paint colors			X ²
Custom paint colors (virtually unlimited)	X	X	
70% fluoropolymer (broad range of colors available)	X	X	
Anodized finishes	X		

¹Available on select products.

²Dual-pane products available in White, Tan, Putty, Brown, Poplar White, Portobello, Hartford Green, Morning Sky Gray, Brick Red and Black. Triple-pane products also available in Almond, Fossil and Iron Ore.

Because we're always working to further refine our products and develop new ones, specifications may change without notice.

Exterior Finish Options

All Pella aluminum-clad colors are available in a variety of finish options, including:

- Durable, low-maintenance EnduraClad® exteriors for most projects where resistance to fading, chalking, chemicals and abrasion is needed.
- 70% fluoropolymer resin-based EnduraClad Plus¹ for select projects, where a high degree of resistance to fading, chalking, chemicals and corrosion is needed – and only full-strength 70% fluoropolymer paints can deliver.
- Anodized aluminum protective exterior finish, for projects that require a finish that will never chalk, flake, or blister, with a clean matte or metallic look. Meets the requirements of AAMA 611 for Class I Anodized.³

All finish options meet the performance requirements of AAMA 2603, AAMA 2604, AAMA 2605, and/or AAMA 611. EnduraClad Seacoast warranty also available.

Wood with EnduraGuard® Wood Protection

Pella's EnduraGuard® wood protection formula has three active ingredients. This powerful combination, together with our immersion-treatment method, helps ensure strong protection on every exterior wood surface of our products. The result is advanced protection against the effects of moisture, decay and stains from mold and mildew.



³Anodized product is not covered by warranty in seacoast applications.

Window Product Features and Information

[Shapes and Sizes \(/windows/features-and-options/shapes-and-sizes\)](#)
[Combination Assemblies \(/windows/features-and-options/combination-assemblies\)](#)
[Materials \(/windows/features-and-options/materials\)](#)
[Exterior Finishes \(/windows/features-and-options/exterior-finishes\)](#)

[Interior Finishes \(/windows/features-and-options/interior-finishes\)](#)
[Glazing \(/windows/features-and-options/glazing\)](#)
[Impact Resistant \(/windows/features-and-options/impact-resistant\)](#)
[Between-the-Glass Options \(/windows/features-and-options/between-the-glass\)](#)

[Grilles and Muntins \(/windows/features-and-options/grilles\)](#)
[Hardware \(/windows/features-and-options/hardware\)](#)
[Screens \(/windows/features-and-options/screens\)](#)
[Leed Rating System \(/support/leed\)](#)

Sign up for news, product updates and more

Your email here

Zip Code

Submit



P R O F E S S I O N A L

102 MAIN STREET | PELLA, IOWA 50219 | 866-209-4260 | PELLA.PROFESSIONAL.COM

Restoration Classic™

Vinyl Siding

General Description: Restoration Classic™ Siding provides the look of wood siding, but does not require the upkeep common to wood. Restoration Classic Siding is available in a selection of profiles and finishes that offer the industry's best real wood replication. Restoration Classic siding is appropriate for use in new construction for single family homes, multi- housing projects and light commercial developments. Restoration Classic is also an ideal product for remodeling.

Styles:

Profile	Finish	Panel Projection	Wall Thickness (Nominal)	Lock Design	Colors	Accessory Pocket
Double 4" Clapboard	Select Cedar	5/8	.044"	DuraLock™ post-formed positive	29	½", 5/8" or ¾"
Double 4-1/2"	Select Cedar	5/8	.044"	DuraLock™ post-formed positive	25	½", 5/8" or ¾"
Double 5" Clapboard	Select Cedar	5/8"	.044"	DuraLock™ post-formed positive	16	½", 5/8" or ¾"
Triple 3" Clapboard	Smooth	5/8	.044"	DuraLock™ post-formed positive	13	½", 5/8" or ¾"
Double 4-1/2"	Smooth	5/8	.044"	DuraLock™ post-formed positive	13	½", 5/8" or ¾"

Colors: Restoration Classic siding profiles are available in the industry's widest selection of colors. All colors are Spectrophotometer controlled and utilize exclusive PermaColor™ color science.

Colonial White	Light Maple	Castle Stone	Suede	Forest	Sable Brown
Autumn Yellow	Savannah Wicker	Cypress	Autumn Red	Hearthstone	Slate
Desert Tan	Seagrass	Granite Gray	Charcoal Gray	Midnight Blue	Spruce
Heritage Cream	Sterling Gray	Natural Clay	Espresso	Mountain Cedar	Terra Cotta
Herringbone	Buckskin	Oxford Blue	Flagstone	Pacific Blue	

*Color availability varies by profiles - check Product Catalog for detail.

STUDfinder™: The patented STUDfinder Installation System combines precisely engineered nail slot locations with graphics. Nail slots are positioned 16" on center to allow for alignment with studs. STUDfinder graphics centered at each slot provide a quick and easy guide to help locate studs.

RigidForm™: Restoration Classic RigidForm™ technology features a stiff, double-thick .088" nail hem for a straighter-on-the-wall appearance and windload performance.

Accessories: CertainTeed manufactures a wide range of siding accessories that are compatible with Restoration Classic siding styles and colors. Accessory products include installation components, soffit, window and door trim, corner lineals, corner systems and decorative moldings.

Composition: Restoration Classic siding products are produced using CertaVin™ custom-formulated PVC resin. This resin is produced exclusively by CertainTeed, allowing CertainTeed to maintain the high quality of its siding products.

Technical Data: Restoration Classic siding is in compliance with ASTM specification for Rigid Polyvinyl Chloride (PVC) Siding D 3679, and the requirements of section R703.11 of the International Residential Code, and section 1404.14 of the International Building Code. Restoration Classic siding meets or exceeds the properties noted in Table 1

Table 1

ASTM E 84	Meets Class A flame spread requirements as tested according to ASTM E84.
ASTM D 635	Material is self-extinguishing with no measurable extent of burn when tested in accordance with this specification.
NFPA 268	Radiant Heat Test - Ignition Resistance of Exterior Walls - Conclusion that CertainTeed met the conditions for allowable use as specified in section 1406 of the International Building Code.

Important Fire Safety Information: When rigid vinyl siding is exposed to significant heat or flame, the vinyl will soften, sag, melt or burn, and may thereby expose material underneath. Care must be exercised when selecting underlayment materials because many underlayment materials are made from organic materials that are combustible. You should ascertain the fire properties of underlayment materials prior to installation. All materials should be installed in accordance with local, state and federal Building Code and fire regulations.

Wind Load Testing: CertainTeed Restoration Classic™ Double 4" siding has been tested per ASTM D 5206 standard test method for wind load resistance to withstand negative windload pressures of 65 psf, which equates to 223 mph (V_{ASD}) and 288 mph (V_{ULT}), per VSI windspeed calculation guidelines, when installed with nails positioned 16" on center. Check with your local building inspector for wind load requirements in your area on the type of structure you are building.

Documents: CertainTeed Vinyl Siding meets the requirements of one or more of the following specifications.

Texas Department of Insurance Product Evaluation EC-11

Conforms to ASTM Specification D3679

Florida BCIS Approval FL1573

ICC-ES Evaluation Report ESR-1066

For specific product evaluation/approval information, call 800-233-8990.

Installation: Prior to commencing work, verify governing dimensions of building, examine, clean and repair, if necessary, any adjoining work on which the siding is in any way dependent for its proper installation. Sheathing materials must have an acceptable working surface. Siding, soffit and accessories shall be installed in accordance with the latest editions of CertainTeed installation manuals on siding and soffit. Installation manuals are available from CertainTeed and its distributors.

Warranty: CertainTeed supports Restoration Classic siding products with a Lifetime Limited Warranty including PermaColor Lifetime Fade Protection to the original homeowner. The warranty is transferable if the home is sold.

Technical Services: CertainTeed maintains an Architectural Services staff to assist building professionals with questions regarding CertainTeed siding products. Call 800-233-8990 for samples and answers to technical or installation questions.

Sample Short Form Specification: Siding as shown on drawings or specified herein shall be Restoration Classic Vinyl Siding as manufactured by CertainTeed Corporation, Malvern, PA. Installation shall be in accordance with manufacturer's instructions.

Three-part Format Specifications: Long form specifications in three-part format are available from CertainTeed by calling our Architectural Services Staff at 800-233-8990. These specifications are also available on our website at certainteed.com.



CertainTeed Corporation
20 Moores Road
Malvern, PA 19355
certainteed.com
© 01/19

Wayne
Dalton®
GARAGE DOORS

M O D E L

6600

CARRIAGE HOUSE STEEL



Springfield panel, Custom painted after installation, Framed Insert Stockbridge windows

AFTER

BEFORE



Bellview Arched panel, Brown/White finish, Decorative hardware



Garage Door Design Center

To see this door on your home, visit wayne-dalton.com, or download our app, and try our Garage Door Design Center. Upload a photo of your home and experiment with panel designs, color options, window styles and decorative hardware designs. Instant curb appeal awaits you with just a click of your mouse.

Wayne Dalton.
GARAGE DOORS

DISTRIBUTED BY:

2501 S. State Hwy. 121 Bus., Ste 200
Lewisville, TX 75067

wayne-dalton.com



© 2019 Wayne Dalton, a Division of Overhead Door Corporation. Consistent with our policy of continuing product improvement, we reserve the right to change product specifications without notice or obligation. Item 351657 02/19

unique.
durable.
stylish.

Made with two layers of steel,
polyurethane foam insulation and
DecaTrim™ II Overlays.

The Model 6600 is not only durable,
but a unique way to add style and
curb appeal to your home.



*Brunswick panel, White finish, Routed
Stockton windows, Decorative hardware*

PERFORMANCE FEATURES



Insulation

Model 6600 comes with foamed-in-place polyurethane insulation with an R-value of 12.12*, which can improve the thermal efficiency of your garage space, reduce street noise and make the door operate more quietly.



Durable DecaTrim™ II Overlays

These overlay boards are specially treated to resist termites, weather and fungal decay.

Joint Seals

Snug fitting tongue-and-groove section joints reduces wind and weather from entering the garage.

High Cycle Spring Option

Choose a 25,000 cycle spring for almost twice the life of a standard torsion spring.

Heavy Duty Hinges

Attractive 14-gauge heavy duty hinges provide maximum strength between sections, stability and smoother door operation.

Quiet Rollers

Ball-bearing rollers with nylon wheels and solid steel shafts provide years of smooth, quiet and dependable service.



Windsafe™

Available with optional hardware and reinforcement for high-wind regions. Please consult your dealer for details.

Warranty

Model 6600 offers a Limited Lifetime Warranty on the steel skin and a two year warranty against delamination on factory attached overlay material. See full text of warranty for details.



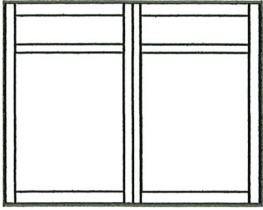
*Wayne Dalton uses a calculated door section R-value for our insulated doors.

1 Choose Your Style

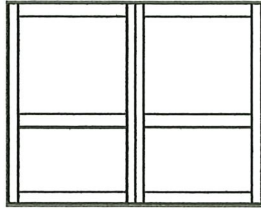
All door top sections are available in arched or square designs.

Double car door designs are equivalent to 2 single-car doors side by side.

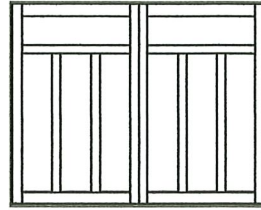
Square Top



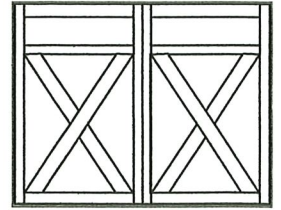
Arlington



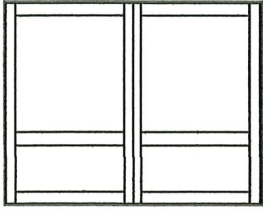
Ashburn



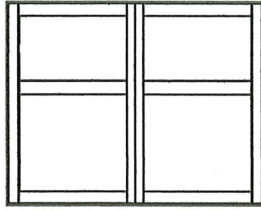
Brunswick



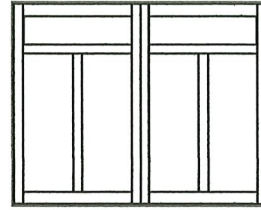
Lexington



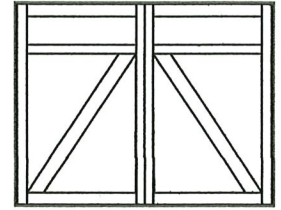
Richmond



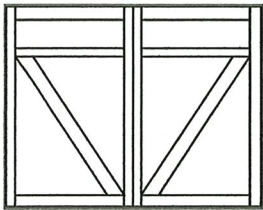
Savannah



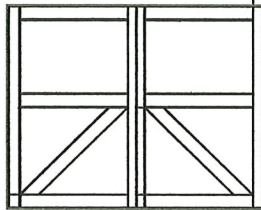
Somerset



Springfield



Bellview

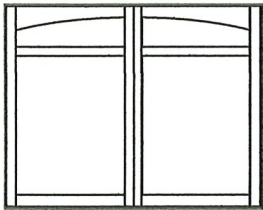


Kingston

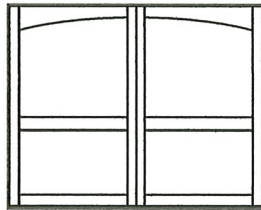


Westfield

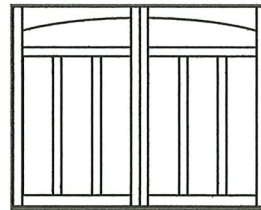
Arched Top (windows not available with arched top overlay designs)



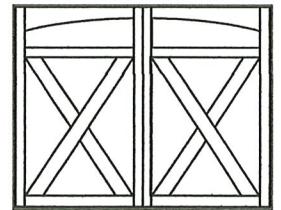
Arlington



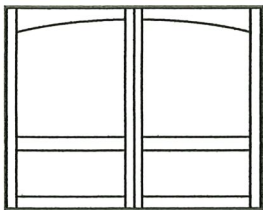
Ashburn



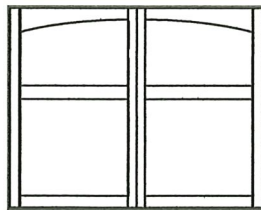
Brunswick



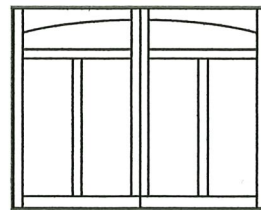
Lexington



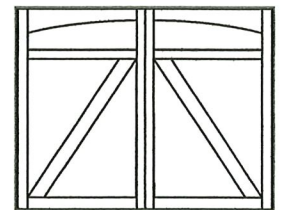
Richmond



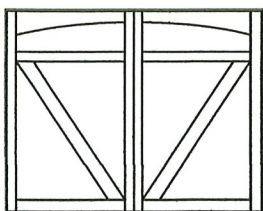
Savannah



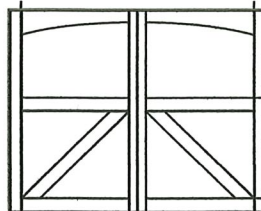
Somerset



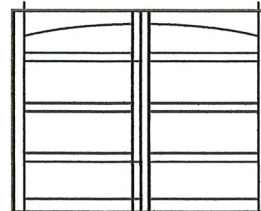
Springfield



Bellview



Kingston



Westfield

2 Choose Your Color

DecaTrim™ II overlays are provided in White only. For a two-toned look, choose from, Almond, Taupe, Terra Bronze, Brown or Black as shown below.



White/White



Almond/White



Taupe/White



Terra Bronze/White



Brown/White



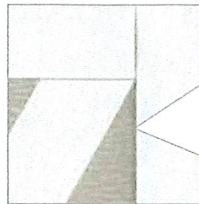
Black/White

Actual colors may vary from brochure due to fluctuations in the printing process. Always request a color sample from your Dealer for accurate color matching.

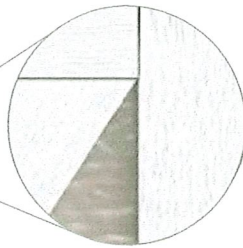
DecaTrim™ II Overlay Texture Options



Smooth



Wood Grain



3 Choose Your Windows

Window patterns are shown for an 8' wide single-car door. Spacing of windows may change depending on door size. Not all windows are available in all door sizes.

Routed windows

Routed windows are only available with smooth overlay trim.



Clear Long



Stockton Arch



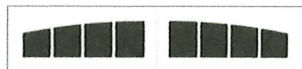
Stockton



Stockbridge



Somerton



Wyndbridge

Framed Insert windows

Framed Insert windows are available for both smooth and wood grain overlays.



Clear Long



Stockton Arch



Stockton



Stockbridge



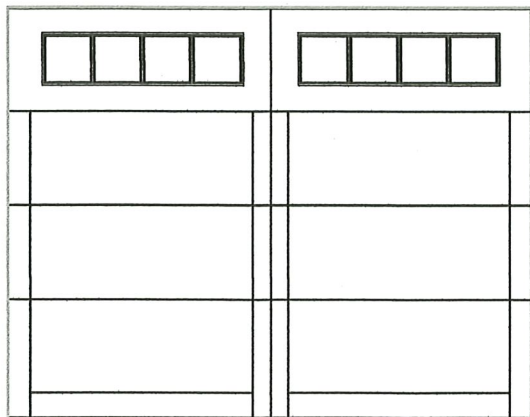
Somerton



Wyndbridge

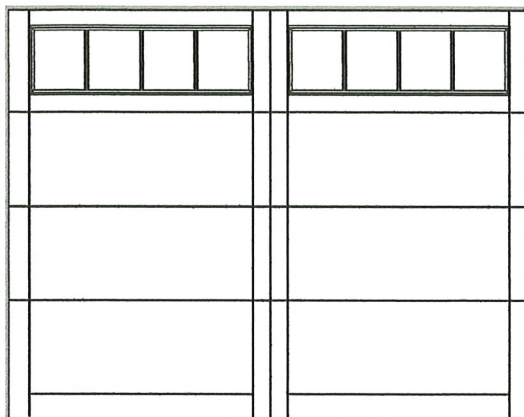
Window Comparison

Doors built with the **Routed windows** use a clean top section design where the wood overlay is routed from a wood face panel.



Arlington panel with Routed Stockbridge windows

Doors with **Framed Insert windows** use a classic wood door design with the top section constructed from wood overlay boards.



Arlington panel with Framed Insert Stockbridge windows

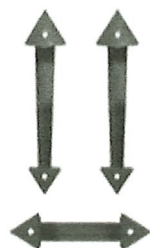
4 Choose Your Hardware



Spear

Two Spear pull handles and one bottom lift handle are included for single car doors. Double car doors come with two sets of decorative hardware (four Spear pull handles and two bottom lift handles). Decorative hinges are also available, please see dealer for details.

Additional hardware designs are shown below.



Arrow



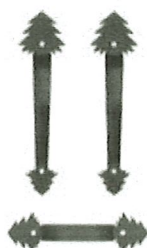
Aspen



Bean



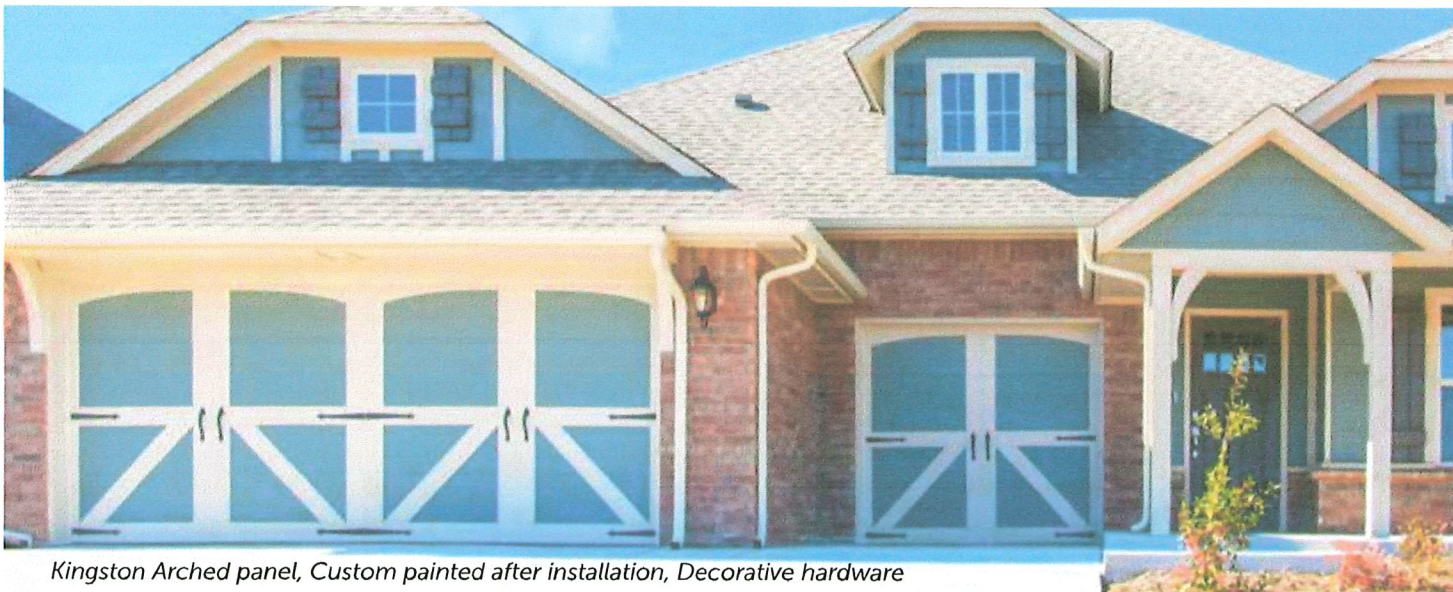
Barcelona



Conifer



Fleur-de-Lis



Kingston Arched panel, Custom painted after installation, Decorative hardware

WANT TO TURN UP THE COLOR ON YOUR ROOF?

Update it with our TruDefinition™ Duration® Designer Colors Collection Shingles. They offer the same exceptional performance—in seven unique colors you won't find elsewhere.

To see how they can transform the look of your home, just ask your contractor or visit www.roofing.owenscorning.com.



Aged Copper†

Merlot†

Pacific Wave†

Sand Dune†

Sedona Canyon†

Storm Cloud†

Summer Harvest†

Want to know more about Owens Corning™ products or find an Owens Corning™ Preferred Contractor in your area? It's easy to reach us:

1-800-GET-PINK® | www.roofing.owenscorning.com



OWENS CORNING ROOFING AND ASPHALT, LLC
ONE OWENS CORNING PARKWAY
TOLEDO, OHIO, USA 43659

1-800-GET-PINK®
www.roofing.owenscorning.com

Pub. No. 10013980-A. Printed in U.S.A. October 2011. THE PINK PANTHER™ & © 1964–2011 Metro-Goldwyn-Mayer Studios Inc. All Rights Reserved. The color PINK is a registered trademark of Owens Corning. ©2011 Owens Corning.

(Brookville, Kearny, Medina, Minneapolis, Summit)





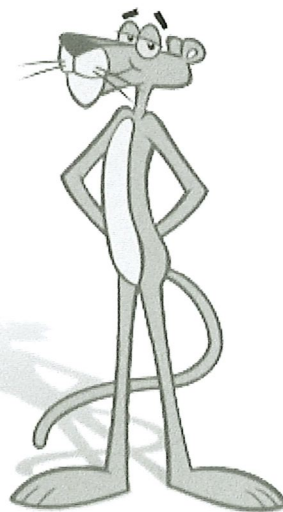
HOME SWEET HOME

Your home is your sanctuary. It's the place where you want to feel the most comfortable. Safe. Protected. But no matter how much you love your house, it seems the work is never completely done. And if purchasing a new roof is on your to-do list, it may seem like a daunting task—especially if your roof is already damaged or leaking. Since a roof plays such an important role in protecting you and your family from the elements, you realize that you can't let the damage get out of hand.

Don't worry, we know that a roof replacement project is a big, important decision. You can feel confident about choosing our roofing products—Owens Corning has been a recognized leader in the building industry for over 70 years. In fact, we're America's #1 roofing brand.** Not only can we help you choose the right shingle and roofing system components, we can also help you select the right contractor for the job. An Owens Corning™ Preferred Contractor.

Together we can make this a positive experience—an opportunity, really. This is your chance to choose a roof that not only has outstanding performance, but also has exceptional beauty. So for years to come, you'll feel great every time you pull in the driveway.

Safe. Protected. Home.



ENERGY STAR® IS FOR ROOFS TOO



Similar to the energy-efficient appliances in your home, roofing products can provide energy-saving qualities.

Owens Corning™ ENERGY STAR® rated shingles can help reduce your energy bills when installed properly. These shingles reflect solar energy, decreasing the amount of heat transferred to a home's interior—and the amount of air conditioning needed to keep it comfortable. Actual savings will vary based on geographic location and individual building characteristics. Call 1-800-GET-PINK® or 1-888-STAR-YES for more information.

Product Attributes

Warranty Length*

Limited Lifetime**

Wind Resistance Limited Warranty*

130 MPH

Algae Resistance Limited Warranty*

10 Years

Tru PROtection® Non-Prorated Limited Warranty* Period

10 Years



TruDefinition™ Duration® Shingles Product Specifications

Nominal Size	13 1/4" x 39 3/8"
Exposure	5 5/8"
Shingles per Square	64
Bundles per Square	3
Coverage per Square	98.4 sq. ft.

Applicable Standards and Codes

ASTM E 108, Class A Fire	ASTM D 3462
ASTM D 3161, Class F Wind	ASTM D 228
ASTM D 7158, Class H Wind	UL 790, Class A
ASTM D 3018, Type 1	CSA 123.5 ¹

* See actual warranty for complete details, limitations and requirements.

** Based on 2011 Roofing Brand Awareness Survey by Owens Corning Roofing & Asphalt, LLC.

† Owens Corning strives to accurately reproduce photographs of shingles. Due to manufacturing variances, the limitations of the printing process and the variations in natural lighting, actual shingle colors and granule blends may vary from the photo. The pitch of your roof can also impact how a shingle looks on your home. We suggest that you view a roofing display or several shingles to get a better idea of the actual color. To accurately judge your shingle and color choice, we recommend that you view it on an actual roof with a pitch similar to your own roof prior to making your final selection. Color availability subject to change without notice. Ask your professional roofing contractor for samples of colors available in your area.

‡ This illustration depicts Triple Layer Protection and the amount of Triple Layer Protection may vary on a shingle-to-shingle basis.

§ Tru-Bond is a proprietary premium weathering-grade asphalt sealant that is blended by Owens Corning Roofing & Asphalt, LLC.

¶ 40-Year Limited Warranty on commercial projects.

§ Color not available in Québec.

¹ Where allowed by code.

² Applicable in Brockville, Kearny, Medina and Minneapolis Service Areas only.

Preferred Contractors are independent contractors and are neither affiliates nor agents of Owens Corning Roofing & Asphalt, LLC, or its affiliated companies.

SureNail Technology U.S. Patent 7,836,654 and other patents pending.

ENERGY STAR and the ENERGY STAR mark are registered trademarks of the U.S. Environmental Protection Agency.

ADDITIONAL COLORS AVAILABLE BY SERVICE AREA—see map below

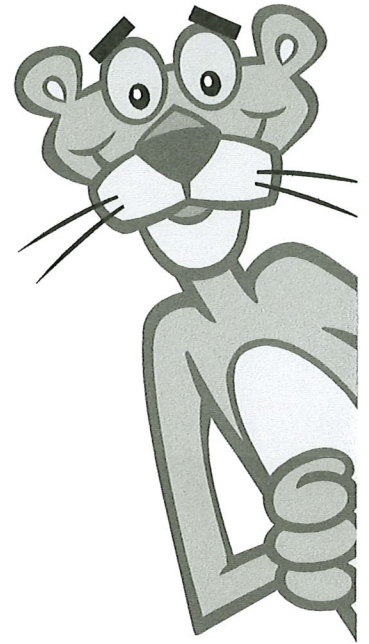


Estate Gray†



Slatestone Gray†

Not available in Service Areas 4, 5, 7, 9.



Terra Cotta†

COLOR AVAILABILITY MAP

