



OWNER/ DEVELOPER:
LEGACY SENIOR LIVING, LLC
2235 CANDIES LANE
CLEVELAND, TN 37312
PHONE: 423-478-8071
FAX: 423-478-8072
CONTACT: BARRY RAY
EMAIL: bray@legacyl.net



ARCHITECT & INTERIOR DESIGNER:
GARY BRINK AND ASSOCIATES, INC.
2248 DEMING WAY , SUITE 120
MIDDLETON, WI 53562
PHONE: 608-829-1750
FAX: 608-829-3056
CONTACT: JEFF BRENKUS
EMAIL: jeff.brenkus@garybrink.com



GENERAL CONTRACTOR:
TRI NORTH BUILDERS
2625 RESEARCH PARK DRIVE
FITCHBURG, WI 53711
PHONE: 608-271-8717
FAX: 608-271-3354
CONTACT: DARREN NOAK
EMAIL: dnoak@tri-north.com



SCOPE OF PROJECT:

THE PROPOSED PROJECT INVOLVES THE REFINISHING / REFRESHING OF THE EXISTING MASONRY AND CAST STONE BY SEALING THE ENTIRE SURFACE WITH 25 YEAR WARRANTIED MINERAL STAIN TO FURTHER PRESERVE THE EXISTING SURFACES FROM FURTHER ENVIRONMENTAL CONDITIONAL DAMAGES. FOR OVER 50 YEARS OF LIFE, THE MASONRY SURFACES AND MASONRY JOINTS HAVE DEVELOPED HAIRLINE, POUROUS CAPILARY AVENUES FOR MOISTURE TO PERMEATE TO THE CAVITIES AND CREATE CURRENT AND FUTURE COSMETIC SKIN FAILURES. THE USE OF THIS PRODUCT TO PREVENT FURTHER MOISTURE PENETRATION WILL ALLOW FOR INCREASED EXTERIOR SKIN LONGEVITY AND A FRESH NEW LOOK TO A BUILDING THAT HAS HAD MANY MISMATCHED ADDITIONS. THE COST OF REPLACEMENT OF THE ENTIRE SKIN SYSTEM IS PROHIBITIVE FOR A PROJECT THIS SIZE.

SHEET INDEX

01	COVER SHEET & CONTACTS
02	SITE AERIAL IMAGES
03	EXISTING BUILDING PHOTOS
04	BEFORE AND AFTER PHOTOS
A1	EXISTING SITE PLAN
A2	EXTERIOR ELEVATIONS
A3	EXTERIOR ELEVATIONS
A4	EXTERIOR ELEVATIONS
A5	EXTERIOR ELEVATIONS
A6	EXTERIOR ELEVATIONS
A7	EXTERIOR ELEVATIONS
A8	EXTERIOR ELEVATIONS
A9	EXTERIOR ELEVATIONS
A10	EXTERIOR ELEVATIONS
A11	EXTERIOR ELEVATIONS
A12	EXTERIOR ELEVATIONS
A13	EXTERIOR ELEVATIONS
A14	PAINT INFORMATION
A15	PAINT INFORMATION
A16	PAINT INFORMATION
A17	PAINT INFORMATION / WARRANTY

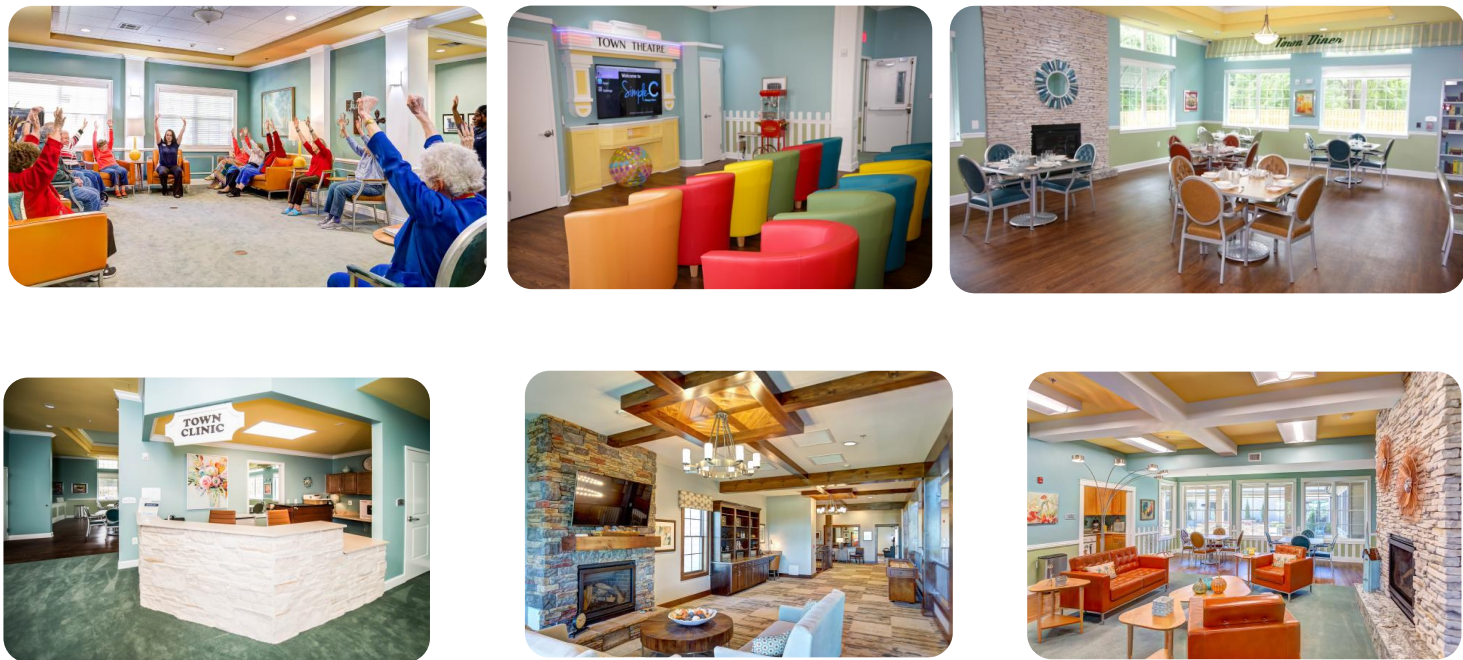


LEGACY SENIOR LIVING - INTRODUCTION

MISSION AND VALUES



SAMPLE INTERIOR



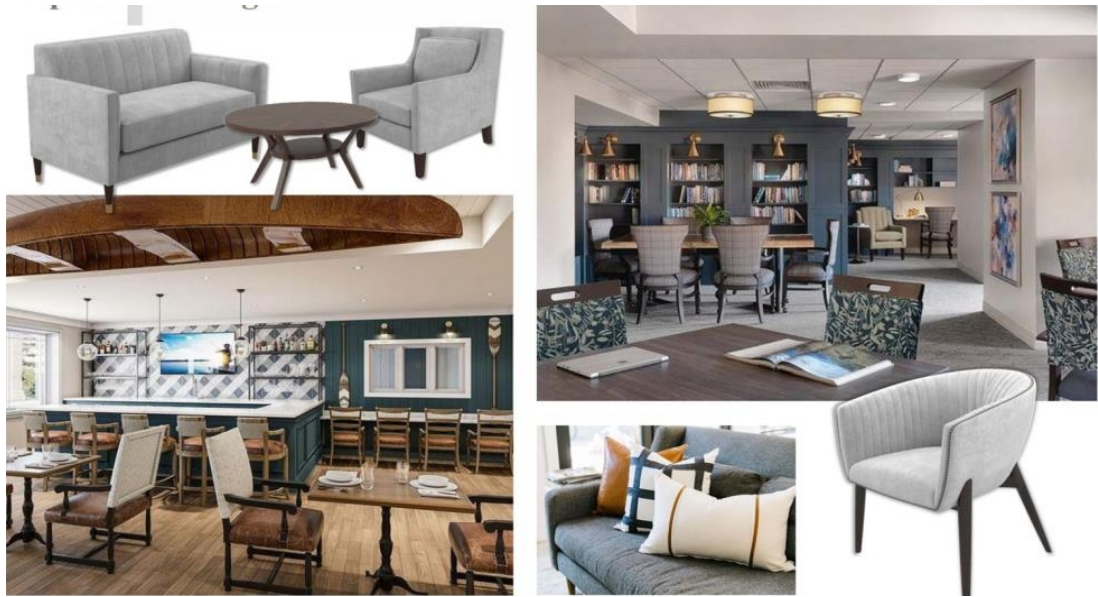
BEFORE



AFTER



UNIT FURNITURE



SITE AERIAL IMAGES



VIEW OF SITE LOOKING NORTH



VIEW OF SITE LOOKING EAST



VIEW OF SITE LOOKING SOUTH



VIEW OF SITE LOOKING WEST



EXISTING BUILDING

EXTERIOR IMAGES



EXTERIOR BUILDING

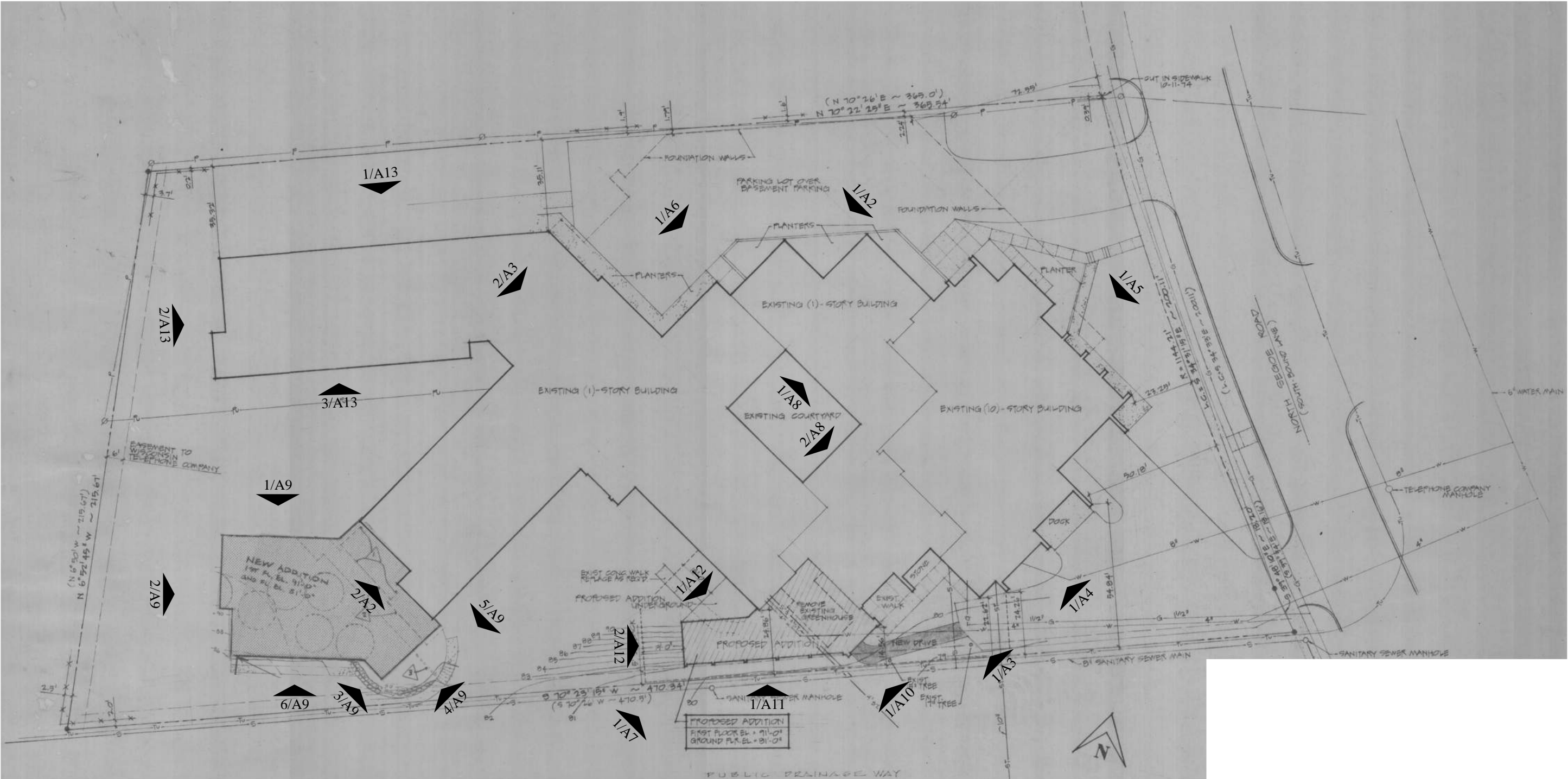
CURRENT VS. PROPOSED



Proposed Paint Color:
SW7554 Steamed Milk

EXISTING SITE PLAN

SCALE: 1" = 40'

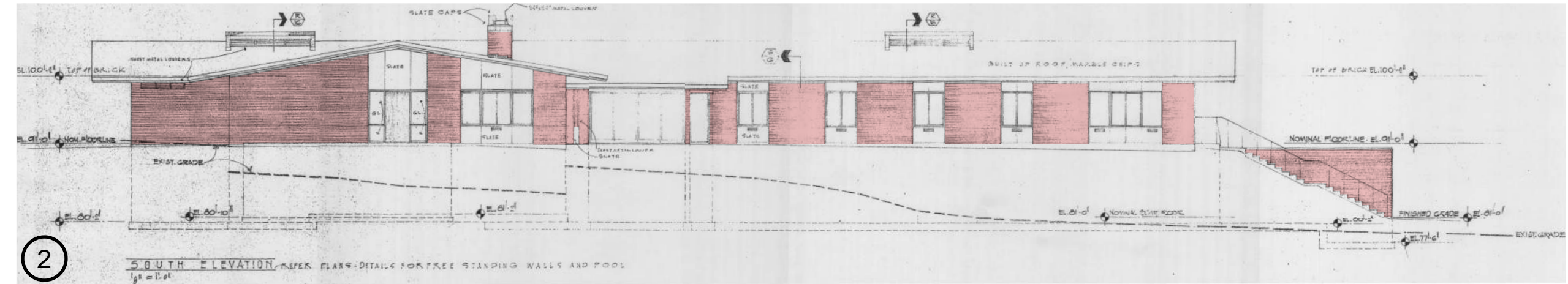
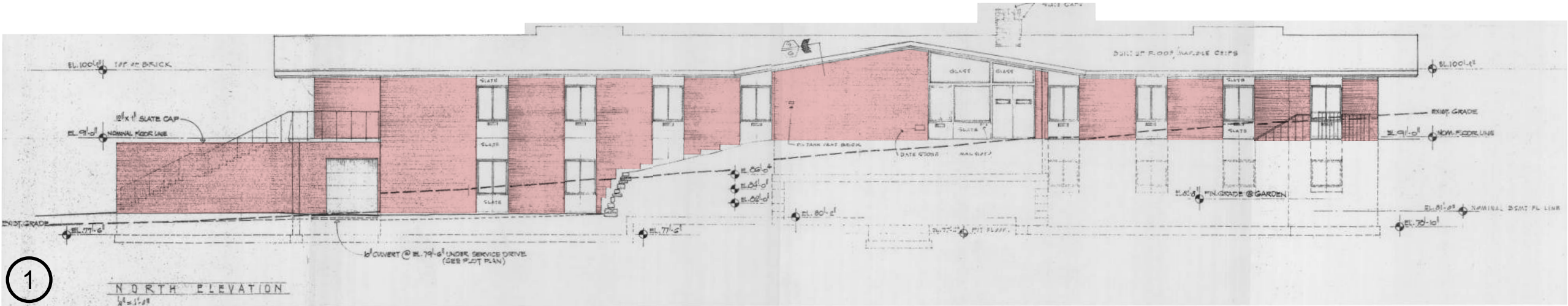


EXTERIOR ELEVATIONS

SCALE: 1/16" = 1'-0"

Exterior Material Legend / Key

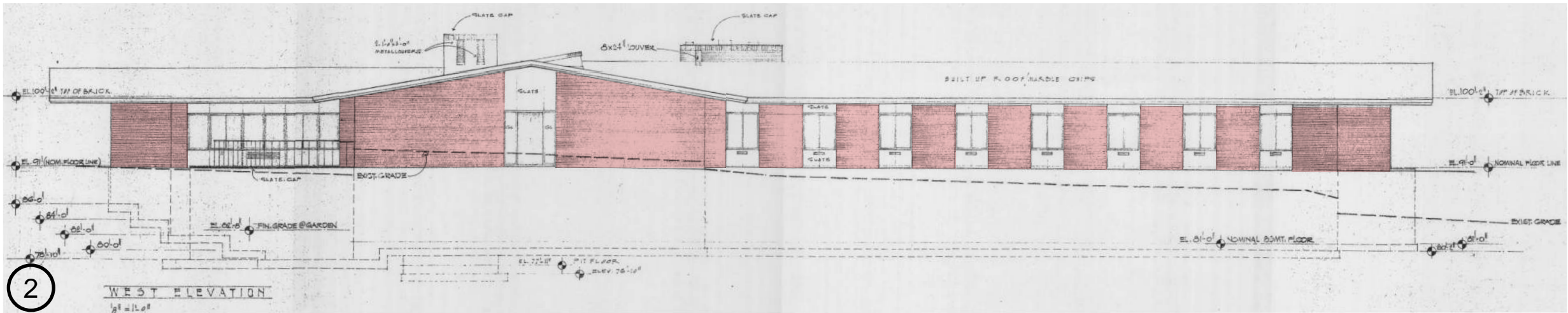
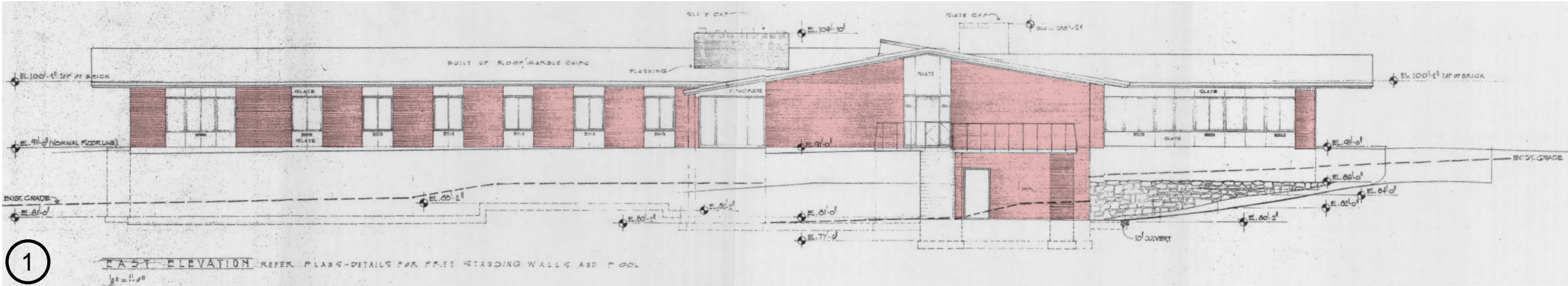
		<p>At existing masonry and stone panels provide repairs tuck pointing, brick replacement, etc., as needed.</p> <p>Lightly pressure wash elevations in preparation for single-coat of 25-year warranted Nawkaw Nawtone-KO potassium silicate color treatment at all areas indicated with graphic, color to be Sherwin Williams (SW) 7554 Steamed Milk.</p>
Graphic	SW 7554 Steamed Milk	



EXTERIOR ELEVATIONS

SCALE: 1/16" = 1'-0"

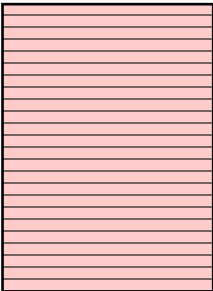
Exterior Material Legend / Key		
		<p>At existing masonry and stone panels provide repairs tuck pointing, brick replacement, etc., as needed.</p> <p>Lightly pressure wash elevations in preparation for single-coat of 25-year warranted Nawkaw Nawtone-KO potassium silicate color treatment at all areas indicated with graphic, color to be Sherwin Williams (SW) 7554 Steamed Milk.</p>
Graphic	SW 7554 Steamed Milk	



EXTERIOR ELEVATIONS

SCALE: 1/16" = 1'-0"

Exterior Material Legend / Key

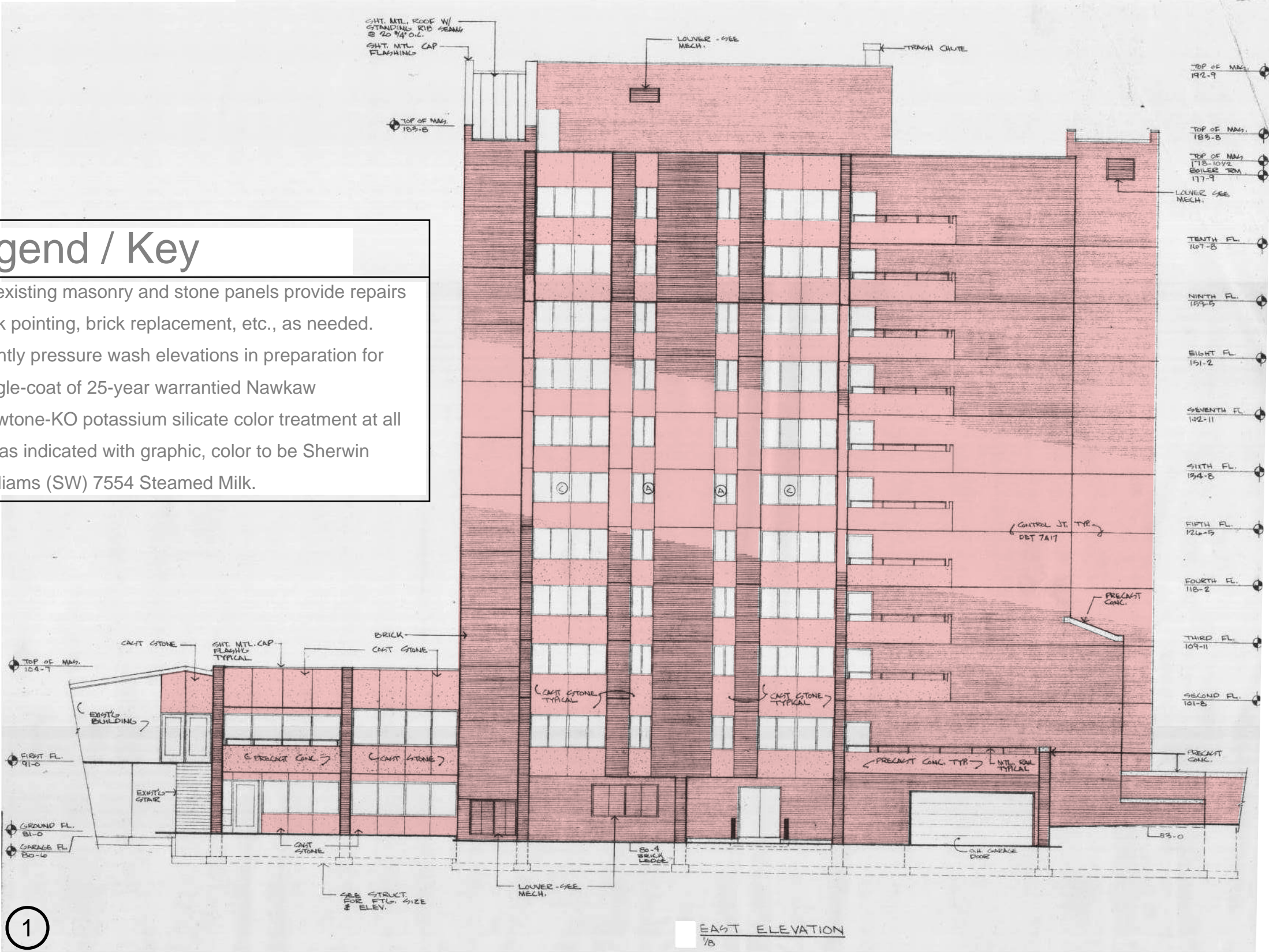


Graphic



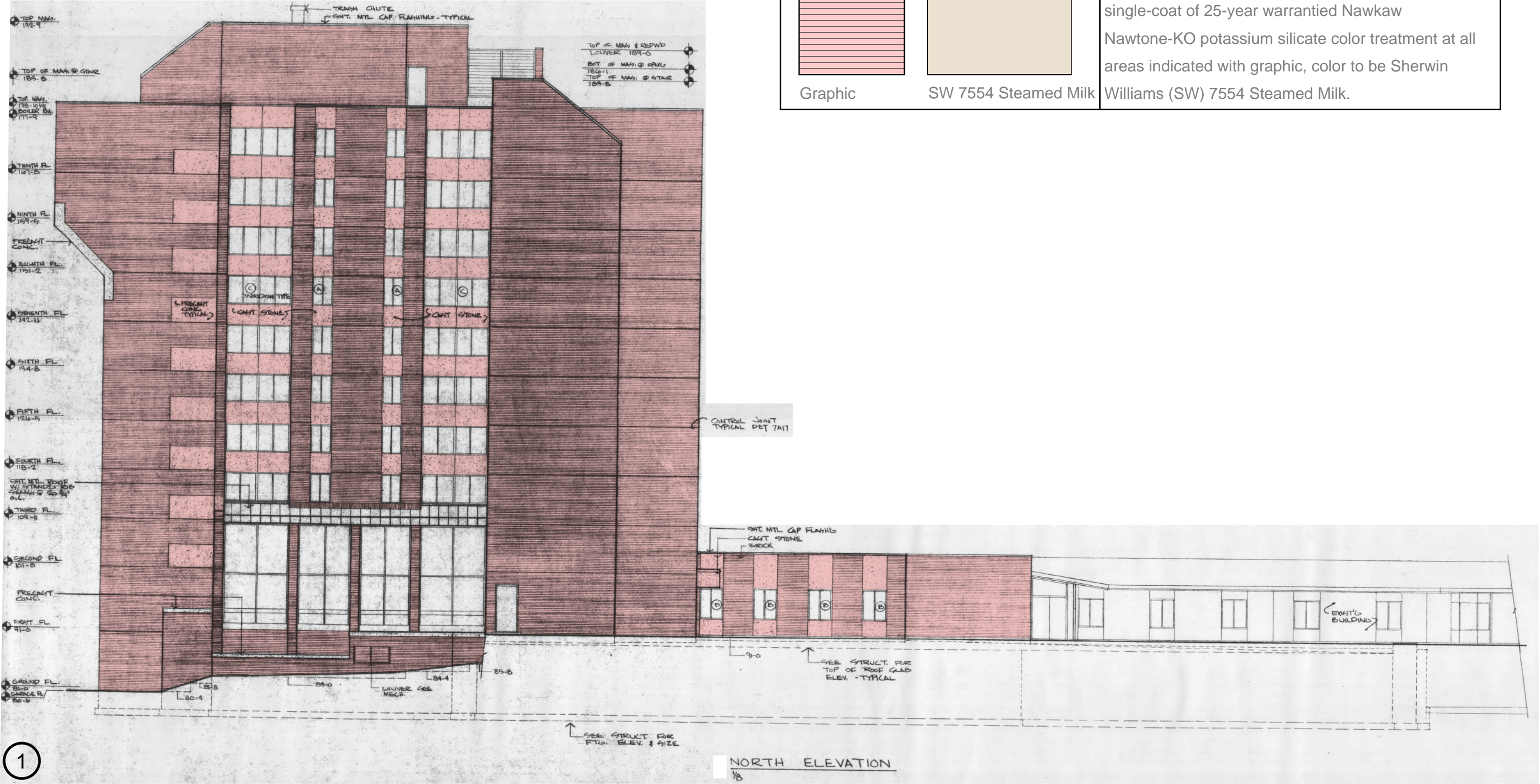
SW 7554 Steamed Milk

At existing masonry and stone panels provide repairs tuck pointing, brick replacement, etc., as needed. Lightly pressure wash elevations in preparation for single-coat of 25-year warranted Nawkaw Nawtone-KO potassium silicate color treatment at all areas indicated with graphic, color to be Sherwin Williams (SW) 7554 Steamed Milk.



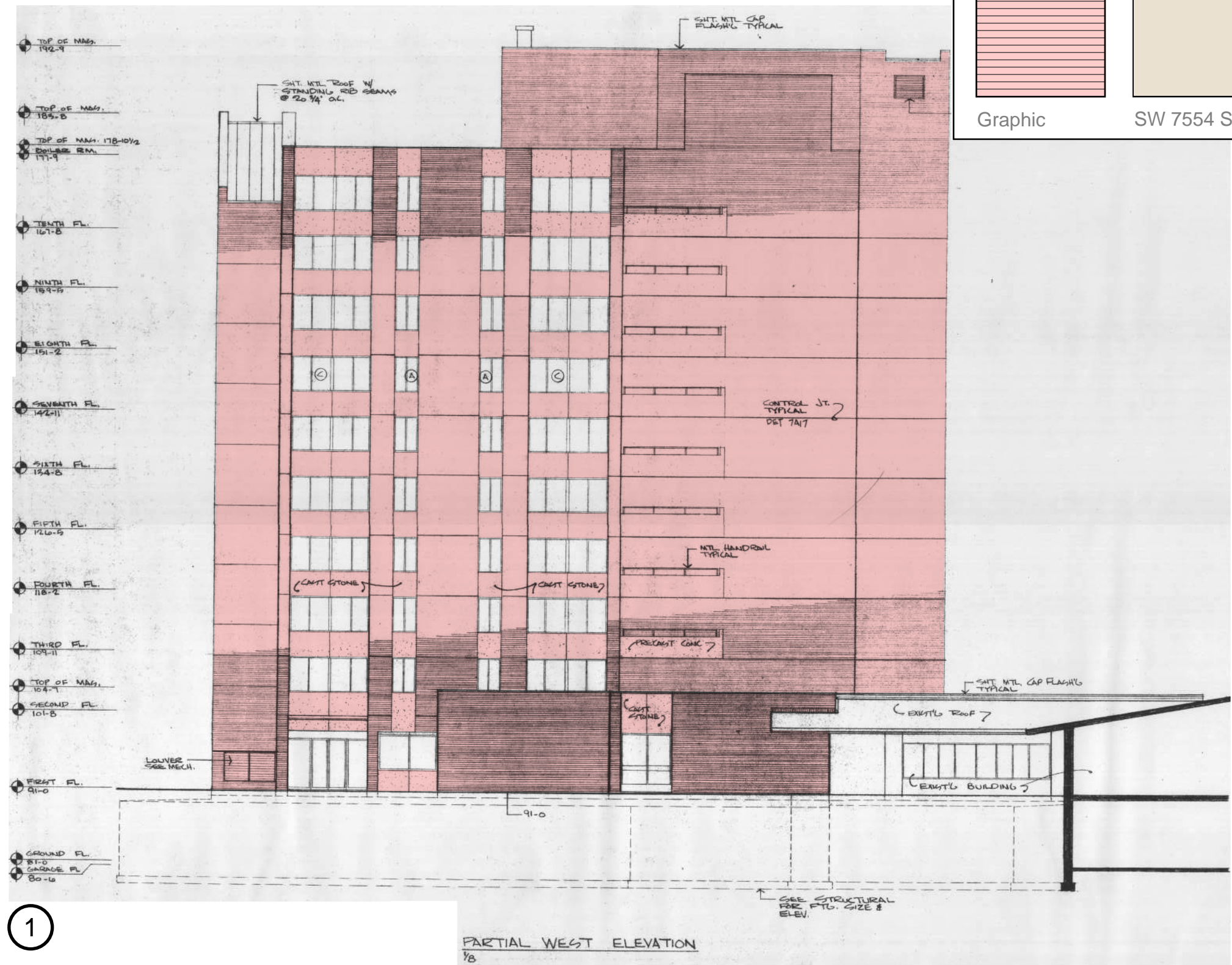
EXTERIOR ELEVATIONS

SCALE: 1/16" = 1'-0"



EXTERIOR ELEVATIONS

SCALE: 1/16" = 1'-0"



Exterior Material Legend / Key		
		At existing masonry and stone panels provide repairs tuck pointing, brick replacement, etc., as needed.
Graphic	SW 7554 Steamed Milk	Lightly pressure wash elevations in preparation for single-coat of 25-year warranted Nawkaw
		Nawtone-KO potassium silicate color treatment at all areas indicated with graphic, color to be Sherwin Williams (SW) 7554 Steamed Milk.

EXTERIOR ELEVATIONS

SCALE: 1/16" = 1'-0"



Exterior Material Legend / Key		
		At existing masonry and stone panels provide repairs tuck pointing, brick replacement, etc., as needed.
Graphic	SW 7554 Steamed Milk	Lightly pressure wash elevations in preparation for single-coat of 25-year warranted Nawkaw
		Nawtone-KO potassium silicate color treatment at all areas indicated with graphic, color to be Sherwin Williams (SW) 7554 Steamed Milk.

1

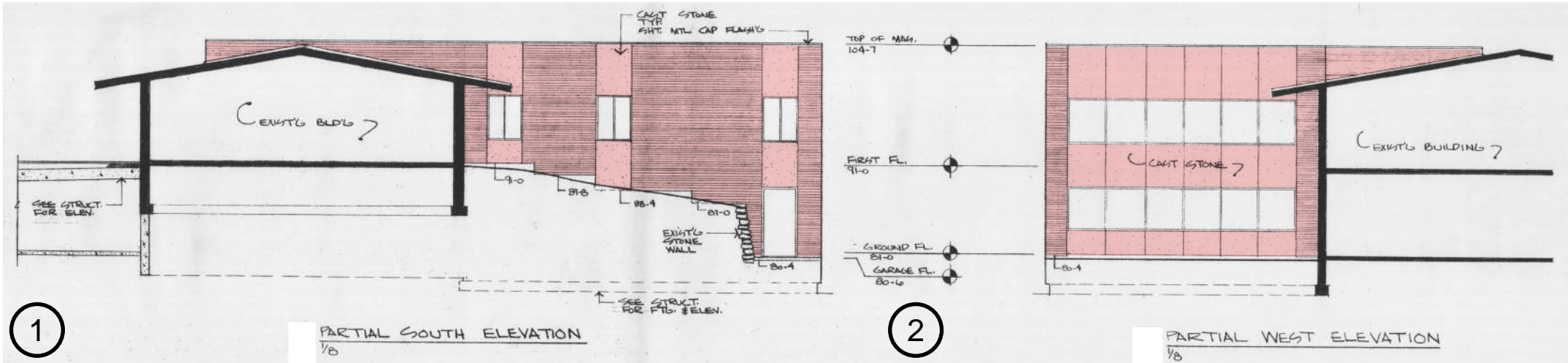
PARTIAL SOUTH ELEVATION
1/8



EXTERIOR ELEVATIONS

SCALE: 1/16" = 1'-0"

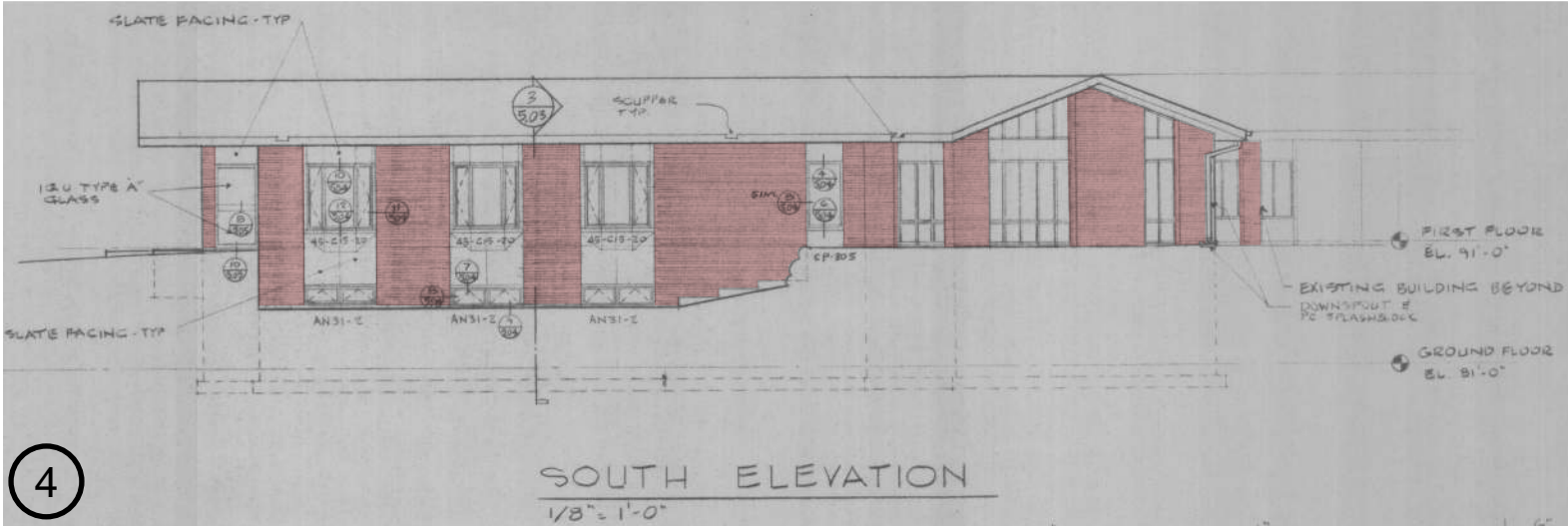
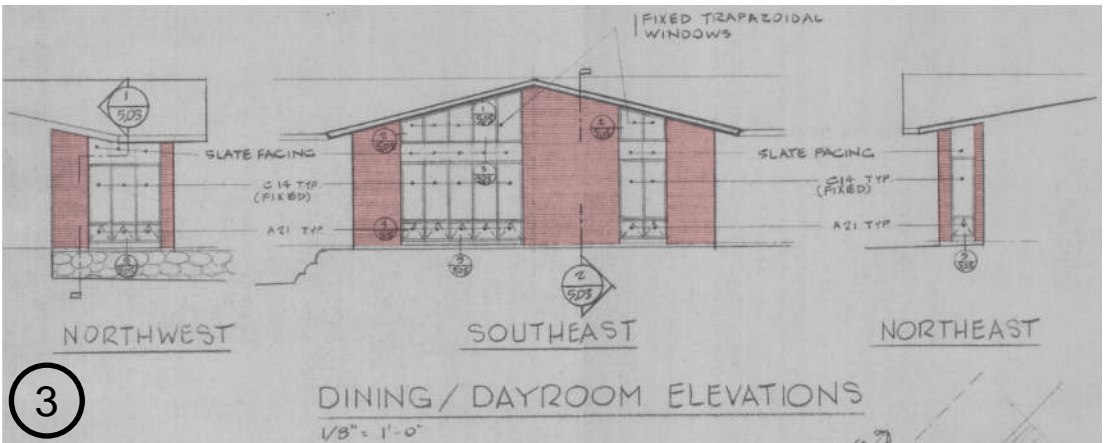
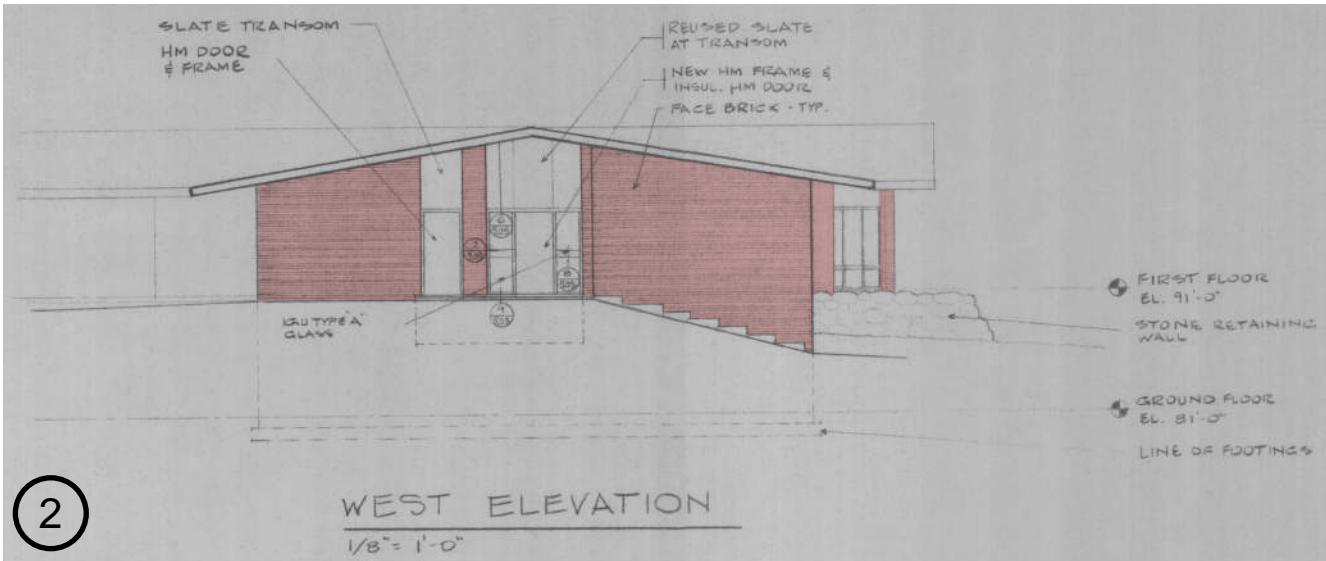
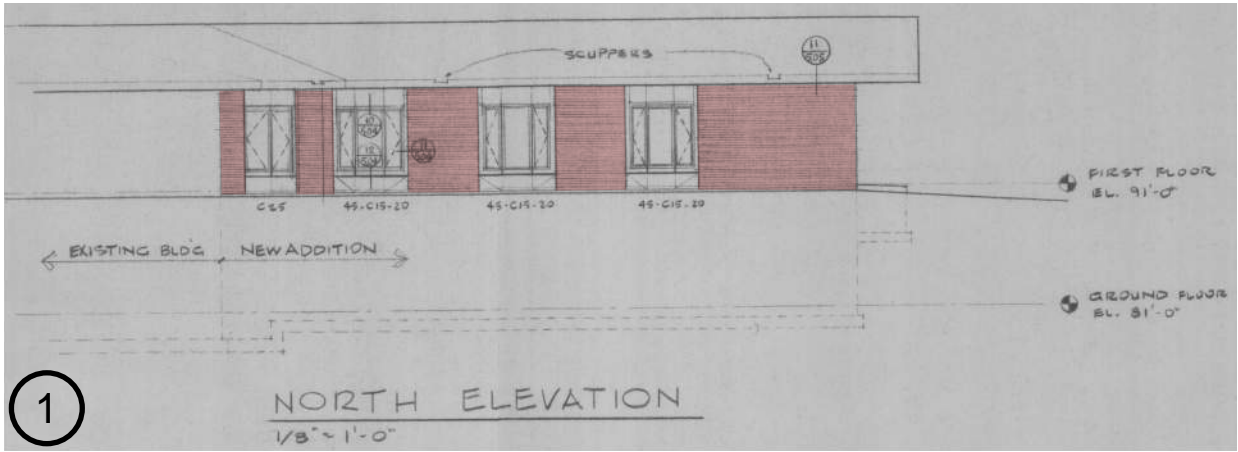
Exterior Material Legend / Key		
		<p>At existing masonry and stone panels provide repairs tuck pointing, brick replacement, etc., as needed.</p> <p>Lightly pressure wash elevations in preparation for single-coat of 25-year warranted Nawkaw Nawtone-KO potassium silicate color treatment at all areas indicated with graphic, color to be Sherwin Williams (SW) 7554 Steamed Milk.</p>
Graphic	SW 7554 Steamed Milk	



EXTERIOR ELEVATIONS

SCALE: 1/16" = 1'-0"

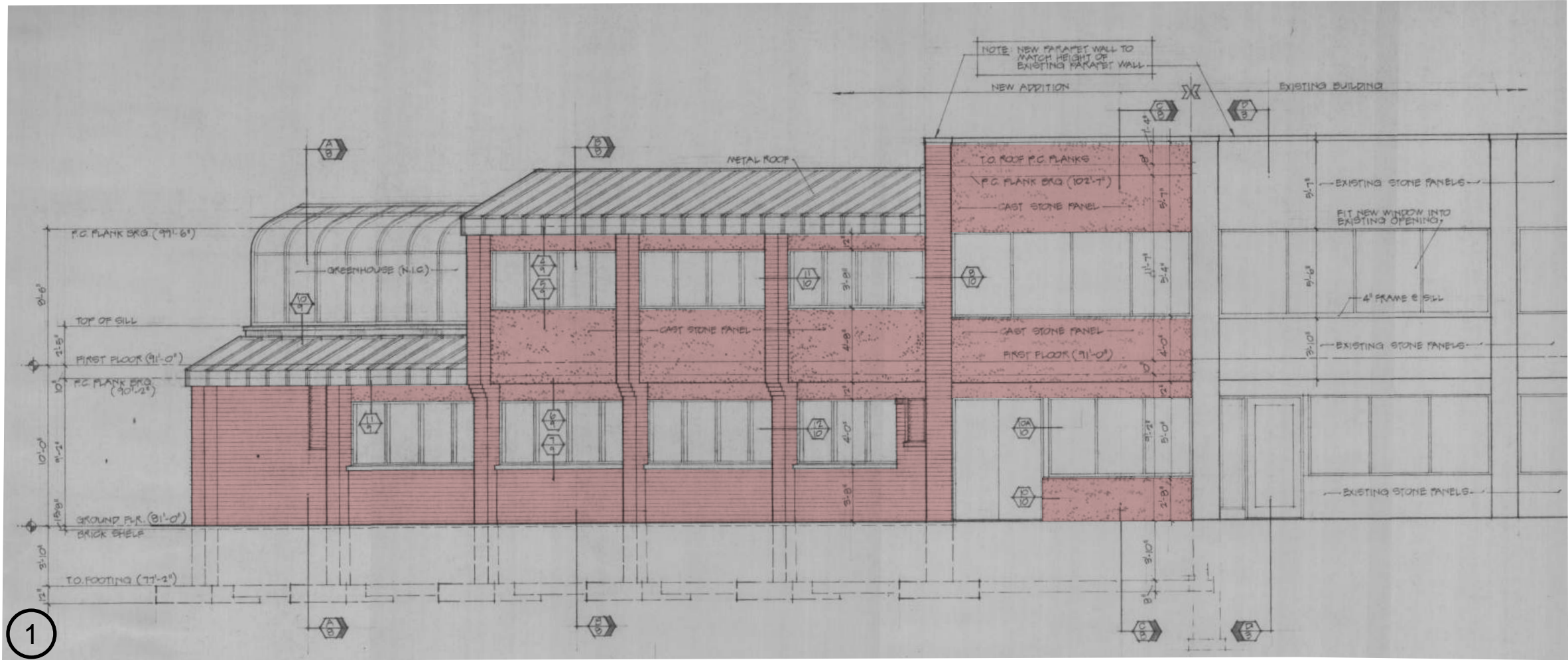
Exterior Material Legend / Key		
		<p>At existing masonry and stone panels provide repairs tuck pointing, brick replacement, etc., as needed.</p> <p>Lightly pressure wash elevations in preparation for single-coat of 25-year warranted Nawkaw Nawtone-KO potassium silicate color treatment at all areas indicated with graphic, color to be Sherwin Williams (SW) 7554 Steamed Milk.</p>
Graphic	SW 7554 Steamed Milk	



EXTERIOR ELEVATIONS

SCALE: 1/16" = 1'-0"

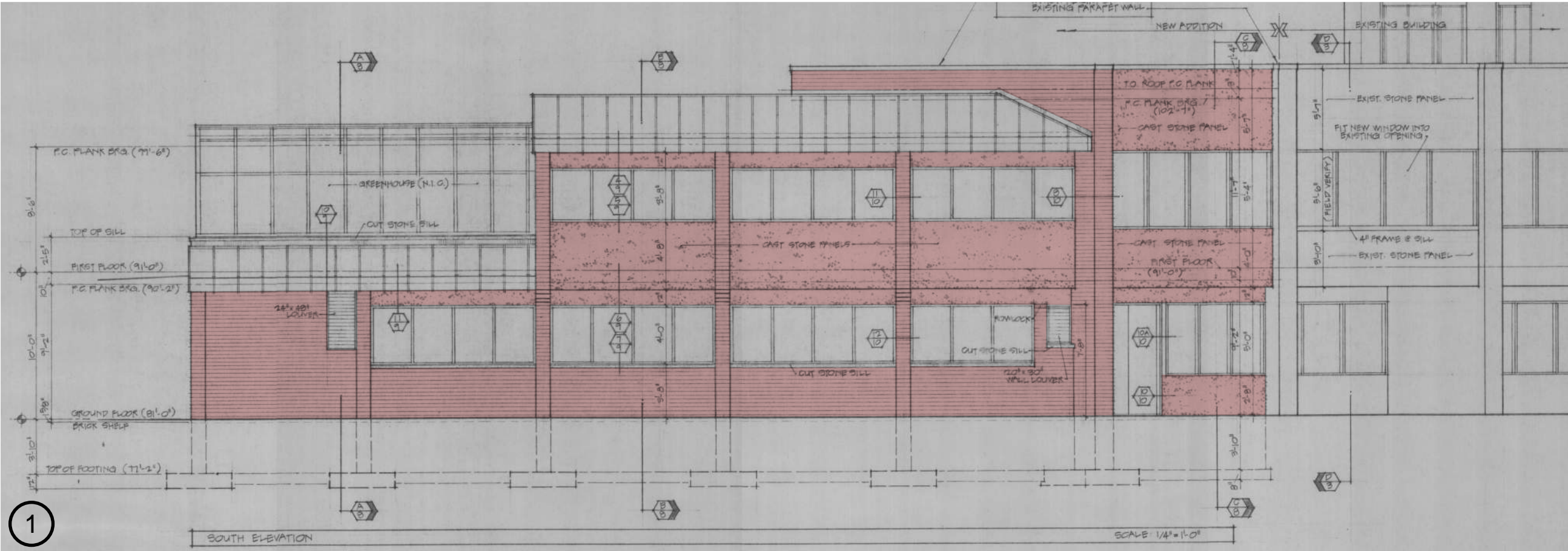
Exterior Material Legend / Key		
		At existing masonry and stone panels provide repairs tuck pointing, brick replacement, etc., as needed.
Graphic	SW 7554 Steamed Milk	Lightly pressure wash elevations in preparation for single-coat of 25-year warranted Nawkaw Nawtone-KO potassium silicate color treatment at all areas indicated with graphic, color to be Sherwin Williams (SW) 7554 Steamed Milk.



EXTERIOR ELEVATIONS

SCALE: 1/16" = 1'-0"

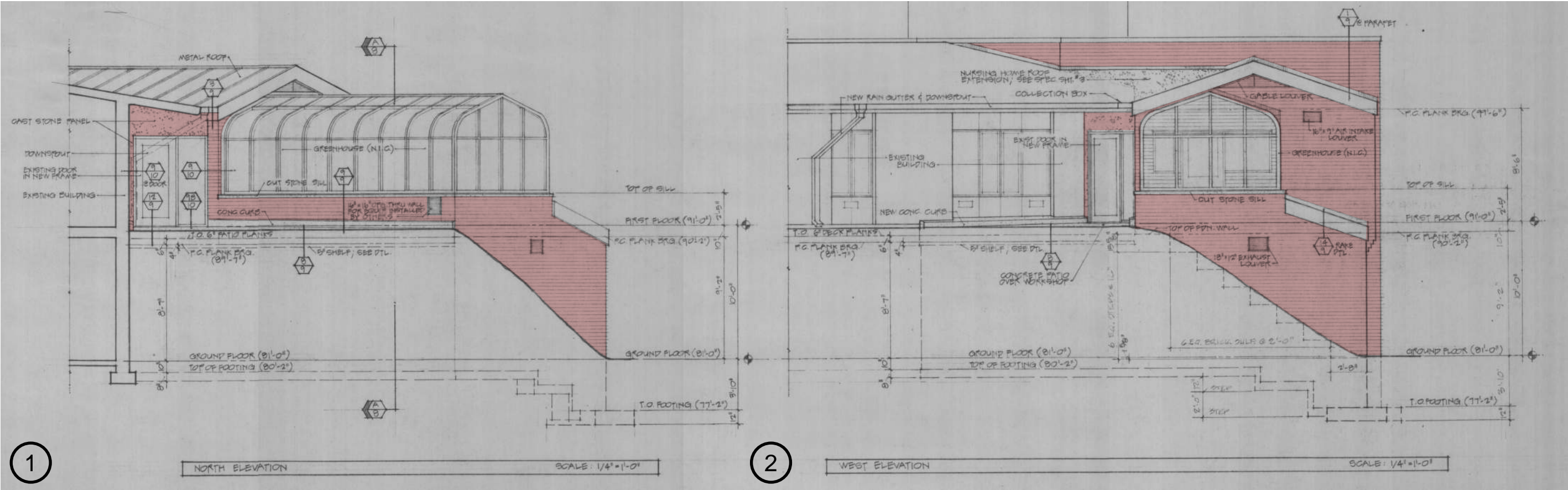
Exterior Material Legend / Key		
		<p>At existing masonry and stone panels provide repairs tuck pointing, brick replacement, etc., as needed.</p> <p>Lightly pressure wash elevations in preparation for single-coat of 25-year warranted Nawkaw Nawtone-KO potassium silicate color treatment at all areas indicated with graphic, color to be Sherwin Williams (SW) 7554 Steamed Milk.</p>
Graphic	SW 7554 Steamed Milk	



EXTERIOR ELEVATIONS

SCALE: 1/16" = 1'-0"

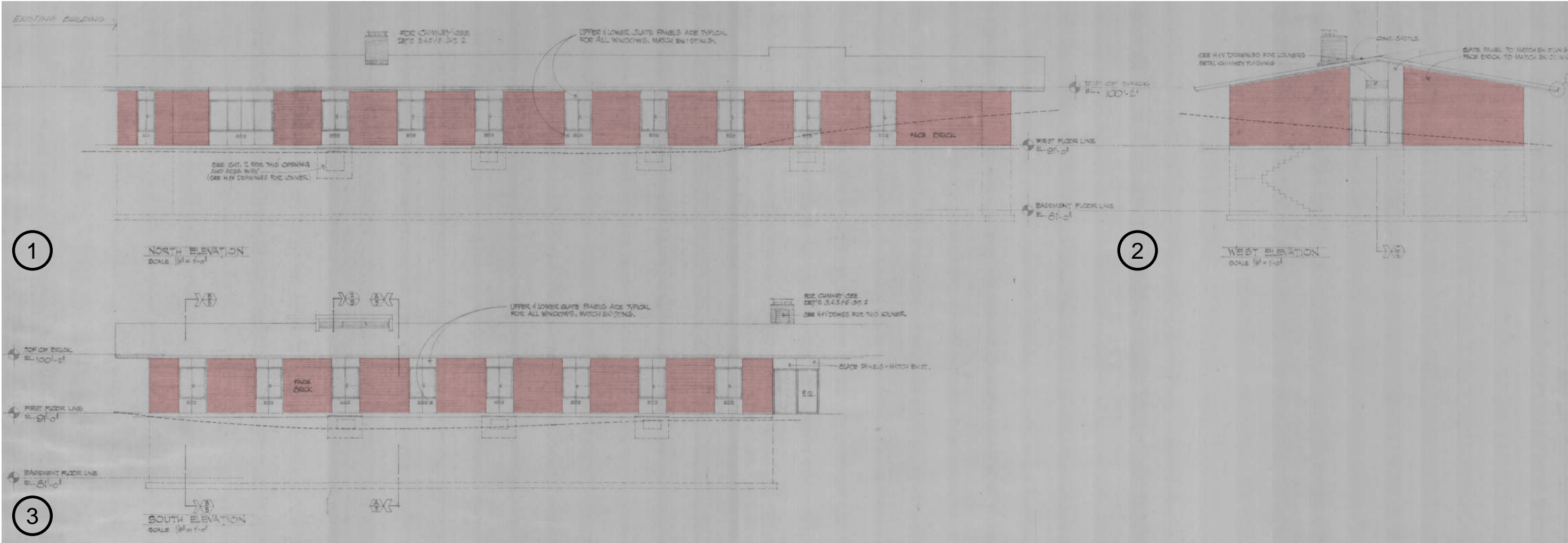
Exterior Material Legend / Key		
		<p>At existing masonry and stone panels provide repairs tuck pointing, brick replacement, etc., as needed.</p> <p>Lightly pressure wash elevations in preparation for single-coat of 25-year warranted Nawkaw Nawtone-KO potassium silicate color treatment at all areas indicated with graphic, color to be Sherwin Williams (SW) 7554 Steamed Milk.</p>
Graphic	SW 7554 Steamed Milk	



EXTERIOR ELEVATIONS

SCALE: 1/16" = 1'-0"

Exterior Material Legend / Key		
		<p>At existing masonry and stone panels provide repairs tuck pointing, brick replacement, etc., as needed.</p> <p>Lightly pressure wash elevations in preparation for single-coat of 25-year warranted Nawkaw Nawtone-KO potassium silicate color treatment at all areas indicated with graphic, color to be Sherwin Williams (SW) 7554 Steamed Milk.</p>
Graphic	SW 7554 Steamed Milk	



EXAMPLES OF STAINED & PAINTED BRICK



PAINT INFORMATION

Technical Data



NawTone®-K

NawTone-K is mineral stain that uses silicate as a binding agent to form a permanent chemical bond with substrates. The addition of lightfast, inorganic pigments enables a wide range of colors to be produced. **NawTone-K** exhibits the overall characteristics of being:

- UV resistant
- aspiratory
- weather resistant
- lightfast
- durable
- mold & mildew resistant
- penetrating
- odorless
- environmentally friendly

NawTone-K can be diluted with **NawThinz-C** for concrete surfaces or with **NawThinz-M** for masonry surfaces to create color-wash, semi-transparent, or opaque finishes. Our customized application techniques make **NawTone-K** a superior choice for new construction, renovation, restoration, and preservation.

Because **NawTone-K** chemically binds with concrete, it is ideal for use on precast and tilt-up projects. **NawTone-K** offers consistent color solutions for complete color changes, decorative applications, and solving color problems. This product is also very effective for blending away color variations that naturally occur in the manufacture of concrete. This includes correcting unsightly or mismatching patch repairs as well as skim coat finishes.

Environmental & Safety Concerns

NawTone-K is water-based, nonflammable, nonhazardous and has **Zero VOC** content. Use of this product may help your projects qualify for L.E.E.D credits.

Typical Specifications:

- **Viscosity:** (72° F) 60°-80° KU
- **pH:** ~11
- **Finish:** flat
- **Nonflammable**
- **VOC:** 0 g/L (ASTM D6886)
- **Abrasion Resistance:** excellent
- **Water Vapor Permeance:** 4.5×10^{-6} g/Pa s m²
- **Water Diffusion Resistance:** $s_d(H_2O) < 0.01$ m
- **UV Resistant–Accelerated Weathering**
(ASTM G154) : pass
- **Application Temperature:** 41°-110°F (5°-43°C)
- **Dry Time for Reapplication (if required):**
12 hrs concrete / 24 hrs masonry
- **Shelf Life:** 12 months in factory sealed container

Product Properties

- Penetrating
- Nonflammable
- Nontoxic
- Water-based
- Solvent-free
- Vapor-permeable
- Non-film-forming
- Zero VOC
- Water washup

Color Selection

Nawkaw stains allow you the freedom to choose the colors you want from any color specifiers or actual samples.

Create all levels of color, from completely opaque to just a hint of color.



Nawkaw Corporation | 380 Commerce Blvd - Athens GA 30606 USA | 706-355-3217 | email: info@nawkaw.com | www.Nawkaw.com

Technical Data *continued*

NawTone®-K

Surface Preparation

Prior to application ensure that substrate is clean, dry and free of dust. Remove loose and unstable material as a sound surface is required for external applications. Be sure to check for any presence of mold release residue from concrete forms. If present, remove according to manufacturer's guidelines.

Substrates that have been treated with acid/chemical wash must be neutralized prior to application.

Alkali or efflorescence should be treated with proper neutralizing compounds as recommended by manufacturers before application can begin.

Application

NawTone-K can be applied by brush, roller, sponge and spray equipment. The product should be thoroughly mixed by stirring before use. The choice of application technique depends on the desired color and finish one wishes to achieve.

For translucent finishes, NawTone-K will be customized depending on the level of translucency required for the project. This may involve varying the number of applications required. Opaque finishes may require 2 or 3 applications.

When NawTone-K has been diluted with NawThinz, be sure to keep it well stirred. ONLY DILUTE WITH NAWTHINZ.

It is important to maintain a wet edge at all times, and work to a natural break line.

Limitations

Not suitable for application on synthetic surfaces such as silicone, urethane, epoxy or plastic. This coating cures to a hard finish and is not recommended for use on caulking joints.

Coverage

Approximately 200-400 sq ft/gal (5-10 m²/l). Actual area covered depends on the porosity of the substrate and the application method(s) used.

Cleaning of Application Equipment

Cleanup of equipment with water should be completed before the products have been allowed to dry. Spills or overspray should be cleaned with water and not allowed to dry.

The User of the product assumes all liability for product's use except in situations involving a manufacture's defect. This technical information is offered as advice based on knowledge and practical experience and does not constitute a warranty. Before application, the User shall determine the suitability of the product for its intended use. User should also ensure that the product is thoroughly mixed prior to application as the product may have settled during shipment or storage. Furthermore, it is recommended that the User test the product on a sample area before use. Nawkaw retains the right to make modifications as part of the product's development or improvement of their application; it is the User's duty to ensure they are aware of any such changes. This edition supersedes all earlier editions.

Safety

- Protect eyes and skin from contact with NawTone-K.
- Do not swallow.
- Keep away from children.



NOTE:
See manufacturer's SDS sheet:
www.Nawkaw.com/downloads

Nawkaw Corporation | 380 Commerce Blvd - Athens GA 30606 USA | 706-355-3217 | email: info@nawkaw.com | www.Nawkaw.com



PAINT INFORMATION

NawTone-K

Safety Data Sheet

According to Federal Register / Vol. 77, No. 58 / Monday, March 26, 2012 / Rules and Regulations According to The Hazardous Products Regulation (February 11, 2015).
Revision Date: 04/11/2018 Date of Issue: 04/11/2018 Version: 1.2

SECTION 1: IDENTIFICATION

1.1. Product Identifier

Product Form: Mixture

Product Name: NawTone-K

1.2. Intended Use of the Product

Decorative coating for concrete and masonry surfaces

1.3. Name, Address, and Telephone of the Responsible Party

Company

USA: Nawkaw Corporation CANADA: Nawkaw Corporation
380 Commerce Blvd 2283 Argentia Road #23
Athens, GA 30606 USA Mississauga, ON, Canada L5N 5Z2
706.355.3217 905.542.7893

www.nawkaw.com

1.4. Emergency Telephone Number

Emergency Number : CHEMTREC +1 703-741-5970 / 1-800-424-9300

SECTION 2: HAZARDS IDENTIFICATION

2.1. Classification of the Substance or Mixture

GHS-US/CA Classification

Not classified

2.2. Label Elements

GHS-US/CA Labeling

No labeling applicable

2.3. Other Hazards

Observe the general safety precautions when handling chemicals.

HMIS: Health: 1 Flammability: 0 Reactivity: 0

NFPA: Health: 1 Flammability: 0 Reactivity: 0

2.4. Unknown Acute Toxicity (GHS-US/CA)

No data available

SECTION 3: COMPOSITION/INFORMATION ON INGREDIENTS

3.1. Substance

Not applicable

3.2. Mixture

Solution of potassium polysilicate, silica sol, mica, fillers, additives.

SECTION 4: FIRST AID MEASURES

4.1. Description of First-aid Measures

General: Never give anything by mouth to an unconscious person. If you feel unwell, seek medical advice (show the label where possible).

Inhalation: When symptoms occur: go into open air and ventilate suspected area. Obtain medical attention if breathing difficulty persists.

Skin Contact: Remove contaminated clothing. Rinse affected area with water for at least 5 minutes, wash with soap or mild detergent, do not use solvents and thinners. Obtain medical attention if irritation develops or persists.

Eye Contact: Rinse cautiously with water for at least 15 minutes. Remove contact lenses, if present and easy to do. Continue rinsing. Obtain medical attention if redness, pain, or irritation occurs.

Ingestion: Rinse mouth. Give water to dilute stomach contents. Do NOT induce vomiting. Obtain medical attention.

4.2. Most Important Symptoms and Effects Both Acute and Delayed

General: Not expected to present a significant hazard under anticipated conditions of normal use. OSHA Hazard Communication: This material is not considered hazardous by the OSHA Hazard Communication Standard 29CFR 1910.1200.

04/11/2018

EN (English US)

1/4

NawTone-K

Safety Data Sheet

According to Federal Register / Vol. 77, No. 58 / Monday, March 26, 2012 / Rules and Regulations According to The Hazardous Products Regulation (February 11, 2015).

4.3. Indication of Any Immediate Medical Attention and Special Treatment Needed

If exposed or concerned, get medical advice and attention. If medical advice is needed, have product container or label at hand.

SECTION 5: FIRE-FIGHTING MEASURES

5.1. Extinguishing Media

Suitable Extinguishing Media: Use extinguishing media appropriate for surrounding fire. Product itself does not burn.

5.2. Special Hazards Arising From the Substance or Mixture

In case of fire or explosion do not breathe fumes. Decomposition products that may be released in case of fire include silicon dioxide and carbon oxides and can cause health hazard.

5.3. Advice for Firefighters

Precautionary Measures Fire: Exercise caution when fighting any chemical fire.

Firefighting Instructions: Use water spray or fog for cooling exposed containers.

Protection During Firefighting: Do not enter fire area without proper protective equipment, including respiratory protection. In case of fire or explosion do not breathe fumes.

Additional information: Fire residues and contaminated firefighting water must be disposed of in accordance with the local regulations.

5.4. Reference to Other Sections

Refer to Section 9 for flammability properties.

SECTION 6: ACCIDENTAL RELEASE MEASURES

6.1. Personal Precautions, Protective Equipment and Emergency Procedures

General Measures: Avoid prolonged contact with eyes, skin and clothing. Avoid breathing (vapor, mist, spray). Ensure adequate ventilation. Risk of slipping due to leakage/spillage of product.

6.2. Environmental Precautions

Prevent entry to sewers and public waters.

6.3. Methods and Materials for Containment and Cleaning Up

For Containment: Contain any spills with dikes or absorbents to prevent migration and entry into sewers or streams.

Methods for Cleaning Up: Clean up spills immediately and dispose of waste safely. Transfer spilled material to a suitable container for disposal. Clean contaminated surface thoroughly with water.

6.4. Reference to Other Sections

Refer to Section 8 for exposure controls and personal protection and Section 13 for disposal considerations.

SECTION 7: HANDLING AND STORAGE

7.1. Precautions for Safe Handling

Precautions for Safe Handling: Wash hands and other exposed areas with mild soap and water before eating, drinking or smoking and when leaving work. Avoid prolonged contact with eyes, skin and clothing. Avoid breathing vapors, mist, spray. No special measure necessary.

Hygiene Measures: Handle in accordance with good industrial hygiene and safety procedures.

7.2. Conditions for Safe Storage, Including Any Incompatibilities

Technical Measures: Comply with applicable regulations.

Storage Conditions: Keep container closed when not in use. Store in a dry, cool and well-ventilated place. Keep/Store away from direct sunlight, extremely high or low temperatures and incompatible materials.

Incompatible Materials: Strong acids

SECTION 8: EXPOSURE CONTROLS/PERSONAL PROTECTION

8.1. Control Parameters

Product does not contain substances other than listed here, that have established Exposure limits from the manufacturer, supplier, importer, or the appropriate advisory agency including: ACGIH (TLV), AIHA (WEEL), NIOSH (REL), OSHA (PEL), Canadian provincial governments, or the Mexican government.

Substance	CAS No.	mg/m³	Category	Origin
Silica, crystalline (respirable dust)	14808-60-7	0.05	TWA (8h)	REL
Silica, crystalline- alpha-quartz (respirable fraction)	14808-60-7	0.025	TWA (8h)	TLV
Silica, crystalline quartz (total dust)	14808-60-7	(Z-3)	TWA (8h)	PEL

04/11/2018

EN (English US)

2/4



PAINT INFORMATION

NawTone-K

Safety Data Sheet
According to Federal Register / Vol. 77, No. 58 / Monday, March 26, 2012 / Rules and Regulations According to The Hazardous Products Regulation (February 11, 2015).

8.2. Exposure Controls

Appropriate Engineering Controls: Emergency eye wash fountains and safety showers should be available in the immediate vicinity of any potential exposure. Ensure adequate ventilation, especially in confined areas. Ensure all national/local regulations are observed.

Personal Protective Equipment: Gloves. Protective clothing. Protective goggles.

Materials for Protective Clothing: Chemically resistant materials and fabrics.

Hand Protection: Wear protective gloves.

Eye Protection: Chemical safety goggles.

Skin and Body Protection: Wear suitable protective clothing.

Respiratory Protection: Not required. In case of aerosol formation use mask with filter type N.

Other Information: When using, do not eat, drink or smoke

SECTION 9: PHYSICAL AND CHEMICAL PROPERTIES

9.1. Information on Basic Physical and Chemical Properties

Physical State	: Liquid
Odor	: Slight
Odor threshold	: Not available
pH	: ~ 11
Evaporation rate	: Not available
Freezing Point	: ~ 0 °C (32 °F)
Boiling Point	: ~ 100 °C (212 °F)
Flash point	: Not available
Decomposition Temperature	: Not available
Auto-ignition Temperature	: Not self-igniting
Flammability (solid, gas)	: Not flammable
Flammable limit	: Not flammable
Vapor Pressure	: ~ 23 hPa at 20°C (68°F)
Relative vapor density	: Not available
Relative Density	: 1 .3 g/cm³
Solubility	: Water: Miscible
Partition coefficient	: Not available
Viscosity	: 400 – 600 mPas

SECTION 10: STABILITY AND REACTIVITY

- 10.1. **Reactivity:** Hazardous reactions will not occur under normal conditions.
- 10.2. **Chemical Stability:** Stable under recommended handling and storage conditions (see section 7).
- 10.3. **Possibility of Hazardous Reactions:** Hazardous reactions will not occur under normal conditions.
- 10.4. **Conditions to Avoid:** Direct sunlight, extremely high or low temperatures, and incompatible materials.
- 10.5. **Incompatible Materials:** Acids
- 10.6. **Hazardous Decomposition Products:** None expected under normal conditions of use.

SECTION 11: TOXICOLOGICAL INFORMATION

11.1. Information on Toxicological Effects - Product

Acute Toxicity: Not classified. No toxicological data available.

Skin Corrosion/Irritation: Not classified. May cause temporary mechanical irritation.

Eye Damage/Irritation: Not classified. May cause temporary mechanical irritation.

Respiratory or Skin Sensitization: Not classified

Germ Cell Mutagenicity: Not classified

Carcinogenicity: Not classified

Specific Target Organ Toxicity (Repeated Exposure): Not classified

Reproductive Toxicity: Not classified

Specific Target Organ Toxicity (Single Exposure): Not classified

NawTone-K

Safety Data Sheet
According to Federal Register / Vol. 77, No. 58 / Monday, March 26, 2012 / Rules and Regulations According to The Hazardous Products Regulation (February 11, 2015).

Aspiration Hazard: Not classified

SECTION 12: ECOLOGICAL INFORMATION

12.1. Toxicity

Ecology - General: Not classified.

12.2. Persistence and Degradability

NawTone-K	
Persistence and Degradability	Not established.

12.3. Bio accumulative Potential

NawTone-K	
Bioaccumulative Potential	Not established.

12.4. Mobility in Soil Not available

12.5. Other Adverse Effects

Other Information: Avoid release to the environment. Do not flush into sanitary sewer system.

SECTION 13: DISPOSAL CONSIDERATIONS

13.1. Waste treatment methods

Waste Disposal Recommendations: Dispose of contents/container in accordance with local, regional, provincial, territorial, national, and international regulations. Cleaning agent: water.

Ecology - Waste Materials: Avoid release to the environment.

SECTION 14: TRANSPORT INFORMATION

The shipping description(s) stated herein were prepared in accordance with certain assumptions at the time the SDS was authored, and can vary based on a number of variables that may or may not have been known at the time the SDS was issued.

- 14.1. **In Accordance with DOT** Not regulated for transport
- 14.2. **In Accordance with IMDG** Not regulated for transport
- 14.3. **In Accordance with IATA** Not regulated for transport
- 14.4. **In Accordance with TDG** Not regulated for transport

SECTION 15: REGULATORY INFORMATION

15.1. US Federal Regulations

All of the components are listed on the United States TSCA (Toxic Substances Control Act) inventory.

15.2. US State Regulations

U.S. - California - Proposition 65 - Safe Drinking Water and Toxic Enforcement Act of 1986: This product contains no chemicals known to the State of California to cause cancer or birth defects.

15.3. Canadian Regulations

All of the components are listed on the Canadian DSL (Domestic Substances List).

SECTION 16: OTHER INFORMATION, INCLUDING DATE OF PREPARATION OR LAST REVISION

Revision Date	: 04/11/2018
Other Information	This document has been prepared in accordance with the SDS requirements of the OSHA Hazard Communication Standard 29 CFR 1910.1200 and Canada’s Hazardous Products Regulations (HPR).

Hazardous Materials Information Label (HMIS)

Health	: 1
Flammability	: 0
Physical Hazard	: 0

National Fire Protection Association Hazard Ratings

Health	: 1
Flammability	: 0
Reactivity	: 0

This information is based on our current knowledge and is intended to describe the product for the purposes of health, safety and environmental requirements only. It should not therefore be construed as guaranteeing any specific property of the product.

PAINT INFORMATION



LIMITED PRODUCT WARRANTY

Date: _____ Warranty #: _____ Effective Date: _____

Project Name: _____ Owner: _____

Product Name: _____ General Contractor: _____

Project Address: _____

Nawkaw warrants to the Building Owner, that for a period of twenty-five (25) years from the Effective Date the Nawkaw stain product indicated above will conform to Nawkaw's published specifications in effect as of the date of purchase, and, when applied according to printed instructions, will be free from defects in materials which result in fading, flaking or peeling. For Nawkaw stain products that include water repellents, the warranty for the water repellency shall be for a period of five (5) years from the Effective Date.

General Requirements
In order to obtain this warranty, the Building Owner is responsible to ensure: (i) that the Nawkaw product is applied in strict compliance with Nawkaw's published application procedures and in accordance with any project-specific recommendations from Nawkaw; and (ii) that the Nawkaw product is used with compatible materials and substrates.

Limitations
This warranty specifically excludes failure of the product due to:

- a. natural causes including, but not limited to, lightning, earthquake, hurricane, flooding, tornado, and fire;
- b. faulty or improper application;
- c. poor condition of the application surface, including but not limited to peeling and rotting;
- d. disintegration, deterioration or failure of the application surface;
- e. mechanical damage including, but not limited to, that which is caused by surface abrasion, individuals, tools, vandalism, de-icing products or other outside agents; and
- f. defects in the design or construction of the building where the product was applied.

This warranty will be null and void if Nawkaw has not received payment in full for the product used, or if any other coating is applied on top of Nawkaw's stain product, or if it is found that the application surface had previously been treated with a water repellant and this information was not disclosed to Nawkaw prior to the application of Nawkaw's stain product.

Remedies
In the event of a claim under this warranty, Building Owner must notify Nawkaw within thirty (30) days of the date when Building Owner discovered or ought to have discovered the defect and provide Nawkaw with the opportunity to inspect. If Nawkaw reasonably verifies that its product is defective, Nawkaw shall, in its sole discretion, either replace the product or credit or refund the price of the product at the pro rata contract rate.

EXCEPT FOR THE WARRANTY SET FORTH ABOVE, NAWKAW MAKES NO WARRANTY WHATSOEVER WITH RESPECT TO ITS PRODUCTS, INCLUDING ANY (A) WARRANTY OF MERCHANTABILITY OR (B) WARRANTY OF FITNESS FOR A PARTICULAR PURPOSE, WHETHER EXPRESS OR IMPLIED BY LAW, COURSE OF DEALING, COURSE OF PERFORMANCE, USAGE OF TRADE OR OTHERWISE.

THE REMEDIES SET FORTH IN THIS LIMITED WARRANTY SHALL BE BUILDING OWNER'S SOLE AND EXCLUSIVE REMEDY AND NAWKAW CORPORATION'S ENTIRE LIABILITY FOR ANY BREACH OF THIS LIMITED WARRANTY.

This warranty agreement is governed by and construed in accordance with Georgia law.

The product is sold upon and subject to Nawkaw's standard Terms and Conditions of Sale (the "Standard Terms"). To the extent there may be a conflict between the terms of any warranty in the Standard Terms and the provisions of this warranty, the provisions of this warranty shall prevail. This warranty is not in effect unless signed by an authorized representative of the Nawkaw Corporation, and may be modified only in a writing signed by the Nawkaw Corporation.

NAWKAW CORPORATION

By: _____
Name: Kasia Purzycka
President

NAWKAW CORPORATION
380 COMMERCE BLVD
ATHENS, GA 30606 USA

PHONE: 1-866-462-9529
E-MAIL: INFO@NAWKAW.COM

WWW.NAWKAW.COM

