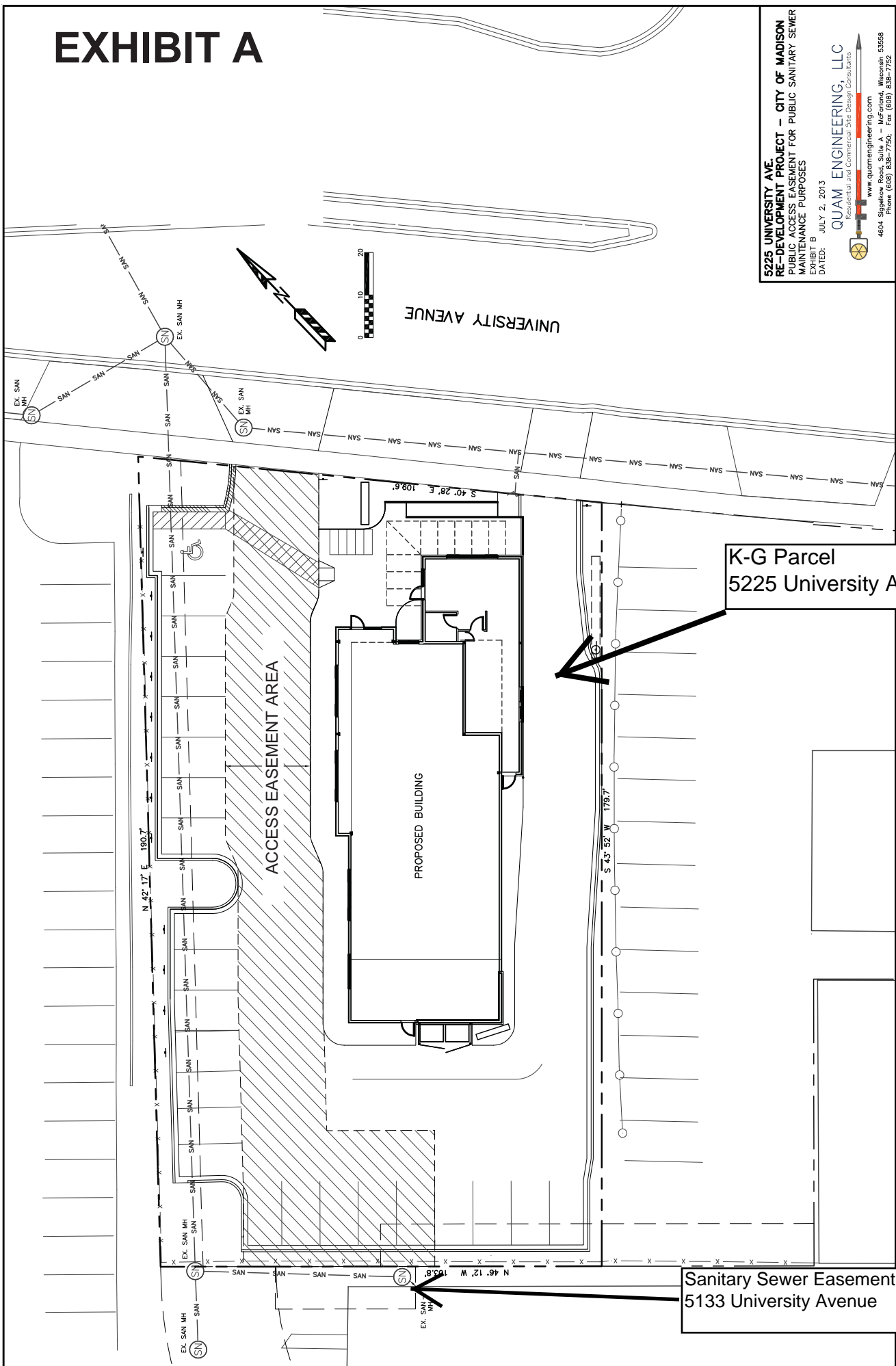


EXHIBIT A



5225 UNIVERSITY AVE.
RE-DEVELOPMENT PROJECT - CITY OF MADISON
PUBLIC ACCESS EASEMENT FOR PUBLIC SANITARY SEWER
MAINTENANCE PURPOSES
EXHIBIT B
DATED: JULY 2, 2013

QUAM ENGINEERING, LLC
Residential and Commercial Site Design Consultants
www.quamengineering.com
4604 Sigelkow Road, Suite A - McFarland, Wisconsin 53558
Phone (608) 838-7750; Fax (608) 838-7752

K-G Parcel
5225 University Avenue

Sanitary Sewer Easement
5133 University Avenue