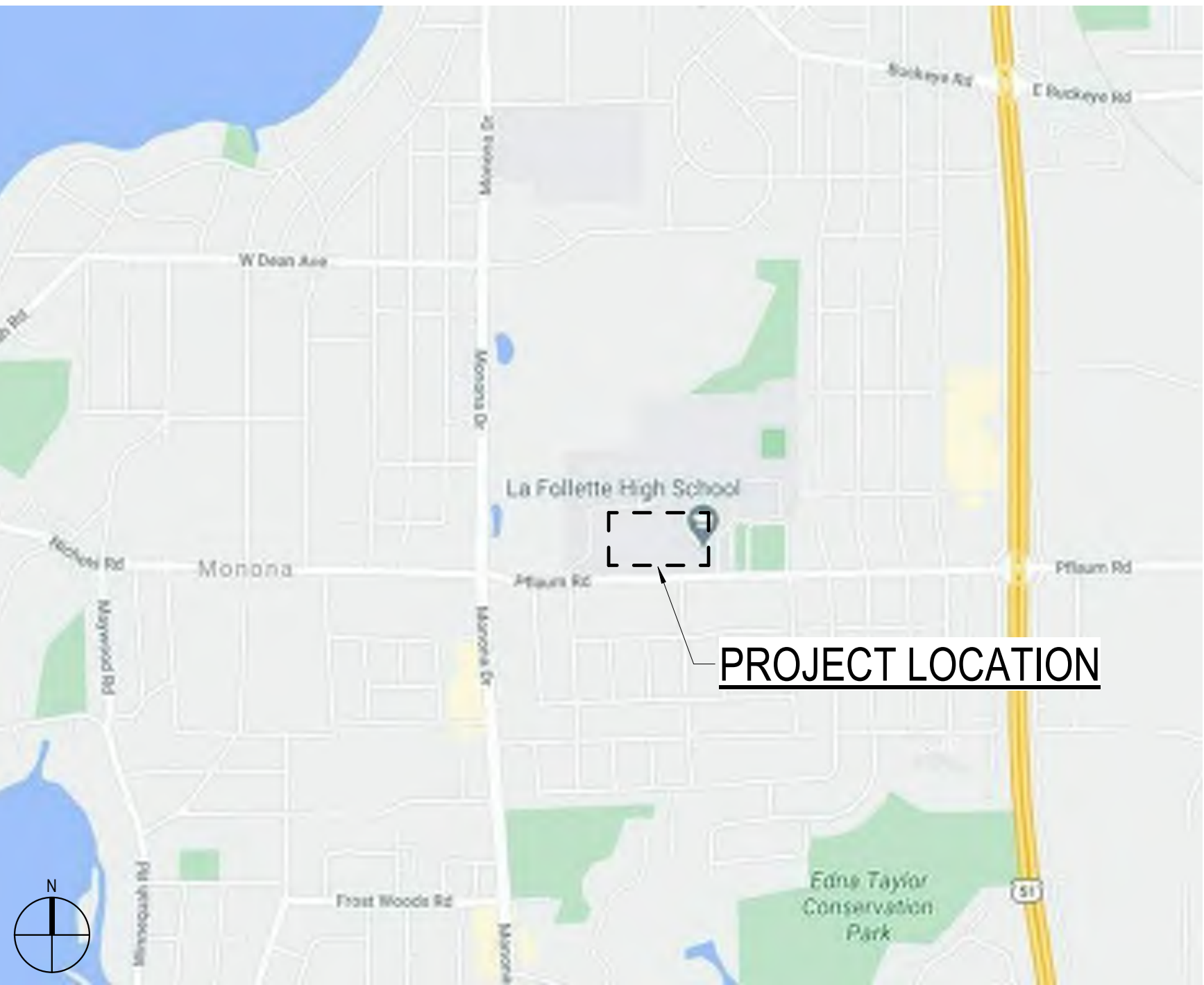


SHEET NUMBER	SHEET NAME
G01	UDC COVER
G02	SITE LOCATION AND AERIAL VIEW
C100	SITE PLAN
L100	LANDSCAPE EXISTING CONDITIONS
L101	LANDSCAPE PLAN
L102	LANDSCAPE PLAN ENLARGEMENTS
L200	LANDSCAPE DETAILS
A00	EXISTING SITE PHOTOS
A02	CONTEXTUAL SITE PHOTOS
A03	FIRST FLOOR PLAN
A04	SECOND FLOOR PLAN
A05	EXTERIOR AXONOMETRIC VIEWS
A06	EXTERIOR AXONOMETRIC VIEWS
A07	EXTERIOR ELEVATIONS
A08	EXTERIOR ELEVATIONS
E001	SITE PHOTOMETRICS - OVERALL
E002	SITE PHOTOMETRICS - NORTH
E003	SITE PHOTOMETRICS - SOUTH

MMSD - LA FOLLETTE HIGH SCHOOL - ADDITION AND RENOVATION

702 PFLAUM ROAD
MADISON, WI 53716



UDC SUBMITTAL

MAY 5, 2021

PROJECT NUMBER: 320537-01



SITE LOCATION

NOT TO SCALE



m i l w a u k e e 333 East Chicago Street
Milwaukee, Wisconsin 53202
414.271.5350

m a d i s o n 309 West Johnson Street, Suite 202
Madison, Wisconsin 53703
608.442.5350

d e n v e r 1899 Wynkoop Street, Suite 300
Denver, Colorado 80202
303.595.4500

PROJECT INFORMATION

MMSD - LA
FOLLETTE HIGH
SCHOOL - ADDITION
AND RENOVATION

702 PFLAUM ROAD
MADISON, WI 53716

ISSUANCE AND REVISIONS

DATE	DESCRIPTION
05/05/2021	UDC SUBMITTAL

KEY PLAN

SHEET INFORMATION

PROJECT MANAGER CO

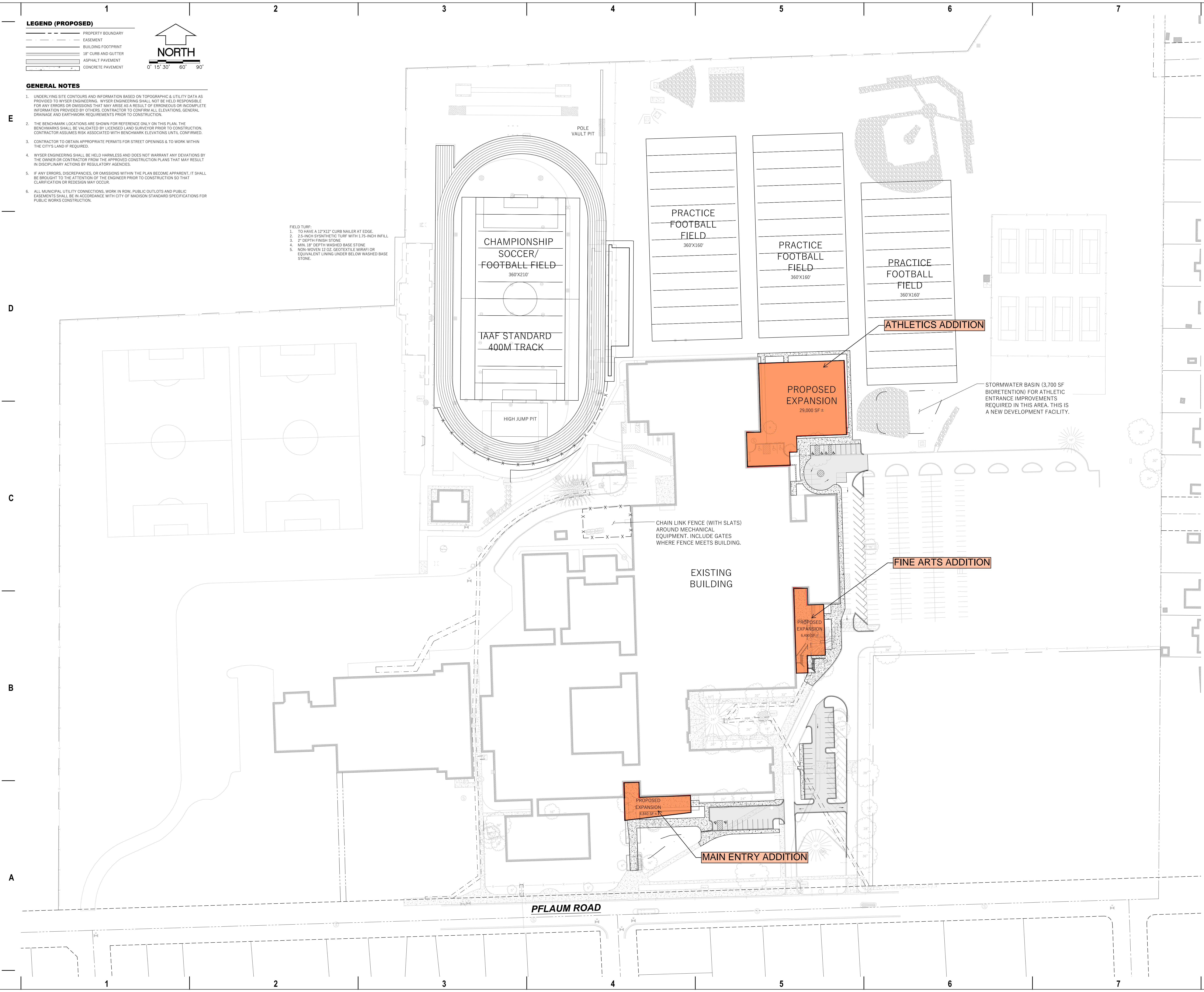
PROJECT NUMBER 320537-01

SITE LOCATION

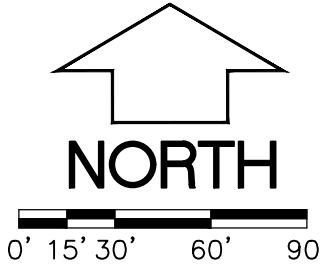
G02

© 2021 Epstein Uhen Architects, Inc.

File: W:\2020\200696_MMSD - Planned Referendum Projects\dwg\Lafayette HS Civil Design.dwg Layout: Site Plan User: adamw Plotted: Mar 22, 2021 - 4:26pm



- LEGEND (PROPOSED)**
- PROPERTY BOUNDARY
 - EASEMENT
 - BUILDING FOOTPRINT
 - 18" CURB AND GUTTER
 - ASPHALT PAVEMENT
 - CONCRETE PAVEMENT



GENERAL NOTES

- UNDERLYING SITE CONTOURS AND INFORMATION BASED ON TOPOGRAPHIC & UTILITY DATA AS PROVIDED TO WYSER ENGINEERING. WYSER ENGINEERING SHALL NOT BE HELD RESPONSIBLE FOR ANY ERRORS OR OMISSIONS THAT MAY ARISE AS A RESULT OF ERRONEOUS OR INCOMPLETE INFORMATION PROVIDED BY OTHERS. CONTRACTOR TO CONFIRM ALL ELEVATIONS, GENERAL DRAINAGE AND EARTHWORK REQUIREMENTS PRIOR TO CONSTRUCTION.
- THE BENCHMARK LOCATIONS ARE SHOWN FOR REFERENCE ONLY ON THIS PLAN. THE BENCHMARKS SHALL BE VALIDATED BY LICENSED LAND SURVEYOR PRIOR TO CONSTRUCTION. CONTRACTOR ASSUMES RISK ASSOCIATED WITH BENCHMARK ELEVATIONS UNTIL CONFIRMED.
- CONTRACTOR TO OBTAIN APPROPRIATE PERMITS FOR STREET OPENINGS & TO WORK WITHIN THE CITY'S LAND IF REQUIRED.
- WYSER ENGINEERING SHALL BE HELD HARMLESS AND DOES NOT WARRANT ANY DEVIATIONS BY THE OWNER OR CONTRACTOR FROM THE APPROVED CONSTRUCTION PLANS THAT MAY RESULT IN DISCIPLINARY ACTIONS BY REGULATORY AGENCIES.
- IF ANY ERRORS, DISCREPANCIES, OR OMISSIONS WITHIN THE PLAN BECOME APPARENT, IT SHALL BE BROUGHT TO THE ATTENTION OF THE ENGINEER PRIOR TO CONSTRUCTION SO THAT CLARIFICATION OR REDESIGN MAY OCCUR.
- ALL MUNICIPAL UTILITY CONNECTIONS, WORK IN ROW, PUBLIC OUTLOTS AND PUBLIC EASEMENTS SHALL BE IN ACCORDANCE WITH CITY OF MADISON STANDARD SPECIFICATIONS FOR PUBLIC WORKS CONSTRUCTION.

- FIELD TURF:
- TO HAVE A 12"x12" CURB NAILER AT EDGE.
 - 2.5-INCH SYNTHETIC TURF WITH 1.75-INCH INFILL
 - 2" DEPTH FINISH STONE
 - MIN. 18" DEPTH WASHED BASE STONE
 - NON-WOVEN 32 OZ. GEOTEXTILE MIMAF OR EQUIVALENT LINING UNDER BELOW WASHED BASE STONE.



milwaukee 333 East Chicago Street
Milwaukee, Wisconsin 53202
414.271.5350

madison 309 West Johnson Street, Suite 202
Madison, Wisconsin 53703
608.442.2590

denver 1899 Wynkoop Street, Suite 300
Denver, Colorado 80202
303.595.4500

PROJECT INFORMATION

**MMSD - LA
FOLLETTE HIGH
SCHOOL - ADDITION
AND RENOVATION**

**702 PFLAUM ROAD
MADISON, WI 53716**

ISSUANCE AND REVISIONS

DATE	DESCRIPTION
05/05/2021	UDC SUBMITTAL

KEY PLAN

SHEET INFORMATION

**PROGRESS DOCUMENTS
NOT FOR CONSTRUCTION**

These documents reflect progress and intent and may be subject to change, including additional detail. These are not final construction documents and shall not be used for final bidding or construction-related purposes.

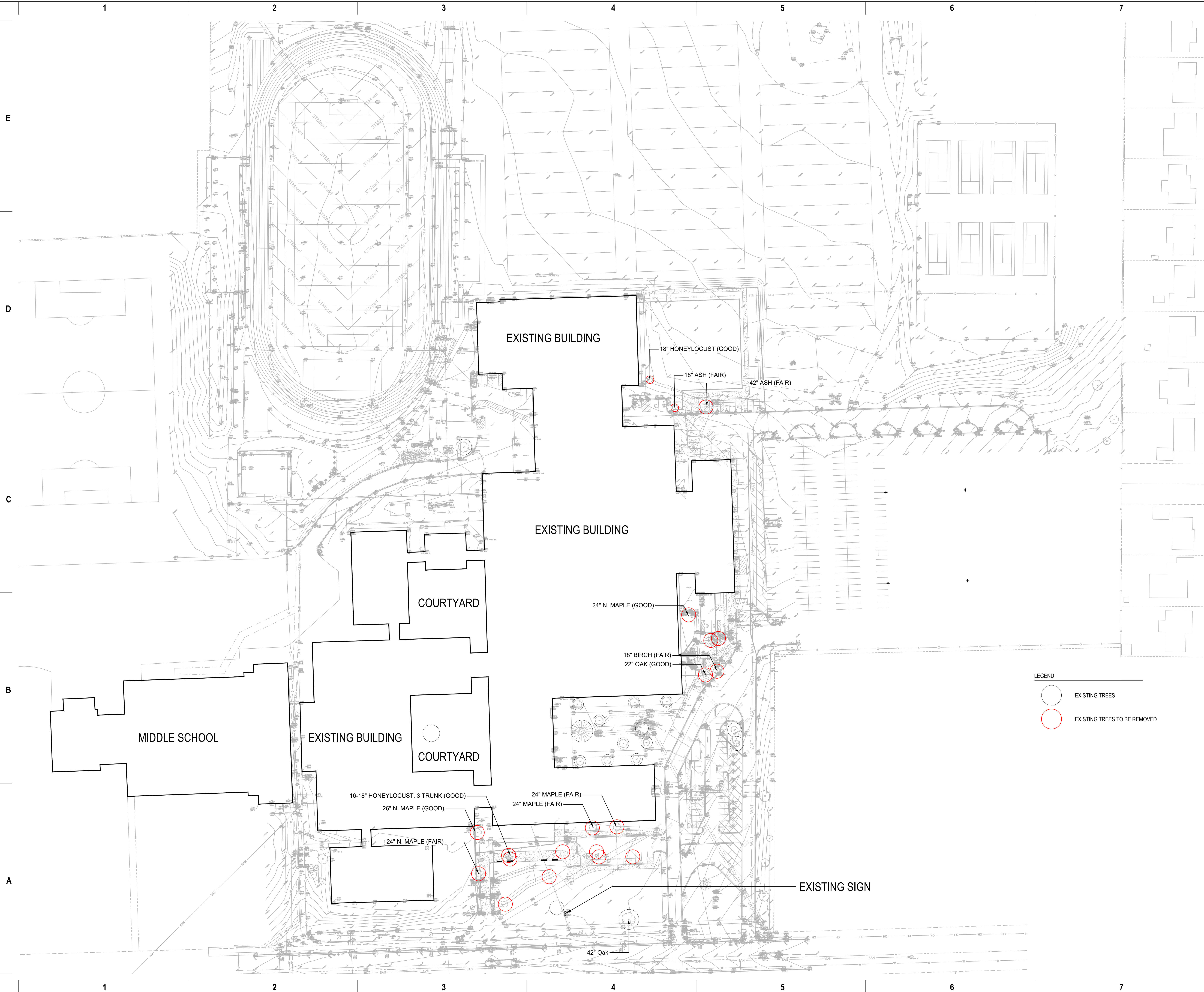
PROJECT MANAGER CO

PROJECT NUMBER 320537-01

SITE PLAN

C100

© 2021 Epstein Uhan Architects, Inc.



milwaukee 333 East Chicago Street
Milwaukee, Wisconsin 53202
414.271.5350

madison 309 West Johnson Street, Suite 202
Madison, Wisconsin 53703
608.442.5350

denver 1699 Wynkoop Street, Suite 300
Denver, Colorado 80202
303.595.4500

PROJECT INFORMATION

MMSD - LA
FOLLETTE HIGH
SCHOOL - ADDITION
AND RENOVATION

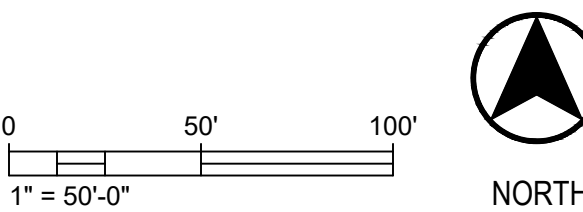
702 PFLAUM ROAD
MADISON, WI 53716

ISSUANCE AND REVISIONS

DATE	DESCRIPTION
05/04/2021	UDC INITIAL APPROVAL

KEY PLAN

- LEGEND
- EXISTING TREES
 - EXISTING TREES TO BE REMOVED



SHEET INFORMATION

PROGRESS DOCUMENTS
NOT FOR CONSTRUCTION

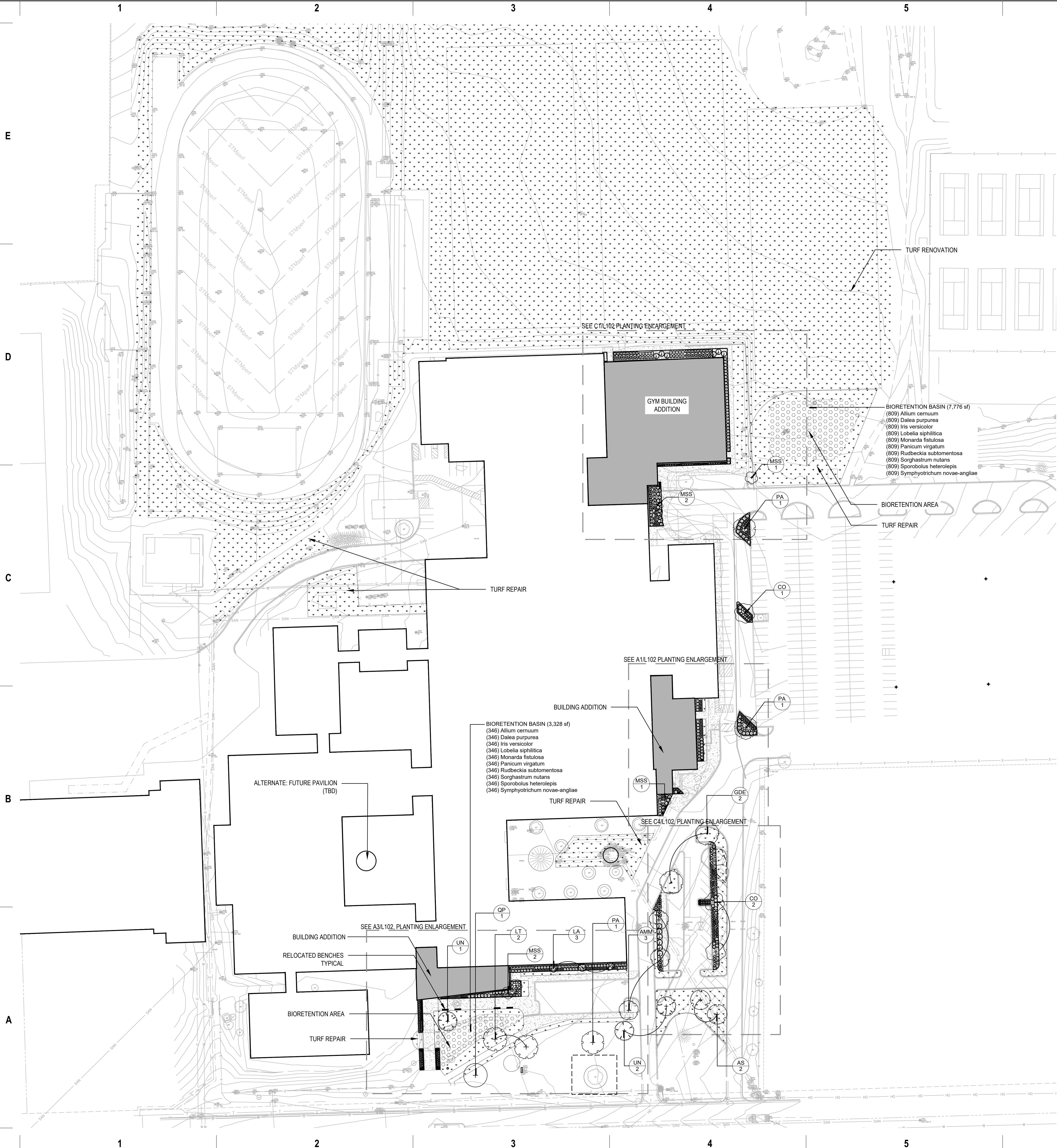
These documents reflect progress and intent and may be subject to change, including additional detail. These are not final construction documents and shall not be used for final bidding or construction-related purposes.

PROJECT MANAGER CO
PROJECT NUMBER 320537-01

LANDSCAPE
EXISTING CONDITIONS

L100

© 2021 Eppstein Uhen Architects, Inc.



PLANT SCHEDULE					
DECIDUOUS TREES	CODE	QTY	BOTANICAL / COMMON NAME	CONT	SIZE
	AMM	3	Acer miyabei 'Morton' TM / State Street Miyabei Maple	B&B	3"Cal
	AS	2	Acer saccharum 'Green Mountain' / Green Mountain Sugar Maple	B&B	2.5"Cal
	CO	3	Celtis occidentalis 'ChicagoLand' / ChicagoLand Common Hackberry	B&B	2.5"Cal
	GDE	2	Gymnocladus dioica 'Espresso' / Espresso Coffeetree	B & B	2"Cal
	LT	2	Liriodendron tulipifera / Tulip Poplar	B&B	3"Cal
	LA	3	Liriodendron tulipifera 'Arnold' / Arnold Tulip Poplar	B&B	2.5"Cal
	MSS	6	Malus x 'Spring Snow' / Spring Snow Crabapple	B&B	2.5"Cal
	PA	3	Platanus x acerifolia 'Bloodgood' / Bloodgood London Plane Tree	B&B	3"Cal
	QP	1	Quercus patulastris / Pin Oak	B & B	2.5"Cal
	UN	3	Ulmus x 'New Horizon' / New Horizon Elm	B&B	2.5"Cal

NOTE: PLANTING LEGEND FOR GRASSES, PERENNIALS, SHRUBS AND BIORETENTION AREAS CAN BE FOUND ON L102.

LEGEND	
	BLUEGRASS SEED
	LANDSCAPE AREA: SHRUB/ PERENNIAL BED WITH SHREDDED BARK MULCH & METAL EDGING
	BIORETENTION PLUGS
	TREE PROTECTION



m i l w a u k e e 333 East Chicago Street
Milwaukee, Wisconsin 53202
414.271.5350
m a d i s o n 309 West Johnson Street, Suite 202
Madison, Wisconsin 53703
608.442.5350
d e n v e r 1899 Wynkoop Street, Suite 300
Denver, Colorado 80202
303.595.4500

PROJECT INFORMATION

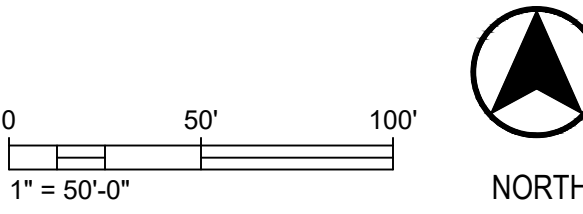
MMSD - LA
FOLLETTE HIGH
SCHOOL - ADDITION
AND RENOVATION

702 PFLAUM ROAD
MADISON, WI 53716

ISSUANCE AND REVISIONS

DATE	DESCRIPTION
05/04/2021	UDC INITIAL APPROVAL

KEY PLAN



SHEET INFORMATION

PROGRESS DOCUMENTS
NOT FOR CONSTRUCTION

These documents reflect progress and intent and may be subject to change, including additional detail. These are not final construction documents and shall not be used for final bidding or construction-related purposes.

PROJECT MANAGER CO

PROJECT NUMBER 320537-01

LANDSCAPE PLAN

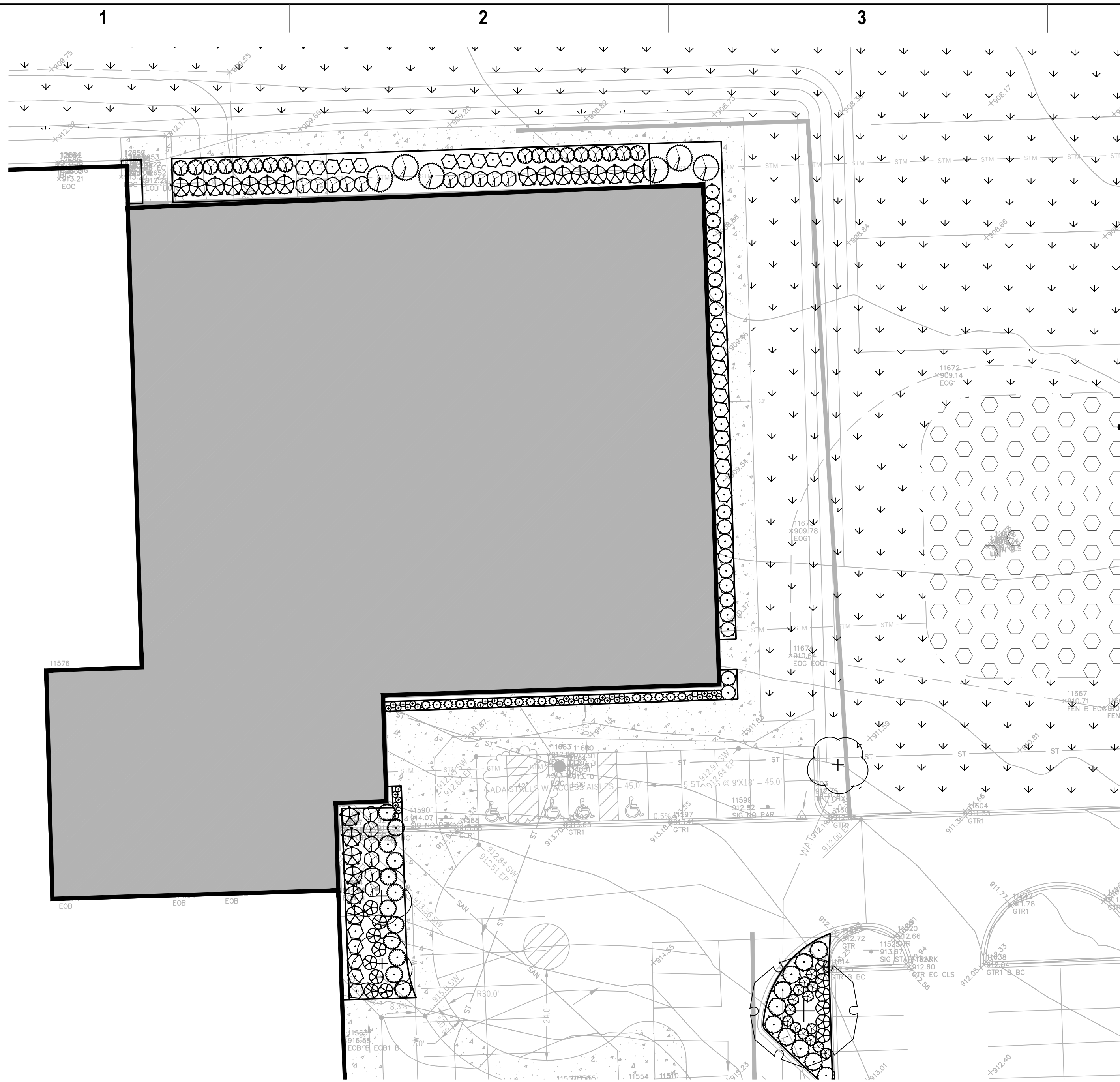
L101

© 2021 Epstein Uhen Architects, Inc.

E

D

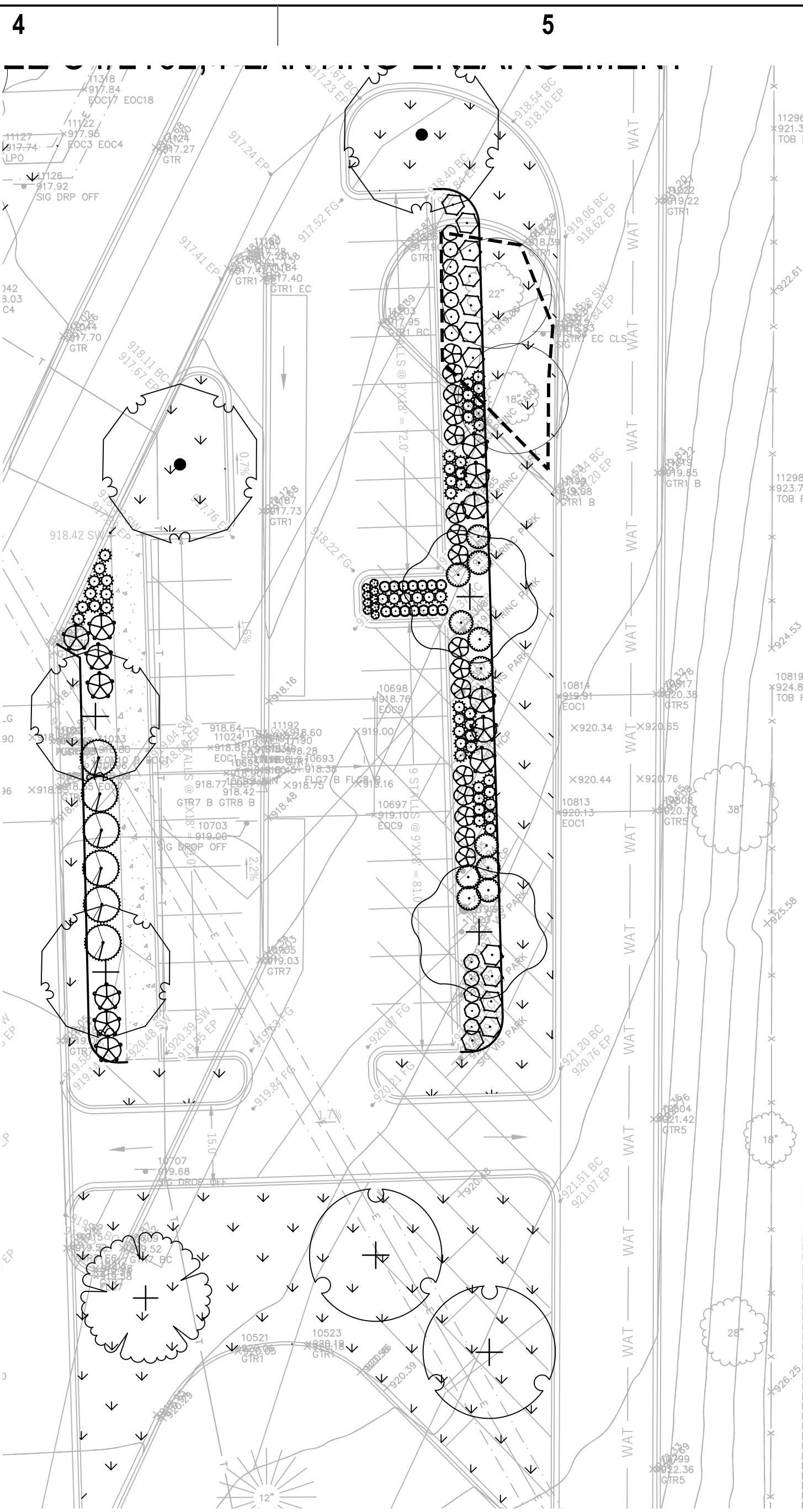
C



C1 PLANTING ENLARGEMENT 3
SCALE: 1" = 20'-0"

4

C4



C4 PLANTING ENLARGEMENT 4
SCALE: 1" = 20'-0"

6

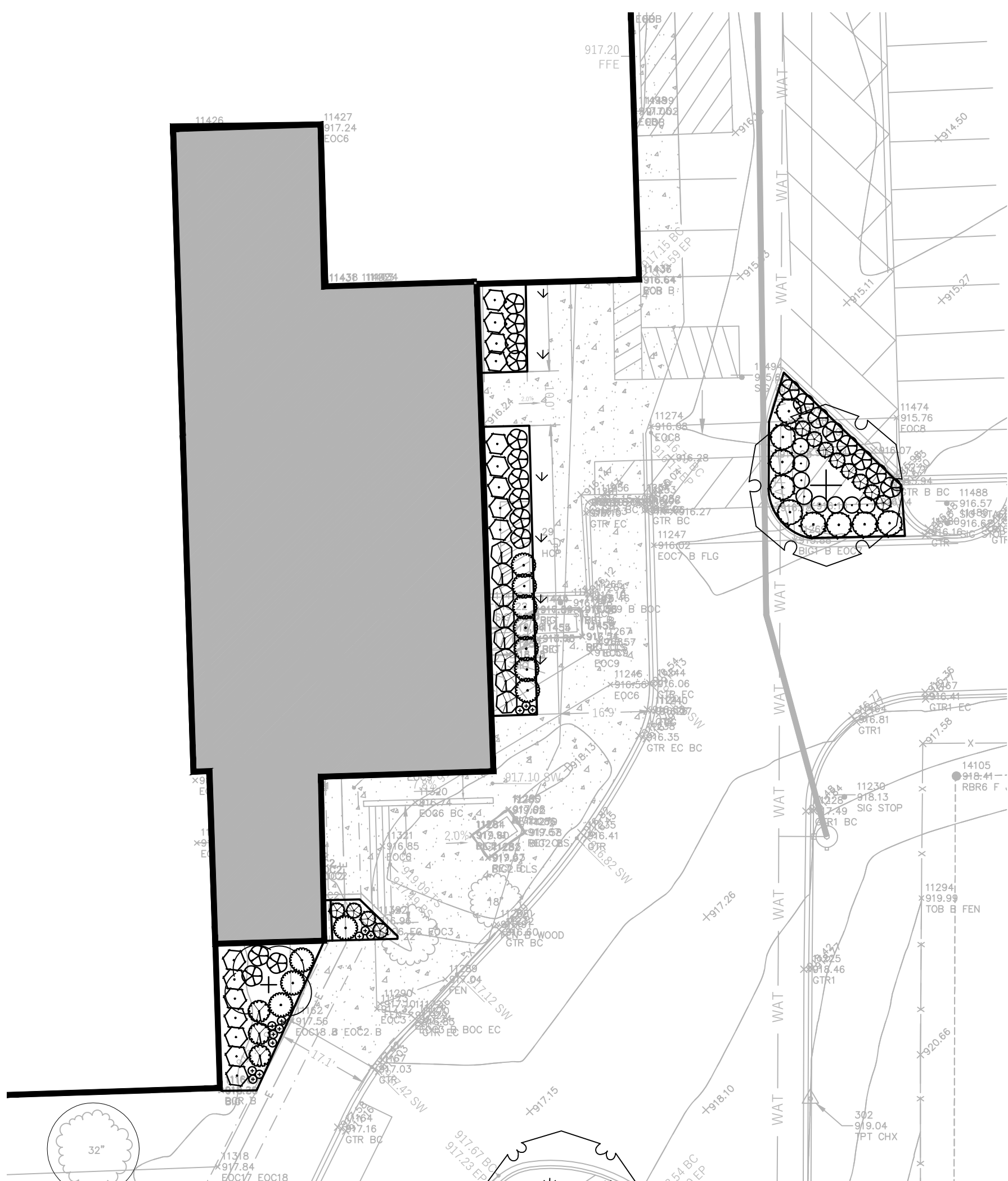
PLANT SCHEDULE

EVERGREEN SHRUBS			CODE	QTY	BOTANICAL / COMMON NAME	CONT		
○		Jm	28	Juniperus sabina 'Monna' / Calgary Carpet Juniper	3 gal			
○		JK	34	Juniperus x pfitzeriana 'Kallay's Compact' / Juniper	3 gal			
○		Tm	82	Taxus x media 'Densaformis' / Dense Yew	3 gal			
ORNAMENTAL GRASSES			CODE	QTY	BOTANICAL / COMMON NAME	CONT		
•		sh	98	Sporobolus heterolepis 'Tara' / Prairie Dropseed	1 gal			
DECIDUOUS SHRUBS			CODE	QTY	BOTANICAL / COMMON NAME	CONT		
⊙		Aa	43	Aronia arbutifolia 'Brilliantissima' / Brilliant Red Chokeberry	3 gal			
○		Cf	36	Cornus stolonifera 'Farrow' TM / Arctic Fire Red Twig Dogwood	3 gal			
○		Cl	27	Diervilla lonicera 'Michigan Sunset' / Dwarf Bush Honeysuckle	3 gal			
⊙		Fm	12	Forsythia x 'Meadowlark' / Meadowlark Forsythia	5 gal			
•		Hb	71	Hydrangea paniculata 'ILVOBO' TM / Bobo Panicked Hydrangea	3 gal			
⊙		Pd	30	Physocarpus opulifolius 'Donna May' TM / Little Devil Ninebark	3 gal			
○		St	12	Spiraea betulifolia 'Tor' / Tor Birchleaf Spirea	3 gal			
•		Ss2	30	Spiraea japonica 'Little Princess' / Little Princess Japanese Spirea	3 gal			
⊙		Vd	33	Viburnum carlesii 'Diana' / Diana Koreanspice Viburnum	5 gal			
HERBACEOUS PERENNIALS			CODE	QTY	BOTANICAL / COMMON NAME	CONT		
•		As2	88	Allium x 'Summer Beauty' / Summer Beauty Ornamental Onion	1 gal			
•		abi	18	Amsonia x 'Blue Ice' / Blue Ice Bluestar	1 gal			
•		cnm	53	Calamintha nepeta 'Montrose White' / Montrose White Calamint	1 gal			
•		lv2	19	Iris virginica / Blue Flag Iris	1 gal			
•		Nw	34	Nepeta x 'Walker's Low' / Walker's Low Catmint	1 gal			
•		sed au	37	Sedum x 'Autumn Joy' / Autumn Joy Sedum	1 gal			
GROUND COVERS			CODE	QTY	BOTANICAL / COMMON NAME	CONT	CAL	SPACING
		11,104 sf			BIORETENTION BASIN			
		acn	1,154		Allium cernuum / Nodding Onion	3" plug		10% @ 12" o.c.
		dpp	1,154		Dalea purpurea / Purple Prairie Clover	3" plug		10% @ 12" o.c.
		lvb	1,154		Iris versicolor / Blue Flag	3" plug		10% @ 12" o.c.
		lsg	1,154		Lobelia siphilitica / Great Lobelia	3" plug		10% @ 12" o.c.
		mfb	1,154		Monarda fistulosa / Bergamot	3" plug		10% @ 12" o.c.
		pvg	1,154		Panicum virgatum / Switch Grass	3" plug		10% @ 12" o.c.
		rss	1,154		Rudbeckia subtomentosa / Sweet Black-eyed Susan	3" plug		10% @ 12" o.c.
		sng	1,154		Sorghastrum nutans / Indian Grass	3" plug		10% @ 12" o.c.
		shp	1,154		Sporobolus heterolepis / Prairie Dropseed	3" plug		10% @ 12" o.c.
		sna	1,154		Symphoricarpos novae-angliae / New England Aster	3" plug		10% @ 12" o.c.

NOTE: PLANTING LEGEND FOR TREES CAN BE FOUND ON L101.

B

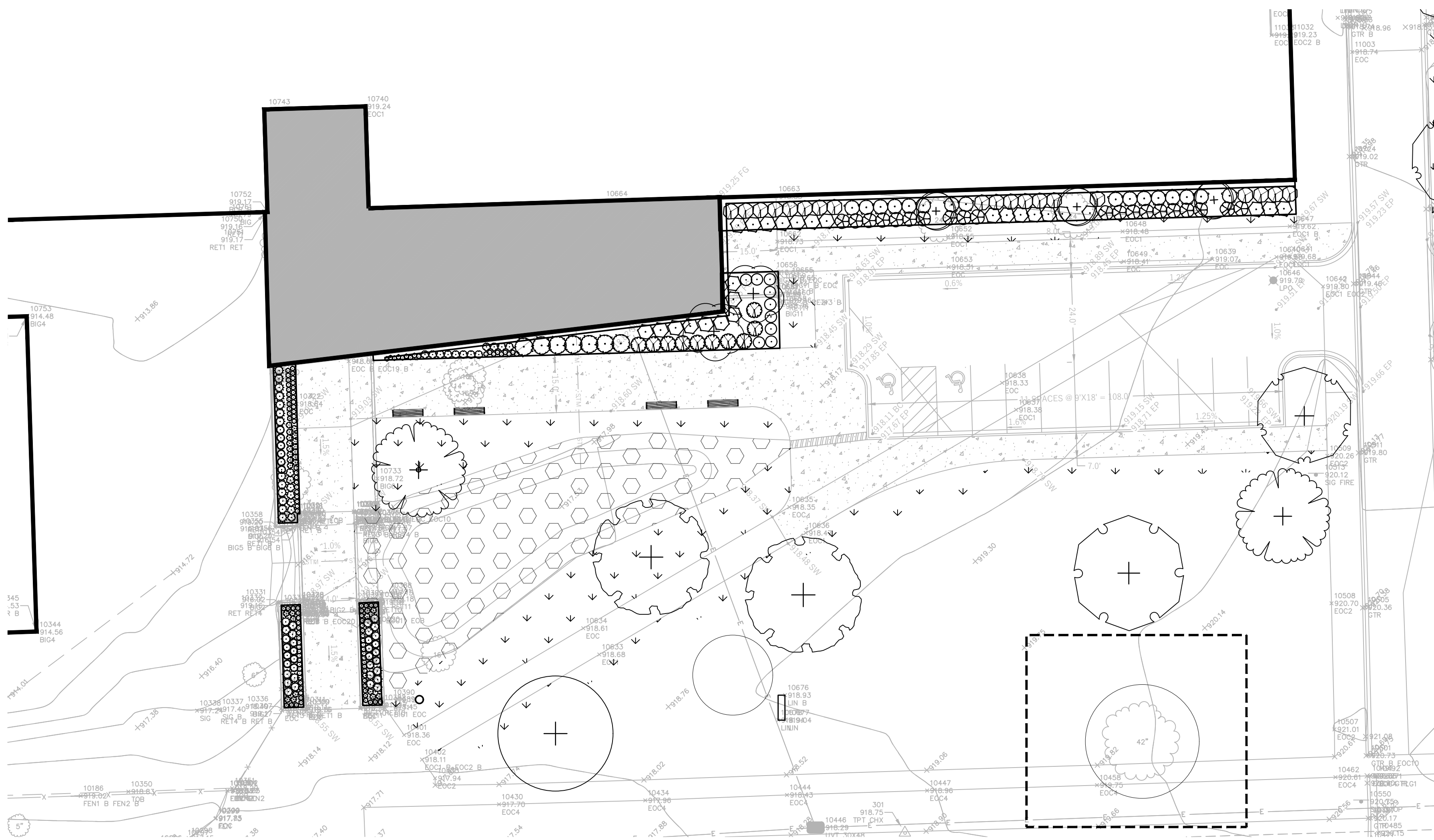
A



A1 PLANTING ENLARGEMENT 1
SCALE: 1" = 20'-0"

A3

A3 PLANTING ENLARGEMENT 2
SCALE: 1" = 20'-0"



PROJECT INFORMATION

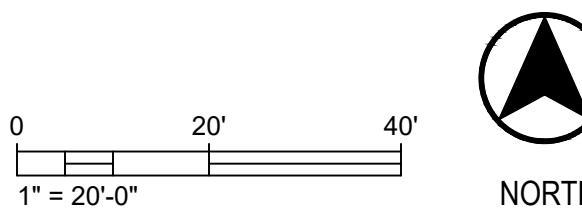
MMSD - LA
FOLLETTE HIGH
SCHOOL - ADDITION
AND RENOVATION

702 PFLAUM ROAD
MADISON, WI 53716

ISSUANCE AND REVISIONS

DATE	DESCRIPTION
05/04/2021	UDC INITIAL APPROVAL

KEY PLAN



SHEET INFORMATION

PROGRESS DOCUMENTS
NOT FOR CONSTRUCTION

These documents reflect progress and intent and may be subject to change, including additional detail. These are not final construction documents and shall not be used for final bidding or construction-related purposes.

PROJECT MANAGER CO

PROJECT NUMBER 320537-01

LANDSCAPE PLAN
ENLARGEMENTS

L102

© 2021 Epstein Uhen Architects, Inc.



milwaukee 333 East Chicago Street
Milwaukee, Wisconsin 53202
414.271.5350
madison 309 West Johnson Street, Suite 202
Madison, Wisconsin 53703
608.442.5350
denver 1899 Wynkoop Street, Suite 300
Denver, Colorado 80202
303.595.4500

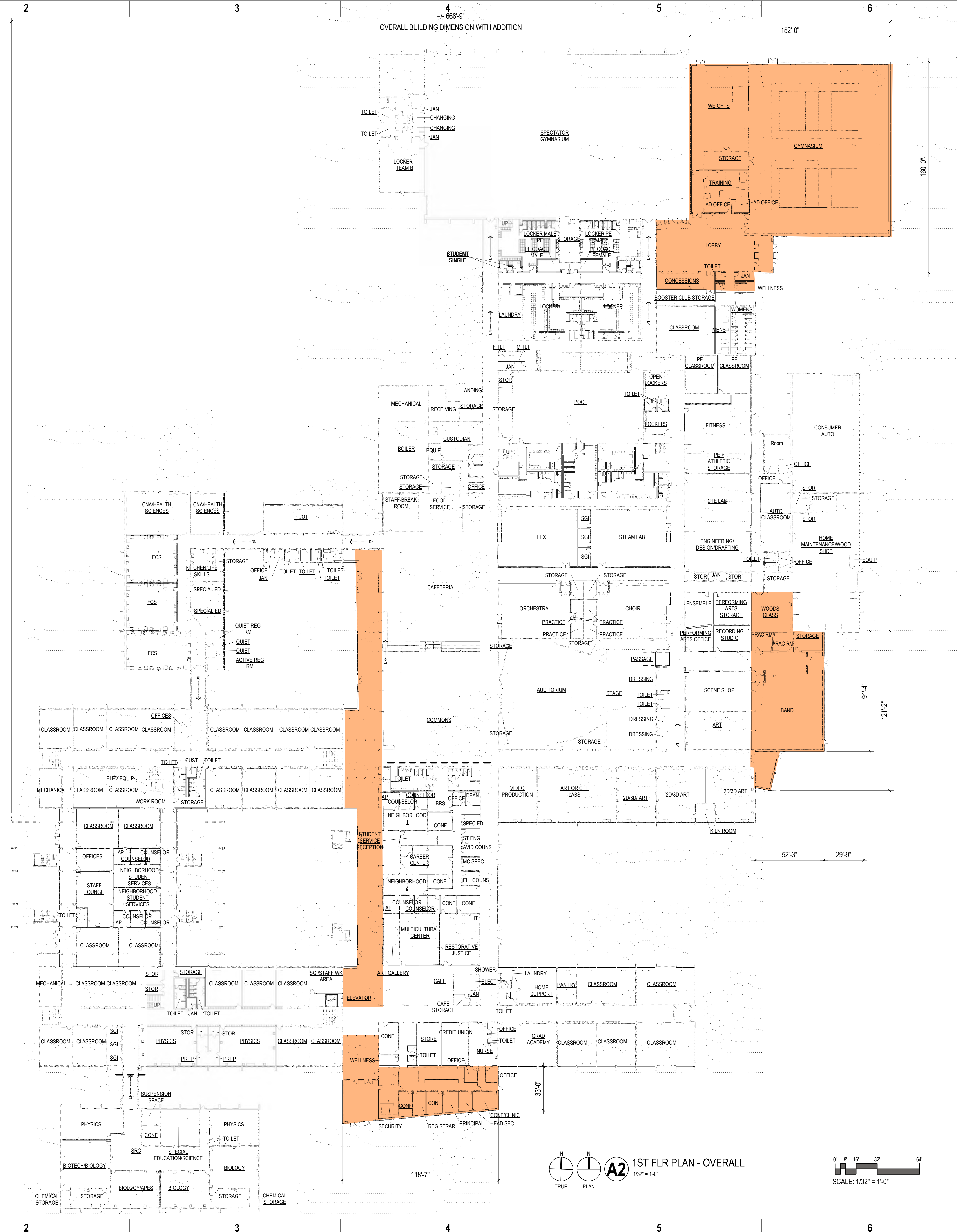
E

D

C

B

A

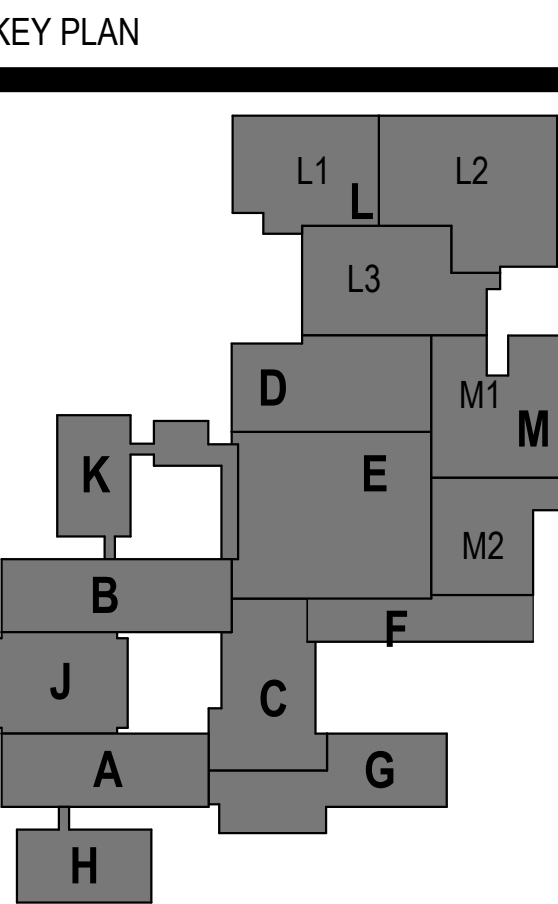


milwaukee 333 East Chicago Street
Milwaukee, Wisconsin 53202
414.271.5350
madison 309 West Johnson Street, Suite 202
Madison, Wisconsin 53703
608.442.5550
denver 1899 Wynkoop Street, Suite 300
Denver, Colorado 80202
303.595.4500

PROJECT INFORMATION
MMSD - LA
FOLLETTE HIGH
SCHOOL - ADDITION
AND RENOVATION

702 PFLAUM ROAD
MADISON, WI 53716

ISSUANCE AND REVISIONS	
DATE	DESCRIPTION
05/05/2021	UDC SUBMITTAL



SHEET INFORMATION

PROJECT MANAGER CO
PROJECT NUMBER 320537-01

FIRST FLOOR PLAN
A03

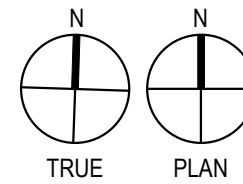
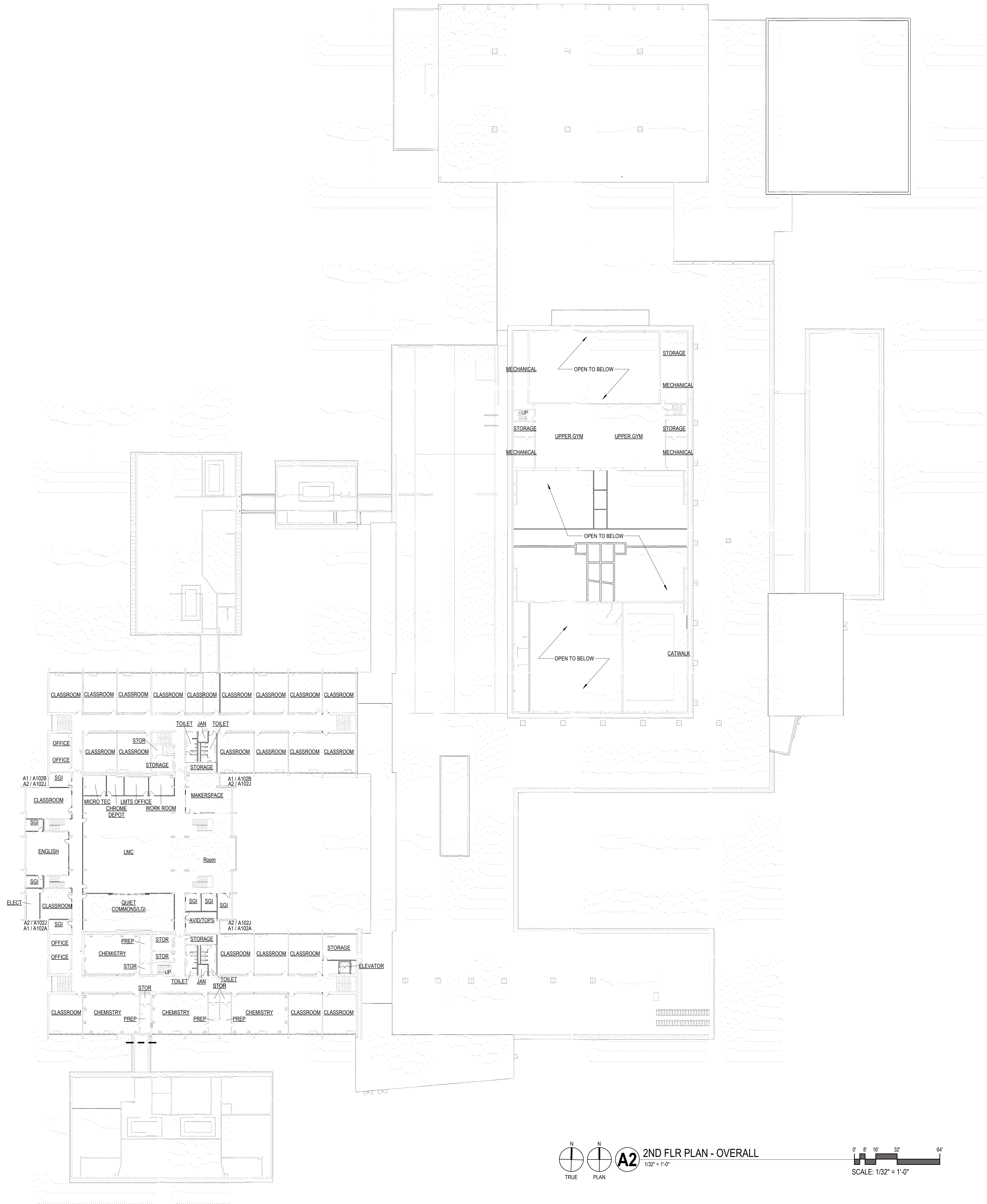
E

D

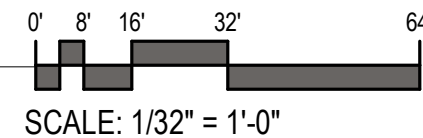
C

B

A



A2 2ND FLR PLAN - OVERALL
1/32" = 1'-0"



SCALE: 1/32" = 1'-0"



milwaukee 333 East Chicago Street
Milwaukee, Wisconsin 53202
414.271.5350

madison 309 West Johnson Street, Suite 202
Madison, Wisconsin 53703
608.442.5350

denver 1899 Wynkoop Street, Suite 300
Denver, Colorado 80202
303.595.4500

PROJECT INFORMATION

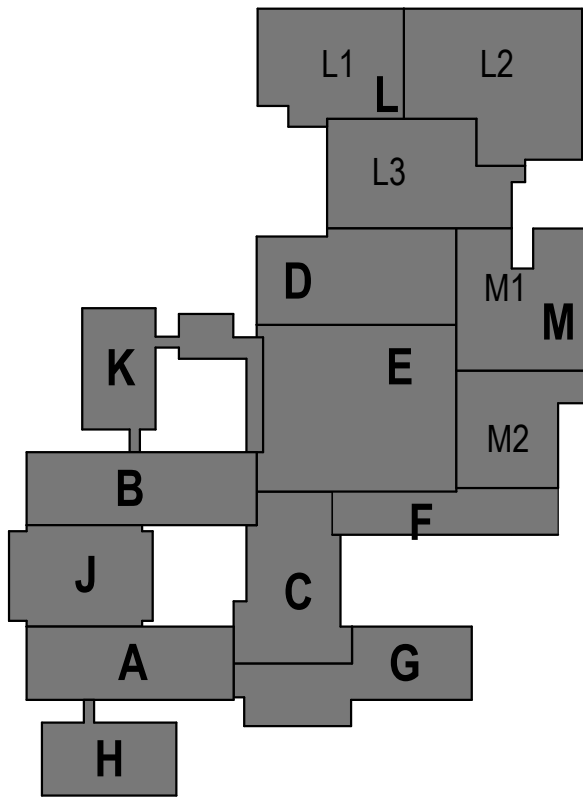
**MMSD - LA
FOLLETTE HIGH
SCHOOL - ADDITION
AND RENOVATION**

**702 PFLAUM ROAD
MADISON, WI 53716**

ISSUANCE AND REVISIONS

DATE	DESCRIPTION
05/05/2021	UDC SUBMITTAL

KEY PLAN

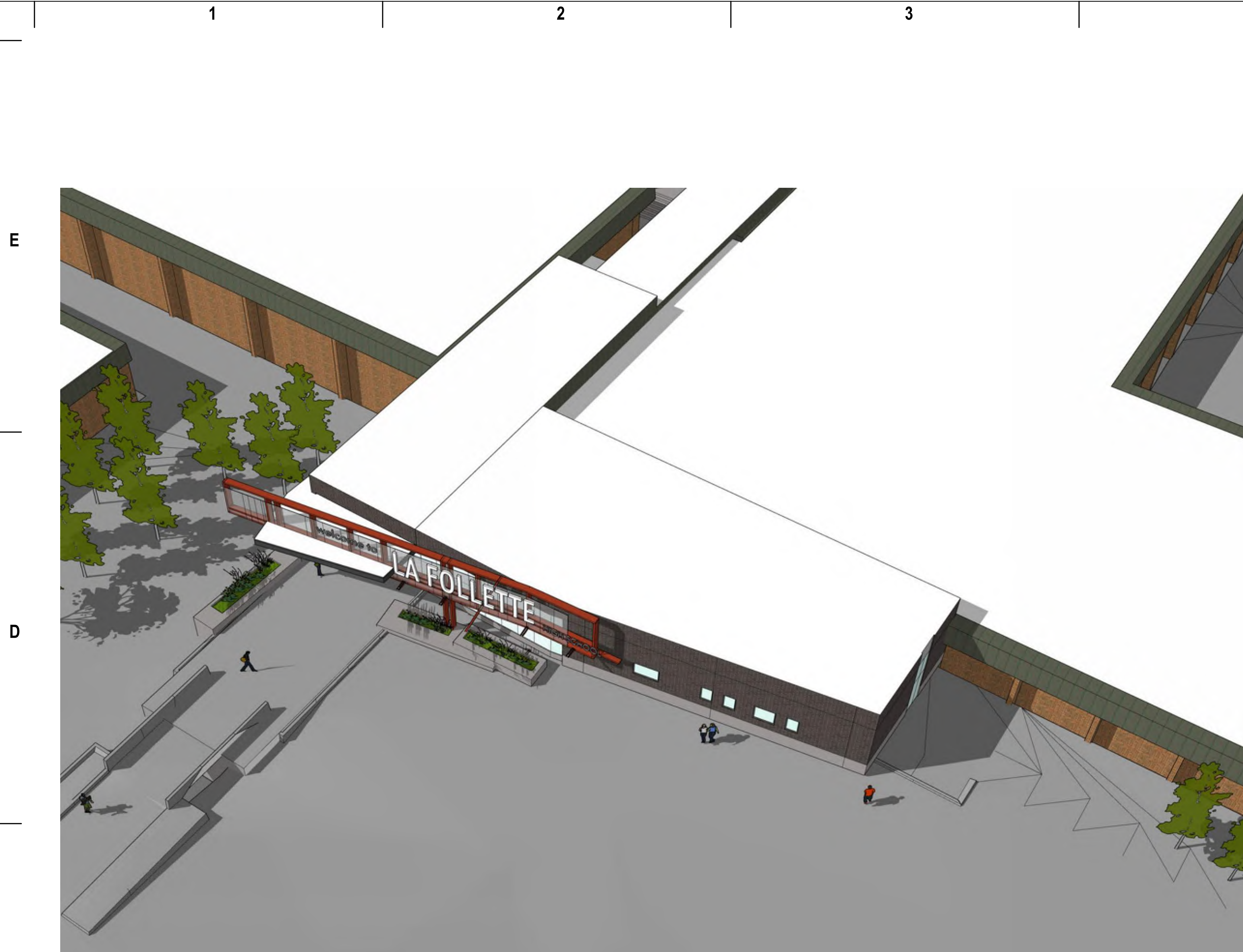


SHEET INFORMATION

PROJECT MANAGER CO
PROJECT NUMBER 320537-01

**SECOND FLOOR
PLAN**

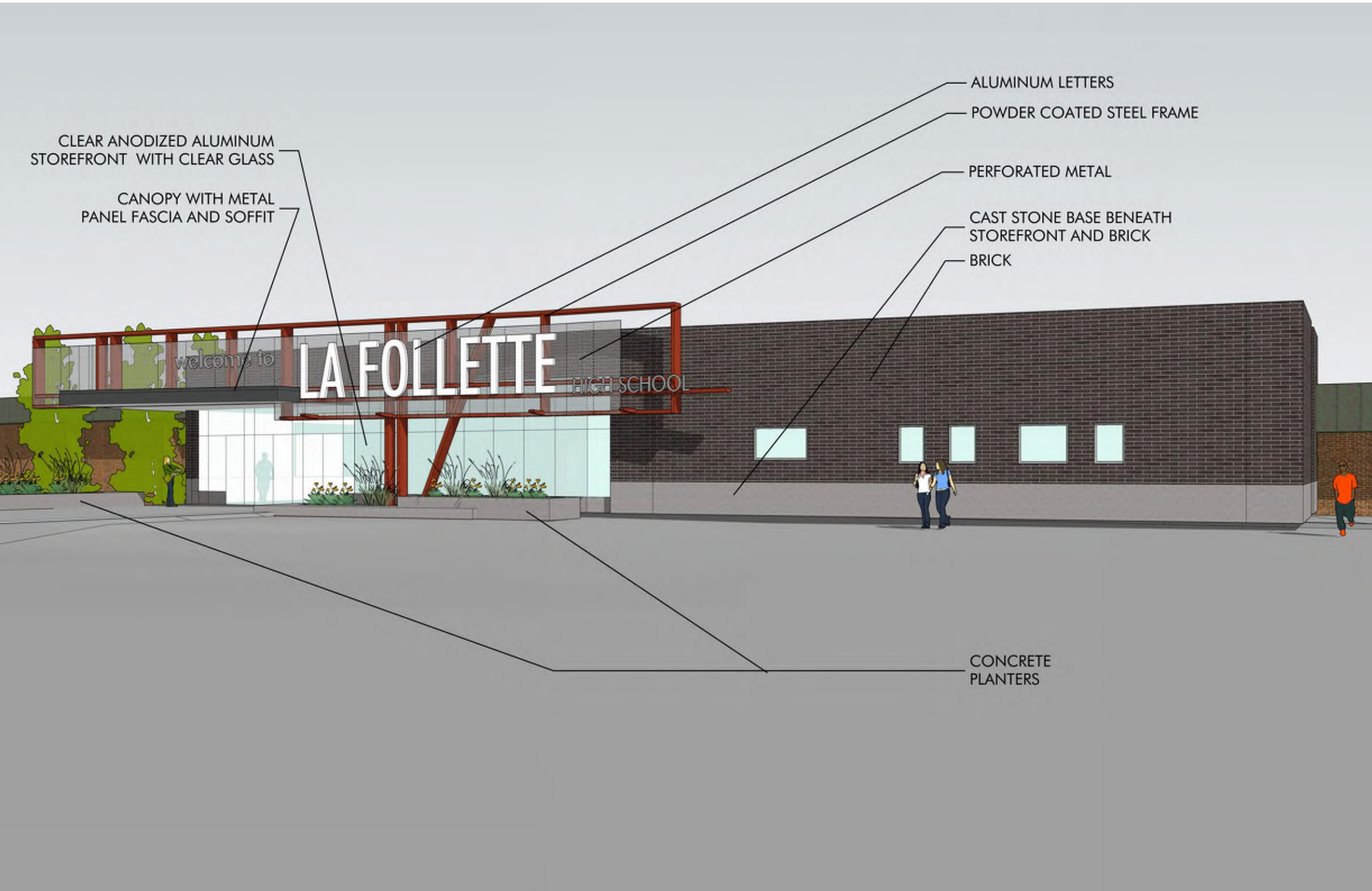
A04



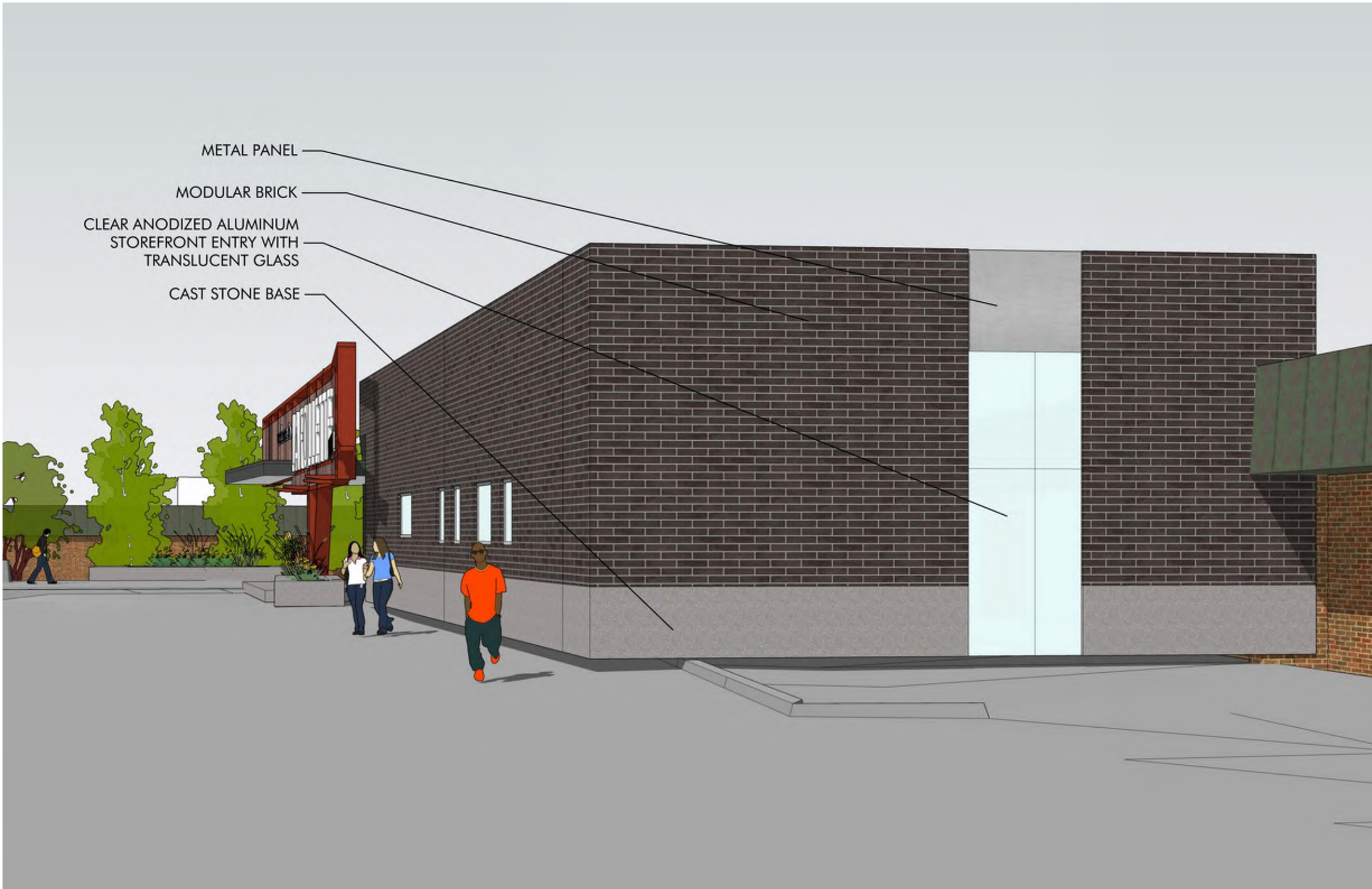
C1 MAIN ENTRY - AXON VIEW
12" = 1'-0"



C4 MAIN ENTRY - SOUTH-WEST
12" = 1'-0"



A1 MAIN ENTRY - SOUTH-EAST
12" = 1'-0"



A4 MAIN ENTRY - EAST
12" = 1'-0"



milwaukee 333 East Chicago Street
Milwaukee, Wisconsin 53202
414.271.5350
madison 309 West Johnson Street, Suite 202
Madison, Wisconsin 53703
608.442.5350
denver 1899 Wynkoop Street, Suite 300
Denver, Colorado 80202
303.595.4500

PROJECT INFORMATION
MMSD - LA FOLLETTE HIGH SCHOOL - ADDITION AND RENOVATION

702 PFLAUM ROAD
MADISON, WI 53716

ISSUANCE AND REVISIONS

DATE	DESCRIPTION
09/26/2021	SCHEMATIC DESIGN

KEY PLAN

SHEET INFORMATION

PROJECT MANAGER CO
PROJECT NUMBER 320537-01

EXTERIOR AXONOMETRIC VIEWS

A05



milwaukee

333 East Chicago Street
Milwaukee, Wisconsin 53202
414.271.5350

madison

309 West Johnson Street, Suite 202
Madison, Wisconsin 53703
608.442.5350

denver

1899 Wynkoop Street, Suite 300
Denver, Colorado 80202
303.595.4500

PROJECT INFORMATION

MMSD - LA
FOLLETTE HIGH
SCHOOL - ADDITION
AND RENOVATION

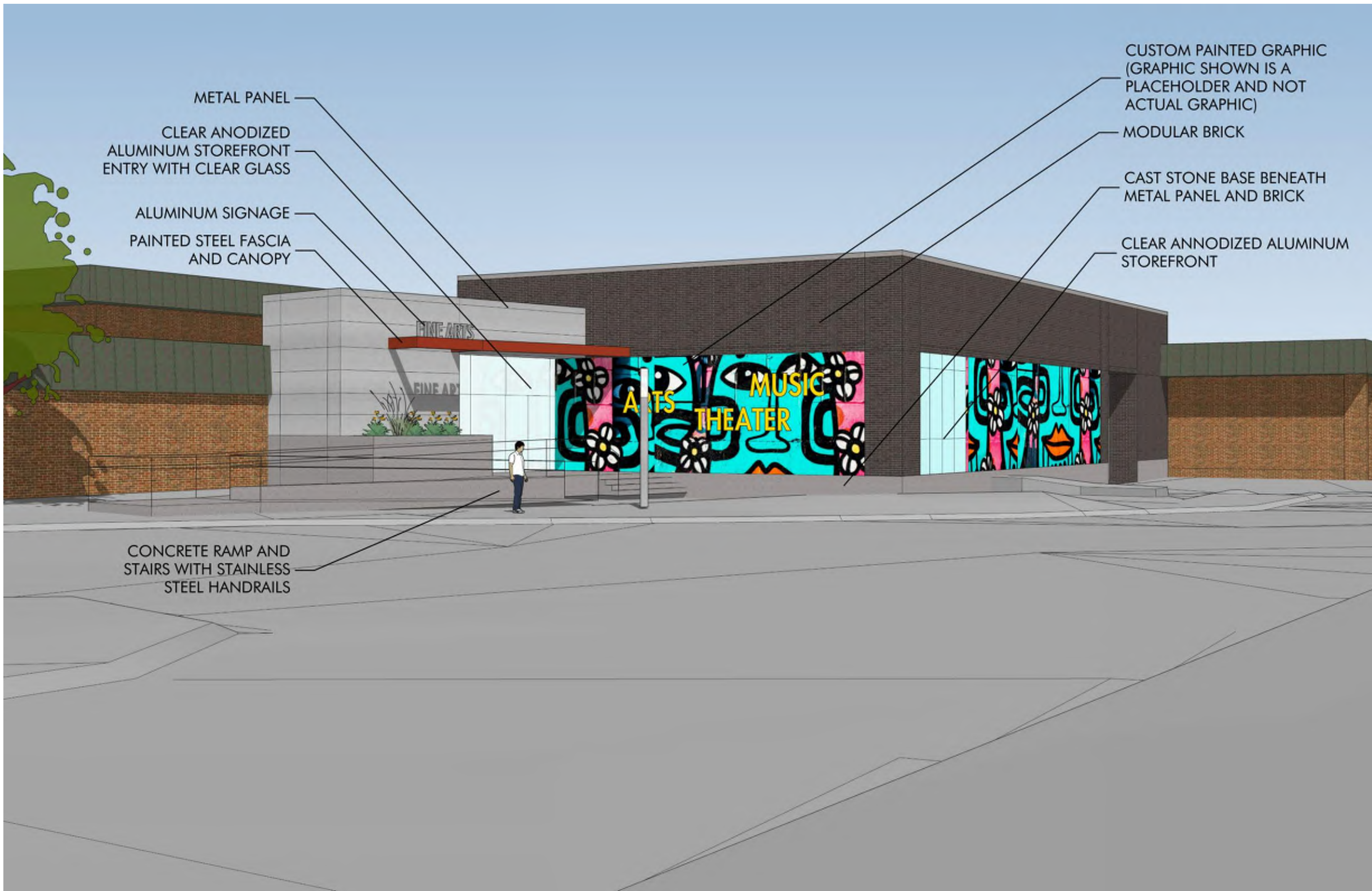
D 702 PFLAUM ROAD
MADISON, WI 53716

ISSUANCE AND REVISIONS

DATE	DESCRIPTION
03/26/2021	SCHEMATIC DESIGN

E

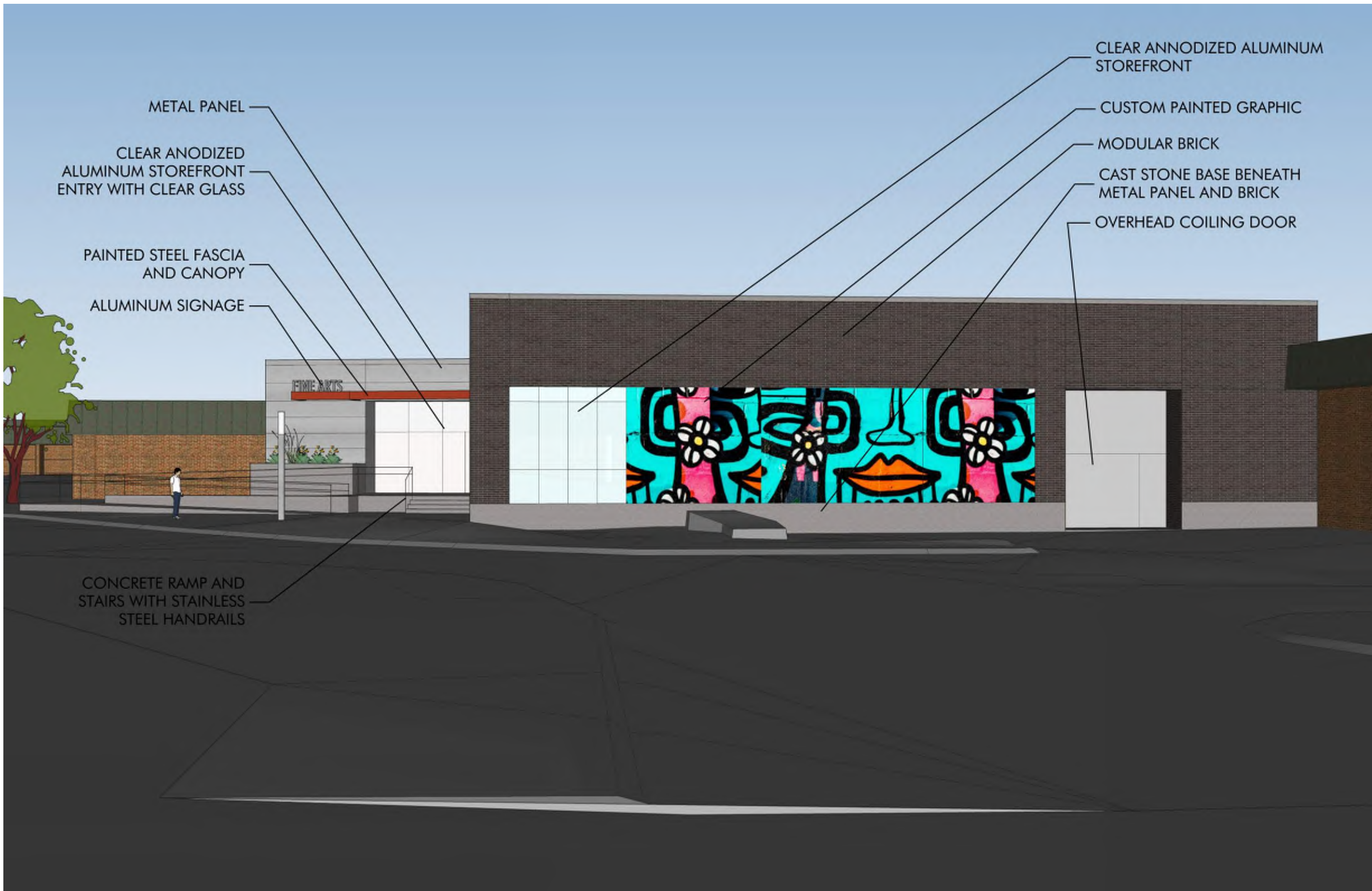
D



C1 FINE ARTS ENTRY - SOUTH-EAST

NTS

C



C4 FINE ARTS ENTRY - EAST

NTS

C

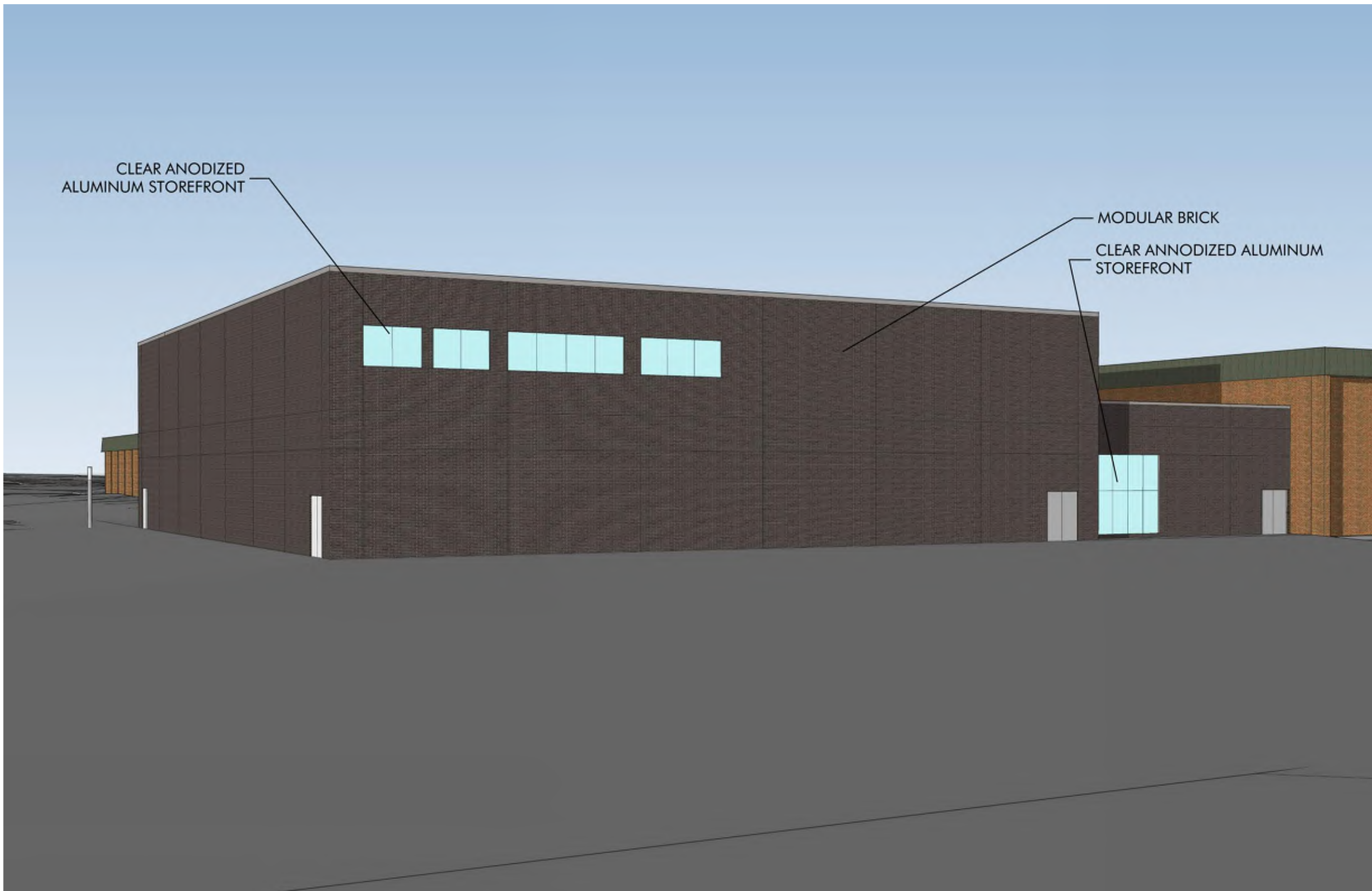
B

A



A1 ATHLETICS ENTRY - SOUTH-EAST

NTS



A4 ATHLETICS ENTRY - NORTH-EAST

NTS

KEY PLAN

SHEET INFORMATION

PROJECT MANAGER CO

PROJECT NUMBER 320537-01

EXTERIOR
AXONOMETRIC
VIEWS

A06



milwaukee 333 East Chicago Street
Milwaukee, Wisconsin 53202
414.271.5350

madison 309 West Johnson Street, Suite 202
Madison, Wisconsin 53703
608.442.5350

denver 1899 Wynkoop Street, Suite 300
Denver, Colorado 80202
303.595.4500

PROJECT INFORMATION

MMSD - LA
FOLLETTE HIGH
SCHOOL - ADDITION
AND RENOVATION

702 PFLAUM ROAD
MADISON, WI 53716

ISSUANCE AND REVISIONS

DATE	DESCRIPTION
05/05/2021	UDC SUBMITTAL

KEY PLAN

SHEET INFORMATION

**PROGRESS DOCUMENTS
NOT FOR CONSTRUCTION**

These documents reflect progress and intent and may be subject to change, including additional detail. These are not final construction documents and shall not be used for final bidding or construction-related purposes.

PROJECT MANAGER CO

PROJECT NUMBER 320537-01

EXTERIOR
ELEVATIONS

A07

© 2021 Epstein Uhan Architects, Inc.

E

D

C

B

A

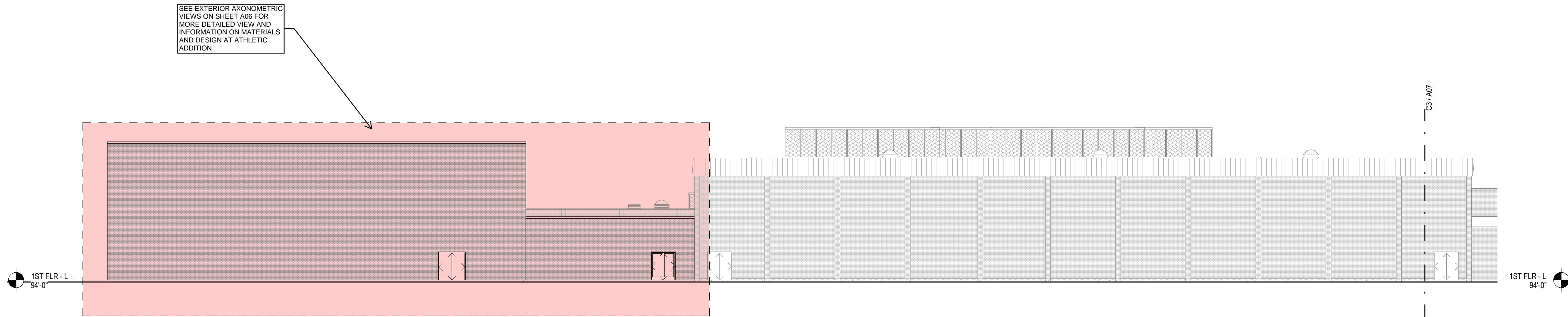
E

D

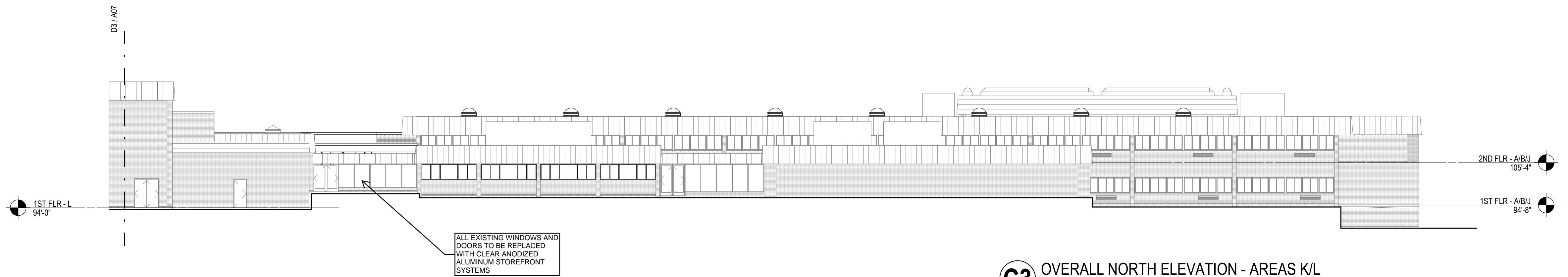
C

B

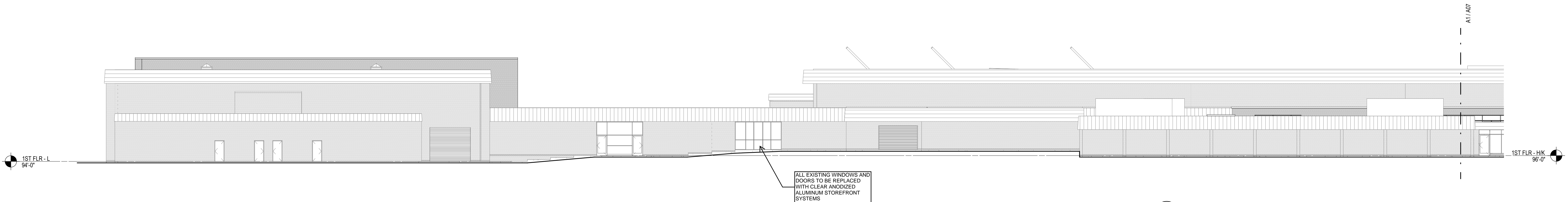
A



D3 OVERALL NORTH ELEVATION - AREA L
1/16" = 1'-0"



C3 OVERALL NORTH ELEVATION - AREAS K/L
1/16" = 1'-0"



B1 OVERALL WEST ELEVATION - AREAS D/K/L
1/16" = 1'-0"



A1 OVERALL WEST ELEVATION - AREAS A/B/H/J
1/16" = 1'-0"



milwaukee 333 East Chicago Street
Milwaukee, Wisconsin 53202
414.271.5350

madison 309 West Johnson Street, Suite 202
Madison, Wisconsin 53703
608.442.5350

denver 1899 Wynkoop Street, Suite 300
Denver, Colorado 80202
303.595.4500

PROJECT INFORMATION

MMSD - LA
FOLLETTE HIGH
SCHOOL - ADDITION
AND RENOVATION

702 PFLAUM ROAD
MADISON, WI 53716

ISSUANCE AND REVISIONS

DATE	DESCRIPTION
05/05/2021	UDC SUBMITTAL

KEY PLAN

SHEET INFORMATION

**PROGRESS DOCUMENTS
NOT FOR CONSTRUCTION**

These documents reflect progress and intent and may be subject to change, including additional detail. These are not final construction documents and shall not be used for final bidding or construction-related purposes.

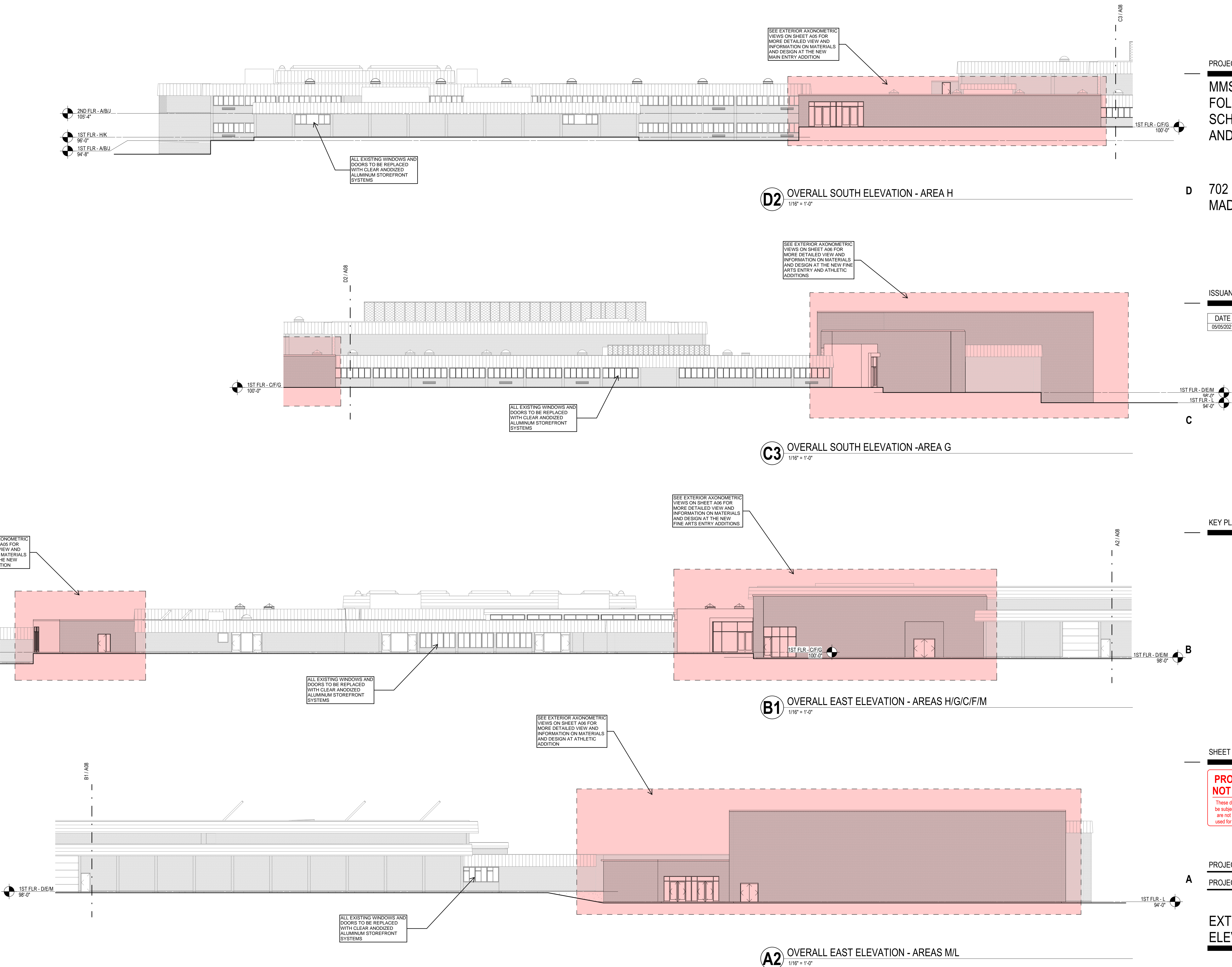
PROJECT MANAGER CO

PROJECT NUMBER 320537-01

EXTERIOR
ELEVATIONS

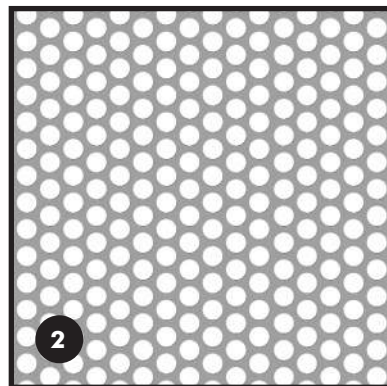
A08

© 2021 Epstein Uhen Architects, Inc.

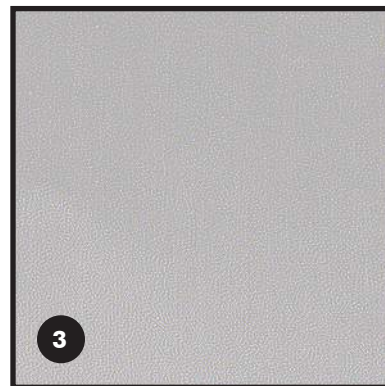




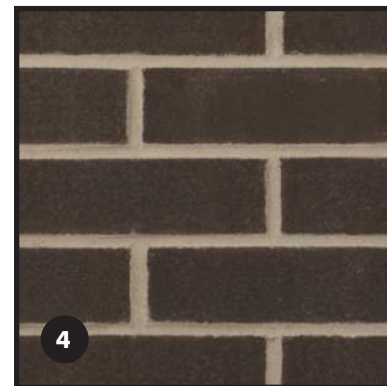
1
PAINTED STEEL



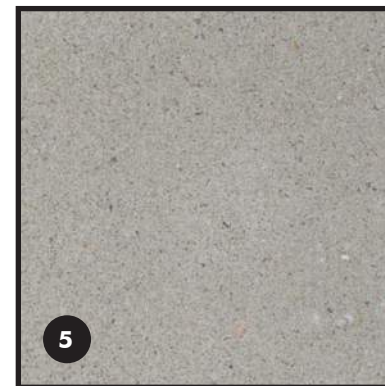
2
PERFORATED METAL PANEL



3
CLEAR ANODIZED
ALUMINUM STOREFRONT
MULLIONS AND METAL
PANEL



4
GLEN-GERY BLACK FOREST
MODULAR BRICK



5
LIMESTONE GREY PRECAST
CONCRETE



6
EXISTING PATINAD COPPER
METAL PANEL



7
EXISTING BRICK

SOUTH FACADE_NEW MAIN ENTRY ON PFLAUM ROAD